

Fisheries

Southern Zone Rock Lobster (*Jasus edwardsii*) Fishery Stock Assessment 2021-22



A. Linnane, R. McGarvey, J. Feenstra and P. Hawthorne

SARDI Publication No. F2007/00276-17
SARDI Research Report Series No. 1175

SARDI Aquatic Sciences
PO Box 120 Henley Beach SA 5022

July 2023

Fishery Assessment Report to PIRSA Fisheries and Aquaculture



Southern Zone Rock Lobster (*Jasus edwardsii*) Fishery Stock Assessment 2021-22

Fishery Assessment Report to PIRSA Fisheries and Aquaculture

A. Linnane, R. McGarvey, J. Feenstra and P. Hawthorne

**SARDI Publication No. F2007/00276-17
SARDI Research Report Series No. 1175**

July 2023

This report may be cited as:

Linnane, A., McGarvey, R., Feenstra, J. and Hawthorne, P. (2023). Southern Zone Rock Lobster (*Jasus edwardsii*) Fishery 2021/22. Fishery Assessment Report to PIRSA Fisheries and Aquaculture. South Australian Research and Development Institute (Aquatic Sciences), Adelaide. SARDI Publication No. F2007/00276. SARDI Research Report Series No. 1175. 68pp.

DISCLAIMER

The authors warrant that they have taken all reasonable care in producing this report. The report has been through the SARDI internal review process and has been formally approved for release by the Research Director, Aquatic Sciences. Although all reasonable efforts have been made to ensure quality, SARDI does not warrant that the information in this report is free from errors or omissions. SARDI and its employees do not warrant or make any representation regarding the use, or results of the use, of the information contained herein as regards to its correctness, accuracy, reliability and currency or otherwise. SARDI and its employees expressly disclaim all liability or responsibility to any person using the information or advice. Use of the information and data contained in this report is at the user's sole risk. If users rely on the information they are responsible for ensuring by independent verification its accuracy, currency or completeness. The SARDI Report Series is an Administrative Report Series which has not been reviewed outside the department and is not considered peer-reviewed literature. Material presented in these Administrative Reports may later be published in formal peer-reviewed scientific literature.

© 2023 SARDI

This work is copyright. Apart from any use as permitted under the *Copyright Act* 1968 (Cth), no part may be reproduced by any process, electronic or otherwise, without the specific written permission of the copyright owner. Neither may information be stored electronically in any form whatsoever without such permission.

Author(s): A. Linnane, R. McGarvey, J. Feenstra and P. Hawthorne

Reviewer(s): Greg Ferguson and Jason Earl (SARDI) Hamish Telfer (PIRSA)

Approved by: Dr S. Mayfield
Science Leader – Fisheries

Signed: 

Date: 20 July 2023

Distribution: PIRSA Fisheries and Aquaculture, Southern Zone Rock Lobster licence holders, Parliamentary Library, State Library and National Library

Circulation: Public Domain

ALL ENQUIRIES

South Australian Research and Development Institute - SARDI Aquatic Sciences
2 Hamra Avenue West Beach SA 5024
PO Box 120 Henley Beach SA 5022
P: (08) 8207 5400 F: (08) 8207 5415 E: pirsa.sardiatics@sa.gov.au
W: <http://www.pir.sa.gov.au/research>

TABLE OF CONTENTS

TABLE OF CONTENTS	iv
LIST OF TABLES	vi
LIST OF FIGURES	vii
ACKNOWLEDGEMENTS.....	viii
EXECUTIVE SUMMARY	1
1 INTRODUCTION	3
1.1 Overview	3
1.2 Description of the fishery	3
1.2.1 Access	3
1.2.2 Management arrangements	3
1.2.3 Recreational fishery.....	4
1.3 Biology of Southern Rock Lobster	6
1.4 Research program	7
1.5 Information sources for assessment.....	7
1.5.1 Commercial catch and effort data	7
1.5.2 Recreational catch and effort data	8
1.5.3 Voluntary catch sampling	8
1.5.4 Puerulus monitoring program	8
1.5.5 Fishery-Independent Monitoring Survey	8
1.5.6 “qR” and “LenMod” stock assessment models.....	9
1.6 Harvest strategy.....	9
1.6.1 Management plan.....	9
1.6.2 Performance indicators	9
1.7 Stock status classification.....	11
2 METHODS.....	12
2.1 Commercial catch and effort statistics	12
2.2 Recreational catch and effort data.....	12
2.3 Voluntary catch sampling	13
2.4 Puerulus monitoring program	13
2.5 Fishery-Independent Monitoring Survey (FIMS).....	13
2.6 “qR” and “LenMod” stock assessment models.....	14
2.6.1 qR model	15
2.6.2 LenMod.....	16
2.7 Quality assurance of data	16
3 RESULTS	18
3.1 Commercial catch and effort statistics	18
3.1.1 Zone	18
3.1.2 Within-season trends.....	20
3.1.3 Spatial trends.....	23
3.1.4 Additional indices	27
3.2 Recreational catch and effort	30
3.3 Voluntary catch sampling	30
3.4 Puerulus monitoring program	32
3.5 Fishery-Independent Monitoring Survey (FIMS).....	34

3.6	“qR” and “LenMod” stock assessment models.....	36
3.6.1	Model fits	36
3.6.2	Model outputs	36
4	DISCUSSION	38
4.1	Information sources used for assessment	38
4.2	Stock Status	38
4.3	Assessment Uncertainties.....	40
4.4	Future Work.....	40
	BIBLIOGRAPHY	41
5	APPENDICES	45
	Appendix 1. SZRLF Catch, Effort and CPUE data	45
	Appendix 2. Computing confidence intervals for the FIMS indices of abundance	47
	Appendix 3. Specifications of the qR model including equations, assumptions and model parameters.....	49
	Appendix 4. Specifications of the length-structured model (LenMod) including equations, assumptions and model parameters.	55
	Appendix 5. Model fits.....	65

LIST OF TABLES

Table 1-1 Major management milestones for the SZRLF.....	5
Table 1-2 Management arrangements for the SZRLF in 2021/22.....	6
Table 1-3 CPUE bands and associated TACCs for the SZRLF harvest control rule.....	10
Table 1-4 Stock status terminology (Pidcocke et al. 2021).	11
Table 1-5 Stock status classification for the SZRLF	12
Table 3-1 Chronology of TACC versus landed catch in the SZRLF. *Includes 43 t carry-over from 2019/20 and 14 t from the 2020/21.	20
Table 5-1 Catch, Effort and CPUE (commercial and fishery independent survey) for the SZRLF from 1970 to 2021 by zone.....	45
Table 5-2 Catch, Effort and CPUE for the SZRLF from 1970 to 2021 by MFA.	46
Table 5-3 Variables of the qR model dynamics and likelihood assessment estimator.....	54
Table 5-4 Catchability estimates from LenMod for the SZRLF.....	58
Table 5-5 Parameters of the length-structured model (LenMod) and their sources for the Southern Zone Rock Lobster Fishery.	63

LIST OF FIGURES

Figure 1-1 Marine Fishing Areas in the Southern and Northern Zones of the South Australian Rock Lobster Fishery.....	4
Figure 1-2 A commercial Southern Rock Lobster fishing pot.....	5
Figure 2-1 Location of Fishery Independent Monitoring Survey (FIMS) transects in the SZRLF. MFA = Marine fishing Area.....	14
Figure 3-1 Fishery dependent outputs for the SZRLF. (a) Catch and effort including total allowable commercial catch (TACC) limit; (b) catch per unit effort (CPUE) including long-term average (dashed line); (c) pre-recruit index (PRI) including trigger reference point (dashed line); and (d) mean weight.....	19
Figure 3-2 Within-season fishery dependent trends in the SZRLF. (a) Catch and effort; (b) catch per unit effort (CPUE); (c) pre-recruit index (PRI); and (d) mean weight.....	22
Figure 3-3 Spatial fishery dependent trends in the SZRLF. (a) Catch and effort; (b) catch per unit effort (CPUE); (c) pre-recruit index (PRI); and (d) mean weight.....	24
Figure 3-4 Percentage of catch taken from four depth ranges in the SZRLF by zone (top) and across the primary MFAs (bottom) from 2003 to 2021.....	26
Figure 3-5 CPUE by depth in the SZRLF from 1970 to 2021.....	27
Figure 3-6 Additional fishery dependent indices in the SZRLF. (a) Catch rate of spawning lobsters; (b) predation mortality; (c) average number of days fished (with S.D.); and (d) levels of high-grading.....	29
Figure 3-7 Length frequency distributions of male and female lobsters combined in the SZRLF from 2011 to 2021 (red line indicates MLS at 98.5 mm CL).....	31
Figure 3-8 Puerulus settlement indices (mean \pm SE) in the SZRLF from 1991 to 2021. Dashed and solid black lines represent long-term (1991-2021) average and median estimates respectively.....	33
Figure 3-9 Correlations between SZRLF puerulus settlement lagged by four years with logbook PRI.....	33
Figure 3-10 Comparison of legal size catch rates (nr/potlift) from commercial logbook data and fishery independent monitoring surveys.....	35
Figure 3-11 Comparison of undersized catch rates (nr/potlift) from commercial logbook data and fishery independent monitoring surveys.....	35
Figure 3-12 Fishery model outputs for the SZRLF. (a) Legal-size biomass; (b) Egg production; (c) % of unfished egg production; (d) Exploitation rate; and (e) Recruitment.....	37
Figure 5-1 Fit of the qR model to catch in number of lobsters landed for the SZRLF, based on annual logbook catch totals from the fishery.....	65
Figure 5-2 Fit of the qR model to catch in weight for the SZRLF, based on annual logbooks catch totals from the fishery.....	65
Figure 5-3 Fit of the LenMod model to monthly catch in number (Cn) for the SZRLF, based on logbook catch totals from the fishery. (Note: October closed to fishing in 2010).....	66
Figure 5-4 Fit of the LenMod model to monthly catch per unit effort (CPUE) for the SZRLF, based on logbook catch totals from the fishery (Note: October closed to fishing in 2010).....	66
Figure 5-5 Fits of LenMod model (black line) proportions by length bin to commercial length frequency data for both males and females taken during the 2021 season in the SZRLF.....	67

ACKNOWLEDGEMENTS

Research presented in this report was commissioned by PIRSA Fisheries and Aquaculture using funds obtained from licence fees paid by participants in the Southern Zone Rock Lobster Fishery. SARDI Aquatic and Livestock Sciences provided substantial in-kind support for the project. We thank Lachlan McLeay, Kylie Howard and Andrew Hogg for collecting and collating the data. The report was formally reviewed by Dr Jason Earl, Dr Greg Ferguson (SARDI) and Hamish Telfer (PIRSA Fisheries and Aquaculture) and approved for release by Dr Stephen Mayfield (Science Leader, Fisheries, SARDI Aquatic and Livestock Sciences).

EXECUTIVE SUMMARY

This stock assessment determined the status of South Australia's Southern Zone Rock Lobster Fishery (SZRLF) and provides the latest estimates of the biological performance indicators (PIs) in context of the reference points (RPs) and stock status classification described in the Management Plan for the fishery (PIRSA 2020). Stock status was determined using the harvest strategy for the fishery that was developed in alignment with the National Fishery Status Reporting Framework (NFSRF) classification system that is used to determine the status of all South Australian fish stocks (Piddocke et al. 2021).

Assessment of the SZRLF relies heavily on data from the commercial fishing sector through mandatory catch and effort logbook reporting. Catch per unit effort (CPUE) of legal and undersized (pre-recruit) lobsters are the main indicators of legal and pre-recruit abundance, respectively. Fishery-independent surveys and fishery model outputs also contribute to the assessment.

Overseas market disruptions have been prevalent across the Southern Rock Lobster industry in South Australia over the last three seasons. To allow for greater fishing flexibility, the 2021 season was extended from 15 September to 30 June (normally 1 October to 31 May). In 2021, the Total Allowable Commercial Catch (TACC) in the SZRLF was 1,334 t. This reflected a regular TACC of 1,320 t plus 14 t of carry-over from the 2020 season. The total reported 2021 logbook catch was 1,327.1 t (99% of TACC). Effort required to take the 1,327.1 t catch was 767,379 potlifts, the second lowest on record.

Nominal legal-sized CPUE in 2021 was 1.72 kg/potlift, reflecting a 79% increase over the last five seasons and the highest catch rate since 2004. This catch rate is above both the long-term average and the trigger reference point (TrRP) for the fishery. Recent increases in CPUE are also reflected in fishery-independent surveys.

In 2021, the pre-recruit index (PRI) was 1.54 undersized/potlift, reflecting a 13% decrease over the last two seasons, but remaining above the TrRP of 1.32 undersized/potlift. In the SZRLF, the time taken for pre-recruits to enter the fishable biomass is estimated to be approximately one year.

Model outputs indicate considerable increases in legal-size biomass over the last six seasons. In 2021, the estimate was 4,700 t, the highest since 2004. This equates to an exploitation rate of 29%, the lowest on record for the fishery. Egg production in the fishery remains low with 2021 estimates equating to 14% of unfished levels, but with increases in recent seasons.

In 2021, the CPUE of 1.72 kg/potlift was above the TrRP of 0.60 kg/potlift. As a result, the SZRLF stock is classified as “**sustainable**”. This means that the current fishing mortality is being adequately controlled to avoid the stock becoming recruitment impaired.

Table 1 Key statistics for the SZRLF. Note that model outputs reflect an average of qR and LenMod estimates.

Statistic	2021/22	2020/21
TACC	1,334 t	1,289 t
Total commercial catch	1,327.1 t	1,275.5 t
Total effort	767,379 potlifts	775,014 potlifts
Commercial CPUE	1.72 kg/potlift	1.64 kg/potlift
Pre-recruit index	1.54 undersized/potlift	1.58 undersized/potlift
Biomass estimate	4,700 t	4,377 t
Exploitation rate	29%	30%
Egg Production	14%	12%
Status	Sustainable	Sustainable

Keywords: Southern Rock Lobster, *Jasus edwardsii*, stock assessment, harvest strategy, total allowable commercial catch.

1 INTRODUCTION

1.1 Overview

Stock assessments for the South Australian Southern Zone Rock Lobster (*Jasus edwardsii*) Fishery (SZRLF) have been produced annually since 1997 (Prescott et al. 1998). The current report presents information on the fishery and biology of the species and provides a current assessment of the status of the SZRLF in relation to the performance indicators provided in the Management Plan for the fishery (PIRSA 2020).

1.2 Description of the fishery

1.2.1 Access

Southern Rock Lobster is a highly valued fishery species across the States of South Australia, Victoria and Tasmania. Within South Australia, the fishery is divided into two zones: Northern and Southern, with an approximate SZRLF value of \$71.3 million in 2020/21 (BDO Econsearch 2022). The SZRLF includes all South Australian waters between the mouth of the River Murray and the Victorian border and covers an area of 22,000 km² (Figure 1-1). It is divided into seven Marine Fishing Areas (MFAs), but the majority of fishing occurs in four MFAs (51, 55, 56 and 58). There are 180 commercial licences with lobsters caught using steel-framed pots (Figure 1-2) that are set overnight and hauled at first light.

1.2.2 Management arrangements

The SZRLF is managed by the South Australian State Government's Primary Industries and Regions South Australia (PIRSA), Fisheries and Aquaculture Division, in accordance with the legislative framework provided within the *Fisheries Management (General) Regulations 2017* while specific regulations are established in the *Fisheries Management (Rock Lobster Fisheries) Regulations 2017*. The policy, objectives and strategies to be employed for the sustainable management of the SZRLF are described in the *Management Plan for the South Australian Commercial Southern Zone Rock Lobster Fishery* (PIRSA 2020). Recreational fishers are regulated under the *Fisheries Management (General) Regulations 2017*.

The commercial SZRLF has undergone considerable management changes over the past 50 years that have seen the fishery restructured and limited through gear restrictions, spatial and temporal closures, size limits and the implementation of a total allowable commercial catch (TACC) in 1993 (Table 1-1). The TACC is set annually and divided proportionally between licence holders owning individual transferable quota (ITQ) units. The daily catch of individual

vessels is monitored electronically via catch and disposal records and mandatory commercial logbooks. The normal fishing season extends from 1 October to 31 May of the following year. However, in both 2020/21 and 2021/22, trial season extensions were introduced to allow for greater fishing flexibility in response to overseas market issues. In 2020/21, the SZRLF was opened on 15 September 2020 and extended to 31 July 2021, while in 2021/22 it opened on 15 September 2021 and closed on 30 June 2022. Full details of management arrangements for the 2021/22 season are provided in Table 1-2.

1.2.3 Recreational fishery

There is an important recreational fishery for lobsters in the SZRLF. Recreational fishers are permitted to use drop nets, pots or SCUBA to take lobsters during the same season as commercial fishers. All recreational lobster pots must be registered. The recreational season extends from 1 October to 31 May.

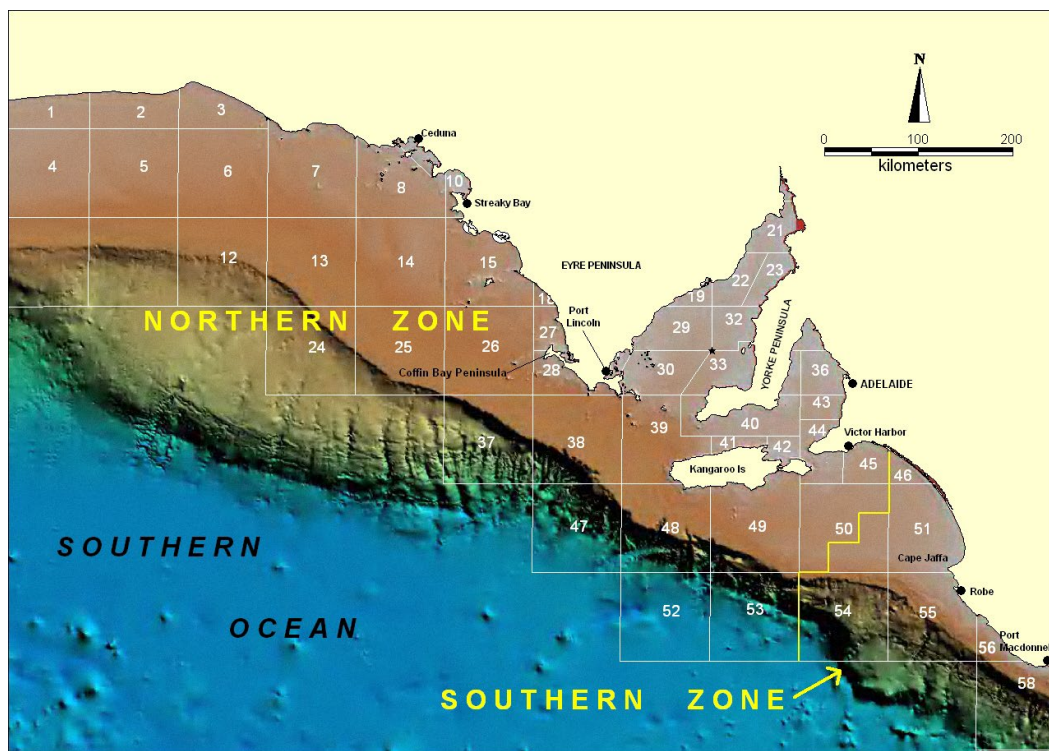


Figure 1-1 Marine Fishing Areas in the Southern and Northern Zones of the South Australian Rock Lobster Fishery.



Figure 1-2 A commercial Southern Rock Lobster fishing pot.

Table 1-1 Major management milestones for the SZRLF.

Year	Management milestone
1958	Closed season for females from 1 June to 31 October and for males from 1 to 31 October
1967	Pot and boat limit introduced, no new boats to operate in the then "South-Eastern Zone"
1968	Limited entry declared, compulsory commercial catch log
1978	June, July, October closed
1980	Winter closure declared. Season from 1 October to 30 April.
1984	15% pot reduction
1987	Buyback of 40 licences (2,455 pots)
1993	April closed; TACC implemented for 1993/94 season at 1,720 t
1997	Management Plan for the fishery published (Zacharin 1997)
2001	TACC increased by 50 t to 1,770 t
2003	TACC increased by 130 t to 1,900; May opened on trial basis
2005	May trial completed. Decision to open May permanently
2007	Management Plan for the SZ fishery published (Sloan and Crosthwaite 2007)
2008	TACC reduced to 1,770 t
2009	TACC reduced to 1,400 t
2010	TACC reduced to 1,250 t. October closed to fishing
2011	New Harvest Strategy developed. October reopened
2013	Management Plan for the SZ fishery published (PIRSA 2013). One licence surrendered from fishery through marine parks voluntary commercial fisheries catch and effort reduction program
2014	TACC reduced to 1,246 t to account for voluntary surrender of one licence
2020	Management Plan for the SZ fishery published (PIRSA 2020)
2020	Season opened on 15 September and extended to 31 July on trial basis
2021	Season opened on 15 September and extended to 30 June on trial basis
2021	TACC increased to 1,320 t

Table 1-2 Management arrangements for the SZRLF in 2021/22.

Management tool	Current restriction
Limited entry	180 licences
Total Allowable Commercial Catch	1,334 t (1,320 t + 14 t carry-over)
Closed season	1 July to 14 September (temporary)
Total number of pots	11,882
Minimum size limit	98.5 mm CL
Maximum number of pots/licence	100 pots
Minimum number of pots/licence	40 pots
Maximum quota unit holding	Limited by pot holding (100 pots)
Minimum quota unit holding	Limited by minimum pot holding (40 pots)
Spawning females	No retention
Maximum vessel length	None
Maximum vessel power	None
Closed areas	Margaret Brock Reef, Cape Jaffa and Rivoli Bay
Escape gaps	Two escape gaps or 50 mm mesh size
Catch and effort data	Daily logbook reported electronically
Catch and Disposal Records	Daily records reported electronically
Landing locations	7 designated landing sites
Landing times	Landings permitted during core hours or outside core hours with a prior to landing report
Prior to landing reports to PIRSA	Outside core hours, 1 hour before landing
Bin tags	All bins must be sealed with a lid and an approved tag prior to lobster being unloaded from the vessel. Tags are sequentially numbered.

1.3 Biology of Southern Rock Lobster

Southern Rock Lobster are distributed around southern mainland Australia, Tasmania and New Zealand. In Australia, the northern limits of distribution are Geraldton in Western Australia and Coffs Harbour in northern New South Wales but the bulk of the population is found in South Australia, Victoria, and Tasmania where they occur on algal-dominated reef habitat to depths of approximately 200 m.

Detailed reviews on the reproductive biology and life history of *J. edwardsii* are provided in Phillips (2013). In brief, *J. edwardsii* mate from April to July followed by a brooding period of 3–4 months over the Austral winter (June to August) (MacDiarmid 1989). Larvae hatch in early spring and pass through a brief (10-14 days) nauplius period before entering into a planktonic, leaf-like phase called a phyllosoma. These develop through a series of 11 stages over 12–23 months before metamorphosing into the puerulus stage (Booth et al. 1991; Bruce et al. 1999). Puerulus actively swim thereby aiding settlement onto suitable reef habitat (Booth et al. 1991; Phillips and McWilliam 2009).

In South Australia, the strength of westerly winds during late winter and early spring, plays an important role in inter-annual settlement variation (McGarvey and Matthews 2001; Linnane et

al. 2010). After inshore settlement, early juveniles (<20 mm carapace length, CL) are solitary and normally found in isolated holes and crevices. As they develop, juvenile lobsters become increasingly communal with larger juveniles and sub-adults residing in large aggregations inside rocky dens within structurally complex reef habitat.

Based on morphological and mitochondrial DNA analysis, historical research provided little evidence of population sub-structuring across mainland Australia, Tasmania and New Zealand (Smith et al. 1980; Brasher et al. 1992; Ovenden et al. 1992). The long larval phase and widespread occurrence of larvae across the central and south Tasman Sea, in conjunction with known current flows, pointed to the likely transport of phyllosoma from south-eastern Australia to New Zealand, providing genetic mixing between the two populations (Booth et al. 1990; Bruce et al. 2007). More recent and powerful genetic techniques however have rejected the concept of panmixia and revealed significant population structure in both Tasmanian (Morgan et al. 2013) and New Zealand (Thomas 2012) stocks.

1.4 Research program

SARDI Aquatic and Livestock Sciences maintains an on-going stock assessment and monitoring program for both the Northern and Southern Zone rock lobster fisheries of South Australia. Outputs from the program are provided to the Department for Primary Industries and Regions South Australia (PIRSA) Fisheries and Aquaculture, through a series of annual status and stock assessment reports. Dedicated research projects are also undertaken periodically to address to key knowledge gaps or improve ongoing stock assessments (McGarvey et al. 2014; Linnane et al. 2016).

1.5 Information sources for assessment

1.5.1 Commercial catch and effort data

All licenced commercial fishers are required to complete a daily logbook of fishing activity. This includes information such as MFA fished, species targeted, species caught, weight of legal-sized catch, number of legal-sized lobsters landed and fishing effort as potlifts. In addition to mandatory details, a number of voluntary fields may also be completed such as number of undersized individuals, lobster mortalities and levels of high-grading (total weight of lobsters returned to the water due to low market value). Records are submitted monthly to PIRSA Fisheries and Aquaculture where they are entered into the South Australian Rock Lobster (SARL) database. The catch and effort time series used in this assessment extends from 1 October 1970 to 30 June 2022.

1.5.2 Recreational catch and effort data

Five recreational fishing surveys have been carried out in South Australia over the past 20 years. These were primarily telephone/diary surveys in nature and were undertaken in 2000/01 (Henry and Lyle 2003), 2004/05 (Currie et al. 2006), 2007/08 (Jones 2009), 2013/14 (Giri and Hall 2015) and 2021/22 (Beckmann et al. 2023).

1.5.3 Voluntary catch sampling

Since 1991, commercial fishers and researchers have collaborated in a voluntary catch sampling program. Fishers contribute by recording data from up to three pots per day while researchers generally record data from all pots during on-board observer trips. The program collects catch and effort data at finer spatial scales to that recorded in commercial logbooks in addition to supplementary data such as sex ratios, reproductive condition of females and bycatch. An important contribution from the program is lobster size data which are used to generate size frequency distributions as well as provide input data for the length-based LenMod fishery model.

1.5.4 Puerulus monitoring program

Rates of puerulus and post-puerulus settlement have been monitored in the SZRLF since 1991/92. This program was initiated based on the settlement-recruitment relationship observed in Western Australia where future commercial catches of *Panulirus cygnus* were predicted from settlement indices using a 3–4 year time lag (Caputi et al. 1995). Though not as explicit, similar relationships are now also evident in specific regions of some *J. edwardsii* fisheries in both Australia and New Zealand (Gardner et al. 2001; Booth and McKenzie 2009; Linnane et al. 2013; 2014).

1.5.5 Fishery-Independent Monitoring Survey

It has long been recognised that fishery-dependent abundance estimates can be influenced by a range of factors associated with fishing behaviour (Thorson et al. 2017). As a result, a fishery-independent monitoring survey (FIMS) has been undertaken in the SZRLF since 2006/07. The primary aim of the FIMS is to determine legal and undersized lobster abundances, as well as size frequency distributions, that are independent of commercial fishing behaviour.

1.5.6 “qR” and “LenMod” stock assessment models

Two computer-based fishery stock assessment models have been developed for the South Australian Rock Lobster Fishery, referred to as “qR” and “LenMod” models. Each model provides outputs for both the Northern and Southern Zone fisheries that take into account known biological information specific to each region.

The primary data input to the qR model is catch by weight and catch by number. Outputs have been presented in stock assessment reports for the fishery since 1997 (McGarvey et al. 1997; McGarvey and Matthews 2001) with a review in 2002 (Breen and McKoy 2002) concluding that the qR model was an appropriate tool for assessing rock lobster stocks. The model has been refined over time, most notably during the peer review process for publication of McGarvey and Matthews (2001) and changes to biomass definitions in 2008.

The basic structure of the second model, LenMod, was developed in the 1990s (Punt and Kennedy 1997). Variants of this length-based lobster model are now used for management and quota setting in most *J. edwardsii* fisheries, notably in New Zealand, Victoria and Tasmania. LenMod fits to monthly catch by number and CPUE, while conditioning on catch by weight. In addition, it also incorporates length-frequency data from voluntary catch sampling, where the lobster population is broken down into size categories of differing CL.

The primary outputs from both models are: (i) legal-sized biomass; (ii) egg production; (iii) % unfished egg production; (iv) exploitation rate (fraction of legal-sized biomass harvested); and (v) recruitment. In addition, both models have been extensively used in bio-economic analyses and harvest strategy evaluations (McGarvey et al. 2014; 2015; 2016; 2017).

1.6 Harvest strategy

1.6.1 Management plan

A new Management Plan for the SZRLF was adopted in July 2020 (PIRSA 2020). The harvest strategy in this management plan provides a structured framework for decision-making that aims to ensure that the ecologically sustainable development objectives of the *Fisheries Management Act 2007* are achieved. The aim of this harvest strategy is to improve the stock towards levels that give long-term optimum utilisation and to avoid stock over-exploitation.

1.6.2 Performance indicators

The Harvest Control Rule (HCR) uses multiple performance indicators to monitor the performance of the fishery (PIRSA 2020). Details of the HCR and its associated testing are

provided in McGarvey et al. (2016). Broadly, the HCR aims to target a constant exploitation rate based on historical fishery performance and uses two fishery-dependent indicators.

The primary indicator is commercial CPUE (kg of legal-sized lobster/potlift) based on data from October to May, inclusive. The secondary indicator is a commercial logbook pre-recruit index (PRI; number of undersized lobsters/potlift) based on data from October to March, inclusive. Additional indicators not explicitly used to set a TACC, but which contribute to the overall assessment, include the puerulus settlement index (PSI), fishery independent monitoring survey (FIMS) outputs, length-frequency data and model outputs such as % unfished egg production (%UEP), exploitable biomass, exploitation rates and model-estimated recruitment.

CPUE bands, which equate to target exploitation rates, are specified in Table 1-3. To set a TACC for the upcoming season, the CPUE from the previous season is applied. A Trigger Reference Point (TrRP) of 0.60 kg/potlift is used, below which, exploitation rates (and corresponding TACCs) are reduced, while a Limit Reference Point (LRP) of 0.40 kg/potlift reflects the point at which the fishery is closed. TACCs can only be increased if the PRI is above a TrRP of 1.32 undersized/potlift. TrRPs and LRP are not applied to additional indicators.

Table 1-3 CPUE bands and associated TACCs for the SZRLF harvest control rule.

CPUE (kg/potlift)	TACC (t)
<0.40	0
0.40-0.44	337
0.45-0.49	480
0.50-0.54	639
0.55-0.59	812
0.60-0.69	897
0.70-0.79	947
0.80-1.59	1246
1.60-1.99	1320
2.00-2.39	1400
2.4+	1495

1.7 Stock status classification

The status of the SZRLF was classified using the National Fishery Status Reporting Framework (NFSRF) (Flood et al. 2014) the terminology of which was recently refined and amended (Pidcocke et al. 2021) (Table 1-4). It considers whether the current level of fishing pressure is adequately controlled to ensure that the stock abundance is not reduced to a point where the production of juveniles is significantly compromised. The system combines information on both the current stock size and the level of exploitation into a single classification for each stock against defined biological reference points. Each stock is then classified as 'sustainable', 'depleting', 'recovering', 'depleted', 'undefined' or 'negligible'. PIRSA has adopted this classification system to determine the status of all key South Australian fish stocks.

The CPUE performance indicator in the current harvest strategy for the SZRLF is directly linked to a definition of stock status (Table 1-5).

Table 1-4 Stock status terminology (Pidcocke et al. 2021).

	Stock status	Description	Potential implications for management of the stock
	Sustainable	Biomass (or proxy) is at a level sufficient to ensure that, on average, future levels of recruitment are adequate (recruitment is not impaired) and for which fishing mortality (or proxy) is adequately controlled to avoid the stock becoming recruitment impaired (overfishing is not occurring).	Appropriate management is in place.
	Depleting	Biomass (or proxy) is not yet depleted and recruitment is not yet impaired, but fishing mortality (or proxy) is too high (overfishing is occurring) and moving the stock in the direction of becoming recruitment impaired.	Management is needed to reduce fishing mortality and ensure that the biomass does not become depleted.
	Recovering	Biomass (or proxy) is depleted and recruitment is impaired, but management measures are in place to promote stock recovery, and recovery is occurring.	Appropriate management is in place, and there is evidence that the biomass is recovering.
	Depleted	Biomass (or proxy) has been reduced through catch and/or non-fishing effects, such that recruitment is impaired. Current management is not adequate to recover the stock, or adequate management measures have been put in place but have not yet resulted in measurable improvements.	Management is needed to recover this stock; if adequate management measures are already in place, more time may be required for them to take effect.
	Undefined	Not enough information exists to determine stock status.	Data required to assess stock status are needed.
	Negligible	Catches are so low as to be considered negligible and inadequate information exists to determine stock status.	Assessment will not be conducted unless catches and information increase.

Table 1-5 Stock status classification for the SZRLF.

CPUE (kg/potlift)	Status
≥ 0.60	Sustainable
< 0.60	Depleting or Recovering
≤ 0.40	Depleted

2 METHODS

2.1 Commercial catch and effort statistics

Commercial logbook catch and effort data are compulsorily recorded by licenced fishers in the SZRLF. Detailed analyses of these data are provided for the period between 1 January 1970 and 30 June 2022. For ease of reference, figures and text refer to the starting year of each season (e.g. “2021” refers to the 2021/22 fishing season starting 15 September 2021).

Important commercial data such as catch (t), effort (potlifts), CPUE (kg/potlift), mean weight (kg) and PRI (number of undersized/potlift) were analysed both spatially and temporally. Spatially, data are presented by zone, MFA and in some cases, depth range. Temporally, data are presented by year and month.

In addition to the above, additional data sources recorded in the voluntary component of the logbook are also presented but at a reduced spatial or temporal scale. While these are not directly linked to setting the annual TACC, they are either deemed to contribute to the overall understanding of the fishery or have been specifically requested by stakeholder groups. These include catch rates of: (i) ovigerous (spawning) females and predation mortality as estimated through catch rates of: (ii) dead lobsters; and (iii) octopus, which are responsible for the depredation of lobsters caught in pots. The average numbers of days fished per licence holder (as a proxy for fishing effort) and estimated levels of fishery high-grading are also analysed.

2.2 Recreational catch and effort data

The specific details of the methodology used in the five recreational surveys considered in this assessment can be found in their respective reports (2000/01: Henry and Lyle 2003; 2004/05: Currie et al. 2006; 2007/08: Jones 2009; 2013/14: Giri and Hall 2015; Beckmann et al. 2023). A detailed description of the telephone-diary design philosophy and method is provided in Henry and Lyle (2003).

2.3 Voluntary catch sampling

Voluntary catch sampling datasheets are completed daily and submitted monthly to PIRSA Fisheries and Aquaculture. Fishers and observers count, measure (mm CL), and determine the sex of lobsters from all pots sampled and, for females, record the reproductive condition. In addition, all bycatch are identified and counted. The latitude and longitude of each pot sampled is recorded, thereby providing information at a finer spatial resolution than that of commercial logbooks.

2.4 Puerulus monitoring program

Puerulus monitoring sites in the SZRLF are located at Blackfellows Caves, Livingstones Bay, Beachport and Cape Jaffa, with the collectors set in groups of 10 or 12 at each site. The collectors are similar in design to those described by Booth and Tarring (1986) and consist of angled wooden slats that mimic natural crevice habitat. The design has remained unchanged throughout the sampling period. Sampling is undertaken monthly, whereby collector heads are detached from a base by a diver, covered with a mesh bag and hauled to the surface for counting of pueruli.

The annual puerulus settlement index (PSI) is calculated as the mean monthly settlement on all collectors combined. This index is then related to annual pre-recruit and commercial catch rate indices based on previously estimated time lags.

2.5 Fishery-Independent Monitoring Survey (FIMS)

The FIMS design consists of 29 transect lines, running from inshore (~10 m depth) to offshore (~120 m depth) fishing grounds in the SZRLF (Figure 2-1). Each transect consists of 10 pots set at predetermined locations that are independent of known fishing effort. Sampling is undertaken in September and January of each season. Lobsters are counted, sexed, measured, staged (females only) and tagged. Data are used to generate legal (number, nr/potlift) and undersized (nr/potlift) CPUE indices which are compared to those from fishery-dependent logbook sources. FIMS abundance indices were calculated based on systematic confidence interval estimates for clustered populations (McGarvey et al. 2016 and Appendix 2).

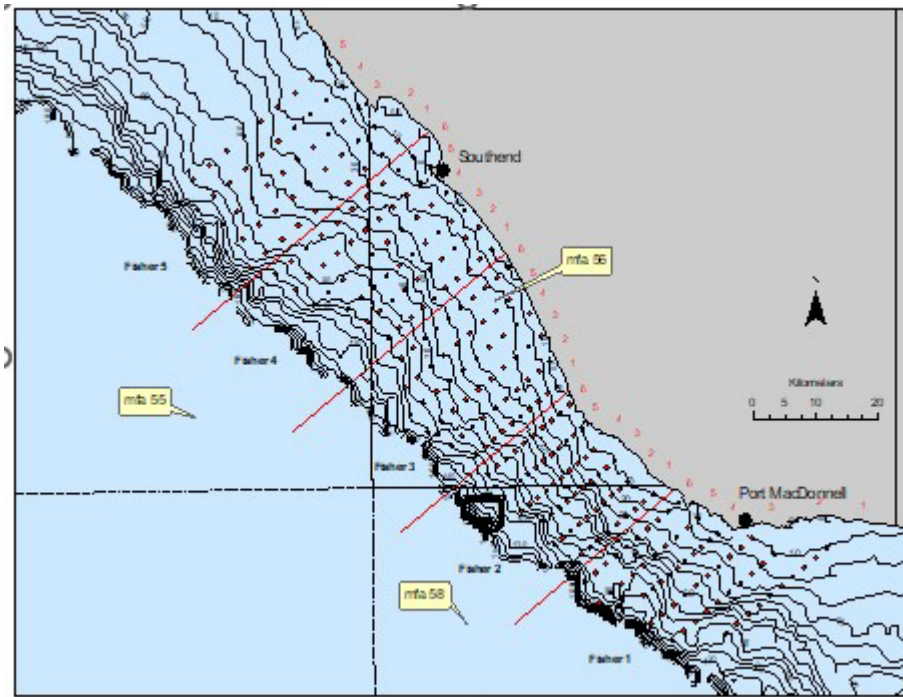


Figure 2-1 Location of Fishery Independent Monitoring Survey (FIMS) transects in the SZRLF. MFA = Marine fishing Area.

2.6 “qR” and “LenMod” stock assessment models

Two models are used to assess the SZRLF. The qR model is yearly and uses the three logbook time series of catch by weight, catch by number, and fishing effort as potlifts. LenMod is monthly and integrates catch-sampling length-frequencies and FIMS CPUE, in addition to the logbook data used by the qR model. Growth in the two models differs; the qR model uses a vector of mean lengths-at-age while LenMod uses length-transition matrices. Both models estimate yearly independent recruitment. LenMod is conditioned on monthly catch-in-weight totals, while the qR model is conditioned on yearly (scaled) effort.

A number of changes were introduced to the two models in recent years. In both models, the method of computing unfished egg production (UEP) was modified by adopting 1990–2011 as the reference period for computing mean unfished recruitment. This reference period is also used in other jurisdictions (e.g. Tasmania) and therefore permits State-wide consistent reporting at the stock level under the Status of Australian Fish Stocks (SAFS) system. This reference period covers years of both higher-than-average (pre-2002) and lower-than-average (2002+) historical recruitment.

In order to remove any potential bias due to COVID-19 market impacts on fishing practices in the 2019/20 season, for the qR model, the catch rate index of abundance used is that based on reported catch and effort up to January 2020 only. Similarly, for LenMod when fitting to

catch rate and catch in number data, it does so only for October through January in 2019, from October through May (excluding November) in 2020 and from October through to May in 2021.

2.6.1 qR model

The qR model (McGarvey and Matthews 2001) fits to: (i) annual catch in weight and (ii) annual catch in number of lobsters landed. The model is effort conditioned and runs on a yearly time step. It incorporates a Baranov survival model and conditions on effort by assuming that yearly instantaneous fishing mortality rate varies in proportion to yearly reported fishing effort. The likelihood that is maximised numerically to estimate parameters is the sum of the likelihood terms for fitting to catch in weight and number. These normally distributed data provide a shared estimated parameter for the residual error as a likelihood coefficient of variation. Yearly recruitment is estimated for the start of each fishing season. Annual stock biomass is reported as an integrated average over the 12 months of each model year.

Both stock assessment models rely on commercial catch rate as a measure of relative fishable biomass. The addition of landed catches in number to the fitted logbook dataset, unavailable in most fisheries, provides important yearly information about the size of lobsters in the legal catch. Information on mean size in crustacean fisheries is normally available only from length-frequency samples, which can show high sample variation and are subject to additional variation in the specific locations or times during the season when length samples are taken. Catch in weight divided by catch in number gives the yearly mean weight of a landed lobster. Because reported catches in weight and number constitute a 100% sample, the quality of information obtained regarding changes in mean size from catch-log data is far more precise than that obtained from length frequencies, which typically constitute a 0.1% to 1% sample. Thus, the data informing the qR model provide relative indices of abundance as yearly catch rates (in both weight and number) and yearly mean landed weight. McGarvey et. al. (2005) demonstrated, using independent individual-based simulated data, that adding catch in number dramatically improves the accuracy and precision of stock assessment estimates in species that cannot be aged. Further details of the qR model specifications including its equations, assumptions and parameters are provided in Appendix 3.

For 2019/20, the method used to exclude qR catch rate data after January 2020 differed from that of LenMod, because the qR model is yearly. The qR model now also accounts for recreational catch. Details of these specific model updates are given in Appendix 3.

2.6.2 LenMod

LenMod is a length-based assessment model running on a monthly time step. Lobster population numbers are broken down and estimated in 4-mm carapace length bins. Catchability is estimated separately for each month. LenMod infers stock dynamics and abundance levels using maximum likelihood by fitting to four data sources, and conditioning on a fifth: (i) nominal monthly CPUE (in weight) to which fishable biomass is assumed to vary in direct proportion; (ii) monthly catch in number; (iii) frequency proportions by length sex bin fitted by a multinomial likelihood; (iv) fishery-independent monitoring survey (FIMS) CPUE; and (v) catch in weight landed from all sources (commercial and recreational). Dead lobsters in pots (predation), and lobsters dying naturally (average ~9% per month) are directly removed from the model population in each time step. Data sources (ii) and (iii) provide LenMod with information on the size of lobsters in the catch which, interpreted in combination with length-transition matrices, yield estimates of total mortality.

Moulting growth occurring in semi-yearly moulting times is modelled, for each sex, by length-transition matrices that specify the proportion of lobsters in each length class that grow into larger length classes, or remain in that length class, during each summer and autumn moulting season. These length-transition probabilities were estimated using extensive tag-recovery data mainly from the 1990s. The length-transition estimation method of McGarvey and Feenstra (2001) was applied, which infers widely flexible growth curves to be inferred by modelling the parameters predicting mean and variance of observed tag-recovery growth increments as polynomial functions of starting CL.

Growth matrices were estimated for each combination of sex and moulting season. As growth rates of female lobsters are known to slow substantially once they reach maturity, this flexible polynomial estimation method, which accommodates non-linear growth rate versus starting length, provides a more accurate estimation of female adult growth than a traditional von Bertalanffy model of mean growth increment.

Since 2018/19, the method of estimating monthly and sex-specific selectivity has been improved to allow separate length selectivity by grouped months through each season. Full details of LenMod specifications including its equations, assumptions and parameters are provided in Appendix 4.

2.7 Quality assurance of data

All logbook, catch sampling and fishery-independent survey data were entered and validated according to the quality assurance protocols identified for the SZRLF in the SARDI Information Systems quality assurance and data integrity report (Vainickis 2010). The data were stored in

an Oracle database, backed up daily, with access restricted to PIRSA Information Systems staff. Extracts from the database were provided to SARDI rock lobster researchers on request. All puerulus data were entered into Excel spreadsheets and stored on a SARDI network drive.

3 RESULTS

3.1 Commercial catch and effort statistics

In recent seasons, the SZRLF has experienced overseas market disruptions which has subsequently impacted on commercial catch and effort statistics. This was particularly evident in the exceptionally low catches of February 2020 and November 2021 but should be taken into consideration when interpreting fishery trends across the last three seasons.

3.1.1 Zone

In 2021, the TACC in the SZRLF was 1,334 t. This reflected a regular TACC of 1,320 t plus 14 t of carry-over from the 2020 season. The total reported logbook catch (September-June) was 1,327.1 t (99% of TACC) (Figure 3-1a; Table 5-1). Current catch levels are low in a historical context and reflect declines in catch and subsequent TACC reductions from 2007 to 2009 (Table 3-1). During this timeframe, the TACC was reduced by 34% from 1,900 t to 1,250 t with a further reduction to 1,245.7 t in 2014 due to the removal of one licence as part of the marine parks voluntary commercial fisheries catch and effort reduction program. Catches have been stable since 2014, reflecting the constant TACC over this period.

Effort required to take the 1,327.1 t catch was 767,379 potlifts, a decrease of 1% from 2020 (775,014 potlifts) (Figure 3-1a; Table 5-1). Since 2009 (2,049,961 potlifts), effort has generally declined in the fishery, with the 2021 estimate being the second lowest on record.

In 2021, the nominal legal-sized CPUE (October-May) was 1.72 kg/potlift, reflecting a 79% increase over the last five seasons (from 0.96 kg/potlift in 2016) and the highest catch rate since 2004 (Figure 3-1b; Table 5-1). Between 2010 and 2016, catch rates remained relatively stable at approximately 1 kg/potlift. The 2021 estimate represents the fifth time since 2007 that CPUE has been above the long-term average (1.07 kg/potlift). CPUE in 2021 also remained above the trigger reference point (TrRP) of 0.60 kg/potlift.

Overall, the zonal estimate of the logbook-based PRI (October-March) shows a long-term decline between 1999 and 2015 (Figure 3-1c). However, between 2015 and 2019 the PRI increased by 129% to 1.76 undersized/potlift, the highest since 2002. Over the last two seasons, since 2019, the PRI has decreased by 13% and in 2021 was 1.54 undersized/potlift. but remained above the TrRP of 1.32 undersized/potlift. In the SZRLF, the time taken for pre-recruits to enter the fishable biomass is estimated to be approximately one year.

Legal-sized mean weight has remained relatively stable over time ranging between 0.7 and 0.9 kg (Figure 3-1d). From 2018 to 2020, the mean weight increased to 0.96 kg, the highest on record, before decreasing to 0.91 in 2021. Variations in mean weight generally reflect long-term patterns of recruitment, with low mean weights resulting from influxes of small lobsters into the fishable biomass and high mean weights representing several consecutive years of reduced recruitment.

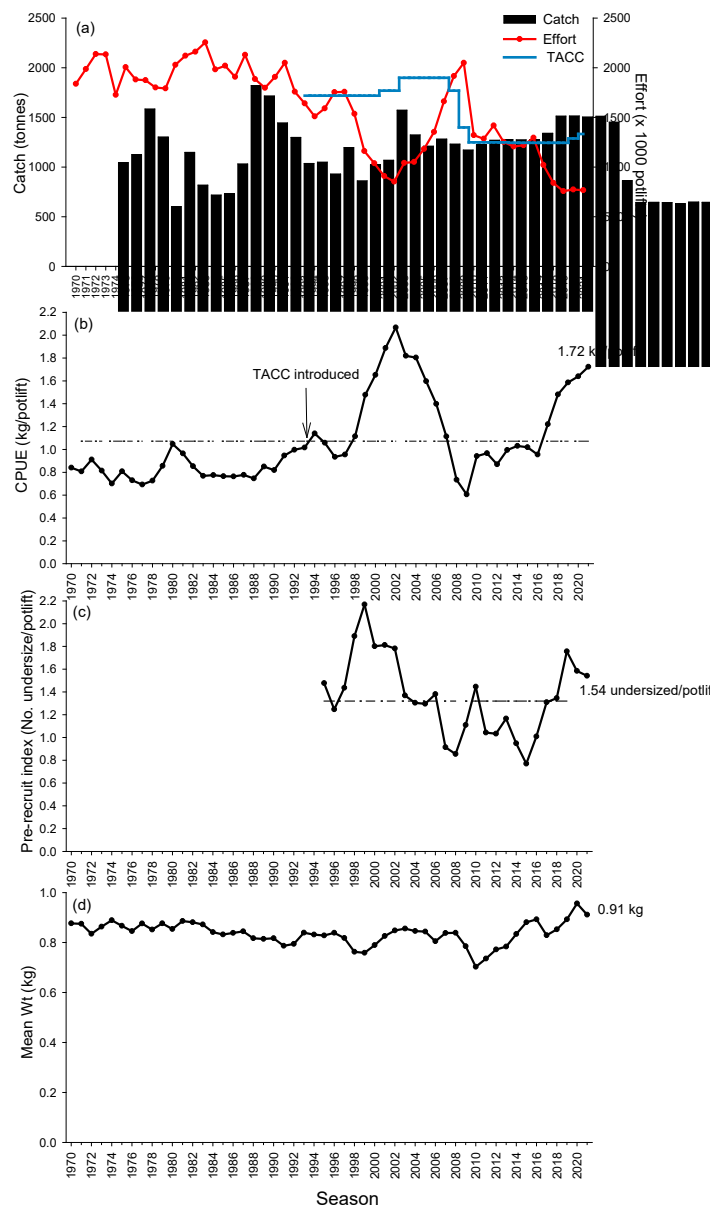


Figure 3-1 Fishery dependent outputs for the SZRLF. (a) Catch and effort including total allowable commercial catch (TACC) limit; (b) catch per unit effort (CPUE) including long-term average (dashed line); (c) pre-recruit index (PRI) including trigger reference point (dashed line); and (d) mean weight.

Table 3-1 Chronology of TACC versus landed catch in the SZRLF. *Includes 43 t carry-over from 2019/20 and 14 t from the 2020/21.

Season	TACC (t)	Landed catch (t)	Shortfall (t)	% TACC taken
1993	1720	1668.6	51.4	97
1994	1720	1721.5	-1.5	100
1995	1720	1683.6	36.4	98
1996	1720	1639.7	80.3	95
1997	1720	1680.0	40.0	98
1998	1720	1713.1	6.9	100
1999	1720	1717.3	2.7	100
2000	1720	1716.3	3.7	100
2001	1770	1717.5	52.5	97
2002	1770	1765.9	4.1	100
2003	1900	1895.9	4.1	100
2004	1900	1896.6	3.4	100
2005	1900	1888.7	11.3	99
2006	1900	1893.9	6.1	100
2007	1900	1849.6	50.4	97
2008	1770	1407.3	362.7	80
2009	1400	1243.3	156.7	89
2010	1250	1244.2	5.8	100
2011	1250	1242.1	7.9	99
2012	1250	1234.4	15.6	99
2013	1250	1246.7	3.3	100
2014	1245.7	1244.4	1.3	100
2015	1245.7	1244.4	1.3	100
2016	1245.7	1237.7	8.0	99
2017	1245.7	1245.7	0	100
2018	1245.7	1245.2	0.5	100
2019	1245.7	1202.4	43.3	96
2020	1289*	1275.5	13.5	99
2021	1334*	1327.1	6.9	99

3.1.2 Within-season trends

Within-season commercial catch trends presented here are based on logbook data from 2019 to 2021. Results from earlier seasons are accessible through previously published stock assessment reports (http://pir.sa.gov.au/research/publications/research_reports). In general, within-season trends in catch, effort, CPUE, PRI and mean weight within the SZRLF are consistent through time although the impact of overseas market disruption closures on catch, effort and CPUE trends are evident in both February of the 2019/20 season and November of the 2020/21 season (Figure 3-2a-d). The highest catches are taken during spring/summer from October to January, before declining thereafter.

The market closures occurred in late January and November of the 2019/20 and 2020/21 seasons respectively. Consequently, the catch in February of the 2019/20 season decreased to 6 t, when normally up to 100 t are landed, while just 39 t were landed in November of the 2020/21 season, when catches are usually >250 t (Figure 3-2a). The low catch in November resulted in higher catches later in the 2020/21 season, particularly during February (180 t) and March (173 t) compared to previous years. In 2021/22, the highest catch was taken in

November (295 t) and the lowest catch in June 2022 (<1 t). Within-season effort levels are largely consistent with those of catch (Figure 3-2a). In 2021/22, effort was highest in November (186,223 potlifts) and lowest in June (<1000 potlifts).

Legal-sized CPUE within the fishery is generally highest at the start of the season in spring/summer before decreasing thereafter (Figure 3-2b). In 2021/22 however, catch rates increased from October through to March (2.27 kg/potlift) and were consistently high across all months compared to recent seasons.

Over the last three seasons estimates of PRI were highest at the start of the season from September to January/February before consistently declining across all months to May thereafter (Figure 3-2c). The exception was 2021/22, when the PRI was highest in March (2.12 undersized/potlift). Care should be taken when interpreting June and July estimates due to low catch levels.

Monthly legal-sized mean weight generally increases as the season progresses with trends broadly similar over the last three seasons (Figure 3-2d). In 2020, mean weight was lowest in November (0.87 kg) and highest in May (1.19 kg). In 2021/22, mean weight was lowest in November (0.83 kg) and highest in May (1.01 kg). Care should be taken when interpreting June/July estimates in 2020/21 and 2021/22 due to low catch levels.

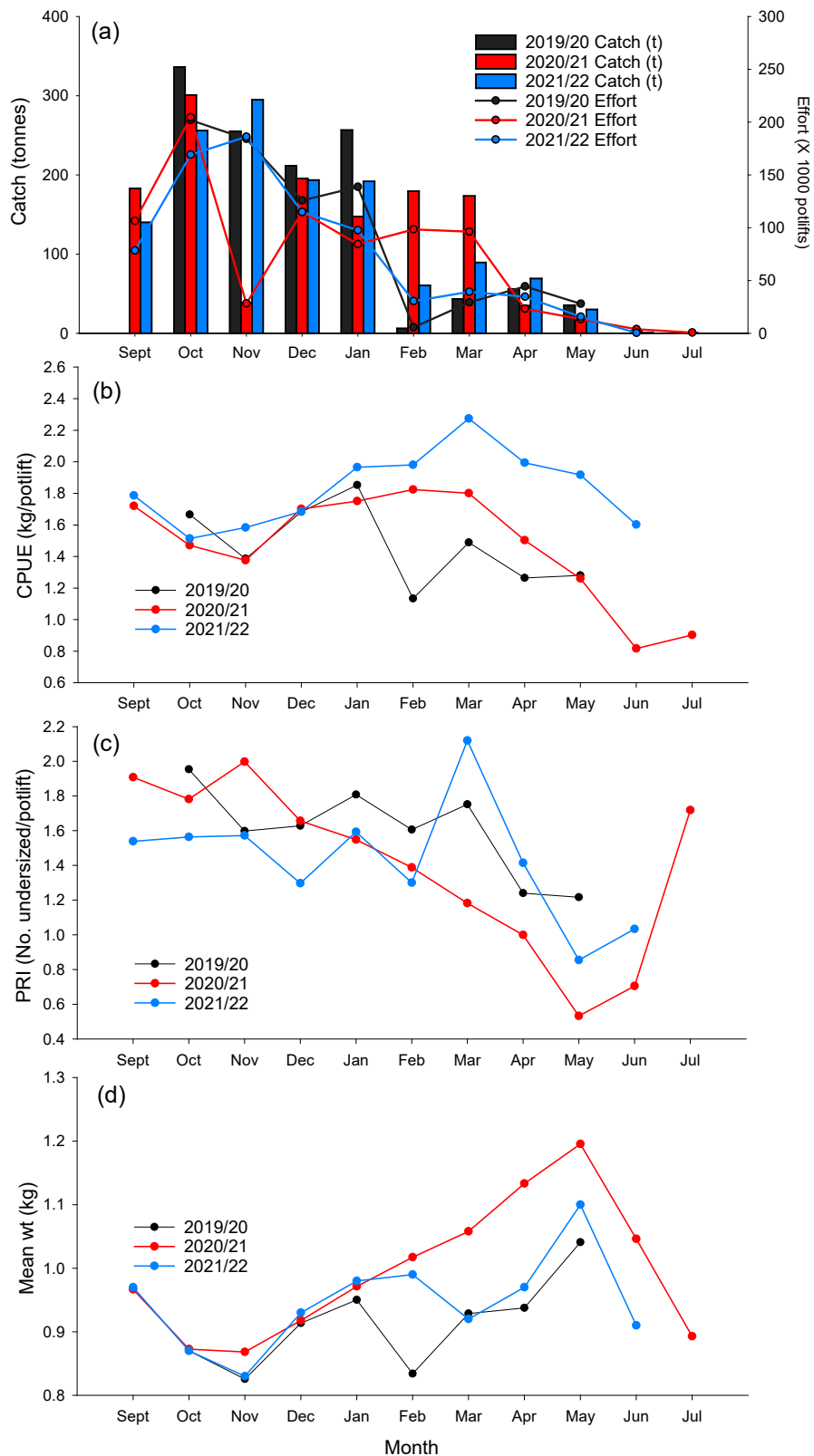


Figure 3-2 Within-season fishery dependent trends in the SZRLF. (a) Catch and effort; (b) catch per unit effort (CPUE); (c) pre-recruit index (PRI); and (d) mean weight.

3.1.3 Spatial trends

3.1.3.1 Marine Fishing Areas (MFAs)

Over 95% of the catch in the SZRLF is taken from MFAs 55, 56 and 58 (Figure 1-1). Historically, MFA 51 was a more important area, but its contribution has progressively decreased since the 1980s. This partially reflects the fact that lobsters harvested from MFA 51 are generally larger in size and have a lower market value given the preference for smaller individuals by overseas markets. In 2021, the catches in MFAs 51, 55, 56 and 58 were 57 t, 496 t, 415 t and 355 t, respectively (Figure 3-3a; Table 5-2).

In 2021, compared to 2020, effort increased in MFAs 51 and 55 but decreased in MFAs 56 and 58. Effort estimates in 2021 in MFAs 51, 55, 56 and 58 were 34,877, 306,454, 248,736, and 175,737 potlifts, respectively (Figure 3-3a; Table 5-2). Overall, effort estimates reflect considerable decreases in effort across all areas, particularly over the last four to five seasons.

Trends in CPUE are temporally consistent across MFAs (Figure 3-3b; Table 5-2). Following considerable declines between 2002 and 2009, catch rates remained relatively stable between 2010 and 2016. Over the next four seasons, however, catch rates have generally increased across all major MFAs. In 2021, compared to 2020, CPUE increased in MFAs 51, 56 and 58, but decreased in MFA 55. The 2021 estimates in MFAs 51, 55, 56 and 58 were 1.60, 1.62, 1.67 and 2.01 kg/potlift respectively.

Spatial estimates of the logbook-based PRI indicate that the number of undersized/potlift is consistently lower in the northern regions of the SZRLF (i.e. MFAs 51 and 55) compared to the southern regions (i.e. MFAs 56 and 58) (Figure 3-3c). Estimates have been either stable or increasing in most MFAs over recent seasons. In 2021, the estimates were 0.37, 0.50, 1.89 and 3.11 undersized/potlift, in MFAs 51, 55, 56 and 58 respectively.

Rock lobster legal-sized mean weight decreases with increasing latitude from the mouth of the River Murray (MFA 51) to the Victoria/South Australia border (MFA 58) (Figure 3-3d). It is most variable in MFA 51 but generally consistent across other MFAs. In 2021, compared to 2020, mean weight decreased in all areas except MFA 58. In 2021, the estimates in MFAs 51, 55, 56 and 58, were 1.19, 1.10, 0.84 and 0.78 kg, respectively.

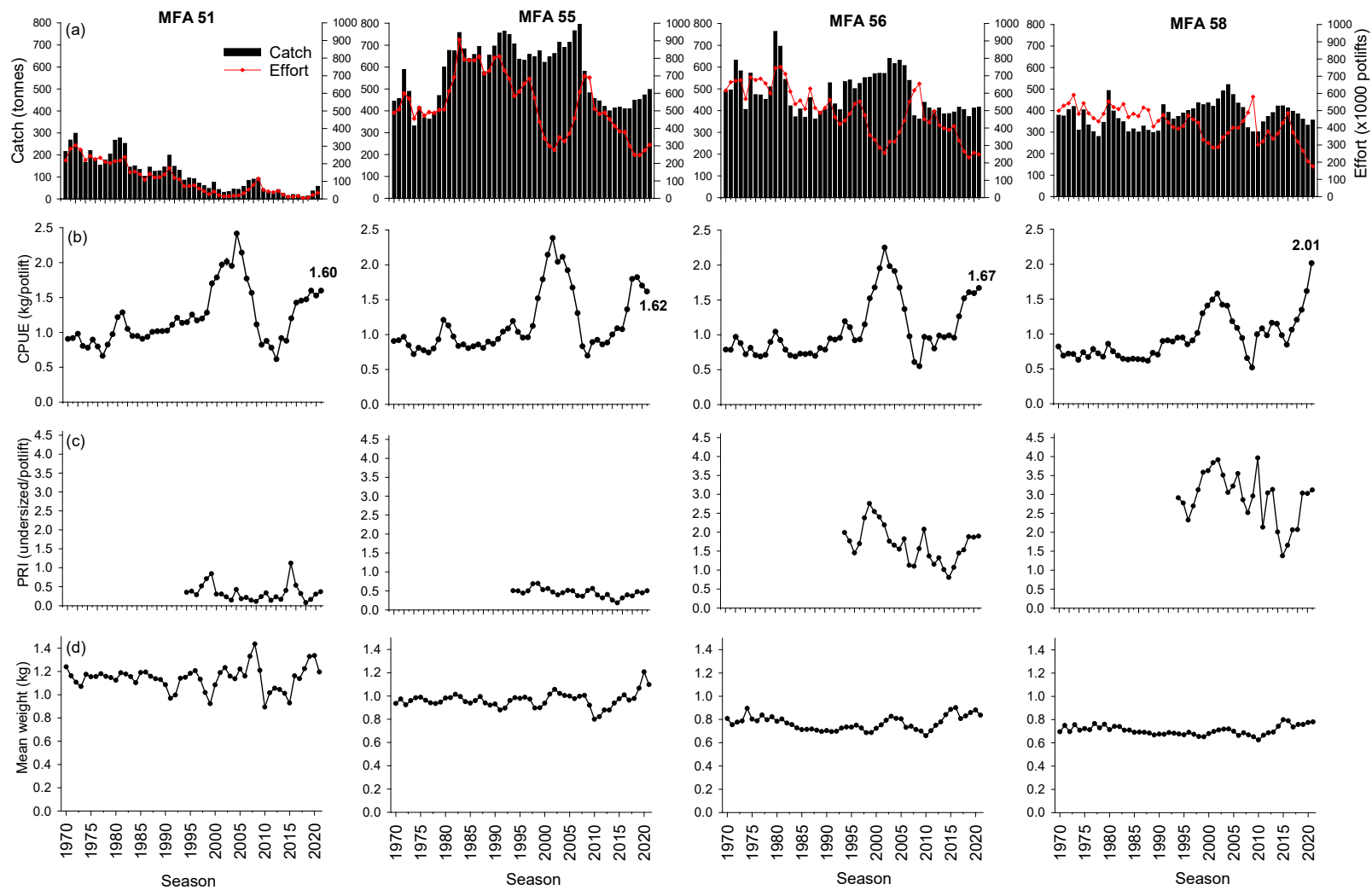


Figure 3-3 Spatial fishery dependent trends in the SZRLF. (a) Catch and effort; (b) catch per unit effort (CPUE); (c) pre-recruit index (PRI); and (d) mean weight.

3.1.3.2 Depth

In order to assess spatial trends by depth, logbook-derived catch data from four depth range categories of 0–30, 31–60, 61–90 and >90 m were analysed. With the exception of 2015, over the last nineteen fishing seasons, over 80% of the annual catch has been taken from depths of <60 m (Figure 3-4). In 2021, 96% of the total catch came from ≤ 60 m depth with 34% coming from 0-30 m and 62% from 31-60 m. These trends were also reflected in each of the major MFAs (Figure 3-4).

Despite reflecting the majority of annual catches, CPUE in depths of 0-30 m and 31-60 m is consistently lower than offshore areas of 61-90 m and >90 m (Figure 3-5). Trends largely reflected those at the zonal level with considerable decreases in all depth ranges from 2002 to 2009 before generally increasing over the last decade. In 2021, estimates were 1.75, 1.70, and 2.10 kg/potlift in 0-30, 31-60, and 61-90 m, respectively.

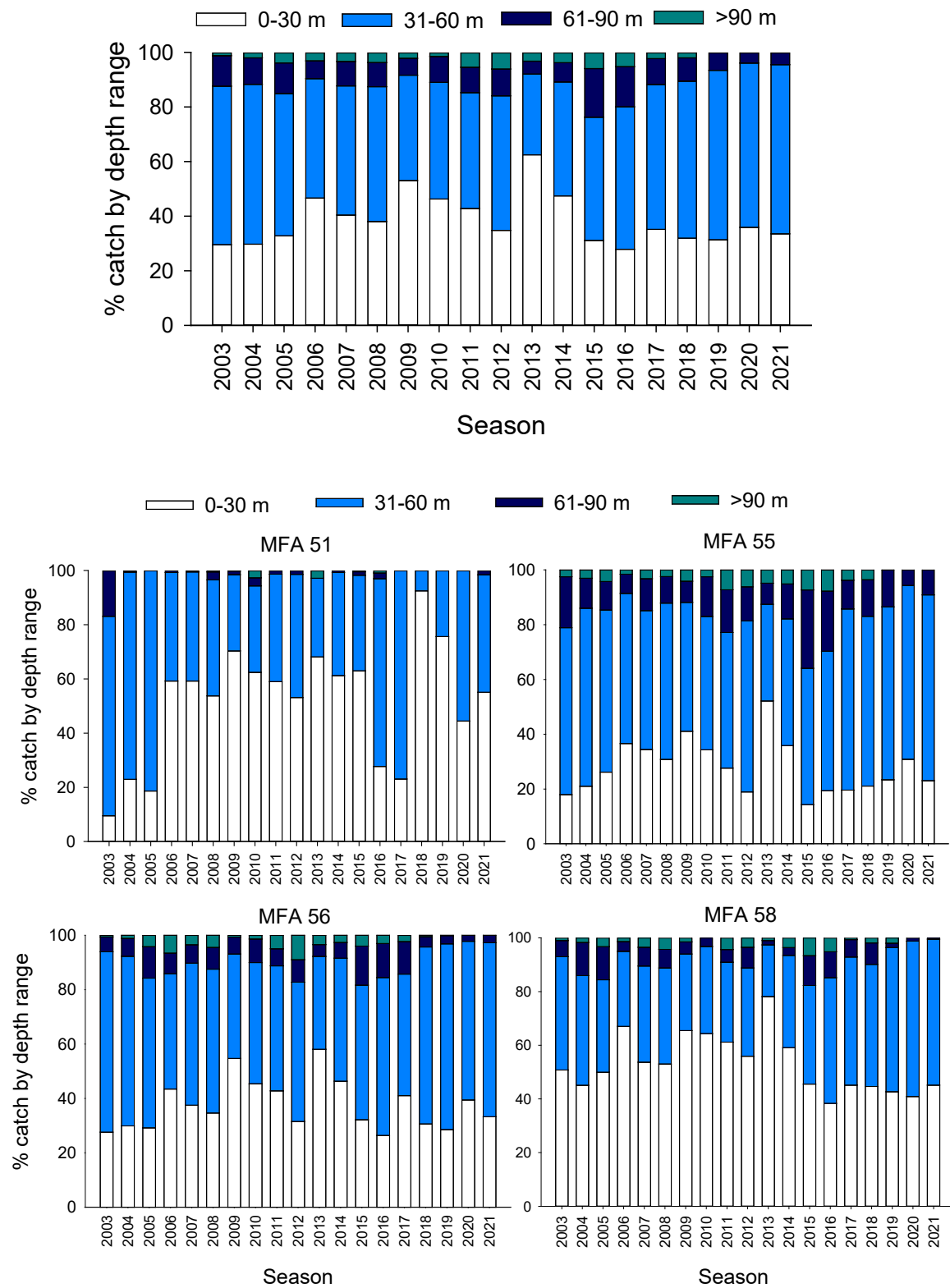


Figure 3-4 Percentage of catch taken from four depth ranges in the SZRLF by zone (top) and across the primary MFAs (bottom) from 2003 to 2021.

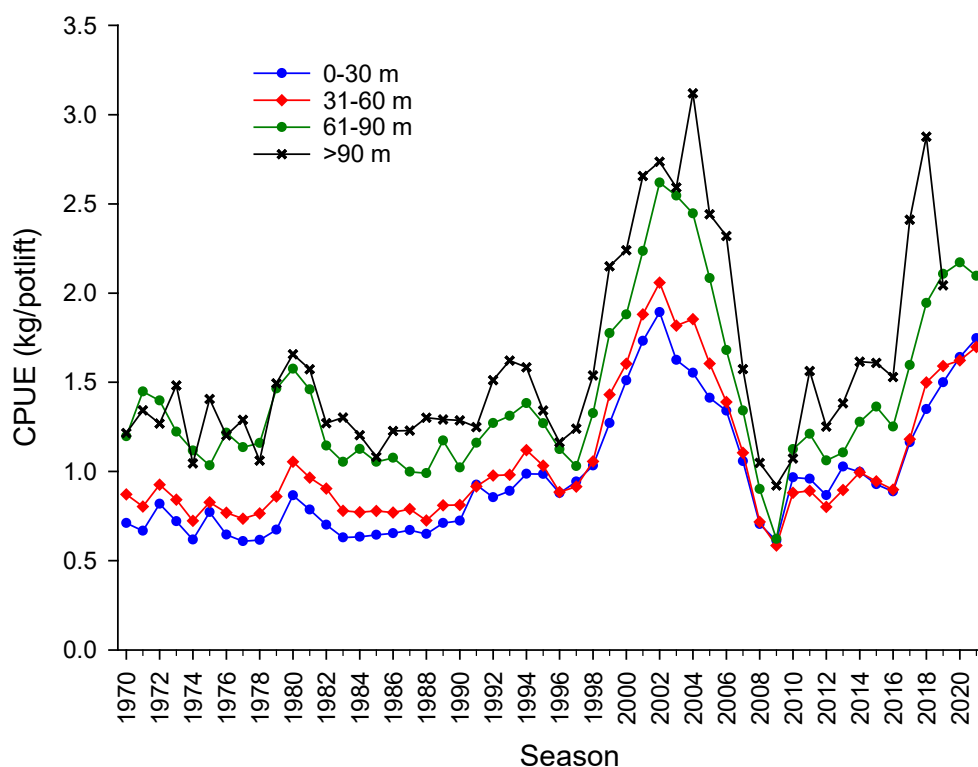


Figure 3-5 CPUE by depth in the SZRLF from 1970 to 2021.

3.1.4 Additional indices

3.1.4.1 Ovigerous (spawning) females

In 2021, the catch rate of ovigerous (spawning) lobsters (September to June) was 0.47 spawners/potlift, the fifth highest estimate on record (Figure 3-6a). In line with overall declines in legal-sized lobster catch rates (Figure 3-1b), the CPUE of spawners decreased from 2002 to a historical low of 0.05 spawners/potlift in 2010. Since then, the index has been variable, with notable increases over the last three seasons. It is important to note that as October was closed for the 2010 season, the CPUE for spawning lobsters in that season is likely to be underestimated since October is commonly the highest catch month for ovigerous individuals.

3.1.4.2 Predation mortality

The maori octopus (*Pinnoctopus cordiformis*) is the primary predator of Southern Rock Lobster within commercial fishing pots (Brock and Ward 2004). As a result, both the catch rate of octopus and dead lobsters appear correlated (Figure 3-6b; $R^2 = 0.63$). The number of dead lobsters/potlift has been variable through time ranging from 0.09 dead/potlift (2009) to 0.28 dead/potlift (2021) (Figure 3-6b). The highest octopus catch rate was observed in 2000 at 0.05

octopus/potlift, with the lowest in 2017 at 0.008 octopus/potlift (Figure 3-6b). In 2021, the estimate was 0.03 octopus/potlift.

3.1.4.3 Average days fished

In 2021, the average number of days fished in the SZRLF was 57 (S.D 19 days), the lowest estimate on record (Figure 3-6c). This index is a proxy for overall fishing effort and largely reflects trends in annual potlifts within the fishery (Figure 3-1a). From 2004 to 2009, the average number of days fished increased by 86% from 94 to 175, the highest on record, despite reductions to the TACC from 1,900 t to 1,400 t over the same period. In 2010, the TACC was reduced to 1,250 t and the average numbers of days fished decreased to 114 days, the lowest since 2005 (105 days). In 2013, the TACC was further reduced to 1245.7 t under the marine parks voluntary commercial fisheries catch and effort reduction program. In 2021, the TACC was increased to 1.320 t.

3.1.4.4 High-grading

In 2021, the estimate of high-grading (i.e. legal-sized lobsters returned to the water due to low market value) in the SZRLF was 57 t (Figure 3-6d). From 2003 to 2006, based on voluntary catch returns, the weight of lobsters high-graded exceeded 100 t annually. However, 2019 was the first season since 2008, that the estimates have exceeded 30 t. The decrease between 2003 and 2008 is likely to reflect overall declines in legal-sized catch rate across the fishery over this period (Figure 3-1b). It should be highlighted that overall reported values in logbooks are likely to be conservative since high-grade estimates are recorded on a voluntary basis.

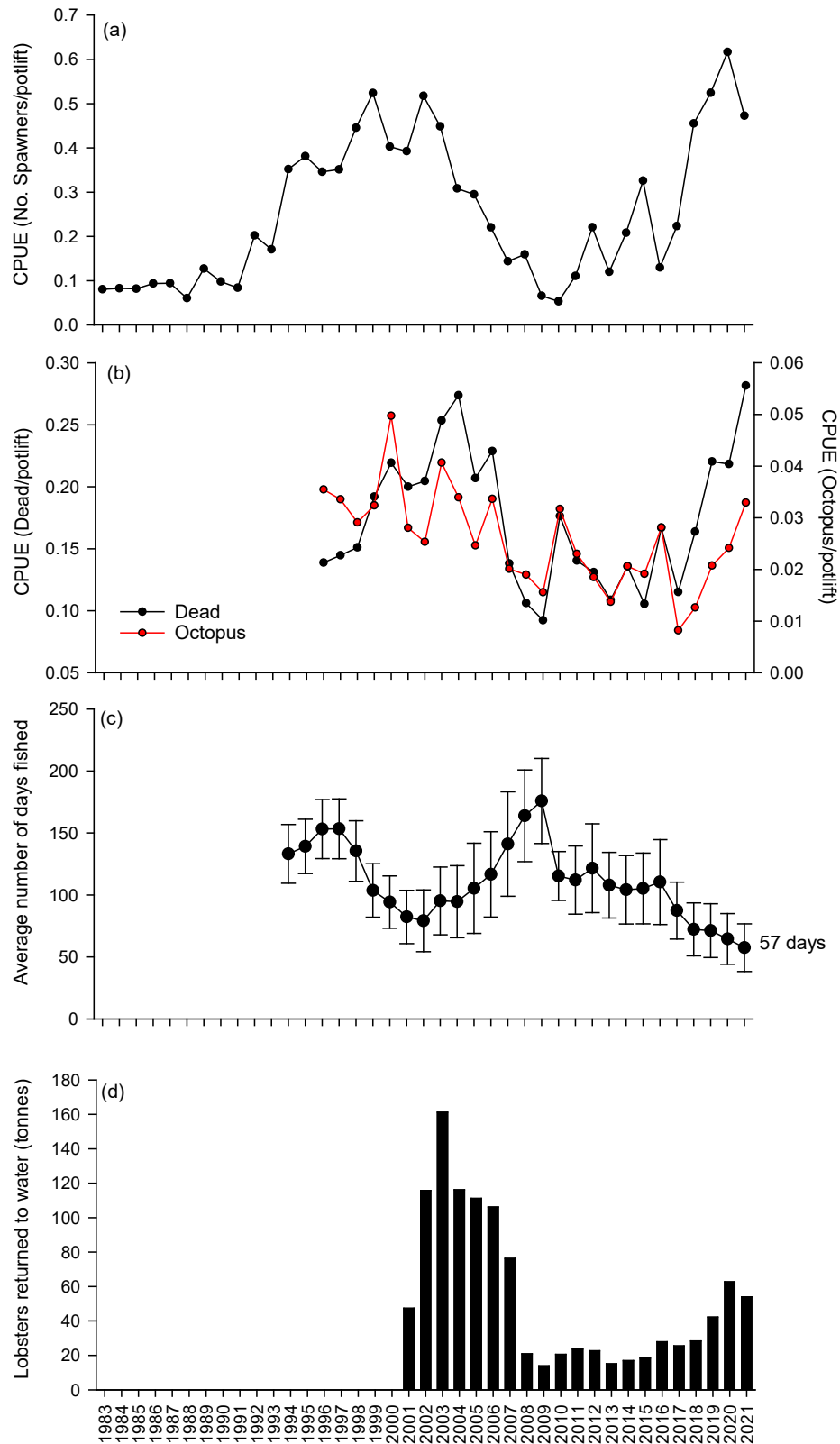


Figure 3-6 Additional fishery dependent indices in the SZRLF. (a) Catch rate of spawning lobsters; (b) predation mortality; (c) average number of days fished (with S.D.); and (d) levels of high-grading.

3.2 Recreational catch and effort

The most recent report on recreational rock lobster fishers was undertaken during the 2021/22 South Australian Recreational Fishing Survey (Beckmann et al. 2023). An estimated 126,136 lobsters (SE 36,706) were caught South Australia with a release rate of 36%. In total, the State-wide harvested catch equated to approximately 73 t (SE 45 t) of which 66 t (SE 41 t) was caught in the SZRLF. Catch was almost exclusively taken by boat-based fishers (99%).

These state-wide recreational catches can be compared with 102,931 (SE 58,763) lobsters caught in 2013/14 (Giri and Hall 2015) with a 39% release rate (equating to 75 t retained with approximately 71% by number from the SZRLF). Recreational catches are accounted for within LenMod fishery outputs.

3.3 Voluntary catch sampling

Since 1991, up to 26,000 lobsters have been measured annually in the SZRLF as part of the voluntary catch sampling program. The number measured is proportional to the level of participation in the program with data presented as number of lobsters/100 potlifts. In this report, annual length frequency data are presented from 2011-2021. Earlier annual length frequency distributions are available in published stock assessment reports (http://pir.sa.gov.au/research/publications/research_reports).

Male lobsters, which generally grow faster and reach larger sizes than females, range between 70 and 200 mm carapace length (CL). In contrast, few females are larger than 150 mm CL. In 2021, a total of 9,795 lobsters were sampled. Length-frequency data obtained through the voluntary catch sampling program over the last two seasons (Figure 3-7) support recent trends in pre-recruit indices (Figure 3-1c). Notably, the percentage of lobsters measured below the minimum legal size (MLS) of 98.5 mm CL decreased from 39% to 35% between 2020 and 2021, reflecting the decrease in undersized catch rate over the same period (Figure 3-1c).

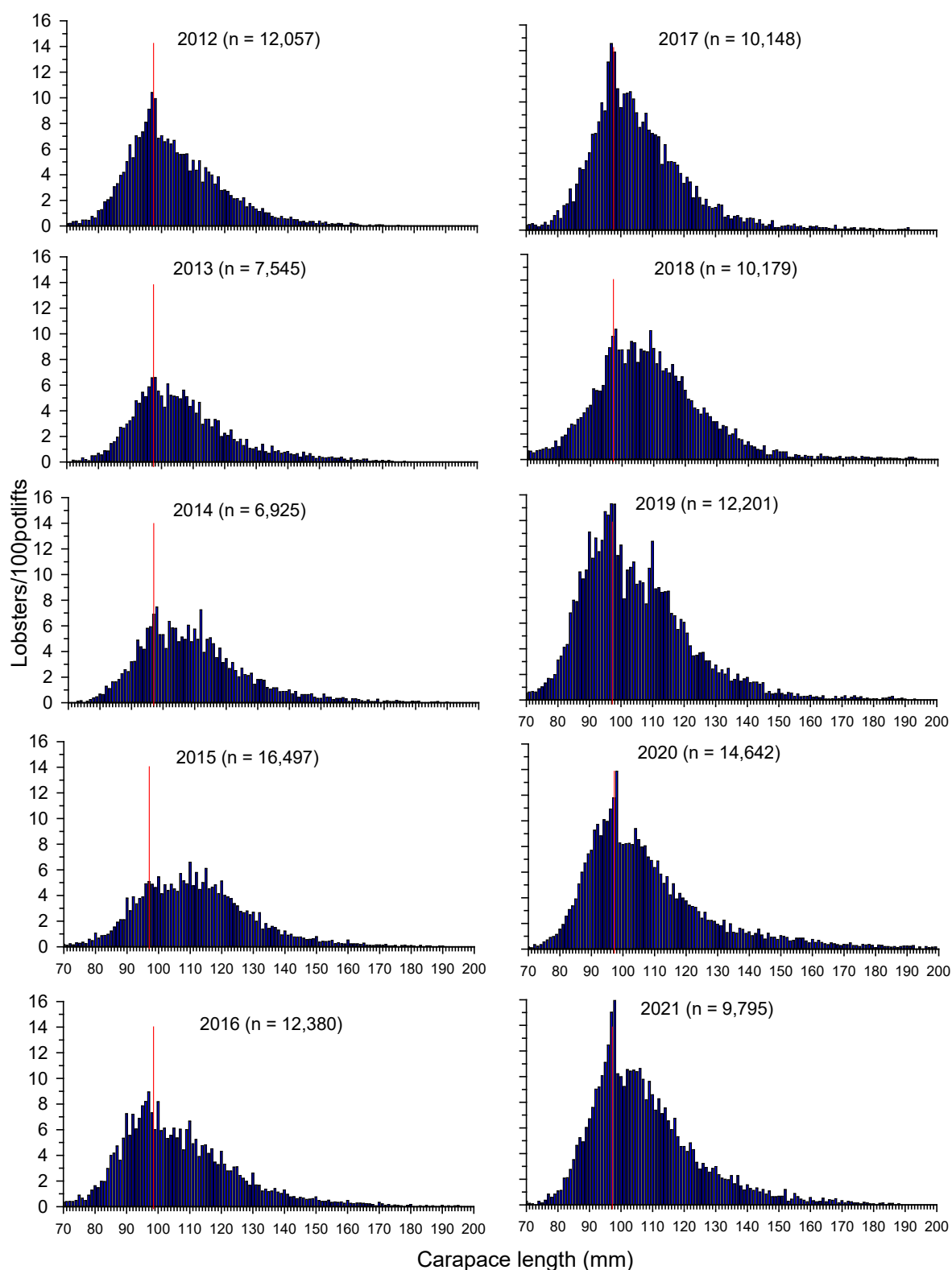


Figure 3-7 Length frequency distributions of male and female lobsters combined in the SZRLF from 2011 to 2021 (red line indicates MLS at 98.5 mm CL).

3.4 Puerulus monitoring program

Puerulus settlement indices (PSIs) in the SZRLF have been highly variable over time (Figure 3-8). In 2021, the estimate was 2.08 puerulus/collector, which is above both the median and long-term average for the fishery. Previous research has indicated that the period between settlement and recruitment to legal size in the SZRLF is approximately five years with undersized numbers correlated after four years (Linnane et al. 2014).

Based on this relationship, PSIs were correlated against logbook PRI (Figure 3-9) and CPUE data lagged by four and five years respectively, using PSI data from 1991 to 2017. CPUE and PRI data were closely correlated over the entire time series with a one-year lag ($R^2 = 0.75$) confirming that most pre-recruits enter the fishery one year later. PSIs from 2002 to 2017 were poorly correlated ($R^2 = 0.33$) with subsequent PRIs from 2006 to 2021 with no obvious relationship between PSI and CPUE over any of the time series.

Three of the highest PSIs on record were observed from 2005 to 2007 which were reflected in subsequent increases in PRIs in 2009 and 2010 (Figure 3-1c) and increases in catch rate as these recruits entered into the fishery in 2010 and 2011 (Figure 3-1). However, these relationships are not consistent throughout the time series. For example, increases in CPUE in 2017 and 2018 came from historically low settlements in 2012 and 2013. Recent trends over the last five seasons indicate that recruitment to the fishery will be close to the long-term average in the short-to-medium term.

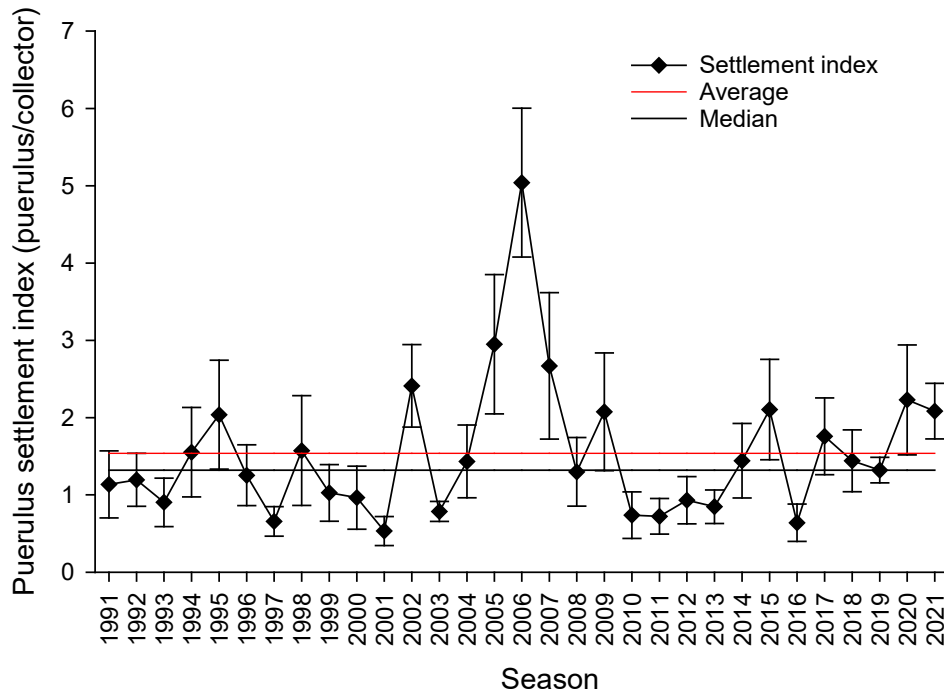


Figure 3-8 Puerulus settlement indices (mean \pm SE) in the SZRLF from 1991 to 2021. Dashed and solid black lines represent long-term (1991-2021) average and median estimates respectively.

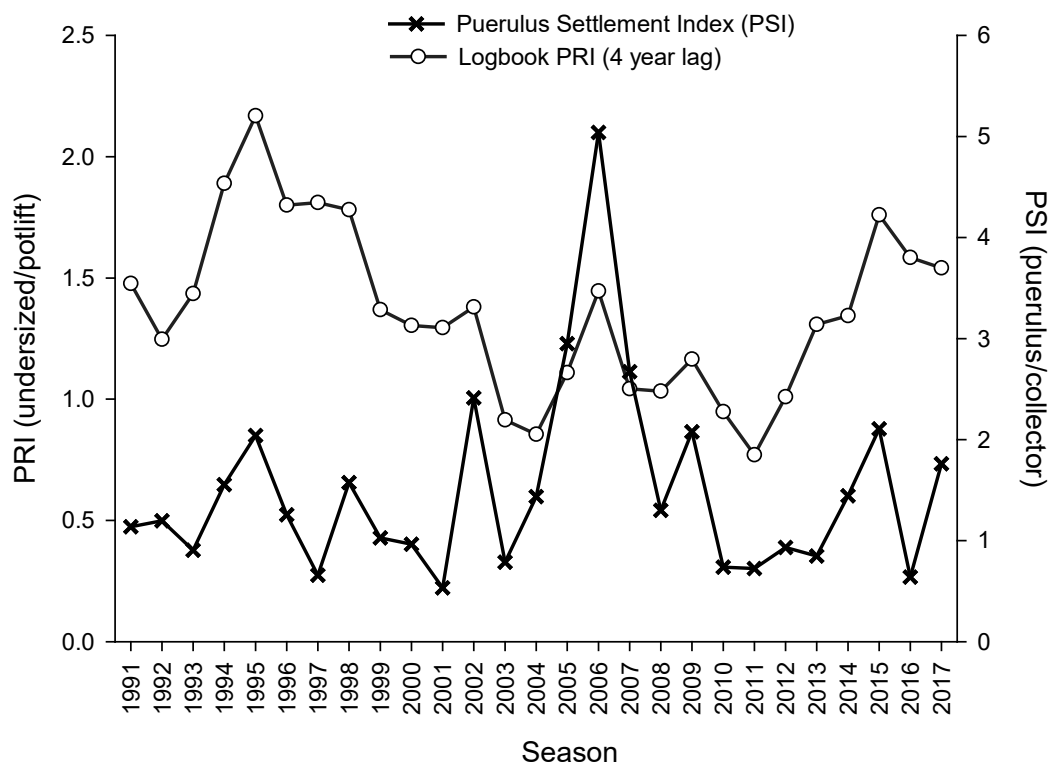


Figure 3-9 Correlations between SZRLF puerulus settlement lagged by four years with logbook PRI.

3.5 Fishery-Independent Monitoring Survey (FIMS)

The latest FIMS for the SZRLF 2022 season was completed in January 2023. Between 2006 and 2015, with the exception of 2015 for legal-size lobsters, the survey catch rates of both legal-size (Figure 3-10) and undersized (Figure 3-11) lobsters generally decreased. From 2016 to 2022 (except for 2019), the survey catch rate of legal-size lobsters increased from 0.46 to 1.51 lobsters/potlift, with the 2022 estimate the highest on record. With the exception of 2018, the survey catch rate of undersized lobsters also increased from 0.17 undersized/potlift in 2015 to 0.52 undersized/potlift in 2022. Survey undersized abundances are now the highest since 2010.

Trends in fishery-independent indices were compared against those from the commercial fishery. For legal-sized lobsters, both commercial and survey indices decreased from 2006 to 2009. However, after this period the trends for these indices diverged. In 2010, commercial catch rate increased and remained relatively stable at approximately 1.2–1.4 lobsters/potlift. In contrast, between 2008 and 2016, legal-sized survey CPUE remained at historically low levels ranging from 0.43 to 0.74 lobsters/potlift (Figure 3-10). Both indices have generally increased over the last 5 to 6 seasons.

Trends in survey and commercial undersized CPUE were similar between 2006 and 2009 (Figure 3-11). Since then, the rate of decline in abundances of undersized lobsters in surveys was greater than that observed in commercial catch rate data. Both survey and commercial data showed general increases in undersized catch rates between 2015 and 2021.

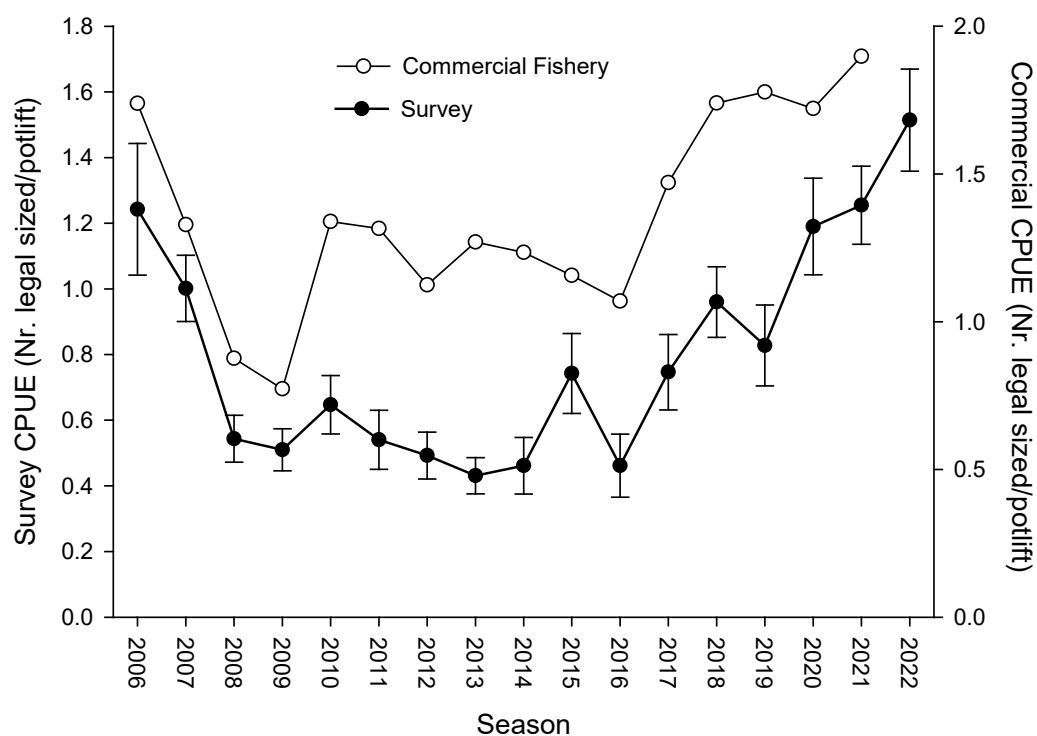


Figure 3-10 Comparison of legal size catch rates (nr/potlift) from commercial logbook data and fishery independent monitoring surveys.

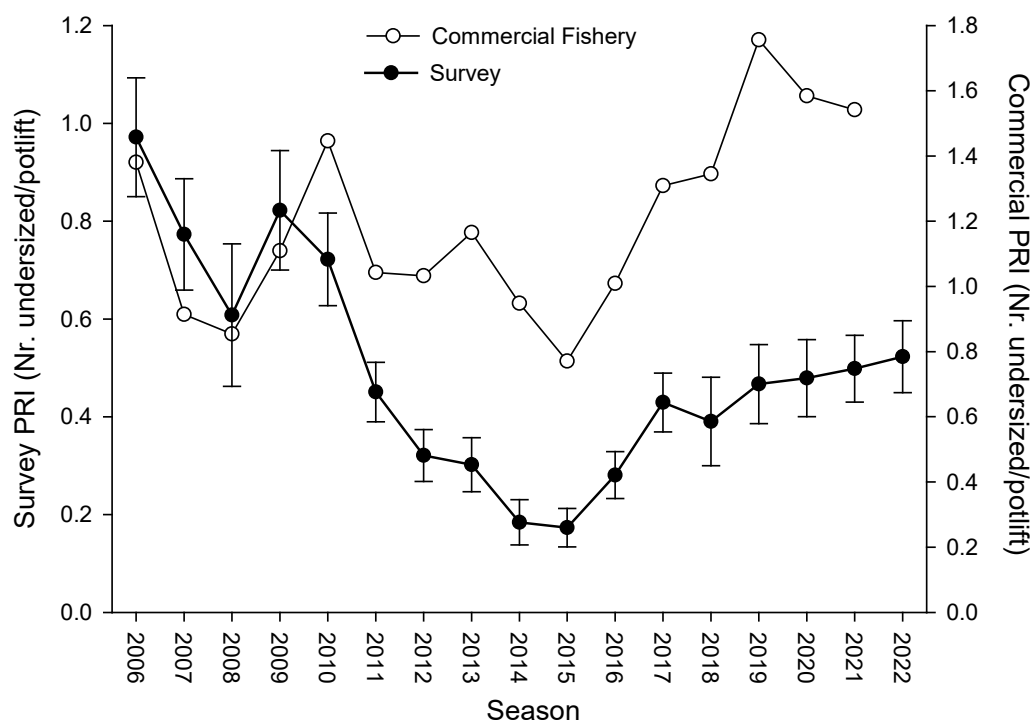


Figure 3-11 Comparison of undersized catch rates (nr/potlift) from commercial logbook data and fishery independent monitoring surveys.

3.6 “qR” and “LenMod” stock assessment models

3.6.1 Model fits

Both the qR and LenMod fishery model show good fits to the available data (Appendix 5). The qR model fitted closely to logbook totals of yearly catch in number (Figure 5-1) and catch in weight (Figure 5-2). For LenMod, model estimates of monthly catch in number and catch rate fitted closely to the reported monthly logbook catch in number (Cn) (Figure 5-3) and catch rate (Figure 5-4). In addition, model estimates for both males and females fitted well to length-frequency data from voluntary catch sampling as shown in monthly fits from the 2021 season (Figure 5-5).

3.6.2 Model outputs

The SZRLF qR and LenMod models show close agreement in estimated trends for indicators of performance and status. From 2002 to 2009, estimates of legal-sized biomass decreased by 62%, from approximately 5,000 t to 1,900 t (Figure 3-12a). Since then, biomass has increased, particularly over the past five seasons, and in 2021, the estimate was approximately 4,700 t, the highest since 2004.

Coincident with declines in lobster biomass, egg production estimates decreased by 52% from approximately 650 billion eggs in 2003 to 310 billion eggs in 2009 (Figure 3-12b). Over the last twelve seasons, egg production has trended upward, and in 2021 was estimated at approximately 598 billion. However, despite recent increases, overall egg production estimates are low with current estimates equating to 14% of unfished levels (Figure 3-12c).

Exploitation rate increased from approximately 37% in 2002 to 73% in 2009 (Figure 3-12d) in response to decreasing biomass over the same period (Figure 3-12a). Exploitation rate decreased considerably in 2010 and has continued to gradually decline since. In 2021, after five years of large reductions in exploitation rate reflecting corresponding increases in biomass, the estimate was approximately 29%, which is the lowest on record.

Model outputs indicate that recruitment to the fishery declined from approximately 4 million individuals in 1999 to 1 million individuals in 2008, a decrease of 75% (Figure 3-12e). Since then, the estimate has been variable and in 2021 ranged from 2.3–2.9 million individuals. Temporal trends in recruitment estimated by both models are correlated ($R^2=0.80$) with PRI from logbook data from 1995-2021 (Figure 3-12e).

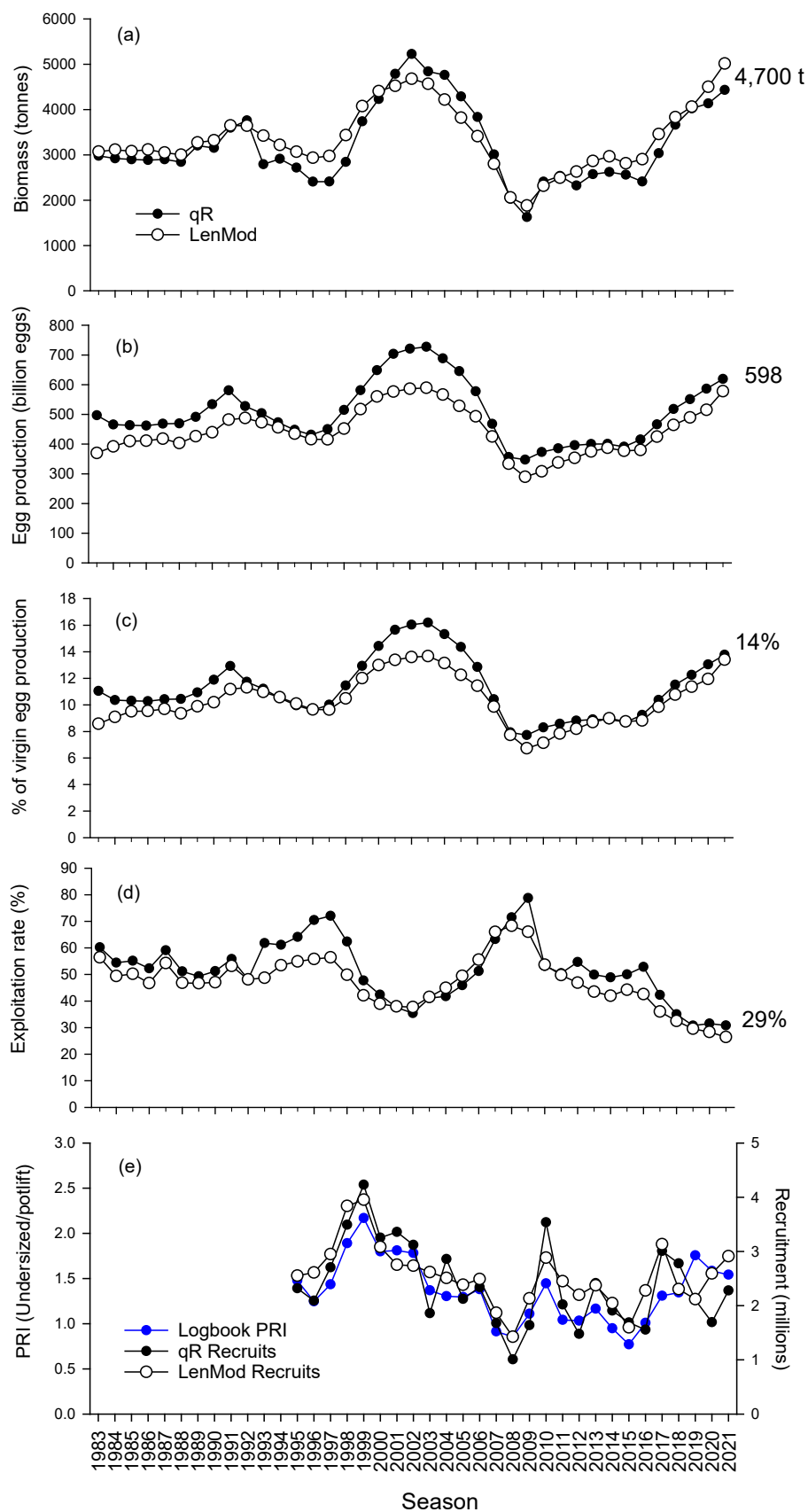


Figure 3-12 Fishery model outputs for the SZRLF. (a) Legal-size biomass; (b) Egg production; (c) % of unfished egg production; (d) Exploitation rate; and (e) Recruitment

4 DISCUSSION

4.1 Information sources used for assessment

Assessment of the SZRLF resource relies heavily on commercial fishery-dependent data collected from several long-term monitoring programs. It places particular emphasis on assessing catch rate trends of both legal and undersized lobsters. These trends are supported by fishery-independent surveys and outputs from both the qR and LenMod fishery models.

Current catch rates are not standardised. Linnane et al. (2018) presented standardised estimates which were reviewed by the South Australian rock lobster Harvest Strategy Working Group (HSWG) which noted the close agreement between nominal and standardised time-series. The HSWG recommended that periodic catch rate standardisation should be continued, but that nominal catch rate could remain as the primary indicator of lobster abundance.

4.2 Stock Status

The 2021 season reflected the third consecutive year that the SZRLF was impacted by overseas market issues due to a combination of international trade disputes and COVID. The impact can be observed in within-season trends over this period, e.g. catch in February of 2020 was reduced to 6 t when normally up to 100 t of lobster were landed, while in November 2020 just 39 t was taken when normally up to 250 t was caught. These impacts can affect important indicators such as catch rate, at least on a monthly level. For example, the low CPUE estimate observed in February 2020 is clearly a reflection of known market influences, rather than a reduction in lobster abundance. Despite these impacts, there are clear signals to indicate that the status of the SZRLF has improved in recent seasons.

In 2021, the SZRLF TACC increased from 1,246 t to 1,320 t having been fully taken for twelve consecutive seasons. Despite this increase, the current catch level of 1,327.1 t is low in a historical context with effort required to take the TACC having generally decreased since 2010. Reduced catches have resulted in a considerable improvement in SZRLF performance, particularly since 2015. Legal-size catch rates have increased by 79% over the last five seasons and are now the highest since 2004. CPUE is now above both the long-term average and TrRP with increases observed across broad spatial and temporal scales. Similar increases in legal-size catch rate have also been observed over recent seasons in fishery-independent surveys.

As well as reduced catch levels, recent increases in catch rate are likely driven by improved recruitment to the fishable biomass, particularly in recent seasons. After a long-term decline from 1999 to 2015, undersized abundances subsequently increased by 129% to 2019. Despite a 13% decline over the last two seasons, current PRI levels remain above the TrRP. Given that the period between PRI and recruitment to the fishery is approximately one year, PRI levels have translated to increases in legal-size CPUE. Recent recruitment increases are supported by independent model estimates of recruitment, undersize length frequency distributions and fishery-independent PRI estimates.

In the SZRLF, based on tag-recapture studies, the period between puerulus settlement and the PRI is ~4 years, with recruitment into the fishery occurring one year later (i.e. 5 years after settlement) (McGarvey et al. 1999; Linnane et al. 2013; 2014). While correlations between the PRI and CPUE are strong using a one-year lag, consistent correlations between settlement and recruitment are yet to emerge. For example, high levels of settlement observed in 2005, 2006 and 2009 reflected the increase in PRI in 2009, 2010 and 2013 which, combined with reduced catch levels, is likely to have contributed to elevated commercial CPUE over recent seasons. However, these relationships are not consistent over time as highlighted by the fact that the recent increases in CPUE in 2017 and 2018 came after below average settlements in 2012 and 2013.

Outputs from the qR and LenMod fishery models agree closely in relation to the current stock status. Following a considerable decline between 2002 and 2009, legal-sized biomass has been stable or increasing over the last twelve seasons. Given that catch has remained constant over this period, exploitation rate has decreased, with the 2021 estimate the lowest on record. Overall egg production levels in the fishery remained low in 2021 at just 14% of %UEP but with recent increases in line with biomass.

In 2019, a new Management Plan for the SZRLF was formally adopted (PIRSA 2020). To address low levels of egg production, the harvest strategy focuses on increasing egg production towards a stock improvement target of 20% by 2035. Importantly, the primary performance indicator (legal-size CPUE) in this harvest strategy is now linked to a definition of stock status (Table 1-5). In 2021, the CPUE was 1.72 kg/potlift, which is above the TrRP of 0.60 kg/potlift. As a result, the SZRLF stock is classified as “**sustainable**”. This means that the current fishing mortality is being adequately controlled to avoid the stock becoming recruitment impaired.

4.3 Assessment Uncertainties

This assessment is reliant on fishery-dependent data as an indicator of stock abundance. However, it is widely acknowledged that catch rate estimates, based on fishery-dependent data, can be influenced by factors such as gear selectivity, changes in fishing patterns, fleet efficiency or fleet dynamics over time (Maunder et al. 2006). Nevertheless, two lines of evidence suggest that the catch rate trends detailed in this report are robust indicators of overall lobster abundance. Firstly, trends in catch rate are highly consistent across large spatial scales. For example, across the four major MFAs of the fishery, catch rate simultaneously increased from the mid-1990s to early 2000s, then declined to historical lows from 2002 to 2009, before gradually recovering over the next eight seasons. Similar trends were also observed across a range of depth categories within MFAs. These fishery-wide trends suggest recruitment and subsequent survival in the SZRLF occur consistently across large spatial scales, and that these trends are well reflected in the broad seasonal and spatial coverage (>1 million potlifts annually) used to compute catch rate.

Secondly, a previous stock assessment report (Linnane et al. 2018) highlighted that when nominal catch rate was standardised for factors such as year, month, depth, MFA, mean weight, licence and consumer price index (CPI), the nominal and standardised CPUE time series were closely aligned. While no meaningful difference, and therefore no improvement was observed, the standardisation did not include two factors thought to be important in other lobster fisheries. Specifically, standard catch logs in South Australian lobster fisheries do not record the “vessel” or “skipper”. In the Victorian rock lobster fishery, “vessel” and “skipper” were identified as the two most important factors in legal-size lobster catch rate standardisation (Feenstra et al. 2019).

4.4 Future Work

A new FRDC project “Assessing the efficiency of alternative bait options for the Southern Rock Lobster (*Jasus edwardsii*) fishery” aims to begin in 2023. The project will investigate the use of synthetic bait options within the fishery with the objective of increasing overall catch efficiency. Trials will be undertaken in both Northern and Southern Zones during the 2023/24 season. This project will address the opportunity to evaluate the effectiveness of alternative bait options by quantifying legal size lobster catch rates attained from alternative baits with those attained from traditional bait types. Bycatch associated with each bait type will also be quantified.

BIBLIOGRAPHY

- Annala, J.H. and Breen, P.A. (1989) Yield- and egg-per-recruit analyses for the New Zealand rock lobster, *Jasus edwardsii*. New Zealand Journal of Marine and Freshwater Research 23: 93-105.
- Beckmann, C.L., Durante, L.M., Graba-Landry, A., Stark, K.E. and Tracey, S.R. (2023). Survey of Recreational Fishing in South Australia 2021-22. Report to PIRSA Fisheries and Aquaculture. South Australian Research and Development Institute (Aquatic Sciences), Adelaide. SARDI Publication No. F2022/000385-1 SARDI Research Report Series No. 1161. 185pp.
- BDO Econsearch (2022) Economic and Social Indicators for the South Australian Southern Zone Rock Lobster Fishery, 2020/21. A report for the Department of Primary Industries and Regions. Adelaide, 67 pp.
- Booth, J.D. and Tarring, S.C. (1986) Settlement of the red rock lobster, *Jasus edwardsii*, near Gisborne, New Zealand. New Zealand Journal of Marine and Freshwater Research, 20: 291–297.
- Booth, J.D., Street, R.J. and Smith, P.J. (1990) Systematic status of the rock lobsters *Jasus edwardsii* from New Zealand and *J. novaehollandiae* from Australia. New Zealand Journal of Marine and Freshwater Research 24: 239-49.
- Booth, J.D., Carruthers, A.D., Bolt, C.D. and Stewart, R.A. (1991) Measuring the depth of settlement in the red rock lobster, *Jasus edwardsii*. New Zealand Journal of Marine and Freshwater Research 25: 123-32.
- Booth, J.D., and McKenzie, A. (2009). Strong relationships between levels of puerulus settlement and recruited stock abundance in the red rock lobster (*Jasus edwardsii*) in New Zealand. Fisheries Research, 95:161-168.
- Brasher, D.J., Ovenden, J.R. and White, R.W.G. (1992) Mitochondrial DNA variation and phylogenetic relationships of *Jasus* spp. (Decapoda: Palinuridae). Journal of Zoology 227: 1-16.
- Breen, P.A. and McKoy, J.L. (2002) Review of current and past stock assessments for the South Australian Northern Zone Rock Lobster: Report by NIWA to the NZRL FMC Fishery. NIWA, Wellington.
- Brock, D.J. and Ward, T.M. (2004) Octopus (*Octopus maorum*) bycatch and lobster (*Jasus edwardsii*) mortality in the South Australian Rock Lobster Fishery. Fisheries Bulletin 102: 430-440.
- Bruce, B., Bradford, R., Griffin, D., Gardner, C. and Young, J. (1999) A synthesis of existing data on larval rock lobster distribution in southern Australia. Final report to the Fisheries Research and Development Corporation, Canberra, pp. 1-57, 96/107.
- Bruce, B., Griffin, D. and Bradford, R. (2007) Larval transport and recruitment processes of southern rock lobster. FRDC and CSIRO Marine and Atmospheric Research publication Nr. 2002/007. ISBN Nr 1 9210061 01 4.
- Caputi, N., Brown, R.S. and Chubb, C.F. (1995) Regional prediction of the western rock lobster, *Panulirus cygnus*, commercial catch in Western Australia. Crustaceana 68:245-256.
- Currie, D.R., Sorokin, S.J., and Ward, T.J.M. (2006) Survey of recreational Rock Lobster Fishing in South Australia during 2004/05. South Australia Research and Development Institute Research Report Series No. 123. South Australia Research Development Institute, South Australia. 36 pp.

- Elsayir, H. A (2014) Comparison of Precision of Systematic Sampling with Some other Probability Samplings. American Journal of Theoretical and Applied Statistics. Vol. 3, No. 4, 2014, pp. 111-116. doi: 10.11648/j.ajtas.20140304.16.
- Feenstra, J. McGarvey, R., Linnane, A., Haddon, M., Matthews, J. and Punt, A.E. (2019) Impacts on CPUE from vessel fleet composition changes in an Australian lobster (*Jasus edwardsii*) fishery, New Zealand Journal of Marine and Freshwater Research, DOI: 10.1080/00288330.2018.1556166.
- Flood, M., Stobutzki, I., Andrews, J., Ashby, C., Begg, G., Fletcher, R., Gardner, C., Georgeson, L., Hansen, S., Hartmann, K., Hone, P., Horvat, P., Maloney, L., McDonald, B., Moore, A., Roelofs, A., Sainsbury, K., Saunders, T., Smith, T., Stewardson, C., Stewart, J., and Wise, B. (eds) (2014) Status of key Australian fish stocks reports 2014, Fisheries Research and Development Corporation, Canberra.
- Fournier, D.A., Skaug, H.J., Ancheta, J., Ianelli, J., Magnusson, A., Maunder, M.N., Nielsen, A. and Sibert, J. (2012) AD Model Builder: using automatic differentiation for statistical inference of highly parameterized complex nonlinear models. Optimization Methods and Software 27:233-249.
- Gardner, C., Frusher, S.D., Kennedy, R.B. and Cawthorn, A. (2001) Relationship between settlement of southern rock lobster pueruli, *Jasus edwardsii*, and recruitment to the fishery in Tasmania, Australia. Marine and Freshwater Research 52:1271-5.
- Giri, K., and Hall, K. (2015) South Australian Recreational Fishing Survey. Fisheries Victoria Internal Report Series No. 62.
- Henry, G.W. and Lyle, J.M. (eds) (2003) The National Recreational and Indigenous Fishing Survey. Australian Government Department of Agriculture, Fisheries and Forestry, Canberra. FRDC Project No. 99/158.
- Hobday, D. and Punt, A.E. (2001) Size-structured population modelling and risk assessment of the Victorian southern rock lobster, *Jasus edwardsii*, fishery. Marine and Freshwater Research 52: 1495-1507.
- Johnston, S.J. and Bergh, M.O. (1993) Size-based estimates of survivorship for the South African rock lobster *Jasus lalandii*. Fisheries Research 18: 277-304.
- Jones, K. (2009) South Australian Recreational fishing Survey. PIRSA Fisheries, Adelaide, 84 pp. South Australian Fisheries Management Series Paper No 54.
- Linnane, A., Dimmlich, W. F. and Ward T. M. (2005). Movement patterns of the southern rock lobster, *Jasus edwardsii*, off South Australia. New Zealand Journal of Marine and Freshwater Research, 39: 335-346.
- Linnane, A., James, C., Middleton, J., Hawthorne, P., and Hoare, M. (2010) Impact of wind stress anomalies on the seasonal pattern of southern rock lobster (*Jasus edwardsii*) settlement in South Australia. Fisheries Oceanography 19: 290–300.
- Linnane, A., McGarvey, R., Hoare, M., and Hawthorne, P. (2013) The importance of conserving recruitment pulses in rock lobster (*Jasus edwardsii*) fisheries where puerulus settlement is low or highly sporadic, Marine Biology Research, 9: (1), 97-103.
- Linnane, A., McGarvey, R., Gardner, C., Walker, T.I., Matthews, J., Green, B., and Punt, A. (2014) Large-scale patterns in puerulus settlement and links to fishery recruitment in the southern rock lobster (*Jasus edwardsii*) across southeastern Australia. ICES Journal of Marine Science 71, 528–536.
- Linnane, A., McGarvey, R., Matthews, J., Feenstra, J., Jones, A. and Toumazos, K. (2016) Informing spatial and temporal management of the South Australian Northern Zone Southern Rock Lobster (*Jasus edwardsii*) fishery. Final Report to the Fisheries Research and Development Corporation. Adelaide, ISBN 978-1-921563-89-8.

- Linnane, A., McGarvey, R., Feenstra, J. and Hawthorne, P. (2018). Southern Zone Rock Lobster (*Jasus edwardsii*) Fishery 2016/17. Fishery Assessment Report to PIRSA Fisheries and Aquaculture. South Australian Research and Development Institute (Aquatic Sciences), Adelaide. SARDI Publication No. F2007/000276-12. SARDI Research Report Series No. 988. 81pp.
- MacDiarmid, A.B. (1989) Moulting and reproduction of the spiny lobster *Jasus edwardsii* (Decapoda: Palinuridae) in northern New Zealand. *Marine Biology* 103: 303-10.
- Maunder, M.N., Sibert, J.R., Fonteneau, A., Hampton, J., Kleiber, P. and Harley S.J. (2006) Interpreting catch per unit effort data to assess the status of individual stocks and communities. *ICES Journal of Marine Science*, 63: 1373-1385.
- McGarvey, R., Matthews, J.M. and Prescott, J.H. (1997) Estimating lobster recruitment and exploitation rate from landings by weight and numbers, and age-specific weights. *Marine and Freshwater Research* 48: 1001-08.
- McGarvey, R., Ferguson, G.J. and Prescott, J.H. (1999) Spatial variation in mean growth rates of rock lobster, *Jasus edwardsii*, in South Australian waters. *Marine and Freshwater Research* 50: 333-42.
- McGarvey, R. and Feenstra, J.E. (2001) Estimating length-transition probabilities as polynomial functions of pre-moult length. *Marine and Freshwater Research* 52: 1517-1526.
- McGarvey, R. and Matthews, J.M. (2001) Incorporating numbers harvested in dynamic estimation of yearly recruitment: onshore wind in interannual variation of South Australian rock lobster (*Jasus edwardsii*). *Journal of the International Council for the Exploration of the Sea* 58: 1092-99.
- McGarvey, R. and Pennington, M. (2001) Designing and evaluating length-frequency surveys for trap fisheries with application to the southern rock lobster. *Canadian Journal of Fisheries and Aquatic Sciences* 58: 254-261.
- McGarvey, R., Punt, A.E. and Matthews, J.M. (2005) Assessing the information content of catch-in-numbers: A simulation comparison of stock assessment methods based on catch and effort totals. In 'Fisheries Assessment and Management in Data-Limited Situations.' (Eds. G.H. Kruse, V.F. Gallucci, D.E. Hay, R.I. Perry, R.M. Peterman, T.C. Shirley, P.D. Spencer, B. Wilson, and D. Woodby). Alaska Sea Grant College Program, University of Alaska, Fairbanks, pp. 635-653.
- McGarvey, R., Punt, A.E., Gardner, C., Feenstra, J., Hartman K., Hoshino, E., Burch, P., Paterson, S., Matthews, J., Linnane, A., Rippin, L. and Morison, J. (2014) Bioeconomic decision support tools for Southern Rock Lobster. Report to the Australian Seafood Cooperative Research Centre. Project No. 2009/714.20. 200pp.
- McGarvey, R.; Punt, A.E., Matthews, J.M., Feenstra, J.E., Gardner, C., Burch, P., Hartmann, K., Linnane, A. (2015) Comparing size-limit and quota policies to increase economic yield in a lobster fishery. *Canadian Journal of Fisheries and Aquatic Sciences* 72: 1292-1305.
- McGarvey, R., Matthews, J.M., Feenstra, J.E., Punt, A.E. and Linnane, A. (2016) Using bioeconomic modeling to improve a harvest strategy for a quota-based lobster fishery. *Fisheries Research* 183: 549-558.
- McGarvey, R., Linnane, A., Matthews, J.M., and Jones, A. (2017) Decision rules for quota setting to support spatial management in a lobster (*Jasus edwardsii*) fishery. *ICES Journal of Marine Science* 74: 588-597. doi:10.1093/icesjms/fsw177.
- Morgan, E.M., Green, B.S., Murphy, N.P. and Strugnell, J.M. (2013) Investigation of genetic structure between deep and shallow populations of the southern rock lobster, *Jasus edwardsii* in Tasmania, Australia. *PloS one*, 8(10), p.e77978.

- Ovenden, J.R., Brasher, D.J. and White, R.W.G. (1992) Mitochondrial DNA analyses of red rock lobster, *Jasus edwardsii*, supports an apparent absence of population subdivision throughout Australasia. *Marine Biology* 112: 319-26.
- Piddocke, T., C. Ashby, K. Hartmann, A. Hesp, P. Hone, J. Klemke, S. Mayfield, A. Roelofs, T. Saunders, J. Stewart, B. Wise and J. Woodhams (eds) 2021, Status of Australian fish stocks reports 2020, Fisheries Research and Development Corporation, Canberra.
- PIRSA (2013). The South Australian Fisheries Management Series. Paper Nr 63: Management Plan for the South Australian Commercial Southern Zone Rock Lobster Fishery. ISSN 1322-8072.
- PIRSA (2020). The South Australian Fisheries Management Series. Paper Nr 79: Management Plan for the South Australian Commercial Southern Zone Rock Lobster Fishery. ISSN 1322-8072.
- Phillips, B. (2013) Lobsters: Biology, Management, Aquaculture and fisheries, 2nd Edition. Wiley-Blackwell Publishing Ltd. ISBN: 978-0-470-67113-9.
- Phillips, B.F. and McWilliam, P.S. (2009) Spiny lobster development: where does successful metamorphosis to the puerulus occur?: a review. *Reviews in Fish Biology and Fisheries* 19: 193-215.
- Prescott, J., McGarvey, R., Ferguson, G., and Lorkin, M. (1996) Population dynamics of the southern rock lobster in South Australian waters. Final report to the Fisheries Research and Development Corporation 93/086 and 93/087, 1-64.
- Prescott, J., McGarvey, R., Jones, A., Peso, A., Ferguson, G., Casement, D., Xiao, Y., and McShane, P. (1998) Southern Zone Rock Lobster. South Australian Fisheries Assessment Series 98/3. SARDI Aquatic Sciences, Adelaide. 22p.
- Punt, A.E., and Kennedy, R.B. (1997) Population modelling of Tasmanian rock lobster, *Jasus edwardsii*, resources. *Marine and Freshwater Research* 48: 967-80.
- Sloan, S., and Crosthwaite, K. (2007) Management plan for the South Australian southern zone rock lobster fishery. The South Australian Fishery Management Series. PIRSA Fisheries publication, Adelaide, Australia.
- Smith, P.J., McKoy, J.L. and Machin, P.J. (1980) Genetic variation in the rock lobsters *Jasus edwardsii* and *Jasus novaehollandiae*. *New Zealand Journal of Marine and Freshwater Research* 14: 55-63.
- Thomas, L., (2012) Population genetics of the red rock lobster, *Jasus edwardsii*. Thesis submitted to the Victoria University of Wellington in partial fulfilment of the requirements for the degree of Master of Science in Marine Biology. 97 pp.
- Thorson, J.T., Fonner, R., Haltuch, M.A., Ono, K., and Winker, H. (2017) Accounting for spatiotemporal variation and fisher targeting when estimating abundance from multispecies fishery data. *Canadian Journal of Fisheries and Aquatic Sciences*, 74: 1794-1807.
- Vainickis, A.A. (2010) SARDI Aquatic Sciences Information Systems Quality Assurance and Data Integrity Report 2010. SARDI Publication No. F2009/000267-2. SARDI research Report Series 497. South Australian Research and Development Institute (Aquatic Sciences) Adelaide.
- Zacharin, W. (Ed.) (1997) Management plan for the South Australian northern zone rock lobster fishery. Primary Industries and Resources South Australia, Adelaide, pp. 1-24.

5 APPENDICES

Appendix 1. SZRLF Catch, Effort and CPUE data

Table 5-1 Catch, Effort and CPUE (commercial and fishery independent survey) for the SZRLF from 1970 to 2021 by zone.

Season	Catch (t)	Effort (000's potlifts)	Commercial Legal CPUE (kg/potlift)	Survey Legal CPUE (Nr/potlift)	Commercial Undersized PRI (Nr/potlift)	Survey Undersized PRI (Nr/potlift)
1970	1544	1838	0.84			
1971	1604	1987	0.81			
1972	1949	2138	0.91			
1973	1738	2135	0.81			
1974	1212	1727	0.70			
1975	1621	2006	0.81			
1976	1374	1882	0.73			
1977	1300	1875	0.69			
1978	1309	1801	0.73			
1979	1534	1793	0.86			
1980	2126	2029	1.05			
1981	2047	2122	0.96			
1982	1844	2162	0.85			
1983	1734	2255	0.77			
1984	1537	1984	0.77			
1985	1547	2020	0.77			
1986	1458	1909	0.76			
1987	1657	2130	0.78			
1988	1407	1886	0.75			
1989	1528	1798	0.85			
1990	1563	1907	0.82			
1991	1940	2050	0.95			
1992	1754	1759	1.00			
1993	1669	1642	1.02			
1994	1721	1511	1.14		1.57	
1995	1684	1591	1.06		1.48	
1996	1640	1755	0.93		1.25	
1997	1680	1758	0.96		1.44	
1998	1713	1537	1.11		1.89	
1999	1717	1162	1.48		2.17	
2000	1716	1039	1.65		1.80	
2001	1717	910	1.89		1.81	
2002	1766	854	2.07		1.78	
2003	1896	1042	1.82		1.37	
2004	1897	1052	1.80		1.30	
2005	1889	1183	1.60		1.30	
2006	1894	1354	1.40	1.24	1.38	0.97
2007	1850	1661	1.11	1.00	0.91	0.77
2008	1407	1916	0.73	0.54	0.85	0.61
2009	1243	2050	0.61	0.51	1.11	0.82
2010	1244	1322	0.94	0.65	1.45	0.72
2011	1242	1285	0.97	0.54	1.04	0.45
2012	1234	1419	0.87	0.49	1.03	0.32
2013	1247	1253	1.00	0.43	1.17	0.30
2014	1244	1207	1.03	0.46	0.95	0.18
2015	1244	1220	1.02	0.74	0.77	0.17
2016	1238	1296	0.96	0.46	1.01	0.28
2017	1246	1022	1.22	0.75	1.31	0.43
2018	1245	841	1.48	0.96	1.35	0.39
2019	1202	758	1.59	1.19	1.76	0.47
2020	1276	775	1.64	1.26	1.58	0.48
2021	1327	767	1.72	1.51	1.54	0.50

Table 5-2 Catch, Effort and CPUE for the SZRLF from 1970 to 2021 by MFA.

	MFA 51			MFA 55			MFA 56			MFA 58		
Season	Catch (t)	Effort (000's potlifts)	CPUE (kg/potlift)	Catch (t)	Effort (000's potlifts)	CPUE (kg/potlift)	Catch (t)	Effort (000's potlifts)	CPUE (kg/potlift)	Catch (t)	Effort (000's potlifts)	CPUE (kg/potlift)
1970	215	219	0.91	443	489	0.91	486	616	0.79	377	499	0.82
1971	267	285	0.92	455	510	0.92	494	663	0.78	374	529	0.69
1972	298	305	0.98	588	600	0.97	632	672	0.97	403	543	0.72
1973	224	280	0.80	488	570	0.85	582	676	0.88	418	591	0.71
1974	166	221	0.78	331	456	0.72	405	567	0.72	309	481	0.63
1975	220	244	0.89	418	517	0.81	571	691	0.81	403	543	0.74
1976	184	226	0.80	367	473	0.77	472	676	0.71	333	484	0.67
1977	154	234	0.66	361	493	0.74	471	683	0.69	302	456	0.78
1978	177	211	0.82	390	488	0.80	452	657	0.71	279	437	0.72
1979	203	203	0.97	469	506	0.93	508	599	0.90	345	482	0.67
1980	267	215	1.22	600	508	1.21	763	745	1.04	492	553	0.86
1981	276	218	1.28	675	613	1.13	695	751	0.92	397	520	0.75
1982	252	238	1.05	674	692	0.97	543	710	0.79	362	509	0.69
1983	144	152	0.95	757	906	0.84	421	609	0.71	347	538	0.64
1984	150	156	0.95	683	793	0.86	370	538	0.69	301	463	0.63
1985	134	141	0.91	638	789	0.80	407	558	0.73	314	481	0.65
1986	104	109	0.94	656	788	0.83	368	509	0.72	299	468	0.64
1987	144	143	1.01	693	810	0.86	459	626	0.73	327	518	0.63
1988	125	122	1.02	578	712	0.81	361	516	0.70	307	504	0.61
1989	127	124	1.02	655	729	0.90	396	487	0.81	298	408	0.73
1990	144	139	1.02	695	803	0.87	405	515	0.79	305	440	0.70
1991	198	176	1.11	754	811	0.93	527	562	0.95	426	475	0.90
1992	148	120	1.21	762	730	1.04	429	463	0.93	391	431	0.91
1993	130	112	1.13	747	683	1.09	403	423	0.95	360	404	0.89
1994	85	72	1.14	705	584	1.19	532	443	1.19	372	395	0.94
1995	95	74	1.25	636	610	1.04	540	483	1.11	388	410	0.95
1996	92	78	1.17	632	656	0.95	500	539	0.92	400	471	0.85
1997	71	59	1.20	658	683	0.96	524	553	0.93	407	449	0.91
1998	60	45	1.28	647	574	1.12	550	473	1.15	435	430	1.01
1999	47	27	1.70	673	437	1.52	552	359	1.52	427	330	1.30
2000	76	42	1.79	621	342	1.79	568	333	1.68	435	312	1.41
2001	42	21	1.97	646	300	2.14	570	288	1.95	419	284	1.49
2002	30	15	2.01	661	276	2.38	570	256	2.25	453	287	1.58
2003	33	16	1.95	713	349	2.04	640	322	1.98	491	346	1.42
2004	44	18	2.42	689	326	2.11	615	322	1.91	520	371	1.40
2005	43	20	2.14	713	371	1.92	631	376	1.68	474	401	1.18
2006	57	32	1.77	765	457	1.67	606	443	1.37	434	399	1.09
2007	84	53	1.57	795	608	1.31	538	551	0.98	413	439	0.94
2008	89	80	1.11	580	699	0.83	375	617	0.61	319	489	0.65
2009	95	115	0.82	481	690	0.70	360	655	0.55	301	580	0.52
2010	45	51	0.88	456	511	0.89	437	451	0.97	300	302	1.00
2011	33	43	0.78	445	483	0.92	411	432	0.95	347	321	1.08
2012	23	38	0.62	419	489	0.86	399	497	0.80	372	379	0.98
2013	42	46	0.92	399	451	0.88	411	416	0.99	389	336	1.16
2014	25	25	0.88	412	412	1.00	384	398	0.97	421	367	1.15
2015	14	12	1.20	416	382	1.09	386	389	0.99	421	429	0.98
2016	19	14	1.42	409	380	1.08	393	411	0.96	411	486	0.85
2017	17	17	1.45	408	300	1.36	415	329	1.26	397	374	1.06
2018	9	6	1.47	447	249	1.80	405	265	1.52	383	319	1.20
2019	12	8	1.60	451	248	1.82	371	231	1.61	359	267	1.35
2020	35	23	1.53	472	275	1.70	411	258	1.60	331	205	1.61
2021	57	35	1.60	496	306	1.62	415	249	1.67	355	176	2.01

Appendix 2. Confidence intervals for the FIMS indices of abundance

Systematic sampling generally produces more precise estimates than random sampling of natural populations that tend to cluster spatially (Elsayir 2014). However, a universal analytic estimator of confidence interval for systematic samples has not yet been found. In a recent paper (McGarvey et al. 2016), 13 methods for estimating the confidence interval (via the variance of the abundance index estimate) for a systematic sample mean were evaluated. The best performer was v_8 which was adopted here to compute FIMS confidence intervals.

Sampling error variances of the systematic FIMS legal and undersized catch rate were separately estimated for September and January surveys in each year using the v_8 formula:

$$v_8 = \begin{cases} (1-f)(s^2/n) \left[1 + 2/\ln(\hat{\rho}) + 2/(\hat{\rho}^{-1} - 1) \right], & \text{if } \hat{\rho} > 0 \\ (1-f)(s^2/n), & \text{if } \hat{\rho} \leq 0 \end{cases}$$

where

$$\hat{\rho} = \frac{1}{s^2 \cdot (n-1)} \sum_{i=1}^{n-1} (x_{i+1} - \bar{x}) \cdot (x_i - \bar{x}),$$

and where n is the number the FIMS pots sampled in each September or January survey, $\{x_i; i=1, n\}$ denotes the pot-specific measurements of lobster abundance of either legal (nr/potlift) or undersized (nr/potlift) catch rate, \bar{x} is the mean of the index across all potlifts, and $\hat{\rho}$ used in the v_8 formula is the computed estimate of the correlation between neighbouring potlifts along each FIMS transect. The unbiased sample variance s^2 is computed in the usual fashion as $s^2 = \frac{1}{(n-1)} \sum_{i=1}^n (x_i - \bar{x})^2$.

To combine September and January surveys, the reported yearly index of FIMS abundance for legal and undersized lobsters ($FIMS_y$) is the (unweighted) mean of the computed indices:

$$FIMS_y = \frac{\bar{x}_{spring} + \bar{x}_{summer}}{2}.$$

To compute an overall confidence interval for this FIMS yearly index (either legal and undersize), we computed the combined yearly variance using the standard variance formula for a sum and multiplication by a constant:

$$Var(FIMS_y) = Var\left(\frac{\bar{x}_{spring,y} + \bar{x}_{summer,y}}{2}\right) = \frac{1}{2^2} [Var(\bar{x}_{spring,y}) + Var(\bar{x}_{summer,y}) + 2cov(\bar{x}_{spring,y}, \bar{x}_{summer,y})]$$

The $cov(\bar{x}_{spring,y}, \bar{x}_{summer,y})$ was computed using the standard covariance formula over all ($n_{pairs,y}$) paired pot locations that were sampled in both spring and summer FIMS surveys of each year, y :

$$cov(\bar{x}_{spring,y}, \bar{x}_{summer,y}) = \frac{1}{(n_{pairs,y})^2} \sum_{i=1}^{n_{pairs,y}} (x_{spring,y,i} - \bar{x}_{spring,y}) \cdot (x_{summer,y,i} - \bar{x}_{summer,y}).$$

The 95% confidence intervals were computed for each year y as

$$CI_{95\%,y} = 1.96 \cdot \sqrt{Var(FIMS_y)}.$$

Appendix 3. Specifications of the qR model.

Overview

The qR fishery stock assessment model operates on a yearly time-step. It is an age-based model, with a maximum age of 20+. As data input, it fits to yearly totals for commercial lobster catch in both weight and numbers landed, and conditions on yearly fishing effort. A prior value for instantaneous natural mortality rate is assumed. A vector for mean weight-at-age was estimated from yearly growth increments inferred from tag-recovery data and an assumed length for age-1 lobsters (length of legal recruits).

Data and fixed parameter inputs

Annual lobster catch in the South Australian lobster fisheries is reported in logbooks by weight (C_t^W) and by numbers (C_t^N). Effort (E_t) is reported as yearly pot lifts. The model year ($t = 1983, \dots, 1983+n_t-1$) runs from 1 June ending 31 May and n_t = the number of fishing seasons modelled from 1983 to the most recent year. Age is subscripted by a , where $a=1$ refers to lobsters reaching legal minimum length during or in the winter before a given fishing season, and the plus-group age $a=20+$ refers to the highest age group including all lobsters of age 20 years and older. The mean weights-at-age $\{w_a; a=1, 20+\}$ of harvested lobsters (McGarvey et al. 1999) are inputs. An instantaneous natural mortality rate of $M=0.1 \text{ yr}^{-1}$ is widely assumed for this species (e.g. Annala and Breen 1989) and genus (Johnston and Bergh 1993).

The population dynamics model

The qR model is effort-conditioned. A Baranov mortality submodel is assumed, where population number declines exponentially due to mortality within each yearly time step. Recruitment of lobsters to the legal stock in each year is a freely estimated parameter. Catchability is estimated separately for two time periods, before and after the imposition of quota management in 1993.

Model variables are listed in Table 5-3. The array of lobster numbers by age and year, $N_{a,t}$, varies over yearly time due to incoming recruitment, $N_{1,t} = R_t$, occurring at the start of each year t and due to outgoing mortality through each year. Natural and fishing mortality were assumed to be independent of age. Growth is expressed in the vector of mean weights at age.

Yearly cohort losses due to natural mortality and harvesting for ages 1-19 years old are written;

$$N_{a+1,t+1} = N_{a,t} \cdot \exp(-Z_t) \quad (1a)$$

where total instantaneous mortality rate $Z_t = F_t + M$. For the age 20+ 'plus group', the survival equation is written:

$$N_{20+,t+1} = [N_{19,t} + N_{20+,t}] \cdot \exp(-Z_t). \quad (1b)$$

Deaths due to harvesting were summed over age to yield predicted catches by number

(\hat{C}_t^N) and weight (\hat{C}_t^W) for fitting to data in each year of the logbook time series:

$$\hat{C}_t^N = \frac{F_t}{Z_t} \cdot \{1 - \exp(-Z_t)\} \cdot \sum_{a=1}^{20+} N_{a,t} \quad (2a)$$

$$\hat{C}_t^W = \frac{F_t}{Z_t} \cdot \{1 - \exp(-Z_t)\} \cdot \sum_{a=1}^{20+} w_a N_{a,t} \quad (2b)$$

Fishing mortality is assumed to vary in proportion to reported yearly effort, E_t , related by a catchability coefficient that is different for years before and after quota:

$$F_t = \begin{cases} q \cdot E_t, & \text{for years prior to quota management} \\ q^{\text{Quota}} \cdot E_t, & \text{for years under quota management} \end{cases} \quad (3)$$

The initial population age vector ($N_{a,1983}$) is estimated assuming a stationary age structure using the first-year estimated recruitment R_{1983} and a freely estimated F_0 :

$$\begin{cases} N_{1,1983} = R_{1983} \\ N_{2,1983} = R_{1983} \exp[-(M + F_0)] \\ N_{a+1,1983} = N_{a,1983} \exp[-(M + F_0)], \quad a = 2, 19 \\ N_{20+,1983} = N_{19,1983} \exp[-(M + F_0)] / \{1 - \exp[-(M + F_0)]\} \end{cases}.$$

Likelihood function

The negative log likelihood is written:

$$-\log L = n_t \log \sigma_N + \frac{1}{2 \cdot \sigma_N^2} \sum_{t=1983}^{1983+n_t-1} (C_t^N - \hat{C}_t^N)^2 + n_t \log \sigma_W + \frac{1}{2 \cdot \sigma_W^2} \sum_{t=1983}^{1983+n_t-1} (C_t^W - \hat{C}_t^W)^2. \quad (4)$$

Variances of the two normal likelihood components of Eq. 4 (for catches in number and in weight) were written in terms of a single estimated coefficient-of-variation parameter (σ_C) and the respective data time series means:

$$\sigma_N = \sigma_C \cdot \bar{C}^N \quad (5a)$$

$$\sigma_W = \sigma_C \cdot \bar{C}^W. \quad (5b)$$

Estimates of free parameters, q , q^{Quota} , σ_C , F_0 , and of yearly recruit numbers $\{R_t; t=1983, 1983+n_t-1\}$, were obtained by minimising the negative log-likelihood using R software environment version 3.6.2 with function “optimr (option nlminb) of package “optimx”.

The output indicator of yearly biomass was computed as the sum over all ages of population number by age times mean weight at age. For both LenMod and qR models, biomass is reported as a year-average (rather than start-year) quantity. For qR, where population declines Baranov exponentially through each yearly model time step, year-average biomass is computed by analytically integrating over the negative-exponential survival through each 12-month year, giving:

$$B_t = \sum_{a=1}^{20+} w_a N_{a,t} [1/Z_t] [1 - \exp(-Z_t)]. \quad (6)$$

Yearly egg production by female lobsters at the start of each fishing season (in spring) was computed as

$$\text{Eggs}_t = \sum_{a=1}^{20+} m_a f_a N_{a,t} / 2, \quad (7)$$

where m_a and f_a are sampled vectors of maturity and fecundity versus age (Prescott et al. 1996), and a sex ratio of one-half was assumed. The unfished level of egg production (*UEP*)

is computed by setting fishing mortality equal to zero and re-running the qR model dynamics for $2 \times n_t$ (two times the number of estimated years), taking the final-year value of this unfished equilibrium egg production to be UEP . The reference time period for the constant level of recruitment assumed for all years in this zero- F equilibrium UEP run is the mean of historical estimated recruitment over 1990-2011. The yearly percentage of unfished egg production is computed as $\%UEP_t = Eggs_t / UEP$.

Catchability

The qR catchability parameter estimates are $q = 2.6 \times 10^{-7} \text{ potlifts}^{-1}$ and $q^{\text{Quota}} = 3.8 \times 10^{-7} \text{ potlifts}^{-1}$ for pre- and post-TACC management (before 1993 and from 1993 onward), respectively.

Model adjustments for 2019/20 due to COVID-19 market disruption

A large reduction in access to the Chinese market for South Australian lobster exports occurred when the COVID-19 pandemic response was implemented, starting after 22 January 2020. This induced changes in fishing practices, and lower levels of fishing activity. To prevent this from biasing qR model estimates, only catch rates reported up to 22 January were used as the 2019/20 index of abundance.

To remove the impact of disrupted fishing on the inputs to the qR model, a 'COVID correction' was applied to effectively remove the reported post-22-January 2020 catch rate data from the 2019/20 qR input data set. The qR model consists of three data components for season 2019: (1) Catch in weight taken as given over the full 8-month fishing season; (2) Effort calculated via COVID-corrected catch rates as described below and; (3) Catch in number which was not corrected after analysis showed that removing the post-22-January data had negligible impact on mean weight. Using a linear model, catch rate in the SZ was corrected by +1%, meaning the raw reported value was estimated to be about 1% lower than it would have been had there been no COVID disruption.

The four steps taken to correct catch rates and calculate the yearly effort qR input for the 2019/20 season (using only catch rate information up to 22 January) are detailed as follows. First, two sets of catch and effort data were created, one including the regular non-winter period of data as usually aggregated for qR model fitting (October-May), and a second that includes only catch and effort up to 22 January 2020. Second, a linear statistical model was fitted relating catch rate that includes data only up to 22 January to the data for the regular ('Reg') season catch rate:

$$CwPUEReg[iy] \sim aCwPUEReg22Jan + bCwPUEReg22Jan * CwPUE22Jan[iy]. \text{ (A3.1)}$$

This linear model was fitted to data from seasons 2003-2018. The 2019/20 season was naturally excluded since the estimated parameters will be used to rescale catch rate and effort for that latest season. The two estimated parameters, the intercept ($aCwPUEReg22Jan$) and coefficient ($bCwPUEReg22Jan$) in this linear relationship, quantify the expected regular Oct-May season catch rate given catch rate only up to 22 January in a typical season. We chose 2003 onward as the past seasons to be fitted given that average recruitment levels decreased around 2003. The 2010 SZ season was also excluded due to the fact that October was closed. Third, we computed what the regular season catch rate was expected to be for 2019/20 given the catch rate observed up to 22 January:

$$CwPUECorReg[2019] = aCwPUEReg22Jan + bCwPUEReg22Jan * CwPUE22Jan[2019]. \text{ (A3.2)}$$

Finally, we computed the COVID corrected measure of yearly effort for 2019/20 to be taken as input to the qR model:

$$ECOVIDReg[2019] = CwAllMonths[2019] / CwPUECorReg[2019]. \text{ (A3.3)}$$

where $CwAllMonths$ is the yearly catch weight data over the full 12 months.

The resulting COVID-corrected catch rate is $CwPUECorReg[2019] = 1.604$. The raw yearly catch rate in 2019 was 1.586. The COVID-corrected catch rate was thus 1.17% higher. Thus we estimate a correction of about 1% higher for expected full season catch rate inferred when only data up to 22 January 2020 are used compared to the nominal (raw) 2019/20 SZ catch rate. The higher COVID-corrected catch rate value was used to compute yearly effort in qR model estimates for 2019/20.

This correction procedure was also run for mean weight in 2019. The resulting corrected mean weight differed negligibly (by only 0.1%) from SZ nominal, and so no correction to mean weight or qR catch in number was needed or applied.

Incorporating recreational catch

The proportion of catch taken by recreational sector in the SZ is estimated to vary around 3%. Previously, the qR model used only the more reliable commercial catch and effort data. For this assessment and in future, all qR data inputs, yearly totals for catch in weight, catch in number and effort, are scaled upward by the same yearly varying proportion of recreational catch-in-weight used in LenMod.

Table 5-3 Variables of the qR model dynamics and likelihood assessment estimator.

Model Variable	Description
a	subscript for age, 1 to 20+ (the last age group representing ages 20 years and older)
n_t	number of fishing seasons modelled
t	subscript for yearly fishing season, 1983 to 1983+ n_t -1
$N_{a,t}$	number of lobsters of age a , at the start of year t
R_t	estimated number of recruits at start of year t
F_t	instantaneous fishing mortality rate in year t
q	estimated catchability coefficient for pre-quota (pre-1993) years
q^{Quota}	estimated catchability coefficient for years under quota (1993+)
\hat{C}_t^N	model numbers of lobsters caught in year t
\hat{C}_t^W	model weight of catch in year t
N_t	total population number at start of year t
B_t	biomass of lobsters averaged across year t
$Eggs_t$	eggs produced by female lobsters at start of year t
σ_N	sigma of yearly normal likelihood residuals about model-predicted \hat{C}_t^N
σ_W	sigma of yearly normal likelihood residuals for data about model-predicted \hat{C}_t^W
σ_C	estimated coefficient of variation relating σ_N and σ_W to data means \bar{C}^N and \bar{C}^W
F_0	estimated fishing mortality used to generate the first-year vector of numbers at age
\hat{C}_t^N	model number of lobsters caught in year t
\hat{C}_t^W	model weight of catch in year t
N_t	total population number at start of year t
B_t	biomass of lobsters averaged across year t
$Eggs_t$	eggs produced by female lobsters at start of year t
UEP	unfished egg production, based on average recruitment 1990-2011
$\%UEP_t$	percentage of unfished egg production in year t

Appendix 4. Specifications of the length-structured model (LenMod).

Overview

LenMod is a population dynamics model that operates on a fishing season defined over, for the Southern Zone Rock Lobster Fishery, $T = 10$ time-steps (months), starting with an assumed opening of the fishing season in September ($i=1$) to May ($i=9$), with a multi-month June-August ($i=10$) time step covering each winter season. Note that all assessments prior to the 2020/21 season, the first model month was assumed to be October. The duration of the i^{th} time-step ($i=1, \dots, T$) in units of years is denoted t_i . Lobster size-classes are in 4 mm bins, the lowest length bin defined as 82.5-86.5 mm CL, with 29 bins for males and 21 for females. The model population array, $N_{y,i,l}^s$, is the number of lobsters by length bin (l), sex (s), fishing season (y ; hereafter referred to as year), and month (i).

The population dynamics model

Basic dynamics

The equation that specifies $N_{y,i,l}^s$ takes account of natural mortality M (instantaneous yearly rate), fishing mortality, growth, and settlement under the assumption that harvest occurs before growth and settlement:

$$N_{y,i+1,l}^s = \sum_{l'} X_{l',l,i}^s N_{y,i,l'}^s e^{-Mt_i} \{1 - \tilde{H}_{y,i,l'}^s\} + \Omega_i^s \Phi_l^s R_y \quad (1)$$

where

$X_{l',l,i}^s$ is the fraction of the animals of sex s in size-class l' that grow into size-class l during time-step i ;

Ω_i^s is the fraction of the settlement that occurs to sex s during time-step i ($\sum_s \sum_i \Omega_i^s = 1$);

Φ_l^s is the proportion of the settlement of animals of sex s that occurs to size-class l ;

$\tilde{H}_{y,i,l'}^s$ is the exploitation rate on animals of sex s in size-class l' at the start of time-step i of year y over all fleets; and

R_y is the settlement of animals during year y :

$$R_y = \bar{R} e^{\varepsilon_y - (\sigma_{R,y})^2/2} \quad (2)$$

where \bar{R} is mean settlement, ε_y is the “settlement residual” for year y , $\sigma_{R,y}$ is the standard deviation of the random fluctuations in settlement for year y :

$$\sigma_{R,y}^2 = \begin{cases} \tilde{\sigma}_R^2 \tilde{\tau}^{(y_{\text{start}} - y)} & \text{if } y \leq y_{\text{start}} \\ \tilde{\sigma}_R^2 & \text{otherwise} \end{cases} \quad (3)$$

$\tilde{\sigma}_R$ is the extent of variation in settlement for years after y_{start} , and $\tilde{\tau}$ determines the extent to which $\sigma_{R,y}$ changes with time ($\tilde{\tau} < 1$ means that the settlement will be closer to the mean settlement for the years before y_{start}).

$B_y^{\text{AvgTotLeg}}$ is the reported year-average legal-sized biomass during year y , averaging across T months, using start-month population numbers (after half-month natural survival), where W_l^s is the weight of a lobster of size l and sex s :

$$B_y^{\text{AvgTotLeg}} = \frac{1}{T} \sum_{i=1}^T \sum_s \sum_{l \geq LML} W_l^s e^{-M_{ti}/2} N_{y,i,l}^s. \quad (4)$$

Reported yearly exploitation rate is defined as the sum of commercial landed catch in weight data across the T months divided by the year-average legal-sized biomass.

Egg production is given by the following equation for the case in which spawning is assumed to occur at the start of time-step i_m of year y :

$$\text{Eggs}_y = \sum_l m_l f_l N_{y,i_s,l}^f \quad (5)$$

where m_l and f_l are previously estimated vectors of maturity and fecundity versus length for females in size-class l , i_s is the time-step in which spawning occurs ($i_s = \text{month } 2$), and $N_{y,i_m,l}^f$ is the total number of females. The unfished level of egg production is computed by setting all estimated parameters to their values (except recruitment) from the stock assessment run, setting catches to zero, and re-running LenMod for 40 years, sufficient to achieve equilibrium. Recruitment for this zero-catch run is set to the average over the years 1990-2011. The % of

unfished egg production in each year is computed as the ratio of $Eggs_y$ divided by the final zero-catch equilibrium level of egg production.

Catches

$C_{y,i}^f$ which is the landed catch in weight data by fleet f during time-step i of year y . In addition to landed catch, commercial data includes information on spawning lobsters and those brought up dead in the pots, while six surveys (1998, 2001, 2004, 2007, 2013 and 2021) are used as the basis to estimate catches for the recreational fleets. $C_{y,i}^f$ is used in defining the fully-selected exploitation rate for fleet f during time-step i of year y , $F_{y,i}^f$, is calculated as follows:

$$F_{y,i}^f = \frac{(1 + d_{y,i}^f) C_{y,i}^f}{\sum_l \sum_s \tilde{S}_{y,i,l}^{s,f} (1 - \tilde{p}_{i,l}^s) V_i^s W_l^s N_{y,i,l}^s e^{-Mt_i/2}} \quad (6)$$

where

$d_{y,i}^f$ is the ratio of the discarded dead catch to the legal-size catch for fleet f (only for commercial fleets, and is 0 for recreational);

V_i^s is the relative sex vulnerability, determined separately for each month i , which, if estimated, is either being fixed at a value of 1 for males ($V_i^{males} = 1$) and estimated for females, or fixed at a value of 1 for females ($V_i^{females} = 1$) and estimated for males; or fixed to 1 for both sexes;

$\tilde{p}_{i,l}^s$ is the proportion of mature animals of sex s in length-class l which are returned live during time-step i because they are spawning (0 for males); and

$\tilde{S}_{y,i,l}^s$ is the vulnerability by length for the gear used on animals of sex s in size-class l during time-step i of year y incorporates the legal minimum size as:

$$\tilde{S}_{y,i,l}^s = \begin{cases} 0 & \text{if } L_l^s + \Delta L_l^s \leq \text{LML}_y \\ S_{y,i,l}^s & \text{if } L_l^s \geq \text{LML}_y \\ S_{y,i,l}^s (L_l^s + \Delta L_l^s - \text{LML}_y) / \Delta L_l^s & \text{otherwise} \end{cases} \quad (7)$$

where $\tilde{S}_{y,i,l}^{s,f} = \tilde{S}_{y,i,l}^s$ as it is assumed that at any time when recreational fishing takes place the same gear is used as for the commercial fishery. L_l^s is the lower limit of size-class l for sex s , ΔL_l^s is the width of a size-class l (4 mm) for sex s , LML_y is the legal minimum size during

year y , $S_{y,i,l}^s$ is the vulnerability of the gear used on animals of sex s in size-class l . (There were no changes in LML_y , which is 98.5 mm carapace length, over the whole time series for the Southern Zone Rock Lobster Fishery.)

$F_{y,i}^f$ is used to define $\tilde{H}_{y,i,l}^s$ as follows:

$$\tilde{H}_{y,i,l}^s = \sum_f \tilde{S}_{y,i,l}^s (1 - \tilde{p}_{i,l}^s) V_i^s F_{y,i}^f \quad (8)$$

Catchability

Catchability is estimated separately by month (i) and for two time periods, before (1983-1992) and under (1993+) TACC management. Details on the definition of catchability ($q_{Q,i}^{Comm}$) are given in this Appendix.

Table 5-4 Catchability estimates from LenMod for the SZRLF.

Month of fishing season (i)	$q_{Q-0,i}^{Comm}$ (1983-1992)	$q_{Q-1,i}^{Comm}$ (1993-2021)
September	N/A	N/A
October	2.7×10^{-7}	3.5×10^{-7}
November	2.6×10^{-7}	3.8×10^{-7}
December	3.1×10^{-7}	4.5×10^{-7}
January	4.4×10^{-7}	6.9×10^{-7}
February	4.7×10^{-7}	6.4×10^{-7}
March	4.6×10^{-7}	6.5×10^{-7}
April	4.7×10^{-7}	6.4×10^{-7}
May	N/A	1.9×10^{-6}

Initial conditions

It is impossible to project this model from unexploited equilibrium owing to a lack of historical catch records for the entire period of exploitation. Instead, it is assumed that the population was in equilibrium with respect to the average catch over the first five years for which catches are available in year $y_{start} - 20$. This approach to specifying the initial state of the stock differs

from that traditionally adopted for assessments of rock lobster off Tasmania and Victoria (Punt and Kennedy 1997; Hobday and Punt 2001) in that no attempt is made to estimate an initial exploitation rate. The settlements for years $y_{start} - 20$ to $y_{start} - 1$ are treated as estimable so that the model is not in equilibrium at the start of year y_{start} .

The objective function

The objective function summarises the information collected from the fishery and contains contributions from four data sources:

- a) Commercial catch rates and independent catch rates,
- b) length-sex frequency data from sampling of commercial pot lifts, and
- c) commercial catches in number.

Catch-rate data

The contribution of the catch-rate data for the commercial fishery to the likelihood function is given by:

$$L_{1.a} = \prod_y \prod_i \frac{1}{I_{y,i}^{Comm} \sqrt{2\pi} \sigma_{q,Q,i}^{Comb}} \exp \left(- \frac{(\ln I_{y,i}^{Comm} - \ln(q_{Q,i}^{Comm} B_{y,i}^{e,Comm}))^2}{2(\sigma_{q,Q,i}^{Comb})^2} \right) \quad (9.a)$$

while the contribution of fishery-independent monitoring survey (FIMS) index data to the likelihood function is given by

$$L_{1.b} = \prod_y \prod_i \frac{1}{K_{y,i}^{FIMS} \sqrt{2\pi} \sigma_{q,Q,i}^{Comb}} \exp \left(- \frac{(\ln K_{y,i}^{FIMS} - \ln(\tilde{q}_{Q,i}^{FIMS} q_{Q,i}^{Comm} B_{y,i}^{e,Comm}))^2}{2(\sigma_{q,Q,i}^{Comb})^2} \right) \quad (9.b)$$

where

$q_{Q,i}^{Comm}$ is the commercial catchability coefficient which varies by time-step (month) i and for each of two periods of years namely before (1983-1992) and after (1993+) inception of TACC (differentiated by index $\{Q = 0, 1\}$, 0 for years prior to quota, and 1 for years under quota);

$I_{y,i}^{Comm}$ is the catch-rate index for the commercial fleet for year y and time-step i ;

$\sigma_{q,Q,i}^{Comm}$ is the standard deviation of the observation error for the commercial fleet for time-step i and for each of two periods of years indexed by Q for before and after inception of TACC;

\tilde{q}^{FIMS} is the FIMS catchability coefficient; and

$K_{y,i}^{FIMS}$ is the FIMS catch-rate index for time-step i of year y .

FIMS catch rates are available since 2005 for the Southern Zone Rock Lobster Fishery for between two or three months surveyed each year, and are derived from sampling pots spaced evenly across transects which span a larger spatial region than that of the concentrated fishing grounds, where catchability by month is assumed to be the same as that for the commercial fishery. The maximum likelihood estimates for $q_{Q,i}^{Comm}$ and $\sigma_{q,Q,i}^{Comb}$ were obtained analytically, while the value for \tilde{q}^{FIMS} was estimated as part of the non-linear search procedure.

$B_{y,i}^{e,Comm}$ is the exploitable biomass available to the commercial fishery (and recreational fishery) midway into time-step i of year y :

$$B_{y,i}^{e,Comm} = \sum_s \sum_l V_i^s (1 - \tilde{p}_{i,l}^s) \tilde{S}_{y,i,l}^s W_l^s e^{-Mt_i/2} N_{y,i,l}^s (1 - \tilde{H}_{y,i,l}^s / 2) \quad (10)$$

Length-frequency data

Length and sex frequency data are available from a sampling program which has been conducted since 1991. This program involves voluntary reporting on the contents of pot lifts by some commercial fishers. The observed fraction, during time-step i of year y by the commercial fishery, of the catch (in number) of animals of sex s in size-class l (including undersize) is denoted $\rho_{y,i,l}^{s,Comm}$. The model-estimate of this quantity, $\hat{\rho}_{y,i,l}^{s,Comm}$, takes account of the vulnerability of the gear and the numbers in each size-class and sex:

$$\hat{\rho}_{y,i,l}^{s,Comm} = \tilde{S}_{y,i,l}^s V_i^s (1 - \tilde{p}_{i,l}^s) N_{y,i,l}^s / \sum_{s'} \sum_{l'} \tilde{S}_{y,i,l'}^{s'} V_i^{s'} (1 - \tilde{p}_{i,l'}^{s'}) N_{y,i,l'}^{s'} \quad (11.a)$$

The observed value of $\rho_{y,i,l}^{s,Comm}$ is assumed to be multinomially distributed, giving the length-sex frequency likelihood function (ignoring multiplicative constants):

$$L_2 = \prod_y \prod_i \prod_l \prod_s (\hat{\rho}_{y,i,l}^{s,\text{Comm}})^{n_{y,i,l}^{s,\text{Comm}} \omega} \quad (11.b)$$

where $n_{y,i,l}^{s,\text{Comm}}$ is the observed number of lobsters in the sampling program in time-step i of year y of sex s and size-class l , and ω is a down-weighting constant factor to reduce influence of this data relative to the catch-effort data sets (since catch sampling is not random and selectivity is not stationary). Undersize length-sex frequencies are fit as part of the full length-sex frequency data from the sampling program, with the model catch number predictions being proportional to:

$$S_{y,i,l}^s V_i^s (1 - \tilde{p}_{i,l}^s) N_{y,i,l}^s e^{-M_i/2} \quad (12.a)$$

The length-sex frequencies for spawners are also assumed to be multinomial samples, except the model catch number predictions being proportional to:

$$S_{y,i,l}^s V_i^s \tilde{p}_{i,l}^s N_{y,i,l}^s e^{-M_i/2} \quad (12.b)$$

Catch-in-number

The commercial catches in number, $C_{y,i}^N$, are assumed to be lognormally distributed. The contribution of these data to the likelihood function is therefore given by:

$$L_3 = \prod_f \prod_y \prod_i \frac{1}{C_{y,i}^N \sqrt{2\pi\sigma_N}} \exp\left(-\frac{(\ln C_{y,i}^N - \ln \hat{C}_{y,i}^{N,\text{Comm}})^2}{2\sigma_N^2}\right) \quad (13)$$

where $\hat{C}_{y,i}^N = \sum_s \sum_l V_i^s \tilde{S}_{y,i,l}^s (1 - \tilde{p}_{i,l}^s) N_{y,i,l}^s e^{-M_i/2} F_{y,i}^{\text{Comm}}$ and σ_N^{Comm} is the standard deviation of the observation error in catch numbers, assumed to apply over all time. The spawner discards are also fitted under the assumption that they are lognormally distributed.

Parameter estimation

Table 5-5 lists the parameters of the population dynamics model and the objective function, and highlights those parameters assumed to be known exactly and those parameters whose values are estimated by fitting the model to the data. Vulnerability-at-length for specified combinations of months is estimated, separately for each sex, by a logistic function of length. Female spawner fractions are based on auxiliary information.

A constraint is placed on the settlement residuals to stabilise the estimation and prevent confounding with mean recruitment. The following term was included in the objective function:

$$P = 0.5 \sum_y (\varepsilon_y)^2 / (\sigma_{R,y}^2). \quad (14)$$

Estimates of all parameters were obtained by minimising the negative log-likelihood using ADMB (Fournier et al. 2012).

Table 5-5 Parameters of the length-structured model (LenMod) and their sources for the Southern Zone Rock Lobster Fishery.

Parameter	Description	Value	Sources
ε_y	The settlement residuals for year y	Estimated	
$\ln(\bar{R})$	Mean settlement	Estimated	
$\tilde{\sigma}_R$	The extent of variation in settlement for years after y_{start}	0.5	Assumed
$\tilde{\tau}$	The extent to which $\sigma_{R,y}$ changes with time	0.8	Assumed
$X_{l',l,i}^s$	Growth transition matrix	Matrices by sex for months 4 and 9.	Estimated using method of McGarvey and Feenstra (2001).
M	Natural mortality	0.1 yr^{-1}	Conventional assumption
V_i^s	Relative vulnerability by sex by time-step	Fixed at 1 for all months and both sexes.	
$S_{y,i,l}^s$	Vulnerability of the gear by sex, size-class, time-step, and year.	Estimated as logistic functions of length per sex, shared across years, but separately for Sep-Dec, Jan-March, April, and May.	
$\tilde{p}_{i,l}^s$	Proportion of mature spawning animals by sex, size-class and time-step		Estimated externally
Ω_i^s	Fraction of the settlement by time-step and sex	Estimated	
Φ_l^s	Proportion of the settlement of animals by sex and size-class	First six length bins: males = 0.35, 0.2, 0.15, 0.15, 0.1, 0.05; females = 0.45, 0.25, 0.15, 0.1, 0.05, 0	Assumed
Q_l	Egg production as a function of size		Estimated externally
W_l^s	Mass as a function of size and sex	Power function of length	Estimated externally

i_m	The time-step in which spawning occurs	2	
$q_{Q,i}^{Comm}, \tilde{q}^{FIMS}$	Catchability for the commercial fleet and FIMS by time-step i and for each of two periods of years namely before and after inception of TACC	Estimated	
$\sigma_{q,Q,i}^{Comb}$	Standard deviation of the observation errors for time-step i and for each of two periods of years namely before and after inception of TACC for the commercial fleet, and FIMS surveys combined after TACC inception.	Estimated	
σ_N^{Comm}	Standard deviation of the observation error in commercial catch in numbers	Estimated	
ω	Down-weighting factor for length-sex data	0.0125	Assumed

Appendix 5. Model fits

qR model

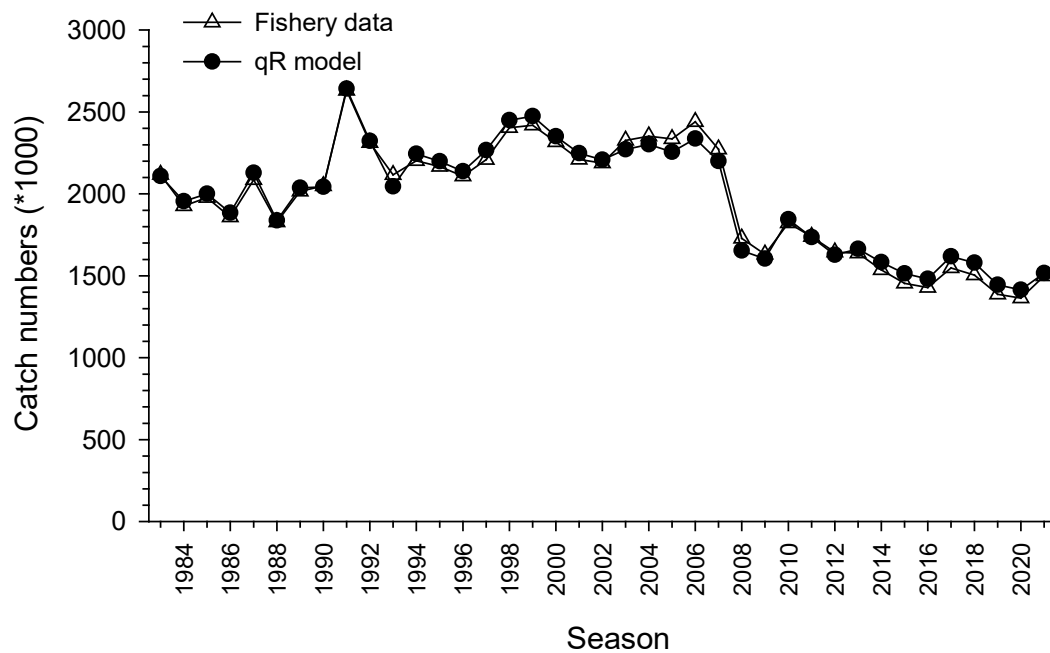


Figure 5-1 Fit of the qR model to catch in number of lobsters landed for the SZRLF, based on annual logbook catch totals from the fishery.

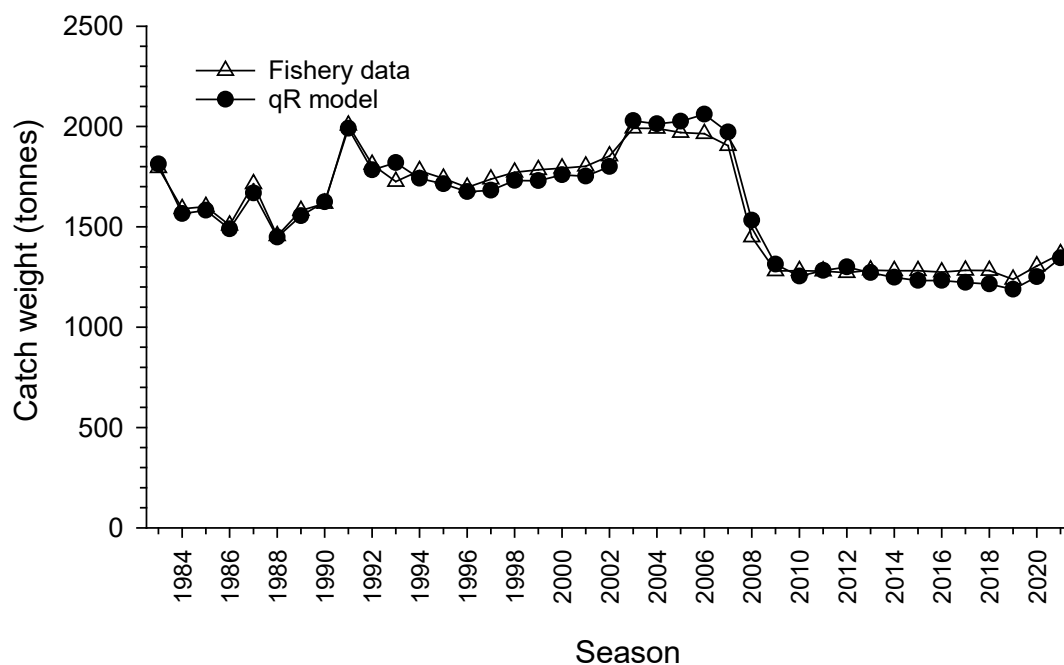


Figure 5-2 Fit of the qR model to catch in weight for the SZRLF, based on annual logbooks catch totals from the fishery.

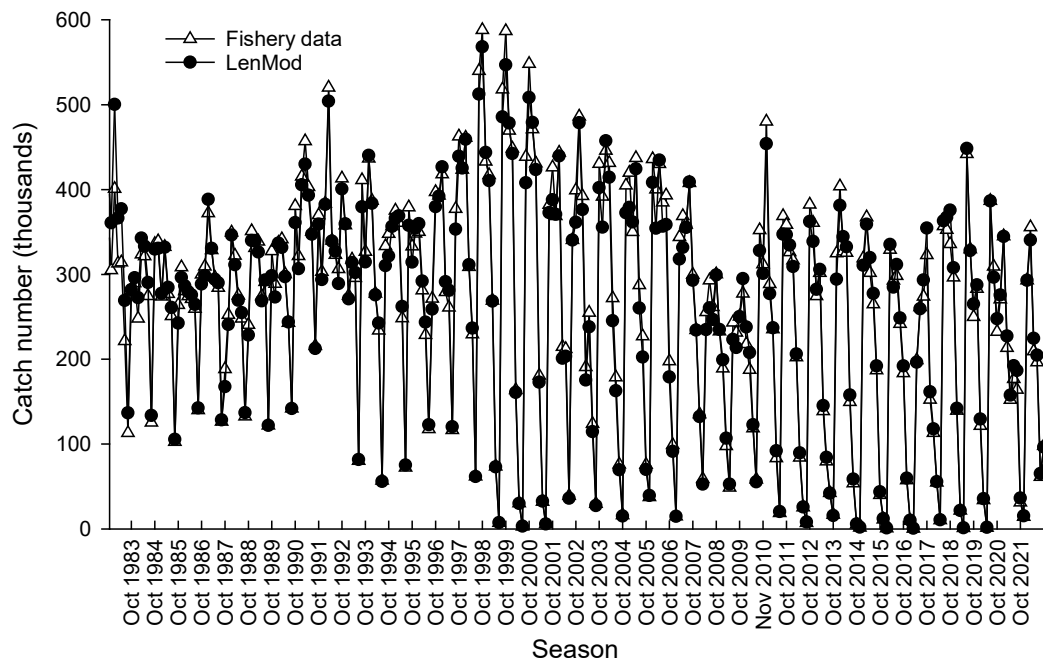
LenMod

Figure 5-3 Fit of the LenMod model to monthly catch in number (Cn) for the SZRLF, based on logbook catch totals from the fishery. (Note: October closed to fishing in 2010).

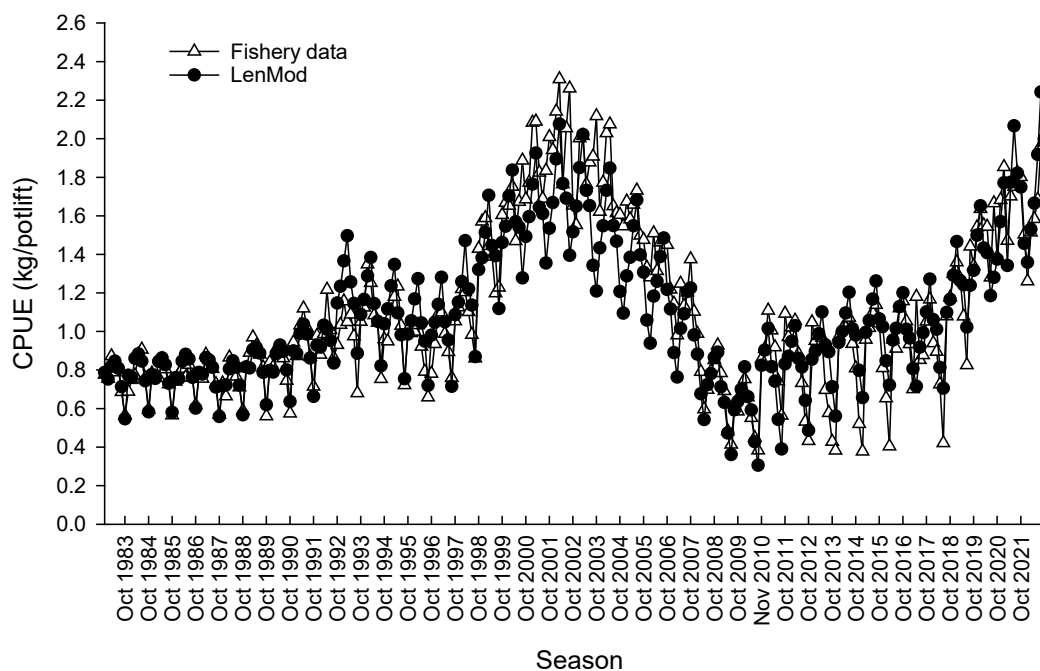


Figure 5-4 Fit of the LenMod model to monthly catch per unit effort (CPUE) for the SZRLF, based on logbook catch totals from the fishery (Note: October closed to fishing in 2010).

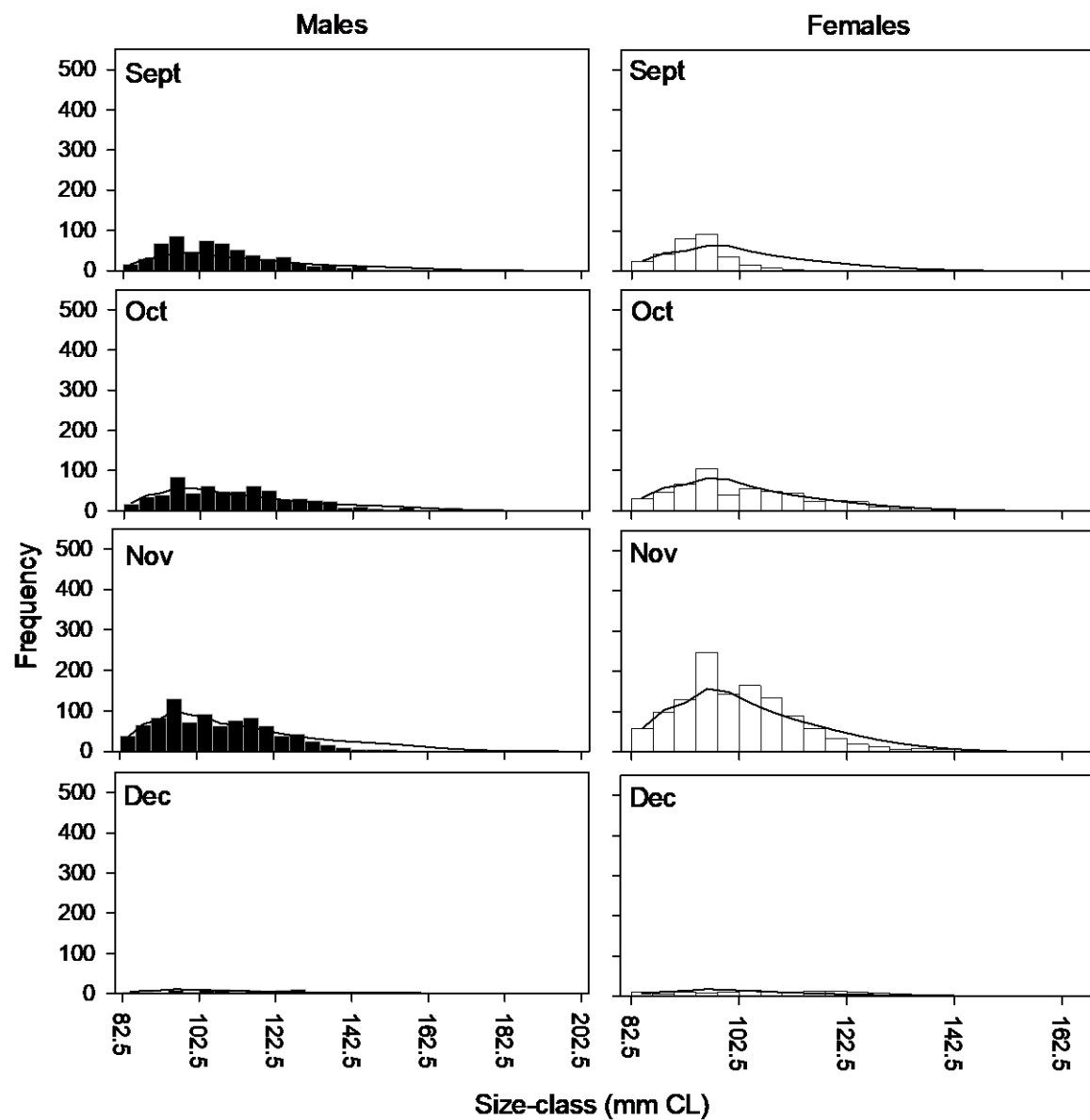


Figure 5-5 Fits of LenMod model (black line) proportions by length bin to commercial length frequency data for both males and females taken during the 2021 season in the SZRLF.