

Electronic identification (eID) tag tips

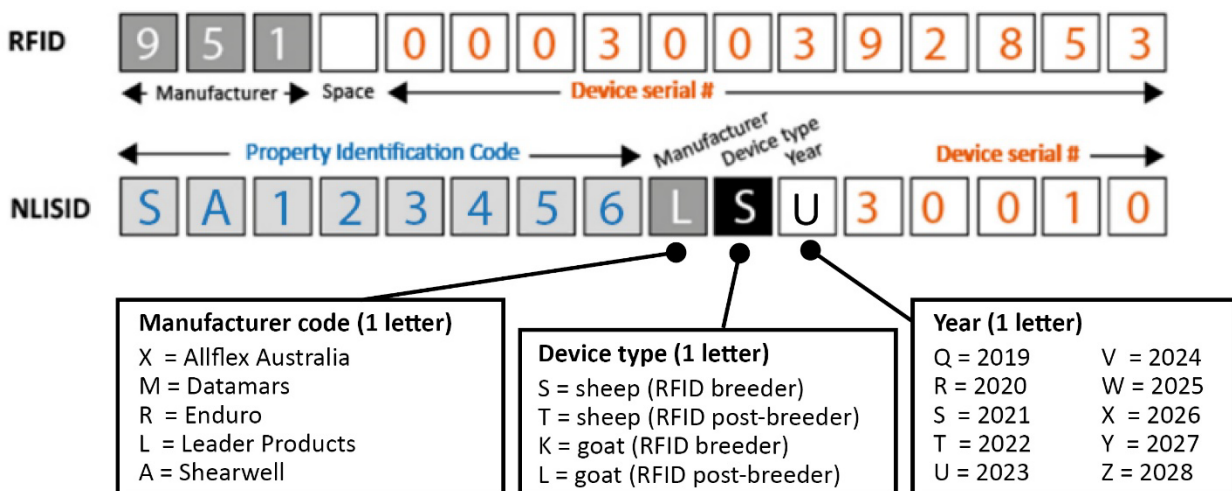
Transitioning from visual tags to eID for sheep and goats

South Australia is replacing its mob-based visual tag traceability system with eID. All sheep and farmed goats born on or after 1 January 2025 will need to be identified with a National Livestock Identification System (NLIS) accredited eID device before leaving their property of birth.

Tag tip 1: NLIS accredited eID tags have two unique numbers

1. **Radio frequency identification (RFID) number** – a non-visible 16-digit electronic microchip number that can be scanned with a handheld wand or panel reader.
2. **NLIS number** – a visual number printed on the outside of the tag representing the property identification code (PIC) of the property it was issued to, a reference to the tag manufacturer, the device type (breeder or post breeder) and species, the year of manufacture, and a device serial number.

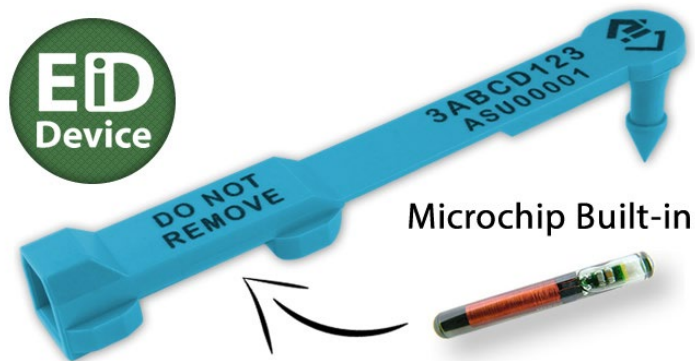
Example: Sky blue 'breeder' eID tag for sheep manufactured by Leader Products and printed for this PIC in 2023



Tag tip 2: There are two types of eID tags

- Breeder tags are used to permanently identify animals before they leave their property of birth.
- Post breeder tags are used to permanently identify animals introduced onto a property that have not been eID tagged or have lost their original tag.
- Animals should only be tagged with one eID tag.
- Once an animal has been tagged, it must remain with the animal for life.
- eID tags can be purchased the same way as visual tags, through a rural reseller or directly from some tag manufacturers – scan the QR code to see the list of NLIS accredited tags.





Tag tip 3: eID tags come in different colours

- NLIS accredited breeder eID tags use a year of birth (YOB) colour system.
- The YOB colour system is voluntary in South Australia and the default colour is yellow.
- Post breeder eID tags are pink.
- If you buy in sheep or goats, you will need a supply of pink post breeder eID tags to use as replacements for missing tags.

Year	Tag Colour	Year	Tag Colour
2016	Black	2024	Black
2017	White	2025	White
2018	Orange	2026	Orange
2019	Light green	2027	Light green
2020	Purple	2028	Purple
2021	Yellow	2029	Yellow
2022	Red	2030	Red
2023	Sky blue	2031	Sky blue

Any year Post-breeder tags must be pink

Tag tip 4: eID tags are species specific

- eID tags can only be used on the type of livestock they are purchased for - the species is recorded against each identification number on the NLIS database.

Tag tip 5: eID numbers are linked on the NLIS database

- RFID and NLIS numbers are linked together on the NLIS database. Either number can be used to record a movement.
- eID tag numbers are automatically registered to your PIC on the NLIS database by the manufacturer when they are purchased.
- You do not need to scan or transfer animals when you apply the tags as they are already registered to your PIC.
- To help keep track of your eID tags you need an NLIS account at www.nlis.com.au

Scan the QR code or visit www.pir.sa.gov.au/eID for more information about South Australia's transition to eID for sheep and farmed goats.

