

2021/22

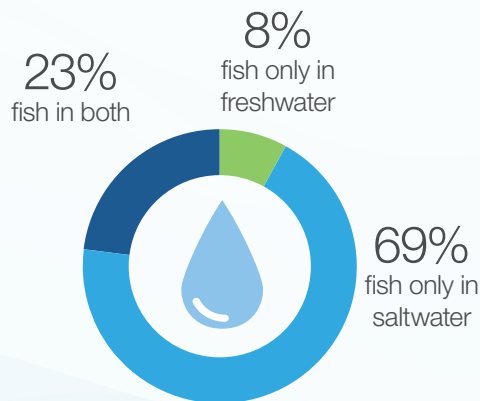
Survey of recreational fishing in South Australia

The South Australian Research and Development Institute (SARDI) in collaboration with the University of Tasmania conducted a survey of over 5,000 households to see if they fished recreationally. Of these, 1,000 households gave detailed information about their fishing activity over the following 12-month period, while on-site sampling was undertaken at key fishing locations to estimate fish size. This was the fourth large-scale survey conducted since 2000.

The survey findings are used to understand the use of South Australia's community-shared fish stocks, assess the sustainability of South Australia's fishing resources and give fishery managers the information they need to make sure there are healthy fish stocks into the future.

This is a snapshot of the 2021/22 survey results.

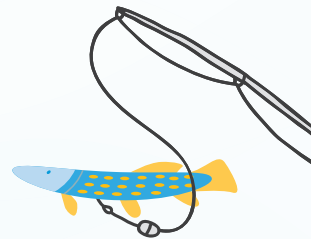
The fishers



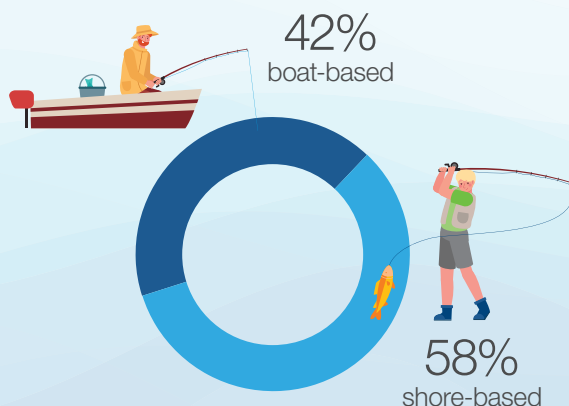
356,708
total number of fishers



They fish an average of
4 days per year



What's the catch?



King George Whiting

305 tonnes



Blue Swimmer Crab

251 tonnes



Southern Calamari

219 tonnes



Carp

99 tonnes



Australian Salmon

82 tonnes

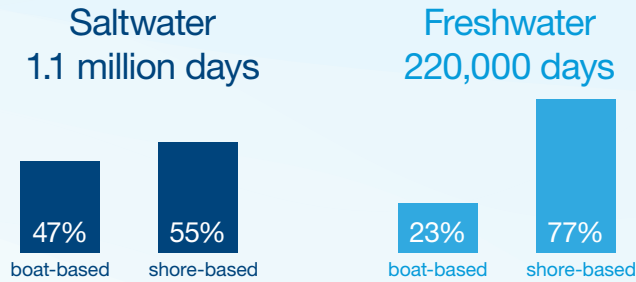


Southern Rock Lobster

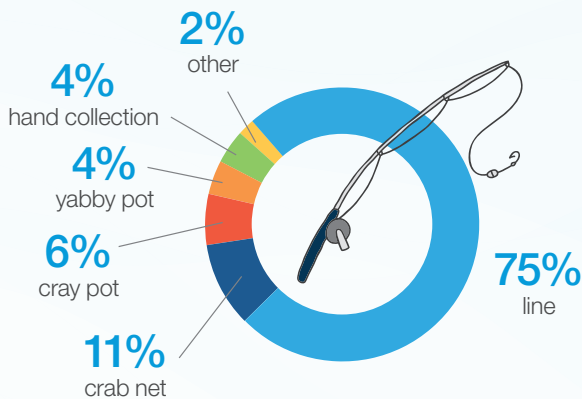
72 tonnes

*retained catch of key species

How and where?

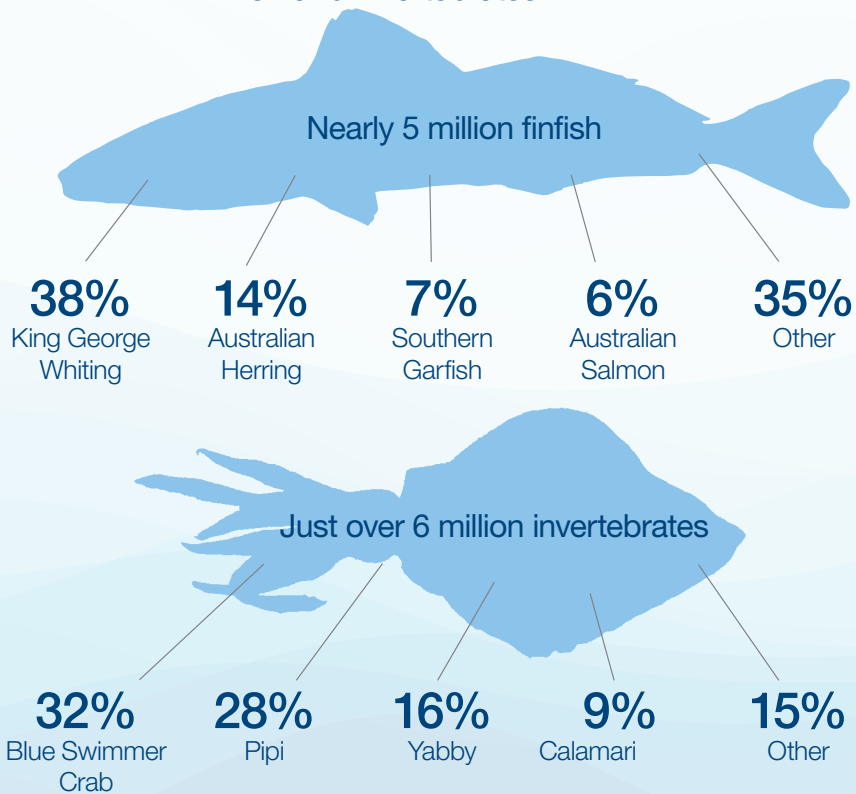


1.3 million days of fishing effort by

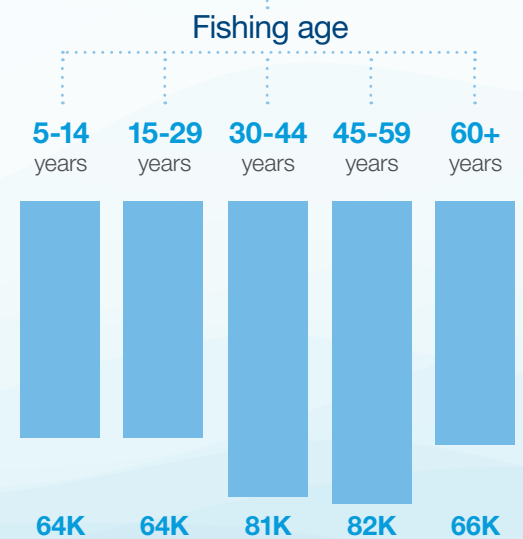
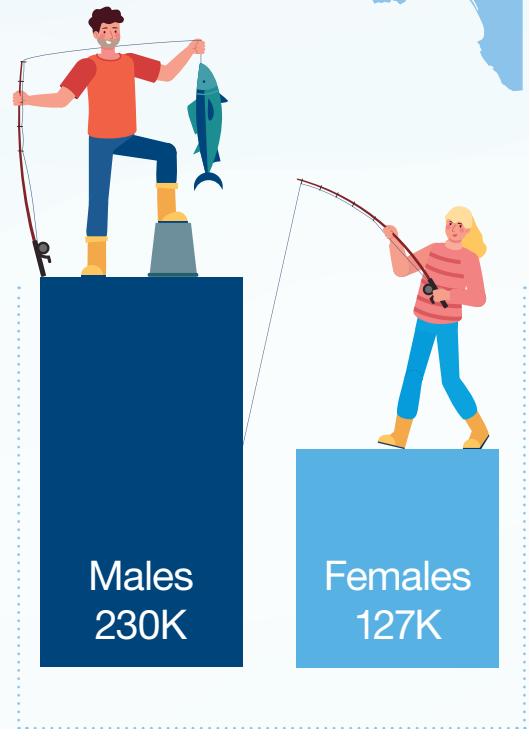
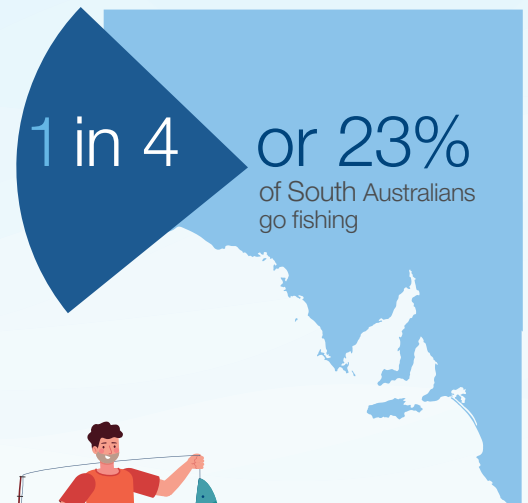


Catch by number

90+ species of fish and invertebrates



Who is fishing?



The full report is available here
pir.sa.gov.au/fishing-survey