

---

**ANNUAL REPORT**

**of**

**THE**

**SOUTH AUSTRALIAN**

**LANDCARE COMMITTEE**

---



1994





# CONTENTS

	Page
INTRODUCTION .....	5
THE SOUTH AUSTRALIAN LANDCARE COMMITTEE (SALC) .....	5
THE 1994 LANDCARE FORUM .....	6
Results of the Forum .....	7
STRATEGY FOR THE FUTURE OF LANDCARE IN SOUTH AUSTRALIA .....	8
The South Australian Landcare Committee (SALC) .....	8
Membership .....	8
LANDCARE SUBCOMMITTEE REPORTS .....	9
Community Education .....	9
Communications and Promotions .....	10
MAJOR ACTIVITIES UNDERTAKEN BY THE LANDCARE UNIT .....	11
THE NATIONAL LANDCARE AWARDS.....	13
RELATIONSHIP WITH LANDCARE AUSTRALIA LTD .....	13
THE LANDCARE FOUNDATION - SOUTH AUSTRALIAN COMMITTEE .....	14
THE KIDS FOR LANDCARE OUTDOOR CLASSROOM .....	16
THE FUTURE .....	17
APPENDIX: - Background Notes .....	18



## INTRODUCTION

At the 1994 Australian Landcare Conference "Landcare in the Balance", Ms Penny Wensley, Australian Ambassador for the Environment told 400 assembled delegates that "Landcare has now assumed an importance beyond Australia."

"It has attracted considerable interest internationally as one of the world's most comprehensive, practical and advanced long-term programs of action to implement sustainable resource use practices on a community-wide basis. As a program based on the principle of partnerships with governments, landholders and community groups working together to establish goals and priorities and specific proposals for action, the Australian Landcare concept has been adopted by the international community."

She went on to say that frankly she found it inspiring "that ordinary men and women in Australian rural communities, through the medium of international diplomatic negotiations, have given

the benefit of their experience to ordinary men and women in rural communities in countries remote from Australia afflicted by drought and desertification."

Ms Wensley hopes that when we in Australia consider the future of Landcare, we will see it in a wider perspective than perhaps we usually do. We will realise that by doing so we will be part of wider efforts to achieve not just a secure and prosperous future for Australia, but to create the conditions for a peaceful and prosperous world.

Ms Wensley's address was acclaimed by all delegates at the conference. In this fifth year of the Australian Landcare Program it is encouraging to hear that in spite of economic constraints, mouse plagues, locusts, and drought, the dedicated efforts of landcarers are being recognised not only within their own State and country, but also globally.

## THE SOUTH AUSTRALIAN LANDCARE COMMITTEE (SALC)

(Formerly The State Management Committee for the Decade of Landcare (SMC)).

The concept of Landcare in a formal sense was the result of a combined approach to the Australian Government in 1989 from the National Farmers Federation and the Australian Conservation Foundation. The input of both these groups has been most valuable, and the SMC has been very grateful to have members from each of them amongst its number.

For some years Mark Wilkins has represented the ACF on the South Australian Committee, but now, due to changing work commitments, Mark has resigned, and his place has been taken by Rowena McLean, the Adelaide ACF Rural Liaison Officer.

After being the representative for the SMC on the Advisory Board of Agriculture Ken Schuster has now been elected Chairman of that Board, and has stood down from the SALC. His place has been taken by Advisory Board member Bill Richards from Kangaroo Island.

Michele Pope, Principal, Curriculum Unit of the South Australian Department of Education and Children's Services (DECS), has provided very

valuable leadership in the Kids for Landcare Program. Her work commitments have now changed within the Department, and her place is being taken by Stephen Blight.

Founding member, Mike Kluge, has resigned after five years of sterling service to the SMC as the representative of the Soil Conservation Council (SCC). Mike's place will be taken by another member of the SCC to be appointed by the Minister of Primary Industries early in the new year.

The SALC has been most grateful for the valuable contributions made by Mark Wilkins, Ken Schuster, Michele Pope and Mike Kluge, and wishes them well for their future commitments.

The SALC welcomed Denys Slee as a new member, representing the media, which is so important for the awareness-raising aspects of its work. Denys has been editor of the journals "Landcare News", "The Bush Chronicle" and "Outback" for a number of years. These journals are very valuable in promoting the message of ecologically sustainable development and landcare in agriculture, the pastoral industry



and in nature conservation.

(A full list of membership for 1994 is listed on P. 8 & 9)

The SALC met five times during 1994 during which major activities were: conducting a Forum of Review in March - Landcare Month - and, acting as the South Australian Branch of the Landcare Foundation.

At the November meeting, members warmly congratulated Barbara Hardy on being named the

winner of the 1994 ABC Eureka Prize for the Promotion of Science at the Australian Museum in Sydney. The award was established to recognise an individual or company responsible for increasing public awareness about the role and contribution of science.

Barbara was particularly delighted for the recognition this gave her Landcare involvement and the Investigator Science and Technology Centre.

## THE 1994 LANDCARE FORUM

In view of the fact that the SMC was first appointed by the Government in 1989 to create awareness and to coordinate the State's Landcare activities, it was decided that a Forum should be arranged to review the achievements (and otherwise) of the past four years, to identify key issues, and to plan new directions for the future. Representatives of groups and organisations from many different fields, both Government and non-Government, were invited to attend, and to participate in the review to be held on 10 and 11 March during Landcare Month. The forum was very capably and effectively organised by State Landcare Coordinator (and Executive Officer of the SALC), Mrs Cicely Bungey, with the assistance of Landcare Unit staff, Dr Geoffrey Bishop (Education and Public Relations Officer), and Ms Rebecca Lang (Landcare Officer, Adelaide)

(Background notes which appear as an Appendix to this Report provide a brief history of the formation of the SMC, and its original objectives. The notes also list and explain other government organisations, both Federal and State, which interact to some degree with the SMC.)

At the time of this Forum it was noted that since the Roy Morgan survey in July 1991, awareness of Landcare in South Australia had increased from 32.4% to 57.3%, and that the September 1993 survey indicated that Adelaide had the highest capital city awareness in the nation of 49%. However, it was realised that much still remained to be done in the transfer of awareness into action.

The first Landcare Forum was held in November 1989, and it was heartening to note that a large number of the projects formulated then had been successfully accomplished, while others were in progress:

- The Register of Landcare groups (March 1994) exceeded 265.
- The "Landcare News" distribution had risen from 2500 in 1990 to 6200 in 1994.
- The 26 Education Department Centres of Excellence were currently being replaced with a Focus Schools in Environmental Education program. There are 470 State schools which include Landcare projects in their teaching program, some with as many as 40 different Landcare projects. The Independent and Catholic schools are also including Landcare activities in their school program at a growing rate.
- The Kids for Landcare Outdoor Classroom at Golden Grove has been hailed as a model throughout the country.



*Interested listeners at the Landcare Forum.*



- Success at a national level in the National Landcare Awards has exceeded other States. During the three years that National Awards have been presented, South Australia has been successful each year and has won five of the 25 Awards that have been offered.

In cooperation with the Landcare Unit of the Department of Primary Industries (PISA) and Landcare Australia (LAL), the SMC has been successful in raising the awareness of Landcare in South Australia (57.3% as previously reported) to the extent that PISA and Landcare Officers are fully stretched to keep up with community requests.

## Results of the Forum

Five major issues were highlighted after much discussion among delegates to the Forum:

- **Farmer Viability:** was seen as vital to the ongoing program of conservation if farmers were to have the time and resources to devote to projects which would lead to ecologically sustainable development of their land, as well as of districts and catchments. The need to reform the national accounts was seen to be important, so that they reflect the true costs of resource depletion and degradation, and expose the environmental, economic and social costs of rural decline - and the benefits which could eventuate if natural resources were valued correctly, as natural capital, eg. improved health and nutrient value of the soil due to landcare activities.
- **Education:** While it was recognised that an enormous amount of work had already been done eg. the Kids for Landcare Program and the Outdoor Classroom, the focus had been too narrow. Education at all levels, including teachers and secondary and tertiary students should be upgraded so that environmental education/landcare expertise and related issues would permeate right through the curriculum.
- **Urban Awareness:** of Landcare was seen to be increasing, but a great amount still needed to be done. There needs to be a greater understanding by urban communities of the impact humans have on land and water resources, and their responsibility for it. It has become increasingly evident that there is an enormous amount of energy in the urban community that needs to be harnessed in order to achieve the aim of ensuring that all Australians adopt the Landcare ethic.
- **Local Government:** has the potential to be the key level of government servicing Landcare. Issues such as pest and weed control, roadside vegetation management, rehabilitation work on parks and reserves were mentioned. Extra resources and appropriately trained staff would be required.
- **Aboriginal Involvement:** was seen to be important. It was recognised that Aboriginal people have a spiritual relationship with land. It was thought desirable to encourage Aboriginal people to meet to discuss Landcare during 1995.



Williamstown, Lyndoch and Districts Landcare Group - one of the State's most active groups.



Williamstown, Lyndoch and Districts Landcare Group at the conclusion of the LEAP fencing project at Tweedies Gully.



Delegates noted that a great deal of effort was being made by a relatively small and committed group of people. It was important to recognise this commitment, and to endeavour to develop a national landcare ethic in all generations, to enable far more people to assume responsibility now and in the future for a sustainable Australia.

Outcomes from the Forum were discussed in detail and responses were sought from delegates and other groups. A Strategy for the Future was then developed. Of the five major issues, it was decided that farmer viability was outside the role and ability of the SMC, and that it should be handled by farmer organisations.

## STRATEGY FOR THE FUTURE OF LANDCARE IN SOUTH AUSTRALIA

The following recommendations were developed from the wide variety of responses and were unanimously approved by the SMC in August 1994:-

### Recommendations:

- 1 That the SMC be renamed "The SA Landcare Committee" (SALC).
- 2 The Aim of SA Landcare Committee to be **"To encourage community wide networks to increase awareness, understanding and involvement in Landcare"**.
- 3 **The objectives:**
  - to promote landcare as a means of maintaining our natural resources as the necessary foundation to ensure economically, ecologically, and socially sustainable land use.
  - to promote the establishment and development of Community Landcare Groups and to assist with communication and cooperation between all people involved in landcare activities.
  - to encourage and promote educational opportunities to ensure that all South Australians are aware of and understand Landcare.
  - to provide and promote information about landcare activities to the community and all groups interested in Landcare
  - to assist Landcare Australia Ltd in the promotion and support of the Landcare Foundation
  - to ensure that the State Government and its agencies are well briefed on Landcare.
- 4 **Appointments:**  
That the Minister continue to appoint members of the committee so as to be broadly representative of the community.  
That SALC members serve a three year term  
That the Committee include representatives of the media and Local Government

That the Soil Conservation Council representative on SALC provide a close link between the two organisations with reports to both as appropriate. (Summary notes of the SCC and the SALC Minutes to be exchanged).  
That the Chairperson of the SALC report directly to the SCC should important issues arise.  
That the Chairperson of SALC serve as South Australia's representative on the LAL Board.

### 5 Subcommittees:

- That the current subcommittee structure be disbanded, leaving the Media and Education subcommittees the only ones to be retained.
- 6 That a Forum be held in 1995 to ensure that agencies working on Landcare related projects continue to be informed and motivated.
  - 7 That SALC focus on its current objectives of providing educational opportunities for all levels; networking with all groups involved with landcare activities; the promotion and awareness of landcare generally; and support for the Landcare Foundation.
  - 8 That planning take place to arrange a landcare Forum to involve Aboriginal people in March 1995.

The objectives listed in (3) above have now taken the place of the objectives of the original SMC, and the current committee is now known as:  
**The South Australian Landcare Committee (SALC)**

### Membership of the SALC at the end of 1994 was as follows:

- Dr Barbara Hardy AO, Chairperson, with a longstanding interest in soil conservation
- Mr Michael Madigan, Chief Executive Officer, Primary Industries South Australia, with broad government experience
- Mr Don Pfitzner, past President of the United Farmers and Stockowners Association of South Australia



- Mr Bill Richards, farmer and member of the Advisory Board of Agriculture, was appointed in August 1994, taking the place of Mr Ken Schuster
- Ms Michele Pope, Principal, Curriculum Unit, Department of Education and Children's Services
- Mr Hume Macdonald, former State Manager, Corporate Banking, SA and NT, Westpac, with expertise from the commercial field
- Ms Rowena McLean, Rural Liaison Officer, Australian Conservation Foundation, with links to conservation/environment groups, taking the place of Mr Mark Wilkins.
- Mr Rob Tanner, representative of the South Australian Water Resources Council
- Mr Roger Wickes, General Manager, Sustainable Resources, Primary Industries South Australia
- Mr Mike Kluge, representative of the Soil Conservation Council resigned at the end of the year
- Mr Denys Slee, Denys Slee & Associates, media consultants, from November, a nominee of the Communications and Promotions sub-committee
- Executive Officer - Mrs Cicely Bungey AM, of Primary Industries (SA).

## LANDCARE SUBCOMMITTEE REPORTS

### Community Education

The Environmental Education/Landcare Community Education subcommittee met four times during the year. The group comprises representatives from a range of Government and non-Government organisations with an interest in environmental education. These include: the Department of Education and Children's Services (DECS), Department of Environment and Natural Resources (DENR) (Save the Bush, Water Resources, Public Communications), Primary Industries (SA) (Landcare, Forestry), KESAB (Keep South Australia Beautiful), Environmental Protection Authority, Greening Australia, Gould League of South Australia, Trees for Life, Conservation Council of South Australia, Marine and Coastal Community Network, South Australian Farmers' Federation and Australian Association for Environmental Education (AAEE).

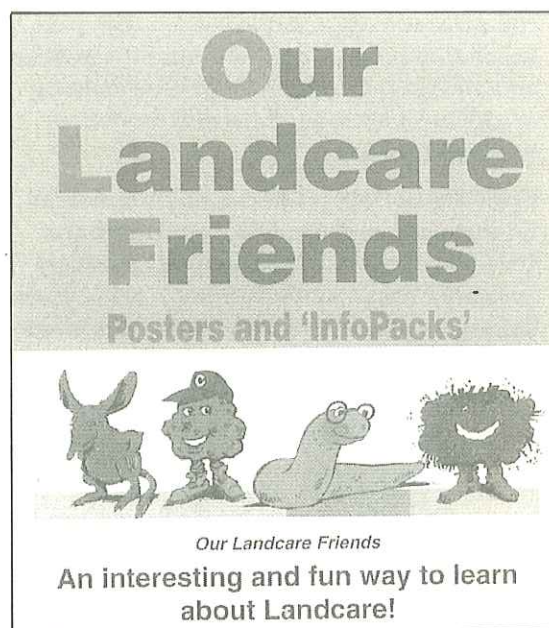
The subcommittee was convened by SALC member Michele Pope, Principal Curriculum Officer, DECS and after October by her successor, Stephen Blight.

The group has provided a forum for an exchange of information on the environmental education activities of the participating groups, and recently published educational resources are tabled at each meeting.

Some notable activities during the year included:

- Launch of "Our Landcare Friends" Landcare resources at the Landcare Forum in March. The resources, which comprise a set of 10 posters and two information booklets, were a joint production by DECS, Primary Industries,
- The Waterwatch program was launched in February and the resource manual prepared by DECS and others was released during April at a Waterwatch Training Day. The Water Resources Section of DENR is presently preparing additional curriculum materials for use in schools.

Engineering and Water Supply Department and the Department of Environment and Natural Resources (DENR). The resources were produced to help agencies respond to an ever increasing number of enquiries from students and teachers. "Our Landcare Friends" has been well received and sets have been requested from other States and New Zealand.





- The Gould League has continued to promote the school's Frogwatch resources with Dr Phil Suter from the Environmental Protection Authority co-ordinating a frog census during November.
- KESAB's Patawalonga Clean Waters Waterwatch Program continued during the year. Publicity was given to the results of the litter tagging project which was conducted in 1993 and involved a number of schools. The KESAB Waste Wise Van was again in demand to visit schools and KESAB launched its secondary school's resource "The Litter Challenge" during the year.
- Other school's resources prepared during the year include Echidna Kit (Gould League), Bat Pack (Primary Industries(SA)- Forestry), Mangrove protocol (Marine and Coastal Community Network), Kuitpo and Mt Crawford Forests education trails (Primary Industries(SA) -Forestry).
- Greening Australia has continued to develop its native vegetation/revegetation educational activities during the year. These complement the activities of the Save the Bush program in DENR. Greening Australia ran three community education field days on direct seeding, native plant recognition and seed collection; developed curriculum resources for vegetation projects and training for teachers; and, developed competency based training modules for accredited training in native vegetation issues.
- Chris Bayly, Project Officer, Environmental Education/Landcare, DECS produced the 1994-95 edition of *Environmental Education/Landcare Contacts* in November. This 12 page list of contacts is distributed to all schools and a host of people working in the area. This

edition has been expanded to include information on developing an environmental education program and a list of key resources.

- Landcare was again involved in the Young Achiever Award's Environment category and a number of schools entered for the award. Mitcham Primary School's worm farming program was a finalist in the category.
- The Kids for Landcare program at Ardtornish Primary School was a popular workshop session at the Community Landcare Conference held at Naracoorte in July. Students and teachers from the school presented the workshop.
- In November the Landcare in the Classroom Focus Schools in Environmental Education/Landcare was launched. The program will focus on teacher training and the development of curriculum. It is jointly sponsored by DECS, Primary Industries, National Landcare Program and the Australian Association for Environmental Education (AAEE). A number of the committee members will be involved with the training sessions during 1995.
- *Case Studies in and for Environmental Education/Landcare* a resource that looks at successful environmental education programs in schools was written during the year and will be published early in 1995.

## Communications and Promotions

The Communications and Promotions Subcommittee met three times during the year. The group is chaired by Ian Doyle from ABC Radio. Membership of the group includes people from television, the print media and education and promotions areas of Primary Industries, Department of Environment and



John Buckerfield, CSIRO Soils demonstrating worm sampling techniques to Landcare in the Classroom participants at Mount Barker.



Natural Resources, South Australian Farmers' Federation, Mount Lofty Ranges Catchment Centre and the CRC (Cooperative Research Centre) for Soil and Land Management.

The group did not meet for much of 1994 pending the outcome of the review of Landcare in South Australia. The report from the Landcare Forum in March was circulated to all members of the group for comment. The committee has met twice since then and is yet to finalise its future role and membership.

Dr Geoffrey Bishop has undertaken the role of Executive Officer from mid year from Cicely Bungey.

**Activities during the year included:**

- ABC Gardening Carpark Caper - The ABC Rural Radio's Ian Doyle and Talk Back Gardening presenters organised another very successful 'carpark caper' on 19 March. Hundreds of keen gardeners sold (or bought) plants during the morning. Funds raised at the event went to the Landcare Foundation.



*The ABC Car Park Caper a popular event during Landcare month.*

## MAJOR ACTIVITIES UNDERTAKEN BY THE LANDCARE UNIT

The Landcare Unit was involved in a range of activities during the year to promote a landcare ethic in the community and to encourage the adoption of appropriate resource management practices. Many of the activities were undertaken in association with other agencies, all of whom have a similar goal.

- World Environment Day at Belair National Park - a family environment day organised by the Department of Environment and Natural Resources. Landcare shared a display area with the Anti-Rabbit Research Foundation.
- The Fourth Community Landcare Conference was held at Naracoorte in July and was attended by over 200 landcarers from around the State. The conference was again organised by the Community Landcare Consultative Group and offered a wide variety of workshop sessions and field trips, including activities for children.



*Helen Alexander, National Landcare Facilitator, presented the "Sustainability and Viability" workshop with Neil Barr and John Fargher at the State Landcare conference held at Naracoorte.*



- Royal Adelaide Show, 2-10 September, Landcare participated in the Primary Industries' display, "Friends and Foes" and shared a stop on the Environment and Recreation Trail with State Flora. Some 32,000 people visited the trail stand. The display of insect pests and friends presented by State Flora generated a lot of interest.
- "Our Landcare Friends" resource materials were launched during March and orders for them since then have been excellent, coming from schools in South Australia, other Australian States and New Zealand.
- Landcare represented Primary Industries on the steering committee of the Commonwealth Development Bank Ibis Awards. The regional launches took place at schools involved in the Kids for Landcare program. This was the sixth year of the awards and once again they attracted entries of a very high standard. Regional PISA staff were involved in the judging of the awards. Regional winners were:

Williams family, Mt Barry Station via Coober Pedy, Nicholson family, Middleback Station via Whyalla (joint Pastoral region winners); Nield family, Campoonna Hill, Cleve (Eyre Peninsula); Trevor McCallum, Treveneth, Willowie (Mid North/Yorke Peninsula); James and Karen Mitchell, Carlyle, Angaston (Mt Lofty Ranges/Kangaroo Island); Geoff and Elizabeth Nicholls, Balinga, Jabuk (Murray Mallee); Ian McLachlan, Nangwarry Pastoral Company, Nangwarry (South East).

And, the overall winner was Roger, Margaret, Ricky and Kathryn Nield of Campoonna Hill, Cleve.

- Other activities included supporting regional officers at the Cleve Agricultural Field Days, judging of the Friends of Parks Landcare Award, presenting a session at the Geography Teachers' Association Conference and acting as category judge for the 1994 Channel Ten Young Achiever Awards, Environmental Award category.
- Enquiries about Landcare continued at a high level during the year reflecting the commitment of schools to environmental education, both in the Government and independent sectors. Some 207 written responses were made by the Publicity and Promotions officer during the year.
- Assessing applications from Landcare groups for the allocation of four Fuji Xerox photocopiers and fax units provided by Fuji



*Jennifer Trott, South East region Landcare officer (right) with students while staffing the Landcare stand at the Royal Adelaide Show.*

Xerox for distribution in South Australia as part of their \$800,000 national sponsorship of Landcare.

- Coordinated the attendance at the National Landcare Awards presentation in Canberra at the end of March (Landcare Month) of the nine South Australian award category finalists.
- A very popular workshop was organised during March by the Animal and Plant Control Commission on "Managing Weeds for Landcare" at the Waite Campus, University of Adelaide.
- The Chairperson of SALC launched an innovative native tree-planting project at Oakdale Estate, a new land sub-division at Gilles Plains. Children from Wandana Primary School planted, and will water and protect native plants as a joint initiative between the school and the developer, Avireen Pty Ltd.



*Our Landcare Friends posters were promoted at the Cleve Field Days.*



## THE NATIONAL LANDCARE AWARDS

On 29 March 1994, during Landcare Month, the Third National Landcare Awards were presented in the Great Hall, Parliament House, Canberra. The presentations were made by the Hon Paul Keating and the Leader of the Opposition Dr John Hewson. Over 500 members of the landcare movement were present on this very impressive occasion, and of the nine award categories South Australia won two. The nine South Australian nominees had been chosen in 1993 from 73 entries, a full account of which was reported in the 1993 Annual Report. The two National winners were:

- **Quarry Industries Ltd** won the **Ansett Landcare Business Award** by carrying out "a major rehabilitation of its Stonyfell Quarry involving a complicated process of extensive backfilling, contouring and the replanting of some 30ha of former quarry faces with 15,000 tubestock plants, and a huge number of direct seeded plants" (from LAL Fifth Annual Report). The Award was presented to Paul Whiffen, Environmental Manager for Quarry Industries in South Australia.
- **Andy Sutherland**, President of Trees for Life in South Australia, won the **National Landcare Program Individual Landcarer Award**. "Andy Sutherland has been President of Trees for Life since 1982 and has been a tireless worker in promoting revegetation in South Australia. His drive and commitment have been highly significant in the enormous growth of Trees for Life as an organisation, its community support and its achievements" (from LAL Fifth Annual Report 1994).



*Paul Whiffen, representing Quarry Industries, winner of the Ansett Landcare Business Award (left), with Dr Barbara Hardy AO (centre) and Andy Sutherland, President of Trees for Life (right) the winner of the National Landcare Program Individual Landcarer Award, at the presentation dinner in the Great Hall of Parliament House, Canberra.*

The SALC is very proud of these two winners of National Landcare Awards, and is very pleased that so many excellent projects, groups and individuals in South Australia are keen to enter these awards. Nominations for the South Australian section of the 1995-96 National Landcare Awards will be called in March 1995 – Landcare Month.

## RELATIONSHIP WITH LANDCARE AUSTRALIA LTD

Landcare Australia Ltd (LAL) is a non-profit company formed by the Commonwealth Government, limited by guarantee and incorporated in the Australian Capital Territory in October 1989. Its principal aims are to raise awareness about landcare and to develop a landcare ethic in all Australians, and to raise funds from the corporate sector and the community to support the landcare effort.

Landcare Australia Ltd is managed by a Board of Directors including representatives from each State and territory, large companies, the media, the

Australian Conservation Foundation, the National Farmers Federation, the CSIRO and the Commonwealth Government.

During 1994 the founding Chairperson, Mr Jim Kirk AC, retired, and Mr John Claringbould was appointed by the Commonwealth Government to chair LAL. Mr Claringbould has an Honours Degree in Law, and is Director Australasia and Asia of Effem Foods Pty Ltd part of the giant Mars Confectionary group of the USA. He also has had a 20-year involvement in bio-dynamic farming on his property in Victoria.



South Australia's representative on the LAL Board is the Chairperson of the SALC, Dr Barbara Hardy.

LAL meets quarterly in Sydney to review progress, refine policy and agree on targets. It has five staff members, the Executive Director being Mr Brian Scarsbrick, and its work is funded by a fee from the Commonwealth Government for specific services supporting the National Landcare Program (during 1994-95 this was \$500,000), moneys received from sponsorship, fees for use of the Landcare logo, donations to the Foundation, and interest earnings.

#### Highlights for the year for LAL were:

- According to Roy Morgan surveys, awareness of landcare in the general community continued to grow and reached 53% (September 1993) on a national basis, from 44% in November 1992.
- The number of community landcare groups across Australia rose to 2200 (June 1994). While LAL does not have a role in 'administering' the landcare group network, it relies heavily on the network for support in carrying out its awareness-raising functions, particularly events such as National Landcare Month (March), National Landcare Day (first Friday in September) and the National Landcare Awards.
- The establishment of the Landcare Foundation to financially assist community based landcare, initially through a professional fundraising campaign to raise \$10m over 3 years. Sir James Hardy OBE accepted appointment as Chairman of the Foundation, and voluntary fund-raising teams have been formed in each of the States and Territories. South Australia's Landcare Committee has taken on the role of its fund-raising team in this State, with the addition of a number of co-opted members.
- The presentation by the Prime Minister Mr Keating and the then Leader of the Opposition, Dr Hewson, of the 1994 National Landcare Australia Awards in the Great Hall, Parliament House, Canberra, with wide media coverage for the winners (from LAL Annual Report 1993-94).
- The raising of over \$4m in continuing support from sponsors, bringing to over \$12m total funds raised since LAL's incorporation (see LAL Annual Report 1993-94 for details). 43 sponsors are listed in 1993-94, an increase on the previous year. LAL is grateful for this support on which it is increasingly reliant as the Commonwealth funding is reducing as the Company moves to a 'fee for service' basis. LAL uses its tax deductibility status to assist landcare groups in their fun-raising efforts. A fund-raising kit has been developed and increasing numbers of groups are making use of this facility. The very large number of sponsorships are described in detail in the LAL Annual Report for 1993-94, and are most praiseworthy. Many Australian companies are giving welcome support to landcare work 'on the ground' where it is so badly needed.

## THE LANDCARE FOUNDATION - SOUTH AUSTRALIAN COMMITTEE

As described in the 1993 South Australian Annual Report, the Landcare Foundation has been formed by LAL to raise money for landcare projects. Donations are tax deductible. Projects which will be funded by the Foundation include:

- groups stopping the loss of topsoil caused by wind and water erosion
- groups replacing noxious weeds with native plants to rehabilitate the land
- community projects reversing water quality problems caused by salinity, nutrient run-off and toxic materials entering waterways
- dunecare groups restoring dune vegetation to protect valuable sand dune areas and to stop beach ecosystem damage

- projects which link urban and rural people, such as city dwellers growing trees for country properties and helping to plant the seedlings
- leading edge landcare technology such as adoption of aerial mineral exploration technology to map actual salt affected soil and areas likely to be affected, and
- awareness, education and training programs.

Through the Landcare Foundation major donors can 'adopt' a group, a project or a catchment and follow their progress over time (from "Landcare - in our hands" sponsored by Placer Pacific).

A project which the SALC is particularly interested in is the ongoing financial support for the Kids for



Landcare Outdoor Classroom at Golden Grove. As a 'living' classroom it continues to need teaching resources for the children, and materials such as seed, sand, salt, maintenance of paths, etc. all of which require funds.

The SA Foundation Committee is very capably led by Hume Macdonald, and includes most members of the SALC, plus co-opted members, Ian Doyle (ABC Rural Radio), Ian Thomas (recently retired Principal of Aldgate Primary School), Reg French (retired soil scientist), Bill Matheson (landcare consultant), and Jeff Arney, (former Chairman of the Advisory Board of Agriculture).

So far it has been rather difficult to attract 'team' members who are prepared to be trained and to go out and seek donations from the corporate sector, community organisations and individuals.

The SA Committee is most grateful to those people who have become involved, and feels sure that as more people become aware of the need for landcare to repair degraded land and to improve the health of Australia's soils, water and native flora and fauna, there will be more volunteers.

The South Australian section of the Landcare Foundation was formally launched by the Minister of Primary Industries, the Hon Dale Baker, on 4 May at a function held at the Investigator Science and Technology Centre and attended by about 60 interested people.

During the year Sir James Hardy OBE accepted Landcare Australia's invitation to chair the



*Peta Nagle, Campaign Manager for the Landcare Australia Foundation with Hume Macdonald (SA Committee chairperson) and Dr Barbara Hardy AO.*

Foundation, and his enthusiasm and input have been tremendously helpful.

The national launch of the Landcare Foundation took place on 23 November, and was arranged by the State Branches of the Australian Institute of Company Directors as their support for Landcare.

The launch took the form of high profile luncheons in each State, which were video-linked across the nation. Speakers were Chairman Sir James Hardy OBE, Mr Brian Loton AC (Chairman of BHP Co. Ltd), and the Federal Minister for Primary Industries and Energy, Senator the Hon. Bob Collins, who spoke from Darwin and formally launched the Foundation. There was considerable media coverage of the launch.

The South Australian team have approached a number of SA-based companies, and have assisted with support and contacts for approaches to some national corporations.



*Hume Macdonald, SA Landcare Foundation Committee chairperson with president of the SA and Northern Territory branch of the Australian Institute of Company Directors James Porter with Dr Barbara Hardy AO, committee member and the Hon. Dale Baker, Minister for Primary Industries.*



Companies who have already made contributions in this State are Kidman Holdings Pty Ltd, Hills Industries Ltd, and Adelaide Brighton Ltd. The amount raised so far stands at \$21,954 of the \$750,000 which is South Australia's share of the three-year goal of \$10m. A number of generous donations from individuals are included in the South Australian total.

There are a considerable number of proposals currently being assessed by other companies, the results of which are eagerly awaited by team members. Some companies have felt unable to contribute in 1994, but it is hoped that they will plan to donate in their budgets for 1995 and 1996.

Committee member Mike Kluge, and Chairman Hume Macdonald, have visited the Riverland hosted by Brian Caddy, Mayor of Berri, to talk with companies based there.

A preliminary meeting in Mount Gambier has also been held, arranged by Mr Ken Schuster and hosted by the Mayor, Mr Don McDonald. A number of follow-up approaches are planned.

There is still a great amount of effort required in order to reach South Australia's target of \$750,000, and the SA Committee looks forward to hearing from companies, groups and individuals who may wish to contribute, and/or to assist with the task of approaching potential donors.

## THE KIDS FOR LANDCARE OUTDOOR CLASSROOM

The Management Agreement between the Tea Tree Gully Council and the Minister of Education and Children's Services was approved and signed in March.

A new Management Committee has now been formed under the chairmanship of Tea Tree Gully Council member Mr Brian Lees. Retiring Chairman, Ian Hobbs, was thanked for his major contribution as one of the instigators of the project. Cicely Bungey (Landcare Coordinator), Barbara Hardy (SALC Chairperson), and Paul Kuhlmann (Project Manager from SACON) all stood down to make way for local community members and new representatives of the organisations now involved.

A spillway bridge has been built by the Brookway Park School of Horticulture. A simulated rabbit burrow has been installed by the Animal and Plant Control Commission.

The Hub Group of local schools maintain their designated areas of the 5.8ha site by propagating replacement vegetation and weeding.

Primary Industries provides technical expertise for the project, and a Friends of the Outdoor Classroom has been formed involving local residents. A community grant has been successfully obtained by the Friends from Golden Grove Development for projects related to the ruined dwelling (and surrounds) of the original settlers, the Carter family.



*Lindsay Nothrop and colleagues from the DPIE visited the Kids for Landcare Outdoor Classroom at Golden Grove to inspect a number of NLP funded projects. Students took the group on one of the three educational trails.*



## THE FUTURE

During 1994, Andrew Campbell launched the book which he and Greg Siepen had written as a result of Andrew's experiences gained from three years in the role of National Landcare Facilitator. Amongst many thought-provoking, hard-hitting, but praiseworthy words, he said:

"Landcare is uniquely Australian. The combination of relatively unstructured community participation at a district level, tackling a broad range of environmental and production issues, supported by government funding and major non-government organisations including farmers and conservationists, is without parallel in other industrialised worlds."

The SALC must frequently remind itself of this impressive truth. Landcare is so important to Australia's future - but, it must be nurtured sensitively, rather than driven reluctantly.

Andrew Campbell had said in November 1992 when he wrote his last report as National Landcare Facilitator:

"Landcare groups are local voluntary groups of people, mainly comprised of land users in rural

areas, whose primary aims are to tackle land degradation and develop more sustainable land management policies".

When these words were written there were about 1400 community landcare groups in Australia. Now, at the end of 1994, there are more than 2000 such groups.

Even though the SALC does not have any direct 'administrative' involvement with the 285 groups here in South Australia, it offers a supportive role by endeavouring to 'spread the message' of Landcare throughout the urban community and the schools system, and by taking on the responsibility for fund-raising through the Landcare Foundation.

Strengthened by its agreed new Strategy, the SALC hopes to offer a truly supportive role to the admirable community landcare group network, and looks forward to an effective and successful year in 1995.



**Dr Barbara Hardy AO**  
**CHAIRPERSON, SALC**

16 January 1995



*Rodwell Creek Landcare Group members relaxing after a meeting with Peta Nagle, Campaign Manager Landcare Foundation and Cicely Bungey AM, Executive Officer of the SA Landcare Foundation Committee to discuss seeking local (tax deductible) sponsorship for the group.*



## APPENDIX: - Background Notes

**The State Management Committee for the Decade of Landcare** was appointed by State Cabinet in 1989, following the national pronouncement of the Year of Landcare, and subsequently, the Decade of Landcare.

**The Objectives of the SMC were:**

- to facilitate cooperation and coordination between all groups involved in landcare activities.
- to involve all South Australians in landcare activities during the Year and Decade of Landcare in ways which will assist in preventing and correcting misuse of land in their home environment, workplace and local community
- to ensure that land use is recognised as each individual's responsibility by raising the level of community awareness, understanding of, and concern for, effective and sustainable land use.
- to provide educational opportunities which will ensure that all South Australians are aware of the need for landcare and have a positive attitude to it.
- to include in land use planning, recognition of the need for preservation and management of land with its native flora and fauna.

**Landcare Australia Ltd**, a non-profit company, was formed in October 1989 with the national mission statement "to develop a landcare ethic amongst all Australians and to raise consciousness of the fact that only careful management of the land and all its resources will maintain our quality of life and that of future generations"

The company's objects are as follows:

- to develop a landcare ethic amongst all Australians
- to encourage and stimulate awareness of the importance of landcare and the adoption of landcare principles
- to encourage and stimulate public participation in landcare activities
- to encourage and facilitate education on landcare principles in schools and the community generally
- to educate and disseminate all forms of information through all media to promote the objects of the company

- to develop activities to attract corporate and community funding for appropriate projects consistent with the objects of the company
- to distribute funds to appropriate projects consistent with the objects of the company.

**The Soil Conservation Council** was formed with the enactment of the Soil Conservation and Land Care Act 1989, in March 1990.

**The role of the twelve person Soil Conservation Council is:**

- to advise the Minister of Primary Industries on the administration of the Act
- to develop integrated strategies for the conservation and rehabilitation of the land of the State
- to disseminate information on the state of the land resources
- to promote community awareness and involvement in issues relating to conservation and rehabilitation of land.

**The Natural Resources Council** with its membership of 16 was formed in June 1992. The NRC provides the Government with independent, multi-disciplinary, integrated advice and information on the maintenance and ecologically sustainable development and use of South Australia's natural resources.

The aim of the NRC as the peak body providing advice on natural resources, is to assist the Government in developing natural resource policies, through a planned and coordinated approach, (including economic conditions) which will secure for current and future generations:

- sustainable development that ensures minimal impact on ecological processes and systems
- an equitable distribution of the costs and benefits of natural resource development and use
- a sustained quality of life and prosperity for individuals and the community.

**The main functions of the NRC are:**

- to seek and coordinate information
- to identify and clarify issues
- to provide the government with advice
- to develop and recommend coordinated policies
- to consult with relevant government and community sectors on natural resource issues.

In addition to the above, we now have the **National Landcare Advisory Committee** established in July 1993. NLAC's goal is "To advise the Ministers and the Government (Federal) on all matters relevant to Landcare ie the management of the use, development and conservation of Australia's natural resources, and to work with all sectors of the community to encourage ecologically sustainable development for land, water and vegetation resources, and for practices which involve those resources."

All of these committees have been formed since the Cabinet appointment of the State Management

Committee for the Decade of Landcare in July 1989. They all have some overlapping roles and responsibilities. In the interests of efficiency and the demands on the time of a dedicated few, it has been timely to examine ways to streamline its operations. One of the five main areas for future action identified at the Landcare Forum, is the need for education at all levels. The SALC (formerly SMC) is the only body of those listed above with this responsibility.

The role of the SALC is considered vital if the level of awareness and subsequent support of soil conservation and land care within government circles and the general community is to continue.

