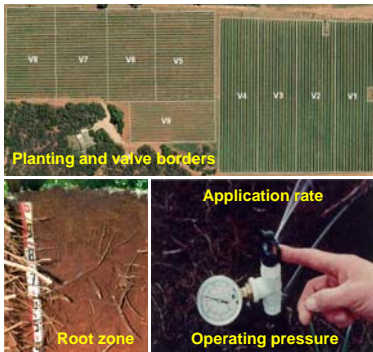


IRES: Irrigation Recording & Evaluation System

- How much water is applied to each crop variety ?
- How much irrigation water is wasted?
- How does irrigation management affect yield and returns?

1. Plan, map and label planting patches and irrigation valve units.



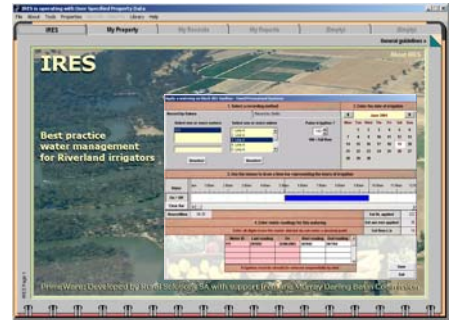
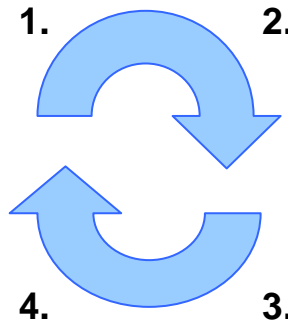
Record crop and irrigation system information

2. Record irrigation events.



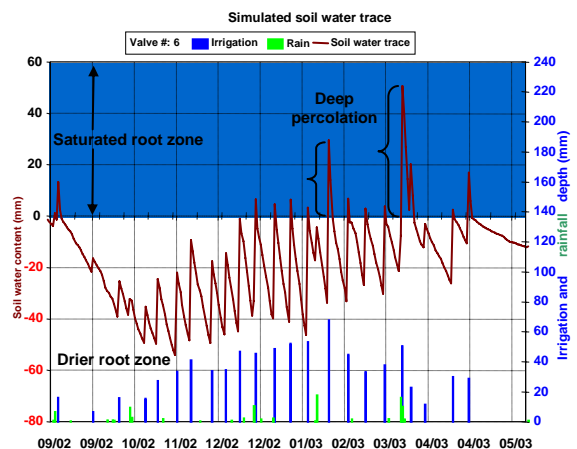
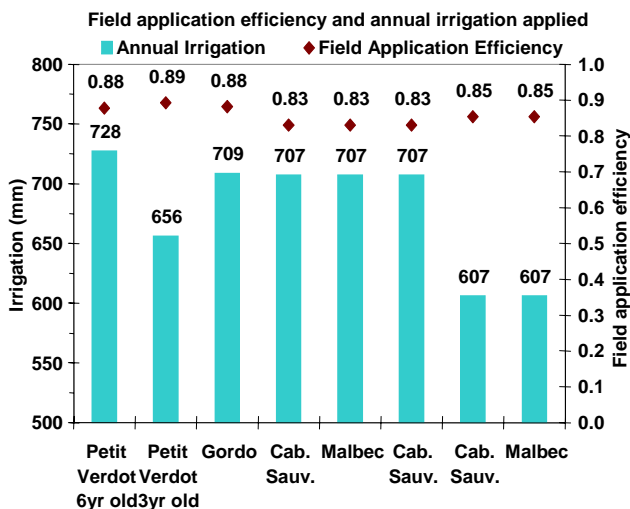
Record irrigation dates, hours, valves and water meter readings in the record booklet or computer using IRES software

4. Identify opportunities to improve irrigation management and water use efficiency.



3. Check water use efficiency (WUE)

Use WUE indicators to review irrigation management, water use efficiency and production



IRES: Irrigation Recording & Evaluation System

What is IRES?

IRES is a computer program for irrigators to record irrigation events, simulate soil water content of crop rootzones and evaluate irrigation efficiency. IRES is developed by the Irrigated Crop Management Service (ICMS) for Primary Industries and Resources SA (PIRSA).

Why should irrigators use IRES?

Irrigators who keep irrigation records should be able to evaluate and quantify their irrigation decisions. IRES arms growers with the power to analyse irrigation activities to the valve, variety or rootstock level.

IRES enables growers to use their Irrigation records as an important management tool.

IRES has been developed from years of listening to what growers are looking for to manage irrigation activities. Suggestions and feedback from more than 100 growers have already been incorporated into IRES software since its inception in June 2005.

IRES is a user friendly package with practical recording requirements. Records are simple to analyse. It produces a wide range of standard and customised outputs that are easy to interpret.

IRES enables growers to evaluate water use efficiency and review irrigation management to meet market requirements and improve profitability.

Who can access the data I enter in IRES?

IRES is designed for use on farm computers. The data entered into IRES remains confidential. Growers may choose to anonymously share certain parts of their data with the ICMS to generate district irrigation efficiency statistics. The grower can anonymously benchmark their property against other anonymous properties in the district.

What's happening with IRES now?

Development work on IRES is continuing. IRES is currently being trialled with grower groups in the Murray Lands, Southern Vales and South East of South Australia.

Growers from irrigation districts in South Australia are invited to contact the ICMS to discuss software access, training and installation.

IRES has been funded by Primary Industries and Resources SA and supports the Land & Water Management Plan initiatives of the South Australian Murray Darling Basin Natural Resources Management Board and the Dept. Water, Land and Biodiversity Conservation.

For more information contact **Tony Adams**, ICMS Rural Solution S.A.

ph. (08) 8595 9138