



***Petroleum and Geothermal Energy Act 2000***  
**S.115**

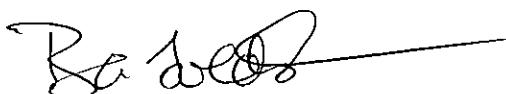
**MEMORANDUM**

**GEOHERMAL EXPLORATION LICENCES**  
**GELs 316, 323 and 324**

1. Consolidation of the adjacent licence areas of GELs 316, 323 and 324, whereby the consolidated licence area is now designated as GEL 316 is hereby entered on the public register.

The total area of GEL 316 is now 1,492 square kilometres approximately.

2. Revocation of GELs 323 and 324 is hereby entered on the public register.



**BARRY A. GOLDSTEIN**  
**Executive Director Petroleum and Geothermal**  
**Minerals and Energy Resources**  
**Primary Industries and Resources SA**  
**Delegate of the Minister for Mineral Resources**  
**Development**

Date: 5 July 2011

Ref: F2011/000291

# ***Petroleum and Geothermal Energy Act 2000***

## **Consolidation of licence areas Geothermal Exploration Licences GELs 316, 323 and 324**

## **Revocation of licences Geothermal Exploration Licences GELs 323 and 324**

I, BARRY ALAN GOLDSTEIN, Executive Director Petroleum and Geothermal, Minerals and Energy Resources, Department of Primary Industries and Resources, in the State of South Australia, pursuant to section 82 of the *Petroleum and Geothermal Energy Act 2000* and all other enabling powers, for and on behalf of Tom Koutsantonis, Minister for Mineral Resources Development (Minister), pursuant to delegated powers dated 1 October 2009, hereby;

1. consolidate adjacent areas of Geothermal Exploration Licences GELs 316, 323 and 324 held by –

### **Clean Energy Australasia Pty Ltd**

ACN 122 645 229

The consolidated licence area shall hereafter be designated as:

### **Geothermal Exploration Licence GEL 316**

#### **DESCRIPTION OF CONSOLIDATED AREA**

All that part of the State of South Australia, bounded as follows:-

Commencing at a point being the intersection of latitude 27°19'00"S GDA94 and longitude 140°47'00"E GDA94, thence east to longitude 140°52'00"E GDA94, south to latitude 27°22'00"S GDA94, east to longitude 140°53'00"E GDA94, south to latitude 27°23'00"S GDA94, east to the eastern border of the State of South Australia, thence southerly along the border of the said State to latitude 27°35'00"S GDA94, west to longitude 140°50'00"E GDA94, north to latitude 27°33'00"S GDA94, west to longitude 140°49'30"E GDA94, north to latitude 27°30'00"S GDA94, west to longitude 140°36'00"E GDA94, south to latitude 27°31'00"S GDA94, west to longitude 140°35'00"E GDA94, south to latitude 27°37'00"S GDA94, west to longitude 140°33'00"E GDA94, south to latitude 27°38'00"S GDA94, west to longitude 140°23'00"E GDA94, south to latitude 27°39'00"S GDA94, west to longitude 140°22'00"E GDA94, south to latitude 27°40'00"S GDA94, west to longitude 140°21'00"E GDA94, south to latitude 27°41'00"S GDA94, west to longitude 140°20'00"E GDA94, south to latitude 27°42'00"S GDA94, west to longitude 140°17'00"E GDA94, south to latitude 27°43'00"S GDA94, west to longitude 140°15'00"E GDA94, south to latitude 27°44'00"S GDA94, west to longitude 140°14'00"E GDA94, south to latitude 27°45'00"S GDA94, west to longitude 140°13'00"E GDA94, north to latitude 27°42'00"S GDA94, west to longitude 140°10'00"E GDA94, north to latitude 27°32'00"S GDA94, east to longitude 140°14'00"E GDA94, north to latitude 27°30'00"S GDA94, east to longitude 140°16'00"E GDA94, north to latitude 27°27'00"S GDA94, east to longitude 140°22'00"E GDA94, south to latitude 27°29'00"S GDA94, east to longitude 140°35'00"E GDA94, north to latitude 27°27'00"S GDA94, east to longitude 140°38'00"E GDA94, north to latitude 27°26'00"S GDA94, east to longitude 140°39'00"E GDA94, north to latitude 27°25'00"S GDA94, east to longitude 140°47'00"E GDA94 and north to the point of commencement.

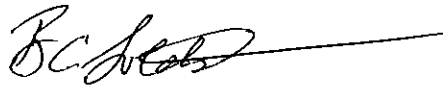
AREA: **1492** square kilometres approximately.

2. consequently revoke Geothermal Exploration Licences GELs 323 and 324

As a consequence of the consolidation, the work program forming 'condition 1' of the consolidated GEL 316 comprises:

Year of Term of Licence	Minimum Work Requirements
One	<ul style="list-style-type: none"><li>• Geological and geophysical review. <i>(to be conducted anywhere within the boundaries of GELs 316-320, 322-324 and 390-392)</i></li></ul>
Two	<ul style="list-style-type: none"><li>• Geological and geophysical review. <i>(to be conducted anywhere within the boundaries of GELs 316-320, 322-324 and 390-392)</i></li></ul>
Three	<ul style="list-style-type: none"><li>• Geological and geophysical review. <i>(to be conducted anywhere within the boundaries of GELs 316-320, 322-324 and 390-392)</i></li></ul>
Four	<ul style="list-style-type: none"><li>• Geological and geophysical review. <i>(to be conducted anywhere within the boundaries of GELs 316, 317 and 320)</i></li></ul>
Five	<ul style="list-style-type: none"><li>• Drill one deep well (approximately 3,000 to 4,000m). <i>(to be conducted anywhere within the boundaries of GELs 316, 317 and 320)</i></li></ul>

Dated: 5 July 2011



**BARRY A. GOLDSTEIN**  
**Executive Director Petroleum and Geothermal**  
**Minerals and Energy Resources**  
**Primary Industries and Resources SA**  
**Delegate of the Minister for Mineral Resources**  
**Development**

The following signature evidences the consent of the licensee to the consolidation of GELs 316, 323 and 324 as set out in this document and made pursuant to Section 82 of the *Petroleum and Geothermal Energy Act 2000*.

Signed for and on behalf of **Clean Energy Australasia Pty Ltd** by its authorised representative:

.....  
Date

17 JUNE 2011  
.....

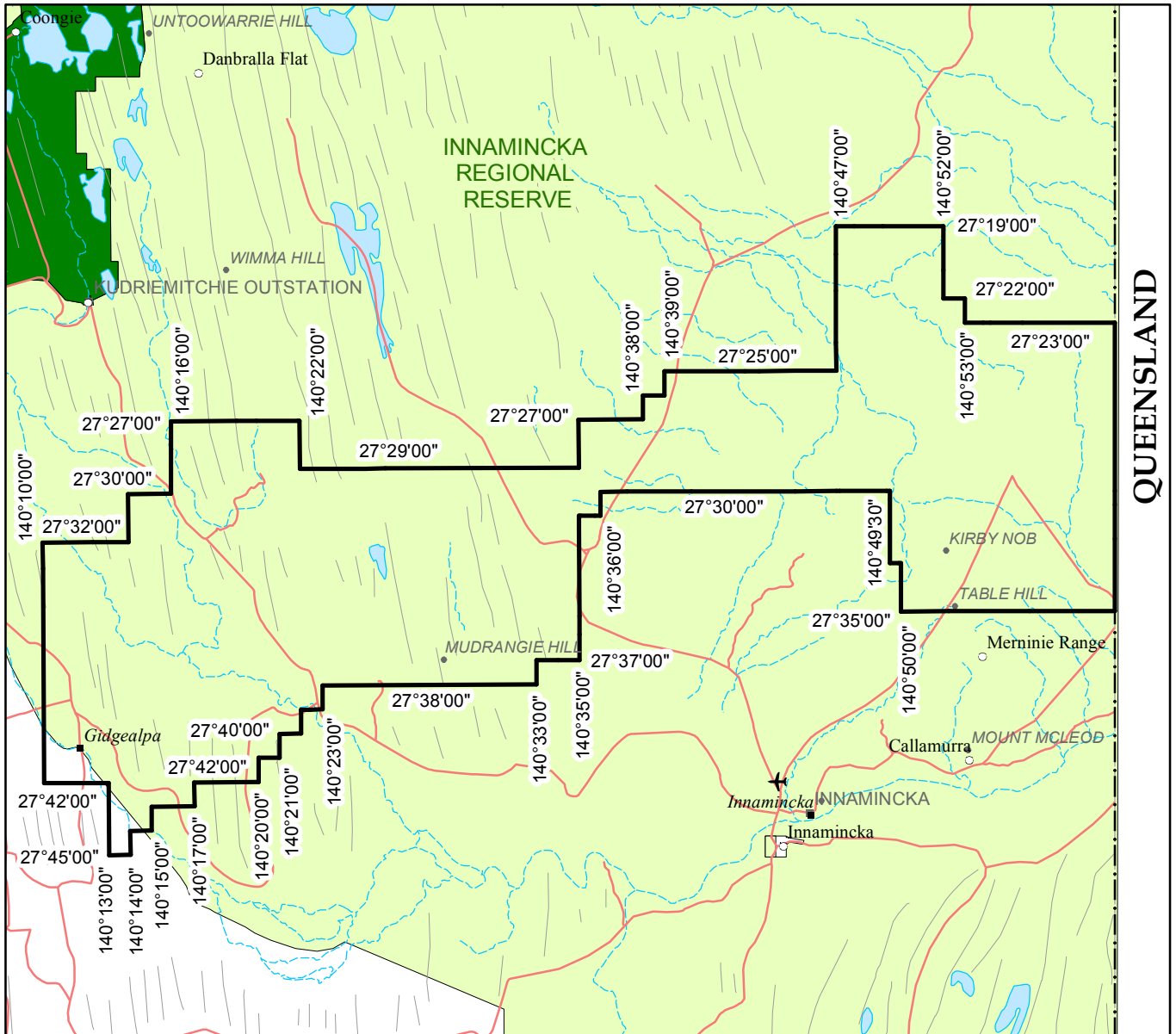
Authorised Representative

JOE REICHMAN  
.....

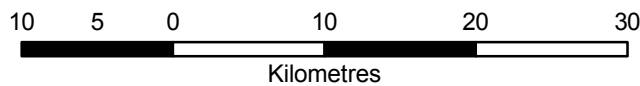
Name

CEO  
.....

Position



SCALE 1:500 000



Note: There is no warranty that the boundary of this licence is correct in relation to other features of the map. The boundary is to be ascertained by reference to the Geocentric Datum of Australia (GDA94) and the schedule.

THE PLAN HEREINBEFORE REFERRED TO

## GEOHERMAL EXPLORATION LICENCE NO: 316



Government of South Australia  
Primary Industries and Resources SA

F2011/000291

AREA: 1492 sq km (approx)

## PETROLEUM AND GEOTHERMAL ENERGY ACT 2000

*Suspension of Geothermal Exploration Licences—  
GELs 316, 317, 318, 319, 320, 322, 323, 324, 390, 391 and 392*

PURSUANT to Section 90 of the Petroleum and Geothermal Energy Act 2000, notice is hereby given that the abovementioned Geothermal Exploration Licences have been suspended for the period from and including 1 June 2011 until 31 May 2012, under the provisions of the Petroleum and Geothermal Energy Act 2000, pursuant to delegated powers dated 1 October 2009.

The expiry date of GELs 316, 317, 318, 319, 320, 322, 323, 324, 390, 391 and 392 is now determined to be 2 June 2014.

Dated 30 May 2011.

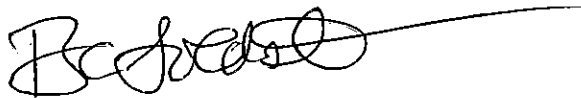
B. A. GOLDSTEIN,  
Executive Director Petroleum and Geothermal  
Minerals and Energy Resources  
Primary Industries and Resources SA  
Delegate of the Minister for Mineral  
Resources Development

***Petroleum and Geothermal Energy Act 2000***  
**S.115**

**MEMORANDUM**

**GEOHERMAL EXPLORATION LICENCES**  
**GELs 316, 317, 318, 319, 320, 322, 323, 324, 390, 391 and 392**

1. Suspension of licences from and including 1 June 2011 to 31 May 2012 is hereby entered on the public register.
2. The expiry date of GELs 316, 317, 318, 319, 320, 322, 323, 324, 390, 391 and 392 is now determined to be 2 June 2014.



**BARRY A. GOLDSTEIN**  
**Executive Director Petroleum and Geothermal**  
**Minerals and Energy Resources**  
**Primary Industries and Resources SA**  
**Delegate of the Minister for Mineral Resources Development**

Date: 30 May 2011

Ref: 27/2/489  
27/2/525

***Petroleum and Geothermal Energy Act 2000***  
**S.90**

**SUSPENSION OF  
GEOHERMAL EXPLORATION LICENCES  
GELs 316, 317, 318, 319, 320, 322, 323, 324, 390, 391 and 392**

I, BARRY ALAN GOLDSTEIN, Executive Director Petroleum and Geothermal, Minerals and Energy Resources, Department of Primary Industries and Resources, in the State of South Australia, pursuant to the provisions of the *Petroleum and Geothermal Energy Act 2000* and all other enabling powers, for and on behalf of Tom Koutsantonis, Minister for Mineral Resources Development (Minister), pursuant to delegated powers dated 1 October 2009 hereby -

- a) suspend geothermal exploration licences GELs 316, 317, 318, 319, 320, 322, 323, 324, 390, 391 and 392, for the period from and including 1 June 2011 to 31 May 2012.
  1. No regulated activities are permitted to be carried out during the period of the suspension.
  2. The expiry date of GELs 316, 317, 318, 319, 320, 322, 323, 324, 390, 391 and 392 is now determined to be 2 June 2014.

Dated: 30 May 2011



**BARRY A. GOLDSTEIN**  
**Executive Director Petroleum and Geothermal**  
**Minerals and Energy Resources**  
**Primary Industries and Resources SA**  
**Delegate of the Minister for Mineral Resources Development**

**Petroleum and Geothermal Energy Act 2000  
S.115**

**MEMORANDUM**

**GEOHERMAL EXPLORATION LICENCES  
GELs 316, 317, 319, 320, 322, 323 and 324**

1. Variation of licence conditions is hereby entered on the public register.



**BARRY A. GOLDSTEIN  
Director Petroleum and Geothermal  
Minerals and Energy Resources  
Primary Industries and Resources SA  
Delegate of the Minister for Mineral Resources Development**

Date: 28 May 2010

Ref: 27/2/489

# Petroleum and Geothermal Energy Act 2000

## VARIATION OF GEOTHERMAL EXPLORATION LICENCES GELs 316, 317, 318, 319, 320, 322, 323 and 324

I, BARRY A. GOLDSTEIN, Director Petroleum and Geothermal, Minerals and Energy Resources, Department of Primary Industries and Resources in the State of South Australia, pursuant to section 25 of the *Petroleum and Geothermal Energy Act 2000* and all other enabling powers, for and on behalf of Paul Holloway, Minister for Mineral Resources Development (Minister), pursuant to delegated powers dated 1 October 2009 vary the conditions of the above-mentioned licences, held by -

### **Clean Energy Australasia Pty Ltd**

ACN 122 645 229

Condition 1 of the licence is omitted and the following substituted:

“ During the term of the licence, the Licensee shall carry out or cause to be carried out, exploratory operations on the area comprised in the licence in accordance with such work programs as are approved by the Minister from time to time. Year one exploratory operations are guaranteed, and any subsequent licence year work program becomes guaranteed upon entry into any such licence year. These exploratory operations shall include but not necessarily be limited to:-

<b>Year of Term of Licence</b>	<b>Minimum Work Requirements</b> <i>(Years one to five work requirements may be conducted anywhere within the combined areas of GELs 316, 317, 318, 319, 320, 322, 323 and 324).</i>
<b>One</b>	<ul style="list-style-type: none"><li>• Geological and geophysical review.</li></ul>
<b>Two</b>	<ul style="list-style-type: none"><li>• Geological and geophysical review.</li></ul>
<b>Three</b>	<ul style="list-style-type: none"><li>• Geological and geophysical review.</li></ul>
<b>Four</b>	<ul style="list-style-type: none"><li>• Geological and geophysical review.</li></ul>
<b>Five</b>	<ul style="list-style-type: none"><li>• Drill 1 deep well (approximately 3,000-4,000m).</li></ul>

”

Dated: 28 May 2010



**BARRY A. GOLDSTEIN**  
**Director Petroleum and Geothermal**  
**Minerals and Energy Resources**  
**Primary Industries and Resources SA**  
**Delegate of the Minister for Mineral Resources Development**

## PETROLEUM ACT 2000

## CORRIGENDUM

THE following notice replaces that published on page 1862, *Gazette* No. 29 dated 5 June 2008:

## GRANT OF GEOTHERMAL EXPLORATION LICENCES

Notice is hereby given that the undermentioned Geothermal Exploration Licences have been granted with effect from and including 2 June 2008, under the provisions of the Petroleum Act 2000, pursuant to delegated powers dated 28 March 2002, *Gazetted* 11 April 2002, page 1573.

No. of Licence	Licensee	Locality	Date of Expiry	Reference
GEL 316	Clean Energy Australasia Pty Ltd	Cooper Basin, South Australia	1 June 2013	27/2/489
GEL 317	Clean Energy Australasia Pty Ltd	Cooper Basin, South Australia	1 June 2013	27/2/489
GEL 318	Clean Energy Australasia Pty Ltd	Cooper Basin, South Australia	1 June 2013	27/2/489
GEL 319	Clean Energy Australasia Pty Ltd	Cooper Basin, South Australia	1 June 2013	27/2/489
GEL 320	Clean Energy Australasia Pty Ltd	Cooper Basin, South Australia	1 June 2013	27/2/489
GEL 322	Clean Energy Australasia Pty Ltd	Cooper Basin, South Australia	1 June 2013	27/2/489
GEL 323	Clean Energy Australasia Pty Ltd	Cooper Basin, South Australia	1 June 2013	27/2/489
GEL 324	Clean Energy Australasia Pty Ltd	Cooper Basin, South Australia	1 June 2013	27/2/525
GEL 390	Clean Energy Australasia Pty Ltd	Cooper Basin, South Australia	1 June 2013	27/2/525
GEL 391	Clean Energy Australasia Pty Ltd	Cooper Basin, South Australia	1 June 2013	27/2/525
GEL 392	Clean Energy Australasia Pty Ltd	Cooper Basin, South Australia	1 June 2013	27/2/525

*Description of Area—GEL 316*

All that part of the State of South Australia, bounded as follows:

Commencing at a point being the intersection of latitude 27°19'00"S GDA94 and longitude 140°47'00"E GDA94, thence east to longitude 140°52'00"E GDA94, south to latitude 27°22'00"S GDA94, east to longitude 140°53'00"E GDA94, south to latitude 27°23'00"S GDA94, east to the eastern border of the State of South Australia, thence southerly along the border of the said State to latitude 27°35'00"S GDA94, west to longitude 140°50'00"E GDA94, north to latitude 27°33'00"S GDA94, west to longitude 140°49'30"E GDA94, north to latitude 27°30'00"S GDA94, west to longitude 140°47'00"E GDA94 and north to point of commencement.

Area: 496 km<sup>2</sup> approximately.

*Description of Area—GEL 317*

All that part of the State of South Australia, bounded as follows:

Commencing at a point being the intersection of latitude 28°19'00"S GDA94 and longitude 140°41'00"E GDA94, thence east to longitude 140°45'00"E GDA94, south to latitude 28°30'00"S GDA94, east to longitude 140°51'00"E GDA94, north to latitude 28°20'00"S GDA94, east to longitude 140°56'00"E GDA94, south to latitude 28°25'00"S GDA94, east to longitude 140°57'00"E GDA94, south to latitude 28°26'00"S GDA94, east to the eastern border of the State of South Australia, thence southerly along the border of the said State to latitude 28°32'00"S GDA94, west to longitude 140°57'00"E GDA94, south to latitude 28°33'00"S GDA94, west to longitude 140°41'00"E GDA94 and north to point of commencement.

Area: 496 km<sup>2</sup> approximately.

*Description of Area—GEL 318*

All that part of the State of South Australia, bounded as follows:

Commencing at a point being the intersection of latitude 28°19'00"S GDA94 and longitude 140°33'00"E GDA94, thence east to longitude 140°41'00"E GDA94, south to latitude 28°40'00"S GDA94, west to longitude 140°35'00"E GDA94, north to latitude 28°39'00"S GDA94, west to longitude 140°34'00"E GDA94, north to latitude 28°38'00"S GDA94, west to longitude 140°33'00"E GDA94 and north to the point of commencement.

Area: 497 km<sup>2</sup> approximately.

*Description of Area—GEL 319*

All that part of the State of South Australia, bounded as follows:

Commencing at a point being the intersection of latitude 28°24'30"S GDA94 and longitude 140°02'00"E GDA94, thence east to longitude 140°27'00"E GDA94, south to latitude 28°28'00"S GDA94, west to longitude 140°14'00"E GDA94, south to latitude 28°32'00"S GDA94, west to longitude 140°08'00"E GDA94, south to latitude 28°33'00"S GDA94, west to longitude 139°57'00"E GDA94, north to latitude 28°31'00"S GDA94, east to longitude 139°57'30"E GDA94, north to latitude 28°28'00"S GDA94, east to longitude 140°02'00"E GDA94 and north to the point of commencement.

Area: 497 km<sup>2</sup> approximately.

*Description of Area—GEL 320*

All that part of the State of South Australia, bounded as follows:

Commencing at a point being the intersection of latitude 28°09'00"S GDA94 and longitude 139°47'00"E GDA94, thence east to longitude 140°02'00"E GDA94, south to latitude 28°18'00"S GDA94, west to longitude 139°52'00"E GDA94, south to latitude 28°20'00"S GDA94, west to longitude 139°46'00"E GDA94, north to latitude 28°12'00"S GDA94, east to longitude 139°47'00"E GDA94 and north to the point of commencement.

Area: 462 km<sup>2</sup> approximately.

*Description of Area—GEL 322*

All that part of the State of South Australia, bounded as follows:

Commencing at a point being the intersection of latitude 28°06'00"S GDA94 and longitude 139°35'00"E GDA94, thence east to longitude 139°52'00"E GDA94, south to latitude 28°09'00"S GDA94, west to longitude 139°47'00"E GDA94, south to latitude 28°12'00"S GDA94, west to longitude 139°46'00"E GDA94, south to latitude 28°20'00"S GDA94, west to longitude 139°41'00"E GDA94, north to latitude 28°17'00"S GDA94, west to longitude 139°37'00"E GDA94, north to latitude 28°16'00"S GDA94, west to longitude 139°35'00"E GDA94 and north to the point of commencement.

Area: 468 km<sup>2</sup> approximately.

*Description of Area—GEL 323*

All that part of the State of South Australia, bounded as follows:

Commencing at a point being the intersection of latitude 27°27'00"S GDA94 and longitude 140°16'00"E GDA94, thence east to longitude 140°22'00"E GDA94, south to latitude 27°33'00"S GDA94, east to longitude 140°23'00"E GDA94, south to latitude 27°39'00"S GDA94, west to longitude 140°22'00"E GDA94, south to latitude 27°40'00"S GDA94, west to longitude 140°21'00"E GDA94, south to latitude 27°41'00"S GDA94, west to longitude 140°20'00"E GDA94, south to latitude 27°42'00"S GDA94, west to longitude 140°17'00"E GDA94, south to latitude 27°43'00"S GDA94, west to longitude 140°15'00"E GDA94, south to latitude 27°44'00"S GDA94, west to longitude 140°14'00"E GDA94, south to latitude 27°45'00"S GDA94, west to longitude 140°13'00"E GDA94, north to latitude 27°42'00"S GDA94, west to longitude 140°10'00"E GDA94, north to latitude 27°32'00"S GDA94, east to longitude 140°14'00"E GDA94, north to latitude 27°30'00"S GDA94, east to longitude 140°16'00"E GDA94 and north to the point of commencement.

Area: 498 km<sup>2</sup> approximately.

*Description of Area—GEL 324*

All that part of the State of South Australia, bounded as follows:

Commencing at a point being the intersection of latitude 27°25'00"S GDA94 and longitude 140°39'00"E GDA94, thence east to longitude 140°47'00"E GDA94, south to latitude 27°30'00"S GDA94, west to longitude 140°36'00"E GDA94, south to latitude 27°31'00"S GDA94, west to longitude 140°35'00"E GDA94, south to latitude 27°37'00"S GDA94, west to longitude 140°33'00"E GDA94, south to latitude 27°38'00"S GDA94, west to longitude 140°23'00"E GDA94, north to latitude 27°33'00"S GDA94, west to longitude 140°22'00"E GDA94, north to latitude 27°29'00"S GDA94, east to longitude 140°35'00"E GDA94, north to latitude 27°27'00"S GDA94, east to longitude 140°38'00"E GDA94, north to latitude 27°26'00"S GDA94, east to longitude 140°39'00"E GDA94 and north to the point of commencement.

Area: 498 km<sup>2</sup> approximately.

*Description of Area—GEL 390*

All that part of the State of South Australia, bounded as follows:

Commencing at a point being the intersection of latitude 27°49'00"S GDA94 and longitude 139°16'00"E GDA94, thence east to longitude 139°30'00"E GDA94, south to latitude 27°57'00"S GDA94, west to longitude 139°25'00"E GDA94, south to latitude 28°00'00"S GDA94, west to longitude 139°18'00"E GDA94, north to latitude 27°59'00"S GDA94, west to longitude 139°13'00"E GDA94, north to latitude 27°50'00"S GDA94, east to longitude 139°16'00"E GDA94 and north to the point of commencement.

Area: 497 km<sup>2</sup> approximately.

*Description of Area—GEL 391*

All that part of the State of South Australia, bounded as follows:

Commencing at a point being the intersection of latitude 27°49'00"S GDA94 and longitude 139°30'00"E GDA94, thence east to longitude 139°42'00"E GDA94, south to latitude 28°00'00"S GDA94, west to longitude 139°36'00"E GDA94, south to latitude 28°05'00"S AGD66, west to longitude 139°29'00"E GDA94, north to latitude 28°03'00"S GDA94, east to longitude 139°30'00"E GDA94 and north to the point of commencement.

Area: 495 km<sup>2</sup> approximately.

*Description of Area—GEL 392*

All that part of the State of South Australia, bounded as follows:

Commencing at a point being the intersection of latitude 27°57'00"S GDA94 and longitude 139°25'00"E GDA94, thence east to longitude 139°30'00"E GDA94, south to latitude 28°03'00"S GDA94, west to longitude 139°29'00"E GDA94, south to latitude 28°05'00"S AGD66, west to longitude 139°25'00"E AGD66, south to latitude 28°10'00"S GDA94, west to longitude 139°13'00"E GDA94, north to latitude 27°59'00"S GDA94, east to longitude 139°18'00"E GDA94, south to latitude 28°00'00"S GDA94, east to longitude 139°25'00"E GDA94 and north to the point of commencement.

Area: 493 km<sup>2</sup> approximately.

Dated 10 June 2008.

M. MALAVAZOS, Acting Director Petroleum and Geothermal  
Minerals and Energy Resources  
Primary Industries and Resources SA  
Delegate of the Minister for Mineral Resources Development

## PETROLEUM ACT 2000

*Grant of Geothermal Exploration Licences*

NOTICE is hereby given that the undermentioned Geothermal Exploration Licences have been granted with effect from and including 24 January 2007, under the provisions of the Petroleum Act 2000, pursuant to delegated powers dated 28 March 2002, *Gazetted* 11 April 2002, page 1573.

No. of Licence	Licensee	Locality	Date of Expiry	Reference
GEL 316	Clean Energy Australasia Pty Ltd	Cooper Basin, South Australia	1 June 2013	27/2/489
GEL 317	Clean Energy Australasia Pty Ltd	Cooper Basin, South Australia	1 June 2013	27/2/489
GEL 318	Clean Energy Australasia Pty Ltd	Cooper Basin, South Australia	1 June 2013	27/2/489
GEL 319	Clean Energy Australasia Pty Ltd	Cooper Basin, South Australia	1 June 2013	27/2/489
GEL 320	Clean Energy Australasia Pty Ltd	Cooper Basin, South Australia	1 June 2013	27/2/489
GEL 322	Clean Energy Australasia Pty Ltd	Cooper Basin, South Australia	1 June 2013	27/2/489
GEL 323	Clean Energy Australasia Pty Ltd	Cooper Basin, South Australia	1 June 2013	27/2/489
GEL 324	Clean Energy Australasia Pty Ltd	Cooper Basin, South Australia	1 June 2013	27/2/525
GEL 390	Clean Energy Australasia Pty Ltd	Cooper Basin, South Australia	1 June 2013	27/2/525
GEL 391	Clean Energy Australasia Pty Ltd	Cooper Basin, South Australia	1 June 2013	27/2/525
GEL 392	Clean Energy Australasia Pty Ltd	Cooper Basin, South Australia	1 June 2013	27/2/525

*Description of Area—GEL 316*

All that part of the State of South Australia, bounded as follows:

Commencing at a point being the intersection of latitude 27°19'00"S GDA94 and longitude 140°47'00"E GDA94, thence east to longitude 140°52'00"E GDA94, south to latitude 27°22'00"S GDA94, east to longitude 140°53'00"E GDA94, south to latitude 27°23'00"S GDA94, east to the eastern border of the State of South Australia, thence southerly along the border of the said State to latitude 27°35'00"S GDA94, west to longitude 140°50'00"E GDA94, north to latitude 27°33'00"S GDA94, west to longitude 140°49'30"E GDA94, north to latitude 27°30'00"S GDA94, west to longitude 140°47'00"E GDA94 and north to point of commencement.

Area: 496 km<sup>2</sup> approximately.

*Description of Area—GEL 317*

All that part of the State of South Australia, bounded as follows:

Commencing at a point being the intersection of latitude 28°19'00"S GDA94 and longitude 140°41'00"E GDA94, thence east to longitude 140°45'00"E GDA94, south to latitude 28°30'00"S GDA94, east to longitude 140°51'00"E GDA94, north to latitude 28°20'00"S GDA94, east to longitude 140°56'00"E GDA94, south to latitude 28°25'00"S GDA94, east to longitude 140°57'00"E GDA94, south to latitude 28°26'00"S GDA94, east to the eastern border of the State of South Australia, thence southerly along the border of the said State to latitude 28°32'00"S GDA94, west to longitude 140°57'00"E GDA94, south to latitude 28°33'00"S GDA94, west to longitude 140°41'00"E GDA94 and north to point of commencement.

Area: 496 km<sup>2</sup> approximately.

*Description of Area—GEL 318*

All that part of the State of South Australia, bounded as follows:

Commencing at a point being the intersection of latitude 28°19'00"S GDA94 and longitude 140°33'00"E GDA94, thence east to longitude 140°41'00"E GDA94, south to latitude 28°40'00"S GDA94, west to longitude 140°35'00"E GDA94, north to latitude 28°39'00"S GDA94, west to longitude 140°34'00"E GDA94, north to latitude 28°38'00"S GDA94, west to longitude 140°33'00"E GDA94 and north to the point of commencement.

Area: 497 km<sup>2</sup> approximately.

*Description of Area—GEL 319*

All that part of the State of South Australia, bounded as follows:

Commencing at a point being the intersection of latitude 28°24'30"S GDA94 and longitude 140°02'00"E GDA94, thence east to longitude 140°27'00"E GDA94, south to latitude 28°28'00"S GDA94, west to longitude 140°14'00"E GDA94, south to latitude 28°32'00"S GDA94, west to longitude 140°08'00"E GDA94, south to latitude 28°33'00"S GDA94, west to longitude 139°57'00"E GDA94, north to latitude 28°31'00"S GDA94, east to longitude 139°57'30"E GDA94, north to latitude 28°28'00"S GDA94, east to longitude 140°02'00"E GDA94 and north to the point of commencement.

Area: 497 km<sup>2</sup> approximately.

*Description of Area—GEL 320*

All that part of the State of South Australia, bounded as follows:

Commencing at a point being the intersection of latitude 28°09'00"S GDA94 and longitude 139°47'00"E GDA94, thence east to longitude 140°02'00"E GDA94, south to latitude 28°18'00"S GDA94, west to longitude 139°52'00"E GDA94, south to latitude 28°20'00"S GDA94, west to longitude 139°46'00"E GDA94, north to latitude 28°12'00"S GDA94, east to longitude 139°47'00"E GDA94 and north to the point of commencement.

Area: 462 km<sup>2</sup> approximately.

*Description of Area—GEL 322*

All that part of the State of South Australia, bounded as follows:

Commencing at a point being the intersection of latitude 28°06'00"S GDA94 and longitude 139°35'00"E GDA94, thence east to longitude 139°52'00"E GDA94, south to latitude 28°09'00"S GDA94, west to longitude 139°47'00"E GDA94, south to latitude 28°12'00"S GDA94, west to longitude 139°46'00"E GDA94, south to latitude 28°20'00"S GDA94, west to longitude 139°41'00"E GDA94, north to latitude 28°17'00"S GDA94, west to longitude 139°37'00"E GDA94, north to latitude 28°16'00"S GDA94, west to longitude 139°35'00"E GDA94 and north to the point of commencement.

Area: 468 km<sup>2</sup> approximately.

*Description of Area—GEL 323*

All that part of the State of South Australia, bounded as follows:

Commencing at a point being the intersection of latitude 27°27'00"S GDA94 and longitude 140°16'00"E GDA94, thence east to longitude 140°22'00"E GDA94, south to latitude 27°33'00"S GDA94, east to longitude 140°23'00"E GDA94, south to latitude 27°39'00"S GDA94, west to longitude 140°22'00"E GDA94, south to latitude 27°40'00"S GDA94, west to longitude 140°21'00"E GDA94, south to latitude 27°41'00"S GDA94, west to longitude 140°20'00"E GDA94, south to latitude 27°42'00"S GDA94, west to longitude 140°17'00"E GDA94, south to latitude 27°43'00"S GDA94, west to longitude 140°15'00"E GDA94, south to latitude 27°44'00"S GDA94, west to longitude 140°14'00"E GDA94, south to latitude 27°45'00"S GDA94, west to longitude 140°13'00"E GDA94, north to latitude 27°42'00"S GDA94, west to longitude 140°10'00"E GDA94, north to latitude 27°32'00"S GDA94, east to longitude 140°14'00"E GDA94, north to latitude 27°30'00"S GDA94, east to longitude 140°16'00"E GDA94 and north to the point of commencement.

Area: 498 km<sup>2</sup> approximately.

*Description of Area—GEL 324*

All that part of the State of South Australia, bounded as follows:

Commencing at a point being the intersection of latitude 27°25'00"S GDA94 and longitude 140°39'00"E GDA94, thence east to longitude 140°47'00"E GDA94, south to latitude 27°30'00"S GDA94, west to longitude 140°36'00"E GDA94, south to latitude 27°31'00"S GDA94, west to longitude 140°35'00"E GDA94, south to latitude 27°37'00"S GDA94, west to longitude 140°33'00"E GDA94, south to latitude 27°38'00"S GDA94, west to longitude 140°23'00"E GDA94, north to latitude 27°33'00"S GDA94, west to longitude 140°22'00"E GDA94, north to latitude 27°29'00"S GDA94, east to longitude 140°35'00"E GDA94, north to latitude 27°27'00"S GDA94, east to longitude 140°38'00"E GDA94, north to latitude 27°26'00"S GDA94, east to longitude 140°39'00"E GDA94 and north to the point of commencement.

Area: 498 km<sup>2</sup> approximately.

*Description of Area—GEL 390*

All that part of the State of South Australia, bounded as follows:

Commencing at a point being the intersection of latitude 27°49'00"S GDA94 and longitude 139°16'00"E GDA94, thence east to longitude 139°30'00"E GDA94, south to latitude 27°57'00"S GDA94, west to longitude 139°25'00"E GDA94, south to latitude 28°00'00"S GDA94, west to longitude 139°18'00"E GDA94, north to latitude 27°59'00"S GDA94, west to longitude 139°13'00"E GDA94, north to latitude 27°50'00"S GDA94, east to longitude 139°16'00"E GDA94 and north to the point of commencement.

Area: 497 km<sup>2</sup> approximately.

*Description of Area—GEL 391*

All that part of the State of South Australia, bounded as follows:

Commencing at a point being the intersection of latitude 27°49'00"S GDA94 and longitude 139°30'00"E GDA94, thence east to longitude 139°42'00"E GDA94, south to latitude 28°00'00"S GDA94, west to longitude 139°36'00"E GDA94, south to latitude 28°05'00"S AGD66, west to longitude 139°29'00"E GDA94, north to latitude 28°03'00"S GDA94, east to longitude 139°30'00"E GDA94 and north to the point of commencement.

Area: 495 km<sup>2</sup> approximately.

*Description of Area—GEL 392*

All that part of the State of South Australia, bounded as follows:

Commencing at a point being the intersection of latitude 27°57'00"S GDA94 and longitude 139°25'00"E GDA94, thence east to longitude 139°30'00"E GDA94, south to latitude 28°03'00"S GDA94, west to longitude 139°29'00"E GDA94, south to latitude 28°05'00"S AGD66, west to longitude 139°25'00"E AGD66, south to latitude 28°10'00"S GDA94, west to longitude 139°13'00"E GDA94, north to latitude 27°59'00"S GDA94, east to longitude 139°18'00"E GDA94, south to latitude 28°00'00"S GDA94, east to longitude 139°25'00"E GDA94 and north to the point of commencement.

Area: 493 km<sup>2</sup> approximately.

Dated 2 June 2008.

B. A. GOLDSTEIN, Director Petroleum and Geothermal  
Minerals and Energy Resources  
Primary Industries and Resources SA  
Delegate of the Minister for Mineral Resources Development

**Petroleum Act 2000  
S.115**

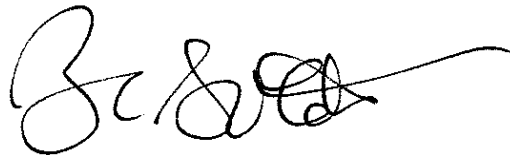
**MEMORANDUM**

**GEOHERMAL EXPLORATION LICENCES  
GELs 316, 317, 318, 319, 320, 322, 323, 324, 390, 391 and 392**

1. These Licences granted with effect from and including 2 June 2008 are hereby entered on the public register.

2. Interests in the licences are:-

Clean Energy Australasia Pty Ltd	100%
----------------------------------	------



**BARRY A. GOLDSTEIN  
Director Petroleum and Geothermal  
Minerals and Energy Resources  
Primary Industries and Resources SA  
Delegate of the Minister for Mineral Resources  
Development**

Date: 2 June 2008

Ref: 27/2/489  
27/2/525

# PETROLEUM ACT 2000

## GEOHERMAL EXPLORATION LICENCE

### GEL 323

I, BARRY ALAN GOLDSTEIN, Director Petroleum and Geothermal, Minerals and Energy Resources, Primary Industries and Resources, in the State of South Australia pursuant to the provisions of the *Petroleum Act 2000* and all other enabling powers, for and on behalf of Paul Holloway, Minister for Mineral Resources Development (Minister), pursuant to delegation dated 28 March 2002, (refer Government Gazette dated 11 April 2002 page 1573), HEREBY GRANT to:

#### Clean Energy Australasia Pty Ltd ACN 122 645 229

(hereinafter referred to as the Licensee) an Exploration Licence in relation to a source of geothermal energy in respect of the area set out below, to have effect for a period of five years and to expire on 1 June 2013 but carrying the right of renewal under the *Petroleum Act 2000*.

#### DESCRIPTION OF AREA

The land comprised in this licence is that part of the State of South Australia described in the Schedule hereto:

#### CONDITIONS

1. During the term of the licence, the Licensee shall carry out or cause to be carried out, exploratory operations on the area comprised in the licence in accordance with such work programs as are approved by the Minister from time to time. Year one exploratory operations are guaranteed, and any subsequent licence year work program becomes guaranteed upon entry into any such licence year. These exploratory operations shall include but not necessarily be limited to:-

Year of Term of Licence	Minimum Work Requirements <i>(Years one to five work requirements may be conducted anywhere within the combined areas of GELs 316, 317, 318, 319, 320, 322, 323 and 324).</i>
One	<ul style="list-style-type: none"><li>• Geological and geophysical review.</li></ul>
Two	<ul style="list-style-type: none"><li>• Geological and geophysical review.</li></ul>
Three	<ul style="list-style-type: none"><li>• Geological and geophysical review.</li><li>• Measurement of detailed geothermal gradients in accessible well(s)</li><li>• Design and plan a demonstration heat exchange plant.</li><li>• Commence/reprocess infill seismic, gravity and magnetic data (as required).</li></ul>
Four	<ul style="list-style-type: none"><li>• Conduct shallow pilot drilling and measure detailed geothermal gradients; and/or re-enter and deepen existing well(s) and measure detailed geothermal gradients.</li><li>• Conduct heat exchange trial.</li><li>• Conduct/reprocess infill seismic, gravity and magnetic data (as required).</li><li>• Geological and geophysical review.</li></ul>

<b>Five</b>	<ul style="list-style-type: none"> <li>• Drill 1 deep well (3,000-4,000m) and/or deepen existing wells.</li> <li>• Conduct heat exchange and power generation trial.</li> <li>• Geological and geophysical review.</li> </ul>
-------------	---

2. The Licensee must take all reasonable precautions to minimise the risks of its activities resulting in a significant loss of petroleum reserves or a significant reduction in the recovery of petroleum reserves.
3. The Licensee must:
  - (a) upon commencement of regulated activities under this licence, maintain in force during the term of this licence public liability insurance to cover regulated activities under this licence (including sudden and accidental pollution) in the name of the Licensee for a sum not less than twenty million dollars (\$20,000,000.00) or such greater sum as specified by the Minister and make such amendments to the terms and conditions of the insurance as the Minister may from time to time require;
  - (b) maintain in force during the drilling of any well or operation in any well, control of well insurance in the name of the Licensee for a sum not less than ten million dollars (\$10,000,000.00) or such greater sum as specified by the Minister and make such amendments to the terms and conditions of the insurance as the Minister may from time to time require;
  - (c) upon request by the Minister, provide the Minister with a cover note or certificate of currency of each insurance policy referred to in paragraphs (a) and (b)
4. The Minister in specifying the levels of insurance accepts no liability for the completeness of their listing, the adequacy of the sum insured, the limit of liability, the scoped coverage, the conditions or exclusions of these insurances in respect to how they may or may not respond to any loss, damage or liability.
5. The Licensee will ensure, when preparing an Environmental Impact Report under Part 12 of the *Petroleum Act 2000*, that the report also includes an assessment of the potential economic consequences for other licensees under the *Petroleum Act 2000* or *Mining Act 1971* and owners of land, arising out of proposed regulated activities to be carried out in the licence area.
6. The Licensee must keep confidential any measurements made in a well which would enable the estimation of petroleum reserves ("Confidential Information") and must not disclose the Confidential Information without first obtaining the written consent of the licensee of the overlapping compatible licence, unless:
  - (a) it is a disclosure required under the Act, this licence or any other law;
  - (b) it is a disclosure which is for the purposes of prosecuting or defending any legal proceedings; or
  - (c) it is information which is or becomes public knowledge other than by breach of this licence condition.
7. A contract or agreement entered into by the licensee to transfer or accept liability for any well or facility constructed for the purpose of undertaking a regulated activity under the *Petroleum Act 1940* or *2000* cannot transfer, limit or exclude liability under the *Petroleum Act 2000* unless written consent of the Minister is obtained.
8. In the event that the Licensee during any year of the term of this licence (a year being the period of twelve calendar months ending on the anniversary of the date upon

which the licence comes into force) fails to comply with the work program requirements of this licence, it is an express term of this licence that the Minister then may use discretion to either cancel this licence or authorise such variation to these requirements as the Minister thinks fit

9. The Licensee shall during periods determined by the Minister, lodge and maintain with the Minister, for the satisfaction of obligations arising under the Act or this licence, a security of \$50,000 (fifty thousand dollars) or such greater sum as specified by the Minister from time to time

("the Security").

9.1 The Security shall be lodged in the form of either;

- (a) cash; or
- (b) an unconditional, irrevocable bank guarantee or letter of credit in a form, and from a financial institution, approved by the Minister,

9.2 Interest will not be payable by the Minister to the Licensee on any cash Security.

9.3 All charges incurred by the Licensee in obtaining and maintaining the Security, shall be met by the Licensee.

9.4 If upon expiry, this Licence is not renewed and the Minister is satisfied that there are no further obligations under this Licence or the Act, the Minister will return the Security to the Licensee.

Date: 2 June 2008



.....  
**BARRY A. GOLDSTEIN**  
**Director Petroleum and Geothermal**  
**Minerals and Energy Resources**  
**Primary Industries and Resources SA**  
**Delegate of the Minister for Mineral Resources Development**

**Signed by the said LICENSEE**

Date: 16th May ..... 2008

Authorised Representative

JOE REICHMAN  
Name

MANAGING DIRECTOR  
Position

CLEAN ENERGY AUSTRALASIA  
Company

# GEOTHERMAL EXPLORATION LICENCE

## GEL 323

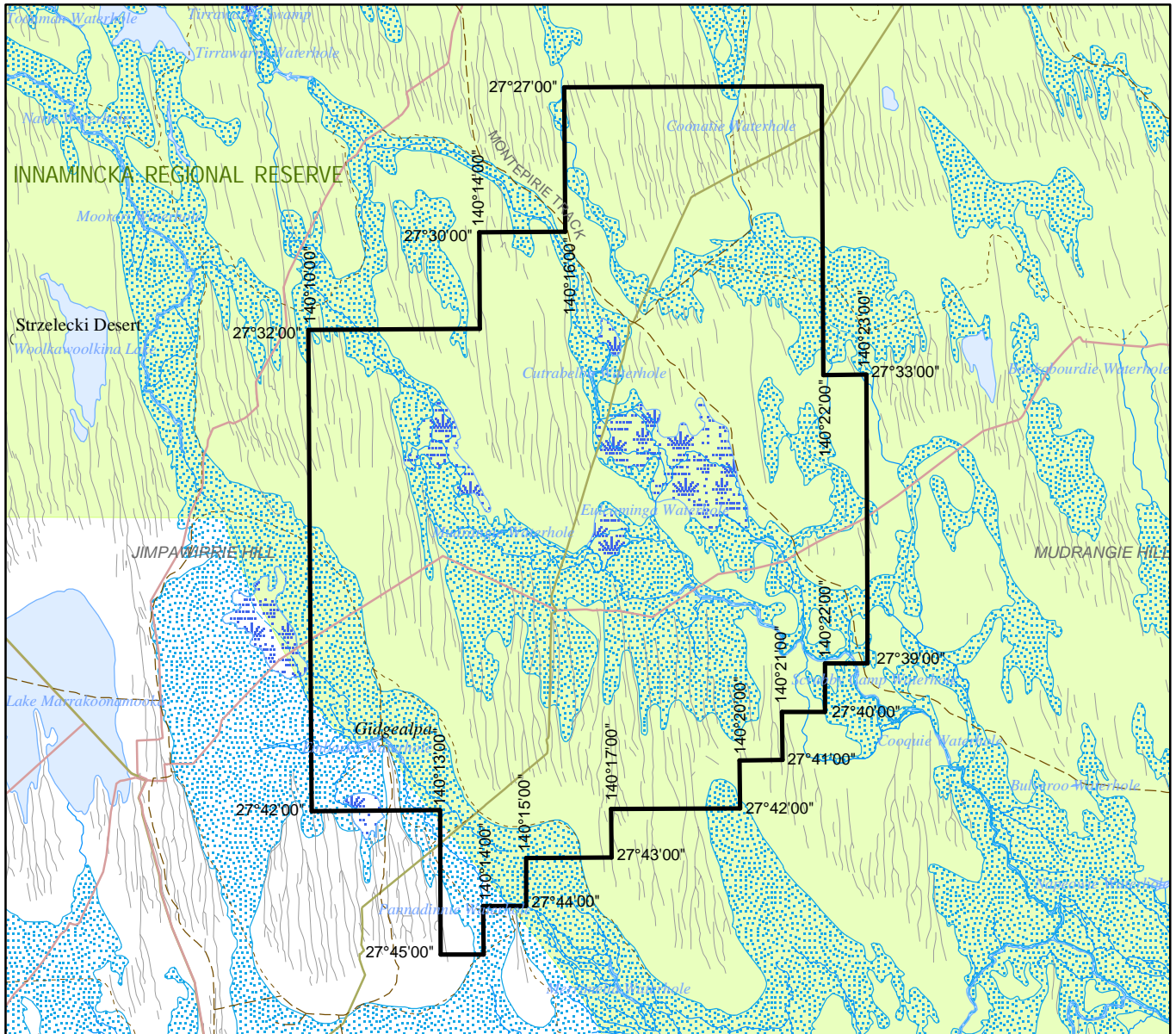
### THE SCHEDULE

#### Description of Area

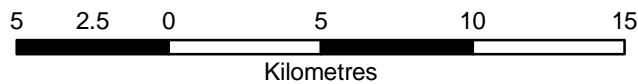
All that part of the State of South Australia, bounded as follows:-

Commencing at a point being the intersection of latitude 27°27'00"S GDA94 and longitude 140°16'00"E GDA94, thence east to longitude 140°22'00"E GDA94, south to latitude 27°33'00"S GDA94, east to longitude 140°23'00"E GDA94, south to latitude 27°39'00"S GDA94, west to longitude 140°22'00"E GDA94, south to latitude 27°40'00"S GDA94, west to longitude 140°21'00"E GDA94, south to latitude 27°41'00"S GDA94, west to longitude 140°20'00"E GDA94, south to latitude 27°42'00"S GDA94, west to longitude 140°17'00"E GDA94, south to latitude 27°43'00"S GDA94, west to longitude 140°15'00"E GDA94, south to latitude 27°44'00"S GDA94, west to longitude 140°14'00"E GDA94, south to latitude 27°45'00"S GDA94, west to longitude 140°13'00"E GDA94, north to latitude 27°42'00"S GDA94, west to longitude 140°10'00"E GDA94, north to latitude 27°32'00"S GDA94, east to longitude 140°14'00"E GDA94, north to latitude 27°30'00"S GDA94, east to longitude 140°16'00"E GDA94, and north to the point of commencement.

AREA: **498** square kilometres approximately.



SCALE 1:250 000



Note: There is no warranty that the boundary of this licence is correct in relation to other features of the map. The boundary is to be ascertained by reference to the Geocentric Datum of Australia (GDA94) and the schedule.

THE PLAN HEREINBEFORE REFERRED TO

**GEOHERMAL EXPLORATION LICENCE NO: 323**



Government of South Australia  
Primary Industries and Resources SA

SR 27/2/489g

AREA: 498 sq km (approx)