

PACE Northern Olympic Domain gravity survey (with infill data)

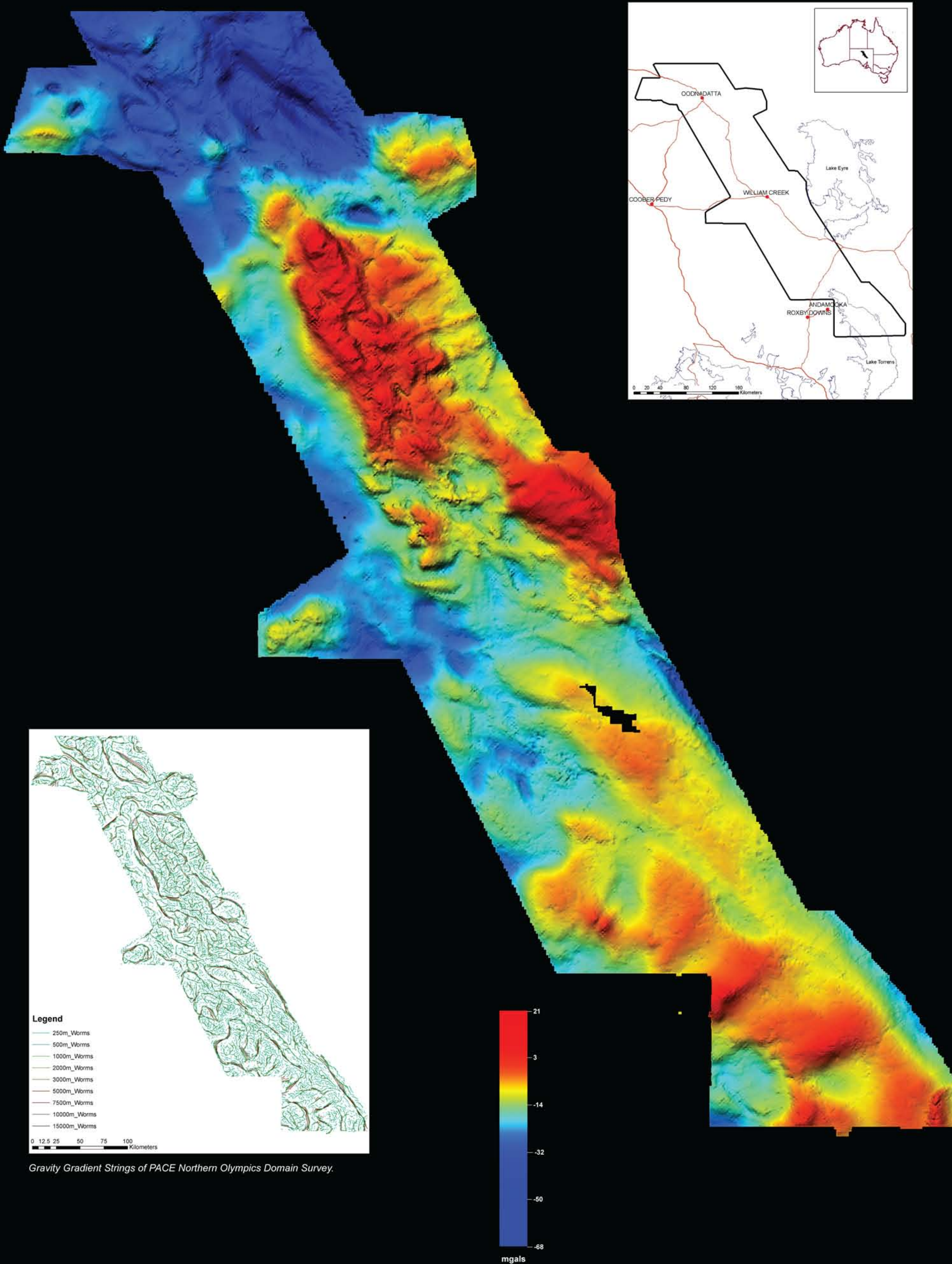
The **PACE** Northern Olympic Domain Gravity (NOD) survey consists of 39 446 new station readings plus 5 percent repeats for quality control. The survey covers approximately 45 000 km² with stations spaced at 750 m by 750 m offset (one of the largest ever undertaken in the southern hemisphere).

Atlas Geophysics was contracted to acquire the data for Primary Industries and Resources South Australia, using two Robinson R44 helicopters.

Acquisition of the data commenced on the 16th of May 2007 and finished on the 22nd of September 2007.

The data package was released in December of 2008.

This survey was acquired with the cooperation of Barrick Gold of Australia Limited, Copper Range Limited and Carbon Energy Limited.



PACE

plan for accelerating exploration

HOT PROSPECTS



Government of South Australia
Primary Industries and Resources SA

www.minerals.pir.sa.gov.au