



The Community Capacity Assessment (CCA) Tool

South Australian rural communities expressed their interest in better understanding their community's social capacity and capability. They emphasised the difficulties with the ever-increasing requirement by some sectors, government departments and funding bodies for communities to quantify, measure, monitor and develop their social capacity. This led Primary Industries and Resources South Australia (PIRSA) to embark on developing an instrument that communities could use to measure their capacity to support and develop locally based initiatives.

Community Capacity Assessment (CCA) is a tool and a process developed by PIRSA in partnership with rural communities to assist a community better understand its ability to achieve identified targets.

The CCA benchmarks and measures a community's capacity so they can build capacity to meet the challenges of competitive markets and strong regional economies. If a community, sector or industry is to realise its potential there must be an appropriate mix of and an adequate level of social capacity within that community.

The CCA is the property of the South Australian Government administered by Rural Affairs, PIRSA who commissioned developmental expertise from Rural Solutions South Australia and University SA. Rural Affairs coordinates the facilitator training and communities may employ trained private facilitators to administer the on ground CCA process. Rural Affairs, PIRSA is the ongoing contact for the facilitator and the community, which has undertaken the Assessment and is the conduit for communities requiring amalgamation of information.

Rural Affairs is the coordinating group for the CCA Panel and the CCA Steering Committee and coordinates the Data Analysis Sub Committee and provides the Community Summary Reports.

Objectives

The Community Capacity Assessment will:

- Enable a greater understanding of the needs and barriers of communities' capacity to be innovative and opportunistic.
- Establish base-line social capacity data.
- Measure strengths and weaknesses of the capacity of a particular community/industry.
- Provide the community with access to capacity building knowledge and tools.
- Determine what specific capacity or suites of capacities are required for a community to achieve specific outcomes.
- Determine social capacity areas of focus so a community can achieve its goals.

Nature and Scope

The CCA addresses 17 capacities with up to 51 indicators in 8 sectors of the community to determine the community's social capacity. While more specific assessments may need to be undertaken the CCA underpins the more specific specialised assessments and indicates the positioning of a sector or an industry within the broader community framework.

The CCA process will also have the capability to amalgamate data enabling access to varying regional clusters of information such as Local Government Areas, Catchment Regions or Departmental Regions.

The assessments are computer driven and user friendly. The CCA is in the final development stage and Industry, Sector and Community Response assessment tools are about to be initiated.

Time Frame

The process from start to finish will take approximately three to five weeks from when the initial Community Capacity Assessment Group meets to delivery of the final Community Report. This will depend in part on whether the Assessment Data can be collected in one meeting or two and on the availability of the Data Analysis Sub Committee.

Summary Reports

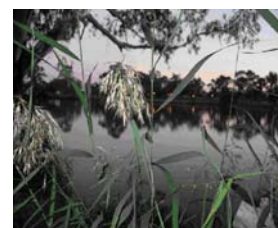
The Community Summary Report includes information about the overall capacity of the community and specific information about the capacities within each of the 8 sectors, sector linkages, capacity linkages, key findings and key recommendations.

The report will benchmark community capacity, help communities understand their strengths and weaknesses, help direct resources for decision making, investment, change management and development. Communities will be better equipped to develop community projects and initiate linkages with other sectors or industries in the community.

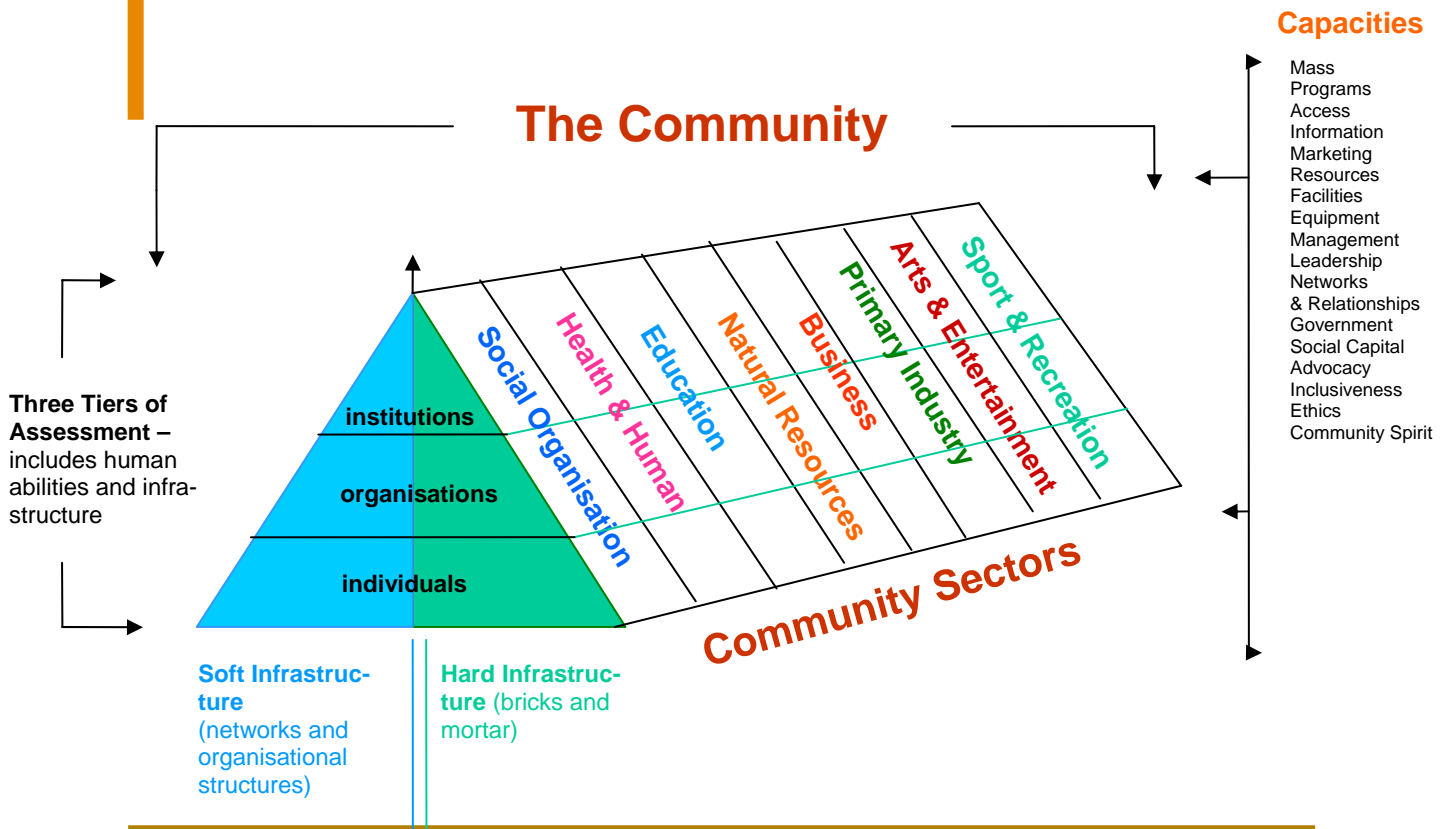
Completion of a CCA will assist in community planning and help focus future investment of time and energy.

Lib Hylton Keele
Manager, Rural Affairs
PIRSA
m 0401122067

July 2007



Community Capacity Assessment Model



CCA Screen face

PRIMARY INDUSTRY SECTOR

test

This page last updated: 7/03/2007 12:58:53 PM

Primary Industry Sector: All people, enterprises and organisations involved in primary production - agriculture, horticulture, viticulture, aquaculture, fishing, mining and forestry.

Leadership is the ability of an individual to influence, motivate and enable others to contribute toward the effectiveness and success of the organisation/sector/ community. A leader engages with others providing guidance, direction, inspiration and enthusiasm.

There is leadership in the Primary Industry Sector.

Strongly Disagree Disagree Agree Strongly Agree not entered

Indicators

	Strong	Weak	Irrelevant	n/e
Vision	<input type="radio"/>	<input checked="" type="radio"/>	<input type="radio"/>	<input type="radio"/>
Drive and energy	<input type="radio"/>	<input checked="" type="radio"/>	<input type="radio"/>	<input type="radio"/>
Engagement	<input type="radio"/>	<input checked="" type="radio"/>	<input type="radio"/>	<input type="radio"/>
Succession	<input checked="" type="radio"/>	<input type="radio"/>	<input type="radio"/>	<input type="radio"/>

Additional Comments: (no more than 5 brief dot-points)

CONFIDENCE LEVEL

How confident are you in this assessment?

- Extremely Confident
 Confident
 Some Confidence
 Not Confident
 not entered

IMPORTANCE

How important is this capacity in auditing your community's total capacity?

- Extremely Important
 Important
 Minor Importance
 Not Important
 not entered

Show Results



Next



Sector data is locked

For more information contact:

Lib Hylton Keele, PIRSA, GPO Box 1671, Adelaide SA 5001, ph: 08 8226 0245 mobile: 0401 122067



Government of South Australia
Primary Industries and Resources SA