

Figure 4. At Acrasia 1 grid reference (temporary stake) looking north. *Sarcostemma australe* (large plants) and mitchell grass on silcrete crest.

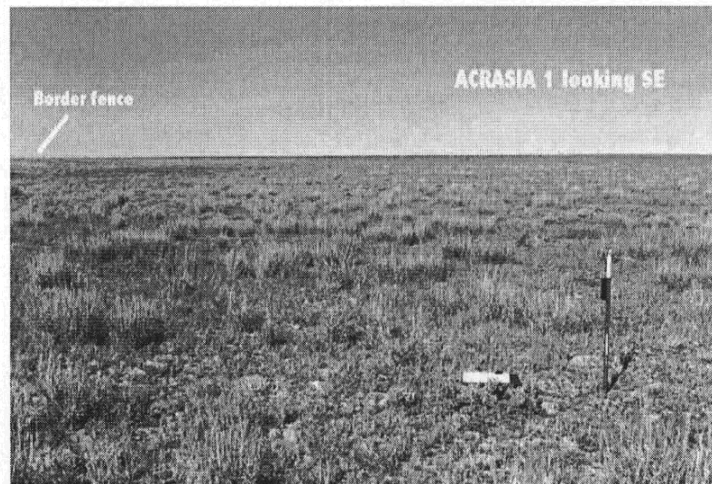


Figure 5. Acrasia 1 looking southeast. Level gibber with mitchell grass and *Sarcostemma*.

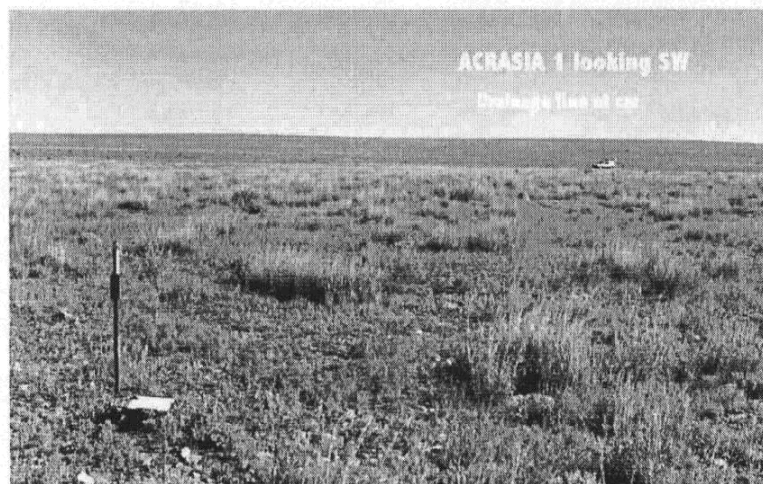


Figure 6. Acrasia 1 looking southwest. 2% slopes into drainage channel/depression (at car).