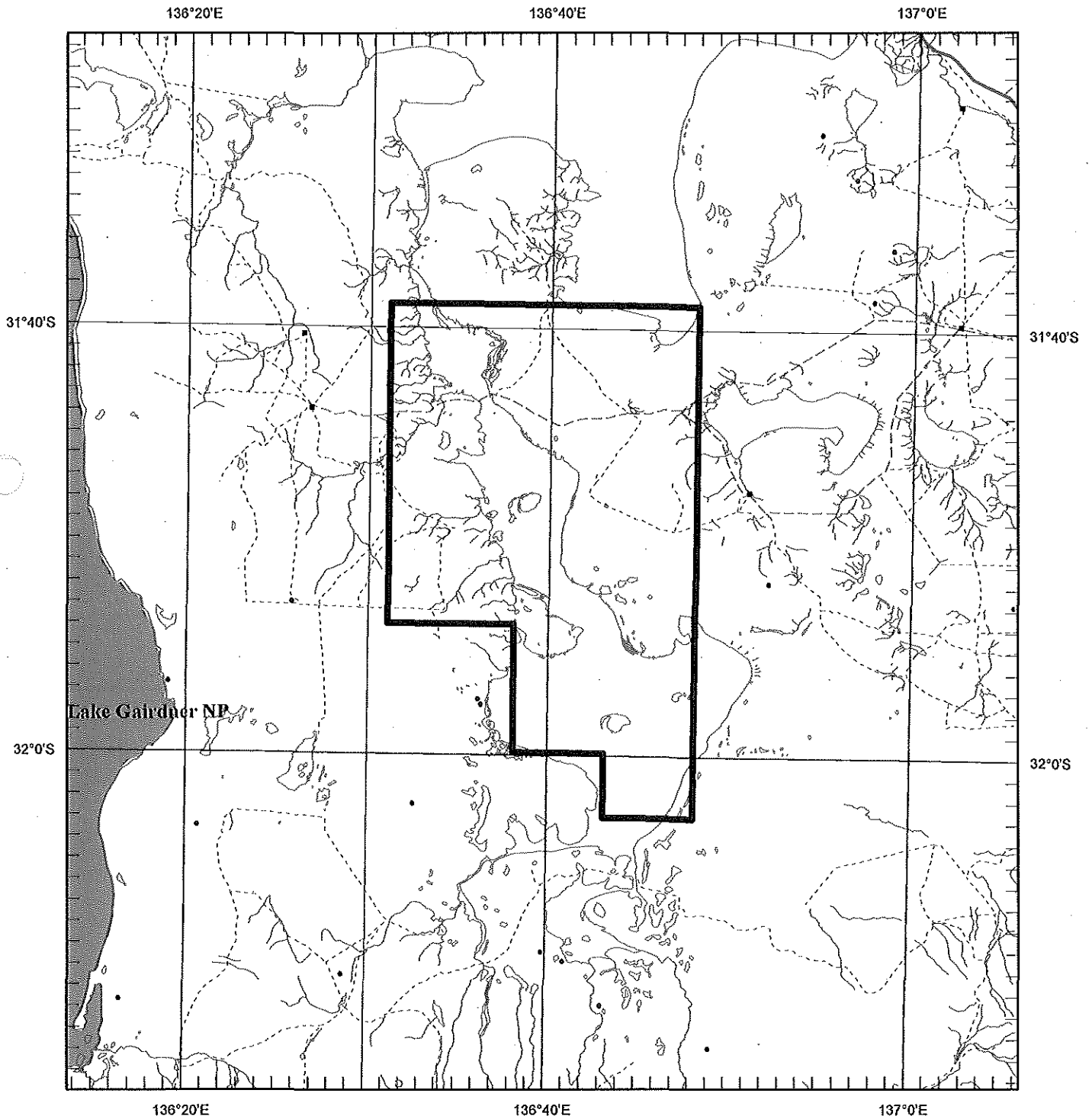
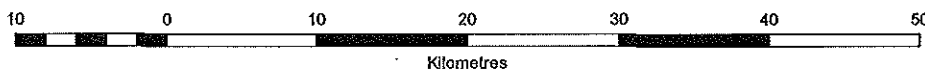


# SCHEDULE A



SCALE 1 : 500 000



APPLICATION BOUNDARIES LODGED IN : DATUM AGD66



APPLICANT : PIRIE RESOURCES PTY LTD

FILE REF : 2011/00261

TYPE : MINERAL ONLY

AREA : 962 sq km (approx)

1 : 250 000 MAPSHEETS : TORRENS PORT AUGUSTA

LOCALITY : YALYMBOO - Approximately 60 km SSW of Woomera

DATE GRANTED:

DATE EXPIRED:

EL NO:

# SCHEDULE A

EXPLORATION LICENCE No. **261/11**

## DESCRIPTION OF AREA

YALYMBOO AREA – Approximately 60 km SSW of Woomera, bounded as follows:

Commencing at a point being the intersection of latitude 31°39'S and longitude 136°31'E, thence east to longitude 136°48'E, south to latitude 32°03'S, west to longitude 136°43'E, north to latitude 32°00'S, west to longitude 136°38'E, north to latitude 31°54'S, west to longitude 136°31'E, and north to the point of commencement, all the within latitudes and longitudes being geodetic and expressed in terms of the Australian Geodetic Datum as defined on p. 4984 of Commonwealth Gazette number 84 dated October 6, 1966 (AGD66).

AREA: 962 square kilometres approximately.