

# Lacewings

Number 19

Revised November 1993

By Charlma Phillips, Principal Forest Health Scientist

Lacewings are small to medium, delicate insects that have two pairs of lace-like wings - hence the name. There are many different species which occupy many different habitats. All are extremely beneficial insects.

The immature (larval) stages, (and the adult stages in some species), are predators of other insects such as psyllids, scale insects, aphids and small caterpillars. Each larva may consume 100-200 pest insects during its development, this making lacewings important in the regulation of pest population numbers, particularly of small sucking insects.

Adult lacewings are readily identified by their delicate wings which are held in a tent shape above the body when at rest. Little is known of their biology.

Eggs (Pictured right) are white, oval in shape and laid on long thread or hair-like stalks on leaves or twigs, often in groups. The larvae are very active with well developed thoracic legs but no abdominal legs.



Lacewings, *Chrysopa* spp.



Lacewing *Porismus* spp.

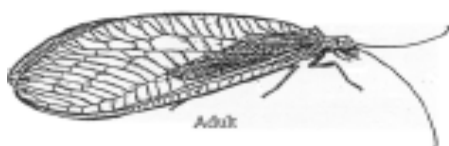
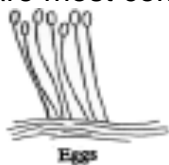
The most commonly found lacewings are *Chrysopa* spp. (Pictured above left). Many people would be familiar with these insects. They are bright green in colour with clear wings, long thread-like antennae and large, golden, iridescent eyes. They come to light at night.

Other species which may be seen are *Campion* spp., *Porismus* spp. (Pictured above right) and *Glenoleon* spp., though these are not common.

*Campion* spp. (Pictured left) are very distinctive. The adults bear a striking resemblance to praying mantids, having large well developed front legs adapted for catching and holding prey. They can be distinguished from praying mantids (which are also predatory insects) by their wings. *Campion* spp. have two pairs of clear wings whilst praying mantids have their forewings modified as covers for the folded membranous hindwings.



*Porismus* spp. are medium to large insects with wings patterned with black markings. Adults are most common in summer and autumn.



***Chrysopa* spp. life stages**

## Summary

**When to look:** Mainly in summer and autumn

**Where to look:** On foliage for larvae and on twigs and bark for eggs

**What to look for:** White oval eggs on thread-like stalks  
Active larvae (see diagram above)  
Adults

**NOTE:** These are very beneficial insects.

**For further information contact:**

**PIRSA Forestry  
PO Box 2124  
MOUNT GAMBIER SA 5290**

**Phone: (08) 8735 1231**

**Fax: (08) 8723 1941**

**E-mail: [phillips.charlma@saugov.sa.gov.au](mailto:phillips.charlma@saugov.sa.gov.au)**

**Website: [www.pir.sa.gov.au](http://www.pir.sa.gov.au)**

**Disclaimer:** While this publication may be of assistance to you, the government of South Australia and its officers do not guarantee that it is without flaw of any kind or is wholly appropriate for your particular purpose. The Government therefore disclaims all liability for any error, loss or other consequence that may arise from you relying on any information in this publication.