

Information Systems and Database Support Program



Non-Confidential 2010/11 Data Summary of the South Australian Recreational Charter Boat Fishery



Malcolm Knight and Annie Vainickis

**SARDI Publication No. F2011/000438-1
SARDI Research Report Series No. 580**

**SARDI Aquatic Sciences
PO Box 120 Henley Beach SA 5022**

September 2011



**Government
of South Australia**

Report to PIRSA Fisheries and Aquaculture

Non-Confidential 2010/11 Data Summary of the South Australian Recreational Charter Boat Fishery

Report to PIRSA Fisheries and Aquaculture

Malcolm Knight and Annie Vainickis

**SARDI Publication No. F2011/000438-1
SARDI Research Report Series No. 580**

September 2011

This report may be cited as:

Knight, M.A. and Vainickis, A.A (2011). Non-Confidential 2010/11 Data Summary of the South Australian Recreational Charter Boat Fishery. Report to PIRSA Fisheries and Aquaculture. South Australian Research and Development Institute (Aquatic Sciences), Adelaide. SARDI Publication No. F2011/000438-1. SARDI Research Report Series No. 580. 13pp.

Cover Photo: Reel Therapy Absolute Fishing Charters (Courtesy of Ryan Carlisle)

South Australian Research and Development Institute

SARDI Aquatic Sciences
2 Hamra Avenue
West Beach SA 5024

Telephone: (08) 8207 5400

Facsimile: (08) 8207 5406

<http://www.sardi.sa.gov.au>

DISCLAIMER

The authors warrant that they have taken all reasonable care in producing this report. The report has been through the SARDI Aquatic Sciences internal review process, and has been formally approved for release by the Chief, Aquatic Sciences. Although all reasonable efforts have made to ensure quality, SARDI Aquatic Sciences does not warrant that the information in this report is free from errors or omissions. SARDI Aquatic Sciences does not accept any liability for the contents of this report or for any consequences arising from its use or any reliance placed upon it.

© 2011 SARDI

This work is copyright. Apart from any use as permitted under the *Copyright Act 1968 (Cth)*, no part may be reproduced by any process, electronic or otherwise, without the specific written permission of the copyright owner. Neither may information be stored in any form whatsoever without such permission.

Printed in Adelaide: September 2011

SARDI Publication No. F2011/000438-1
SARDI Research Report Series No. 580

Author(s): Malcolm Knight and Annie Vainickis

Reviewer(s): Dr. Mike Steer and Angelo Tsolos

Approved by: Dr. Tim Ward
Assoc Prof – Wild Fisheries

Signed: 

Date: 29 September 2011

Distribution: PIRSA Fisheries and Aquaculture, SAASC Library, University of Adelaide Library, Parliamentary Library, State Library and National Library

Circulation: Public Domain

Table of Contents

Introduction	1
Number of Active Charter Boat Operators.....	4
Numbers of Charter Boat Clients and Trip Days	4
Harvest Patterns for the Charter Boat Fishery.....	5
Key Species Retained by Region	7
Key Species Retained by Region by Activity	9

List of Figures

Figure 1: The South Australian Charter Boat Fishery marine fishing areas (MFA).....	2
Figure 2: The South Australian Charter Boat Fishery amalgamated fishing regions	3
Figure 3: The number of charter boat clients and trip days per month.....	4
Figure 4: The number of King George whiting captured by financial year.....	6
Figure 5: The number of Snapper captured by financial year.	6

List of Tables

Table 1: The number of charter boat licence holders active in the fishery	4
Table 2: The number of charter boat clients and trip days by financial year.	4
Table 3: Species harvested and retained by financial year.....	5
Table 4: The number of King George whiting captured by financial year.....	6
Table 5: The number of snapper captured by financial year.	6
Table 6: Gulf St Vincent/Kangaroo Island region key species retained by period	7
Table 7: Spencer Gulf/Coffin Bay region key species retained by period	7
Table 8: West Coast region key species retained by period	7
Table 9: Victor Harbor/South East region key species retained by period	7
Table 10: Other region key species retained by period	8
Table 11: All regions key species retained by period by activity.	9
Table 12: Gulf St Vincent/Kangaroo Island region key species retained by period by activity....	10
Table 13: Spencer Gulf/Coffin Bay region key species retained by period by activity.	11
Table 14: West Coast region key species retained by period by activity.....	12
Table 15: Victor Harbor/South East region key species retained by period by activity.	13
Table 16: Other region key species retained by period by activity.	13

Introduction

This report updates the 2010 status report and documents all activities of charter boat operations in South Australia. The document provides a data summary of the harvest patterns of the charter boat fishery, including an estimate of the numbers of species retained during the financial years 2008/09, 2009/10, and 2010/11.

The South Australian charter boat fishery commenced in July 2005 and operates from the Western Australian border (129° E longitude) to the Victorian border (141° E longitude) a total of 3,820 kilometres of coastline.

The South Australian marine waters are divided into Marine Fishing Areas (MFAs) which are used to distinguish harvest locations enabling spatial research and management of the fishery. These fishing areas are then allocated a corresponding map number. Charter boat activities are reported against those map numbers (Figure 1).

For reporting purposes the MFAs have been amalgamated into five regions (Figure 2).

Although the fishery is classified as a commercial fishery, a charter operator cannot take fish for trade or sale. Unlike commercial fishers who derive income from the sale of fish, charter boat operators derive an income by providing a service to their clients. Consequently, they are considered commercial operators rather than commercial fishers.

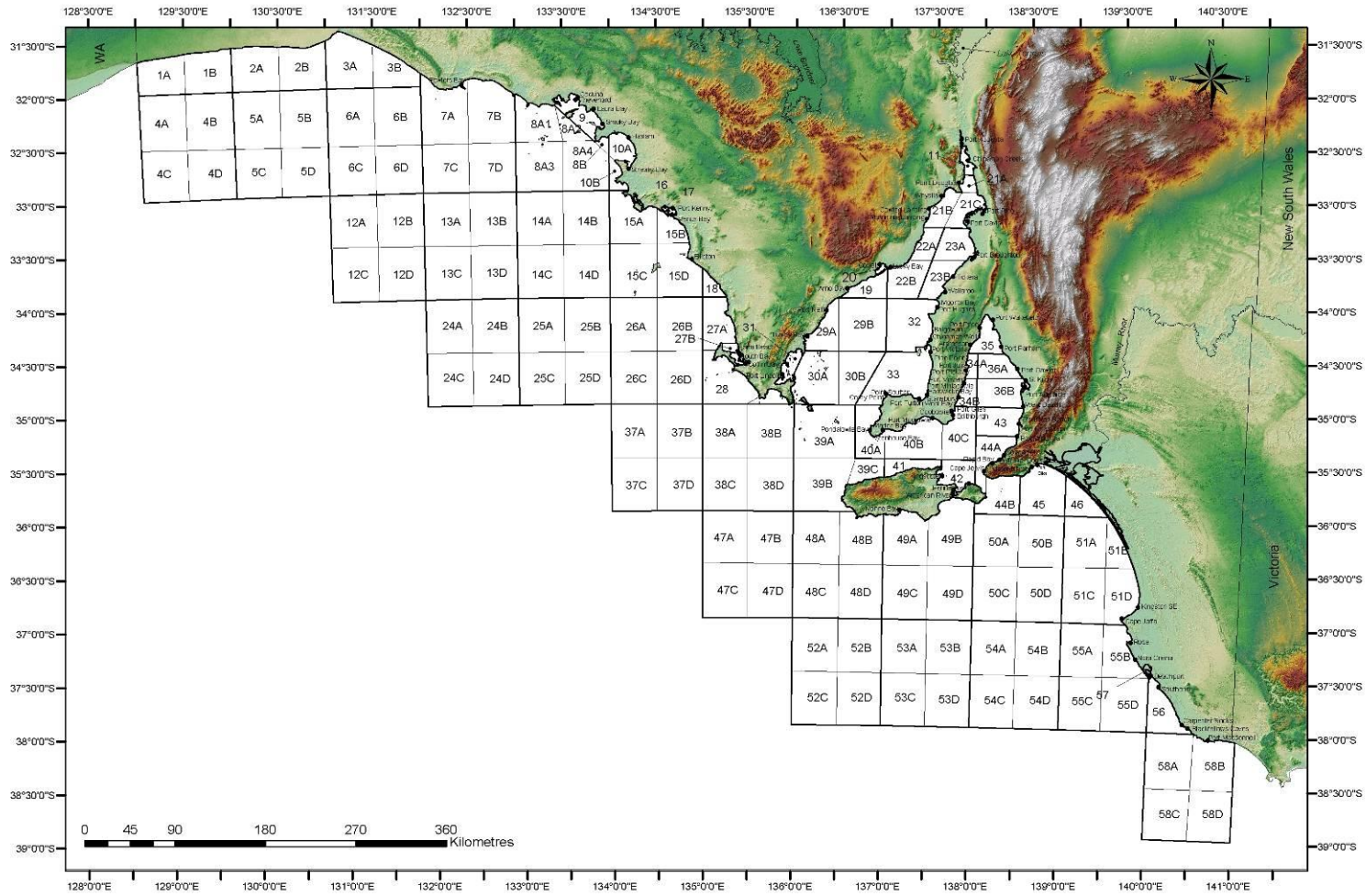


Figure 1: The South Australian Charter Boat Fishery marine fishing areas (MFA).

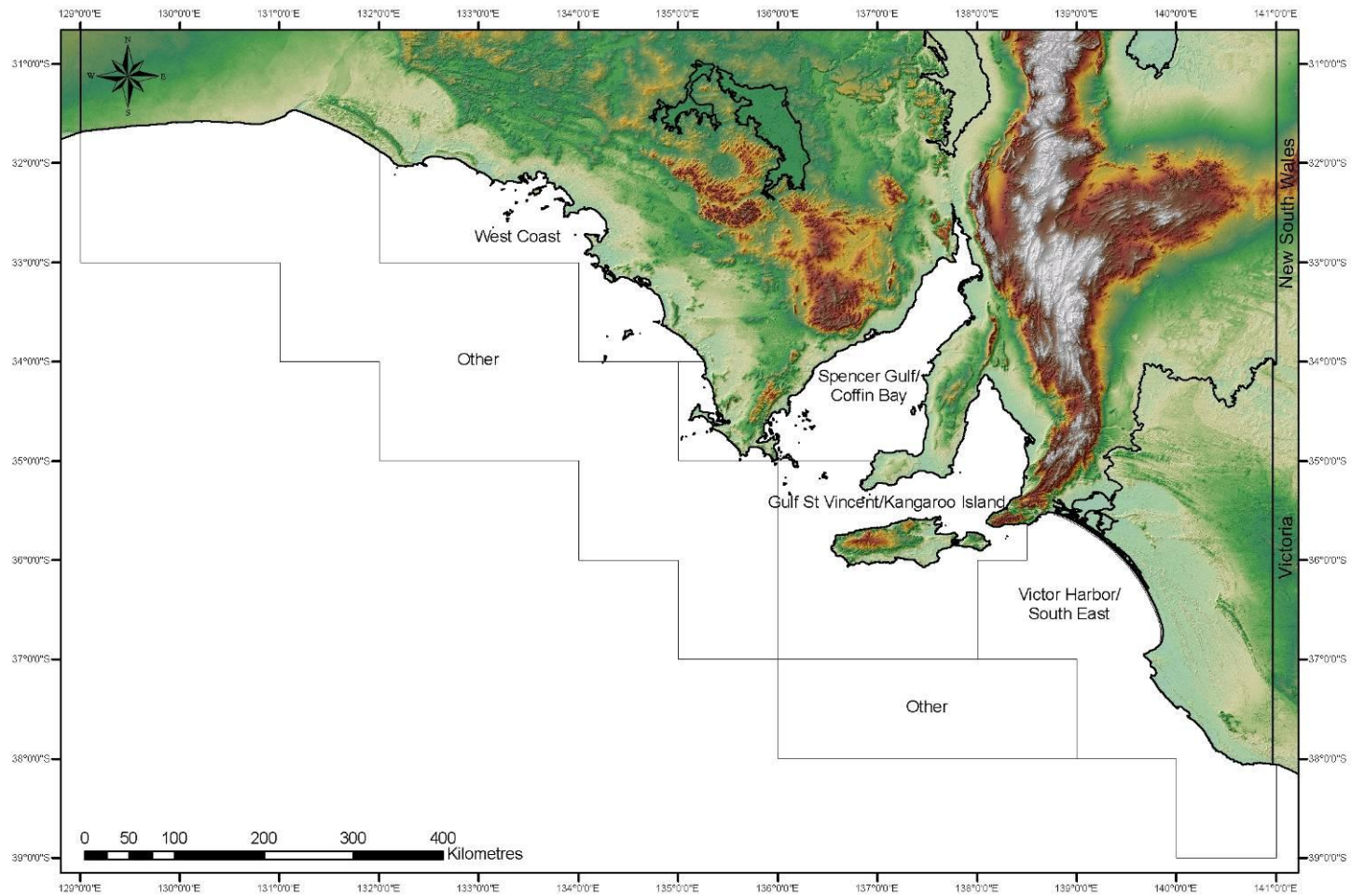


Figure 2: The South Australian Charter Boat Fishery amalgamated fishing regions.

Number of Active Charter Boat Operators

Table 1 shows the number of licence holders and the number active in the fishery.

Table 1: The number of charter boat licence holders active in the fishery.

	2008/09	2009/10	2010/11
Number of Licence Holders	108	109	109
Number Active in the Fishery	79	77	77

Numbers of Charter Boat Clients and Trip Days

Figure 3 shows the number of charter boat clients and trip days by month and Table 2 the clients and trip days by financial year.

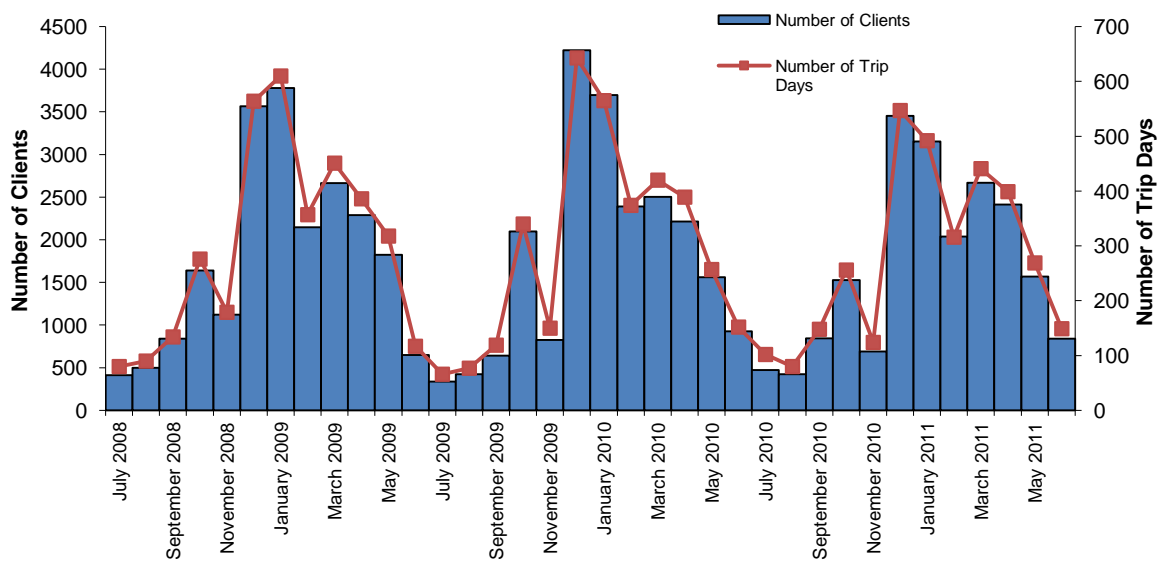


Figure 3: The number of charter boat clients and trip days per month.

Table 2: The number of charter boat clients and trip days by financial year.

	2008/09	2009/10	2010/11
Number of Clients	21,435	21,846	20,097
Number of Trip days	3,562	3,552	3,323

Harvest Patterns for the Charter Boat Fishery

Table 3 shows the harvest patterns of the species retained by financial year.

Table 3: Species harvested and retained by financial year.

Species	2008/09	2009/10	2010/11
Albacore	✓	✓	60
Australian Herring	2,864	3,240	1,658
Australian Salmon	7,051	6,075	1,954
Barracouta	183	151	✓
Bight Redfish	15,624	17,837	14,034
Blue Crab	1,497	1,383	761
Blue Groper	49	81	73
Blue Mackerel	✓	1,118	271
Blue Morwong	✓	86	61
Bronze Whaler Shark	11	23	14
Cuttlefish	25	26	44
Flathead	1,260	930	657
Garfish	6,259	6,327	6,710
Goulds Squid	✓	✓	✓
Gummy Shark	292	460	293
King George Whiting	54,563	49,860	54,327
Knife Jaw	✓	✓	✓
Leather Jacket	1,969	1,850	1,711
Ling	48	✓	17
Morwong	576	637	574
Other - Aggregated Species*	327	273	310
Parrotfish	717	1,059	584
Razor Fish	✓	✓	✓
Red Mullet	2,059	1,770	1,263
Samson Fish	71	144	107
School Shark	76	93	45
School Whiting	580	✓	178
Snapper	30,830	31,833	28,538
Snook	3,406	4,260	5,280
Southern Bluefin Tuna	736	1,035	1,144
Southern Calamary	2,244	3,348	2,307
Southern Rock Lobster	48	55	✓
Striped Perch	✓	✓	✓
Swallowtail	6,509	5,952	5,306
Sweep	3,449	2,809	2,202
Trevally	3,465	4,693	5,479
Weedy Whiting	✓	✓	✓
Yellowtail Kingfish	55	115	121
Totals	147,991	148,026	136,587

✓Denotes data where the species has been harvested but the licence count is less than 5

***Other – Aggregated Species**

Any Scallop	Gemfish	Mako Shark	Warehou
Blacklip Abalone	Greenlip Abalone	Mulloway	Whiskery Shark
Black Bream	Gurnard Perch	Port Jackson Shark	Wobbegong Shark
Deep Sea Trevalla	Hammer Head Shark	Rays and Skates	Yellow-Eye Mullet
Drummer	Hapuka	Red Gurnard	Yellowfin Whiting
Elephant Shark	Harlequin Fish	Skipjack Tuna	
Flounder	Mackerel Tuna	Southern Blue Devil	

Figure 4 and Table 4 show the number of King George Whiting captured by financial year and Figure 5 and Table 5 the number of Snapper captured by financial year.

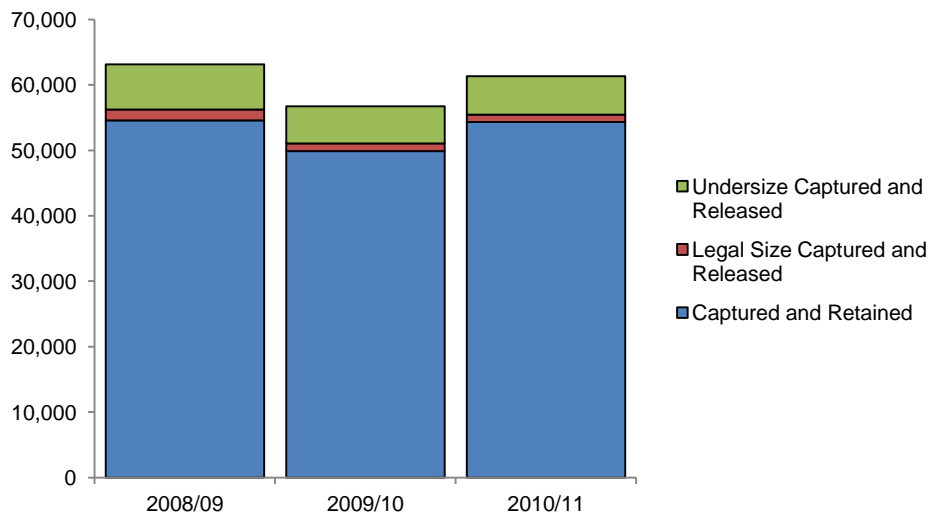


Figure 4: The number of King George whiting captured by financial year.

Table 4: The number of King George whiting captured by financial year.

Species	2008/09	2009/10	2010/11
Captured and Retained	54,563	49,860	54,327
Legal Size Captured and Released	1,677	1,186	1,153
Undersize Captured and Released	6,899	5,697	5,857
Totals	63,139	56,743	61,337

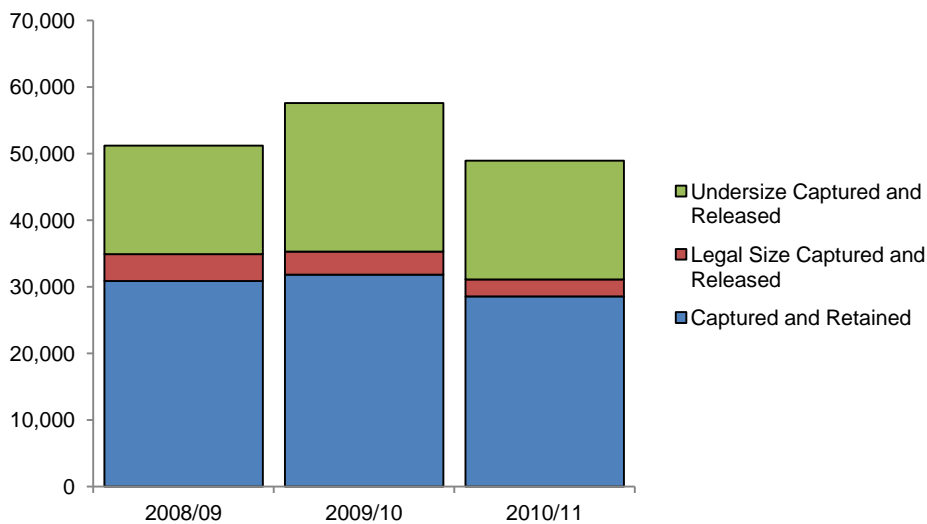


Figure 5: The number of snapper captured by financial year.

Table 5: The number of snapper captured by financial year.

Species	2008/09	2009/10	2010/11
Captured and Retained	30,830	31,833	28,538
Legal Size Captured and Released	4,039	3,464	2,546
Undersize Captured and Released	16,341	22,263	17,862
Totals	51,210	57,560	48,946

Key Species Retained by Region

Tables 6 through 10 show the key marine scale species retained by region by financial year (for regional boundaries refer to figure 2).

Table 6: Gulf St Vincent/Kangaroo Island region key species retained by period.

Species	2008/09	2009/10	2010/11
Australian Salmon	6,429	5,759	1,675
Bight Redfish	13,910	13,974	10,835
Blue Crab	690	✓	✓
Garfish	1,638	3,247	2,689
Gummy Shark	255	391	209
King George Whiting	34,463	28,575	29,089
Samson Fish	33	121	98
School Shark	55	77	33
Snapper	13,934	12,869	11,066
Snook	2,642	2,823	4,160
Southern Bluefin Tuna	258	605	570
Southern Calamary	765	1,786	826
Trevally	2,872	3,765	4,231

✓Denotes data where the species has been harvested but the licence count is less than 5

Table 7: Spencer Gulf/Coffin Bay region key species retained by period.

Species	2008/09	2009/10	2010/11
Australian Salmon	498	279	272
Bight Redfish	✓	1,509	1,766
Blue Crab	714	887	251
Garfish	4,621	3,080	4,021
Gummy Shark	15	21	✓
King George Whiting	18,144	20,104	23,400
Samson Fish	✓	✓	✓
School Shark	15	6	✓
Snapper	15,726	16,958	15,591
Snook	479	1,171	949
Southern Bluefin Tuna	94	141	135
Southern Calamary	1,407	1,476	1,460
Trevally	399	555	991

✓Denotes data where the species has been harvested but the licence count is less than 5

Table 8: West Coast region key species retained by period.

Species	2008/09	2009/10	2010/11
Australian Salmon	✓	✓	✓
Bight Redfish	911	1,559	842
Blue Crab	✓	✓	✓
Gummy Shark	✓	✓	✓
King George Whiting	1,896	679	1,130
Samson Fish	✓	✓	✓
School Shark	✓	✓	✓
Snapper	780	947	715
Snook	✓	142	49
Southern Bluefin Tuna	✓	✓	✓
Southern Calamary	✓	✓	✓
Trevally	✓	✓	✓

✓Denotes data where the species has been harvested but the licence count is less than 5

Table 9: Victor Harbor/South East region key species retained by period.

Species	2008/09	2009/10	2010/11
Australian Salmon	✓	✓	0
Bight Redfish	✓	254	239
Gummy Shark	12	34	58
King George Whiting	✓	✓	602
School Shark	0	✓	✓
Snapper	317	✓	1,157
Snook	✓	✓	✓
Southern Bluefin Tuna	✓	188	351
Southern Calamary	0	✓	0
Trevally	✓	✓	✓

✓Denotes data where the species has been harvested but the licence count is less than 5

Table 10: Other region key species retained by period.

Species	2008/09	2009/10	2010/11
Australian Salmon	✓	✓	✓
Bight Redfish	✓	✓	✓
Gummy Shark	✓	✓	✓
King George Whiting	✓	✓	✓
Samson Fish	✓	0	✓
School Shark	0	✓	0
Snapper	✓	✓	✓
Snook	0	0	✓
Southern Bluefin Tuna	✓	79	✓
Southern Calamary	✓	✓	0
Trevally	✓	✓	✓

✓Denotes data where the species has been harvested but the licence count is less than 5

Key Species Retained by Region by Activity

Tables 11 through 16 show the key marine scale species retained regions by financial year by activity (for regional boundaries refer to figure 2).

Table 11: All regions key species retained by period by activity.

Species	2008/09	2009/10	2010/11
Australian Salmon			
Game Fishing		✓	
Inshore Scale Fishing	7,032	6,057	1,943
Offshore Scale Fishing	✓	✓	11
Bight Redfish			
Game Fishing		✓	85
Inshore Scale Fishing	3,449	6,142	5,890
Offshore Scale Fishing	12,175	11,689	8,059
Blue Crab			
Crab Netting	220	✓	262
Game Fishing			✓
Inshore Scale Fishing	1,277	1,253	464
Garfish			
Crab Netting		✓	
Inshore Scale Fishing	6,259	6,303	6,710
Gummy Shark			
Game Fishing			✓
Inshore Scale Fishing	227	377	209
Offshore Scale Fishing	65	83	83
King George Whiting			
Game Fishing	✓	✓	113
Inshore Scale Fishing	53,716	49,222	53,509
Offshore Scale Fishing	845	620	705
Samson Fish			
Game Fishing		✓	
Inshore Scale Fishing	26	✓	14
Offshore Scale Fishing	45	123	93
School Shark			
Game Fishing		✓	
Inshore Scale Fishing	64	68	23
Offshore Scale Fishing	✓	24	22
Snapper			
Game Fishing	✓	67	15
Inshore Scale Fishing	25,603	28,256	26,782
Offshore Scale Fishing	5,220	3,507	1,740
Lobster Pot Fishing		✓	✓
Snook			
Game Fishing	✓		✓
Inshore Scale Fishing	3,396	4,211	5,221
Offshore Scale Fishing	✓	✓	✓
Southern Bluefin Tuna			
Deepwater Scale Fishing			✓
Game Fishing	526	469	649
Inshore Scale Fishing	✓	68	36
Offshore Scale Fishing	188	498	447
Southern Calamary			
Crab Netting		✓	
Inshore Scale Fishing	2,208	3,312	2,297
Offshore Scale Fishing	✓	✓	✓
Trevally			
Game Fishing		✓	✓
Inshore Scale Fishing	2,401	3,656	4,395
Offshore Scale Fishing	1,064	1,029	975

✓Denotes data where the species has been harvested but the licence count is less than 5

Table 12: Gulf St Vincent/Kangaroo Island region key species retained by period by activity.

Species	2008/09	2009/10	2010/11
Australian Salmon			
Inshore Scale Fishing	6,426	5,756	1,674
Offshore Scale Fishing	✓	✓	✓
Bight Redfish			
Game Fishing			✓
Inshore Scale Fishing	2,879	4,167	3,813
Offshore Scale Fishing	11,031	9,807	6,971
Blue Crab			
Crab Netting	✓	✓	✓
Inshore Scale Fishing	✓	✓	✓
Garfish			
Crab Netting		✓	
Inshore Scale Fishing	1,638	3,223	2,689
Gummy Shark			
Inshore Scale Fishing	195	329	175
Offshore Scale Fishing	60	62	34
King George Whiting			
Game Fishing	✓		✓
Inshore Scale Fishing	33,638	27,959	28,315
Offshore Scale Fishing	823	616	704
Samson Fish			
Inshore Scale Fishing	✓	✓	✓
Offshore Scale Fishing	28	118	✓
School Shark			
Inshore Scale Fishing	43	56	18
Offshore Scale Fishing	✓	✓	✓
Snapper			
Game Fishing	✓	✓	✓
Inshore Scale Fishing	9,040	9,495	9,440
Offshore Scale Fishing	4,887	3,365	1,615
Lobster Pot Fishing		✓	✓
Snook			
Inshore Scale Fishing	2,637	2,804	4,117
Offshore Scale Fishing	✓	✓	✓
Southern Bluefin Tuna			
Game Fishing	✓	118	185
Inshore Scale Fishing	✓	✓	
Offshore Scale Fishing	125	✓	✓
Southern Calamary			
Crab Netting		✓	
Inshore Scale Fishing	756	1,768	816
Offshore Scale Fishing	✓	✓	✓
Trevally			
Game Fishing			✓
Inshore Scale Fishing	1,929	2,812	3,160
Offshore Scale Fishing	943	953	962

✓Denotes data where the species has been harvested but the licence count is less than 5

Table 13: Spencer Gulf/Coffin Bay region key species retained by period by activity.

Species	2008/09	2009/10	2010/11
Australian Salmon			
Inshore Scale Fishing	494	279	265
Offshore Scale Fishing	✓		✓
Bight Redfish			
Game Fishing		✓	✓
Inshore Scale Fishing	✓	922	1404
Offshore Scale Fishing	✓	581	✓
Blue Crab			
Crab Netting	✓	✓	✓
Inshore Scale Fishing	626	804	✓
Garfish			
Inshore Scale Fishing	4,621	3,080	4,021
Gummy Shark			
Inshore Scale Fishing	15	19	✓
Offshore Scale Fishing		✓	
King George Whiting			
Game Fishing		✓	✓
Inshore Scale Fishing	18,144	20,086	23,388
Offshore Scale Fishing			✓
Samson Fish			
Inshore Scale Fishing	✓		✓
Offshore Scale Fishing	✓	✓	
School Shark			
Inshore Scale Fishing	15	6	
Offshore Scale Fishing			✓
Snapper			
Game Fishing		✓	✓
Inshore Scale Fishing	15,726	16,909	15,568
Offshore Scale Fishing		✓	✓
Snook			
Inshore Scale Fishing	479	1,171	949
Southern Bluefin Tuna			
Game Fishing	49	100	✓
Inshore Scale Fishing	✓	✓	✓
Offshore Scale Fishing	✓	✓	✓
Southern Calamary			
Inshore Scale Fishing	1,407	1,476	1,460
Trevally			
Game Fishing		✓	
Inshore Scale Fishing	365	533	989
Offshore Scale Fishing	✓	✓	✓

✓Denotes data where the species has been harvested but the licence count is less than 5

Table 14: West Coast region key species retained by period by activity.

Species	2008/09	2009/10	2010/11
Australian Salmon			
Game Fishing		✓	
Inshore Scale Fishing	✓	✓	✓
Offshore Scale Fishing	✓	✓	✓
Bight Redfish			
Inshore Scale Fishing	386	786	408
Offshore Scale Fishing	✓	✓	✓
Blue Crab			
Crab Netting	✓		✓
Game Fishing			✓
Inshore Scale Fishing	✓	✓	
Gummy Shark			
Inshore Scale Fishing	✓	✓	✓
Offshore Scale Fishing		✓	
King George Whiting			
Game Fishing			✓
Inshore Scale Fishing	1,880	675	1,098
Offshore Scale Fishing	✓	✓	
Samson Fish			
Game Fishing		✓	
Inshore Scale Fishing	✓	✓	✓
Offshore Scale Fishing			✓
School Shark			
Inshore Scale Fishing	✓	✓	✓
Offshore Scale Fishing		✓	
Snapper			
Game Fishing		✓	✓
Inshore Scale Fishing	553	854	650
Offshore Scale Fishing	227	✓	✓
Snook			
Game Fishing	✓		✓
Inshore Scale Fishing	✓	✓	✓
Offshore Scale Fishing		✓	✓
Southern Bluefin Tuna			
Game Fishing	✓	✓	✓
Inshore Scale Fishing	✓		✓
Offshore Scale Fishing	✓		✓
Southern Calamary			
Inshore Scale Fishing	✓	✓	✓
Trevally			
Inshore Scale Fishing	✓	✓	✓
Offshore Scale Fishing	✓	✓	✓

✓Denotes data where the species has been harvested but the licence count is less than 5

Table 15: Victor Harbor/South East region key species retained by period by activity.

Species	2008/09	2009/10	2010/11
Australian Salmon			
Inshore Scale Fishing	✓	✓	
Bight Redfish			
Game Fishing			✓
Inshore Scale Fishing	✓	✓	✓
Offshore Scale Fishing		✓	✓
Gummy Shark			
Game Fishing			✓
Inshore Scale Fishing	✓	✓	✓
Offshore Scale Fishing	✓	✓	✓
King George Whiting			
Inshore Scale Fishing	✓	✓	602
School Shark			
Game Fishing		✓	
Inshore Scale Fishing		✓	✓
Offshore Scale Fishing		✓	✓
Snapper			
Game Fishing		✓	✓
Inshore Scale Fishing	284	990	1,123
Offshore Scale Fishing	✓	✓	✓
Snook			
Game Fishing	✓		
Inshore Scale Fishing	✓	✓	✓
Southern Bluefin Tuna			
Deepwater Scale Fishing			✓
Game Fishing	✓	✓	✓
Inshore Scale Fishing		✓	✓
Offshore Scale Fishing		✓	✓
Southern Calamary			
Inshore Scale Fishing		✓	
Trevally			
Inshore Scale Fishing	✓	✓	✓

✓Denotes data where the species has been harvested but the licence count is less than 5

Table 16: Other region key species retained by period by activity.

Species	2008/09	2009/10	2010/11
Australian Salmon			
Offshore Scale Fishing	✓	✓	✓
Bight Redfish			
Inshore Scale Fishing		✓	✓
Offshore Scale Fishing	✓	✓	✓
Gummy Shark			
Offshore Scale Fishing	✓	✓	✓
King George Whiting			
Inshore Scale Fishing		✓	✓
Offshore Scale Fishing	✓		
Samson Fish			
Offshore Scale Fishing	✓		✓
School Shark			
Offshore Scale Fishing		✓	
Snapper			
Inshore Scale Fishing		✓	✓
Offshore Scale Fishing	✓	✓	✓
Snook			
Offshore Scale Fishing			✓
Southern Bluefin Tuna			
Game Fishing	✓	✓	✓
Inshore Scale Fishing		✓	
Offshore Scale Fishing		✓	
Southern Calamary			
Offshore Scale Fishing	✓	✓	
Trevally			
Inshore Scale Fishing		✓	
Offshore Scale Fishing	✓	✓	✓

✓Denotes data where the species has been harvested but the licence count is less than 5