



Minerals and Petroleum South Australia

P1

EARTH

Resources

INFORMATION SHEET

HOLDERS OF PETROLEUM AND GEOTHERMAL TENEMENTS IN SOUTH AUSTRALIA



Government of South Australia
Primary Industries and Resources SA

Petroleum

101 Grenfell Street, Adelaide
South Australia
GPO Box 1671
Adelaide SA 5001
Email pirsa.petroleum@saugov.sa.gov.au

Phone
Fax
Website

National	(08) 8463 3204
International	+61 8 8463 3204
National	(08) 8463 3229
International	+61 8 8463 3229
Website	www.petroleum.pir.sa.gov.au

Onshore exploration licences – petroleum (PEL)

Licence number	Former area or ID number	Basin	Licence holder and/or operator(s)	Interest (%) [†]	Expiry date	Area (km ²)	Further renewals permitted	Minimum area to relinquish upon renewal (km ²) [†]
PEL 57 [^]		Otway	Lakes Oil NL* Victoria Petroleum NL Mirboo Ridge Pty Ltd	80.00 10.00 10.00	17-May-2008	408	1	262
PEL 73		Stansbury	David M Schuette DMS Partners, LP* PEL 73 Investment Partners, LP A.I.L Holdings Limited	16.67 41.66 25.00 16.67	26-Dec-2007	625	3	156
PEL 81		Officer	Officer Basin Energy Pty Ltd	100.00	24-Jun-2012	20,531	3	5,133
PEL 82 ^{^^}		Otway	Meridian Resources Pty Ltd	100.00	21-Sep-2008	275	1	138
PEL 86	CO98-A	Cooper/Eromanga	Victoria Oil Exploration (1977) Pty Ltd* Permian Oil Pty Ltd Springfield Oil and Gas Pty Ltd Impress (Cooper Basin) Pty Ltd	40.00 20.00 15.00 25.00	07-Jan-2008	4,316	2	1,439
PEL 87	CO98-B	Cooper/Eromanga	Victoria Oil Exploration (1977) Pty Ltd* Permian Oil Pty Ltd Springfield Oil and Gas Pty Ltd Impress (Cooper Basin) Pty Ltd	40.00 20.00 15.00 25.00	07-Jan-2008	4,315	2	1,438
PEL 88	CO98-C	Cooper/Eromanga	Sundance Energy Australia Limited Cooper Energy Limited* Victoria Oil Exploration (1977) Pty Ltd Traditional Oil Exploration Proprietary Limited Liberty Petroleum Corporation	45.00 30.00 10.00 10.00 5.00	15-May-2008	4,987	2	1,662
PEL 89	CO98-D	Cooper/Eromanga	Victoria Oil Exploration (1977) Pty Ltd* Permian Oil Pty Ltd Springfield Oil and Gas Pty Ltd Impress (Cooper Basin) Pty Ltd	40.00 20.00 15.00 25.00	07-Jan-2008	4,891	2	1,630
PEL 90	CO98-E	Cooper/Eromanga	Stuart Petroleum Limited** Mawson Petroleum Pty Limited [#] Cooper Energy Limited [#]	100.00	29-Oct-2007	1,344	2	455
PEL 91 ^{^^^}	CO98-F	Cooper/Eromanga	Great Artesian Oil and Gas Limited [#] Beach Petroleum Limited** [#]	60.00 40.00	04-Jun-2008	2,964	2	988
PEL 92	CO98-G	Cooper/Eromanga	Beach Petroleum Limited** Cooper Energy Limited	75.00 25.00	04-Nov-2011	1,898	1	959
PEL 93	CO98-H	Cooper/Eromanga	Stuart Petroleum Limited** [#] Cooper Energy Limited	70.00 30.00	04-Nov-2011	1,249	1	628

Onshore exploration licences – petroleum (PEL)

Licence number	Former area or ID number	Basin	Licence holder and/or operator(s)	Interest (%) [†]	Expiry date	Area (km ²)	Further renewals permitted	Minimum area to relinquish upon renewal (km ²) [†]
PEL 94	CO98-I	Cooper/Eromanga	Beach Petroleum Limited** Magellan Petroleum (NT) Pty Ltd Victoria Oil Exploration (1977) Pty Ltd	50.00 35.00 15.00	04-May-2012	1,801	1	901
PEL 95	CO98-J	Cooper/Eromanga	Beach Petroleum Limited** Magellan Petroleum (NT) Pty Ltd	50.00 50.00	29-Oct-2011	2,577	1	1,298
PEL 100	CO99-A	Cooper/Eromanga	Liberty Petroleum Corporation Sundance Energy Australia Limited Traditional Oil Exploration Proprietary Limited Cooper Energy Limited Stuart Petroleum Limited*	5.00 46.67 20.00 28.33	06-May-2008	594	1	297
PEL 101	CO99-B	Cooper/Eromanga	Vernon E. Faulconer Australia, Inc. Innamincka Petroleum Limited** Mid Continent Equipment (Australia) Pty Ltd	37.50 37.50 25.00	22-Jan-2009	617	1	309
PEL 102	CO99-C	Cooper/Eromanga	Stuart Petroleum Limited**	100.00	25-Apr-2008	650	1	325
PEL 103	CO99-D	Cooper/Eromanga	Innamincka Petroleum Limited**	100.00	28-Jul-2008	745	1	384
PEL 104	CO99-E	Cooper/Eromanga	Victoria Oil Exploration (1977) Pty Ltd* Permian Oil Pty Ltd Springfield Oil and Gas Pty Ltd Impress (Cooper Basin) Pty Ltd	40.00 20.00 15.00 25.00	14-Aug-2008	1,065	1	533
PEL 105	CO99-F	Cooper/Eromanga	Hughes & Hughes Australia Pty Ltd* Tri-C Resources, Inc.	66.70 33.30	23-Oct-2009	437	1	219
PEL 106 ^{~~~~}	CO99-G	Cooper/Eromanga	Great Artesian Oil and Gas Limited# Traditional Oil Exploration Proprietary Limited# Beach Petroleum Ltd#		08-Oct-2008	1,007	1	504
PEL 107	CO99-H	Cooper/Eromanga	Great Artesian Oil and Gas Limited# Magellan Petroleum (Southern) Pty Ltd# Beach Petroleum Limited**		01-Dec-2008	813	1	407
PEL 108	CO2000-A	Cooper/Eromanga	Australian-Canadian Oil Royalties Ltd Ely Sakhai Holloman Oil and Gas Limited*	50.00 50.00	10-Jun-2008	2,047	2	682
PEL 109	CO2000-B	Cooper/Eromanga	Australian-Canadian Oil Royalties Ltd Ely Sakhai Holloman Oil and Gas Limited*	50.00 50.00	10-Jun-2008	1,515	2	505

Onshore exploration licences – petroleum (PEL)

Licence number	Former area or ID number	Basin	Licence holder and/or operator(s)	Interest (%) [†]	Expiry date	Area (km ²)	Further renewals permitted	Minimum area to relinquish upon renewal (km ²) [†]
PEL 110	CO2000-C	Cooper/Eromanga	Beach Petroleum Limited** Magellan Petroleum (Southern) Pty Ltd Cooper Energy Limited	37.50 37.50 25.00	08-Aug-2008	1,458	2	486
PEL 111	CO2000-D	Cooper/Eromanga	Victoria Oil Exploration (1977) Pty Ltd* Permian Oil Pty Ltd Springfield Oil and Gas Pty Ltd Impress (Cooper Basin) Pty Ltd	40.00 20.00 15.00 25.00	15-Oct-2009	1,174	2	391
PEL 112	CO2000-E	Cooper/Eromanga	Australian-Canadian Oil Royalties Ltd Ely Sakhai Holloman Oil and Gas Limited*	50.00 50.00	10-Jun-2008	3,326	2	1,109
PEL 113	CO2000-F	Cooper/Eromanga	Stuart Petroleum Limited**# Beach Oil and Gas Pty Limited#	100.00	30-Apr-2008	1,158	1	582
PEL 114	CO2000-G	Cooper/Eromanga	Santos Ltd**	100.00	21-Jul-2008	956	1	479
PEL 115	CO2000-H	Cooper/Eromanga	Victoria Oil Exploration (1977) Pty Ltd* Permian Oil Pty Ltd Springfield Oil and Gas Pty Ltd Impress (Cooper Basin) Pty Ltd	40.00 20.00 15.00 25.00	12-Nov-2008	1,095	1	553
PEL 117	3/2000	Arckaringa	SAPEX Limited	100.00	02-Oct-2011	9,515	2	3,172
PEL 118	4/2000	Arckaringa	SAPEX Limited	100.00	02-Oct-2011	7,400	2	2,467
PEL 119	5/2000	Arckaringa	SAPEX Limited	100.00	02-Oct-2011	9,751	2	3,250
PEL 120	6/2000	St Vincent	SAPEX Limited	100.00	02-Oct-2011	9,601	2	3,200
PEL 121	7/2000	Arckaringa	SAPEX Limited	100.00	02-Oct-2011	9,806	2	3,269
PEL 122	8/2000	Arckaringa	SAPEX Limited	100.00	02-Oct-2011	8,460	2	2,820
PEL 123	9/2000	Arckaringa	SAPEX Limited	100.00	02-Oct-2011	9,646	2	3,215
PEL 124	10/2000	Arckaringa	SAPEX Limited	100.00	02-Oct-2011	9,848	2	3,283
PEL 127	13/2000	Otway	Hybrid Energy SA Pty Ltd	100.00	14-Jun-2010	2,102	2	1,051
PEL 132	3/2001	Arrowie	Meridian Resources Pty Ltd	100.00	22-Aug-2012	9,718	2	3,239
PEL 139	-	Officer	Standard Oil Pty Ltd* Dawnpark Holdings Pty Ltd	50.00 50.00	12-Apr-2012	9,861	2	3,287
PEL 154 ^{^^^}	OT2002-A	Otway	Rawson Resources Limited	100.00	30-Jun-2009	1,404	1	702
PEL 155 ^{^^^}	OT2002-B	Otway	Rawson Resources Limited	100.00	30-Jun-2009	905	1	453
PEL 182	CO2003-A	Cooper/Eromanga	Eagle Bay Resources NL	100.00	23-Nov-2011	1,745	1	873
PEL 186	OT2004-A	Otway	Neo Oil Pty Ltd	100.00	27-Jan-2010	1,421	1	711
PEL 187	OT2004-B	Otway	Neo Oil Pty Ltd	100.00	27-Jan-2010	268	1	134
PEL 218	CO2005-A	Cooper/Eromanga	Adelaide Energy Pty Ltd	100.00	31-Oct-2012	1,599	1	800

Onshore exploration licences – petroleum (PEL)

Licence number	Former area or ID number	Basin	Licence holder and/or operator(s)	Interest (%) [†]	Expiry date	Area (km ²)	Further renewals permitted	Minimum area to relinquish upon renewal (km ²) [†]
PEL 253	-	Officer	Officer Basin Energy Pty Ltd	100.00	24-Jun-2012	6,169	2	2,056
PEL 255	OT2006-A	Otway	Adelaide Energy Limited	100.00	29-Feb-2012	37	1	19
						Total area (km²)	180,094	

[# Click here to access Public Licence Register website for details of interests](#)

PEL - petroleum exploration licence (including coal seam methane and in-situ gasification)

* denotes operator

** denotes low level official supervision operator

† rounded to nearest whole number

^ Suspended 31 August 2007 to 28 February 2008

^^ Suspended 20 September 2007 to 19 March 2008

^^^ Suspended 21 September 2007 to 20 March 2008

^^^^ Suspended 28 September 2007 to 27 March 2008

^^^^^ Suspended 12 October 2007 to 11 April 2008

NOTE: Orange text entries throughout the document indicate changes since September 2007 edition of P1

Onshore exploration licence applications – petroleum (PELA)

Application number	Former area or ID number	Basin	Applicant(s)	Date of application	Area (km ²)	Status
PELA 71	ER 96 D	Cooper/Eromanga	Strike Oil Limited Pontia Pty Ltd	01-Oct-1996	6,813	Under consideration
PELA 77	27/2/162	Pedirka	Merlin Energy Pty Ltd	01-Nov-1996	5,762	Under consideration
PELA 96	CO98-K	Cooper/Eromanga	Strike Oil Limited Australian Gasfields Ltd	11-Mar-1999	5,236	Under consideration
PELA 126	12/2000	Polda	Centrex Resources NL	14-Sep-2000	9,168	Under consideration
PELA 131	2/2001	Arrowie	Meridian Resources Pty Ltd	23-Mar-2001	5,272	Under consideration
PELA 133	4/2001	Arrowie	Meridian Resources Pty Ltd	23-Mar-2001	9,955	Under consideration
PELA 134	5/2001	Arrowie	Meridian Resources Pty Ltd	23-Mar-2001	9,861	Under consideration
PELA 137	-	Renmark Trough	Murray Basin Petroleum Pty Ltd	10-Sep-2001	4,587	Under consideration
PELA 138	-	Officer	Standard Oil Pty Ltd; Dawnpark Holdings Pty Ltd	17-Dec-2001	6,264	Under consideration
PELA 140	-	Officer	Standard Oil Pty Ltd; Dawnpark Holdings Pty Ltd	30-Jan-2002	9,770	Under consideration
PELA 141	-	Officer	Standard Oil Pty Ltd; Dawnpark Holdings Pty Ltd	30-Jan-2002	9,912	Under consideration
PELA 142	-	Officer	Standard Oil Pty Ltd; Dawnpark Holdings Pty Ltd	30-Jan-2002	9,983	Under consideration
PELA 143	-	Officer	Standard Oil Pty Ltd; Dawnpark Holdings Pty Ltd	30-Jan-2002	9,891	Under consideration
PELA 145	-	Willochra	Planet Gas Limited	07-Mar-2002	6,197	Under consideration
PELA 146	-	Lake Eyre	Planet Gas Limited	07-Mar-2002	2,679	Under consideration
PELA 147	-	Officer	Standard Oil Pty Ltd; Dawnpark Holdings Pty Ltd	14-Mar-2002	9,301	Under consideration
PELA 148	-	Officer	Standard Oil Pty Ltd; Dawnpark Holdings Pty Ltd	14-Mar-2002	9,393	Under consideration
PELA 152	-	Renmark Trough	Murray Basin Petroleum Pty Ltd	10-Sep-2001	3,015	Under consideration
PELA 153	-	Polda	Centrex Resources NL	14-Mar-2003	2,316	Under consideration
PELA 159	-	Pedirka	Tri-Star Energy Company	31-Oct-2003	9,909	Under consideration
PELA 160	-	Pedirka	Tri-Star Energy Company	31-Oct-2003	9,924	Under consideration
PELA 174	-	Sedan	Corporate Developments Pty Ltd	11-Jun-2004	3,403	Under consideration
PELA 183	-	Torrens Hinge Zone	Eden Energy Limited	11-Jan-2005	3,977	Offered to applicant
PELA 218	CO-2005A	Cooper/Eromanga	Adelaide Energy Pty Ltd	13-Oct-2005		Granted
PELA 219	-	Troubridge	Merrill Gray	28-Oct-2005	191	Under consideration
PELA 240	-	Torrens Hinge Zone	Eden Energy Limited	31-May-2006	3,596	Under consideration
PELA 288	-	Simpson	Stuart Petroleum Limited	10-May-2007	9,867	Under consideration
PELA 289	-	Simpson	Stuart Petroleum Limited	10-May-2007	7,061	Under consideration
PELA 290	-	Simpson	Stuart Petroleum Limited	10-May-2007	6,376	Under consideration
PELA 303	ex PELA 81	Officer	Officer Basin Energy Pty Ltd	20-Jun-2007	4,181	Under consideration
PELA 331	-	Simpson	Stuart Petroleum Limited	25-Jul-2007	9,797	Under consideration
PELA 332	-	Simpson	Tri-Star Energy Company	10-Aug-2007	9,905	Under consideration
PELA 333	-	Simpson	Tri-Star Energy Company	10-Aug-2007	9,883	Under consideration
PELA 334	-	Simpson	Tri-Star Energy Company	10-Aug-2007	9,807	Under consideration

Onshore exploration licence applications – petroleum (PELA)

Application number	Former area or ID number	Basin	Applicant(s)	Date of application	Area (km ²)	Status
PELA 335	-	Simpson	Tri-Star Energy Company	10-Aug-2007	9,923	Under consideration
PELA 351	-	Officer	Officer Basin Energy Pty Ltd	26-Aug-2007	9,693	Under consideration
Total area under application (km²)					252,868	

PELA - application for exploration licence for petroleum (including coal seam methane and in-situ gasification)

NOTE: Orange text entries throughout the document indicate changes since September 2007 edition of P1

Onshore retention licences – petroleum (PRL)

Licence number	Former licence area	Basin	Licensees	Structure	Expiry Date	Area (km ²)
PRL 1	PEL 32	Otway	Origin Energy Resources Ltd** Sagasco Southeast Inc	Wynn	09-Jan-2010	3.7
PRL 2	PEL 32	Otway	Origin Energy Resources Ltd** Sagasco Southeast Inc	Limestone Ridge	27-Apr-2010	1.69
PRL 13	PEL 27	Otway	Beach Petroleum Limited** Origin Energy Resources Ltd Essential Petroleum Resources Ltd	Killanoola	30-Jan-2012	17.5
PRL 14	PEL 103	Cooper	Innamincka Petroleum Limited**	Flax	13-May-2012	21.9
Total area under licence (km²)						44.79

PRL - retention licences for petroleum (including coal seam methane and in-situ gasification)

** denotes low level official supervision operator

NOTE: Orange text entries throughout the document indicate changes since September 2007 edition of P1

Offshore exploration permits for petroleum – (EPP)

Permit number	Basin	Licence holder(s)	Interest (%)	Expiry date	No of graticular blocks
EPP 27 [^]	Otway	Great Artesian Oil and Gas Limited	40.00	24-Feb-2008	67
		Oilex NL*	20.00		
		Videocon Industries Ltd	20.00		
		Gujarat State Petroleum Corporation Limited	20.00		
EPP 28	Bight	Woodside Energy Ltd*	90.00	Expired	
		Dana Petroleum (E&P) Limited	10.00		
EPP 29	Bight	Woodside Energy Ltd*	90.00	Expired	
		Dana Petroleum (E&P) Limited	10.00		
EPP 30	Bight	Woodside Energy Ltd*	90.00	Expired	
		Dana Petroleum (E&P) Limited	10.00		
EPP 31	Duntroon	Woodside Energy Ltd*	90.00	26-Jun-2008	80
		Dana Petroleum (E&P) Limited	10.00		
EPP 32	Duntroon	Santos Offshore Pty Ltd	100.00	Surrendered	
EPP 33	Otway	Kerr-McGee NW Shelf Australia Energy Pty Ltd*	50.00	18-Dec-2009	80
		Kerr-McGee Australia Exploration and Production Pty Ltd	50.00		
EPP 34	Otway	Exoil Limited*	25.00	24-Mar-2010	76
		United Oil & Gas Pty Ltd	30.00		
		National Energy Pty Ltd	25.00		
		Moby Oil & Gas Limited	20.00		
EPP 35	Otway	Exoil Limited*	30.00	16-Aug-2012	32
		Gascorp Australia Limited	30.00		
		Moby Oil & Gas Limited	20.00		
		National Energy Pty Ltd	20.00		
EPP 36	Otway	Exoil Limited*	30.00	16-Aug-2012	68
		Gascorp Australia Limited	30.00		
		Moby Oil & Gas Limited	20.00		
		National Energy Pty Ltd	20.00		
Total number of blocks					403

* Operator

[^] Suspended 25 February 2007 to 24 February 2008

NOTE: Orange text entries throughout the document indicate changes since September 2007 edition of P1

Associated facilities licences – (AFL)

Licence number	Basin	Licence holder(s)	Adjunct to Licence	Expiry date	Area (km ²)	Further renewals permitted
AFL 17	Cooper	Beach Petroleum Limited* Cooper Energy Limited	PPL 205	N/A	0.002	N/A
AFL 18	Cooper	Beach Petroleum Limited* Cooper Energy Limited	PPL 205	N/A	2.1	N/A
AFL 56	Cooper	Santos Ltd** Santos Petroleum Pty Ltd Santos (BOL) Pty Ltd Vamgas Pty Ltd Reef Oil Pty Ltd Alliance Petroleum Australia Pty Ltd Bridge Oil Developments Pty Ltd Delhi Petroleum Pty Ltd Origin Energy Resources Ltd Basin Oil Pty Ltd Santos (NARNL Cooper) NL	PPL 20	N/A	2.80	N/A
AFL 57	Cooper	As for AFL 56		N/A	2.90	N/A
AFL 58	Cooper	As for AFL 56		N/A	4.00	N/A
AFL 59	Cooper	As for AFL 56		N/A	4.50	N/A
AFL 60	Cooper	As for AFL 56		N/A	4.90	N/A
AFL 61	Cooper	As for AFL 56		N/A	3.60	N/A
AFL 62	Cooper	As for AFL 56		N/A	5.00	N/A
AFL 63	Cooper	As for AFL 56		N/A	4.40	N/A
AFL 64	Cooper	As for AFL 56		N/A	4.60	N/A
AFL 65	Cooper	As for AFL 56		N/A	4.90	N/A
AFL 66	Cooper	As for AFL 56		N/A	1.70	N/A
AFL 67	Cooper	As for AFL 56		N/A	4.30	N/A
AFL 68	Cooper	As for AFL 56		N/A	4.80	N/A
AFL 69	Cooper	As for AFL 56		N/A	4.80	N/A
AFL 71	Cooper	Great Artesian Oil and Gas Limited	PEL 106	8-Apr-2008	Surrendered 10 Oct 2007	
AFL 72	Cooper	Great Artesian Oil and Gas Limited	PEL 106	8-Apr-2008	Surrendered 10 Oct 2007	
AFL 73	Cooper	Great Artesian Oil and Gas Limited	PEL 106	8-Apr-2008	Surrendered 10 Oct 2007	
AFL 74	Cooper	Great Artesian Oil and Gas Limited	PEL 106	8-Apr-2008	Surrendered 10 Oct 2007	
AFL 75	Cooper	Great Artesian Oil and Gas Limited	PEL 106	8-Apr-2008	Surrendered 10 Oct 2007	
AFL 76	Cooper	Great Artesian Oil and Gas Limited	PEL 106	8-Apr-2008	Surrendered 10 Oct 2007	

Associated facilities licences – (AFL)

Licence number	Basin	Licence holder(s)	Adjunct to Licence	Expiry date	Area (km ²)	Further renewals permitted
AFL 77	Cooper	Great Artesian Oil and Gas Limited	PEL 106	8-Apr-2008	Surrendered 10 Oct 2007	
AFL 78	Cooper	Great Artesian Oil and Gas Limited	PEL 106	8-Apr-2008	Surrendered 10 Oct 2007	
AFL 79	Cooper	Great Artesian Oil and Gas Limited	PEL 106	8-Apr-2008	Surrendered 10 Oct 2007	
AFL 80	Cooper	Great Artesian Oil and Gas Limited	PEL 106	8-Apr-2008	Surrendered 10 Oct 2007	
AFL 81	Cooper	Great Artesian Oil and Gas Limited	PEL 106	8-Apr-2008	Surrendered 10 Oct 2007	
AFL 82	Cooper	Beach Petroleum Limited* Cooper Energy Limited	PPL 205	N/A	1.97	N/A
AFL 83	Cooper	Beach Petroleum Limited** Great Artesian Oil and Gas Limited Magellan Petroleum (Southern) Pty Ltd	PEL 107	1-Dec-2008	0.4	1
AFL 84	Cooper	Santos Ltd Vamgas Pty Ltd Alliance Petroleum Australia Pty Ltd Reef Oil Pty Ltd Santos Petroleum Pty Ltd Bridge Oil Developments Pty Ltd Santos (BOL) Pty Ltd Origin Energy Resources Ltd Delhi Petroleum Pty Ltd Basin Oil Pty Ltd Santos (NARNL Cooper) Pty Ltd	PPL 33	N/A	4.70	N/A
AFL 85	Cooper	As for AFL 84	PPL 33	N/A	4.10	N/A
AFL 86	Cooper	As for AFL 84	PPL 33	N/A	4.10	N/A
AFL 87	Cooper	As for AFL 84	PPL 33	N/A	5.00	N/A
AFL 88	Cooper	As for AFL 84	PPL 33	N/A	4.80	N/A
AFL 89	Cooper	As for AFL 84	PPL 33	N/A	4.90	N/A
AFL 90	Cooper	As for AFL 84	PPL 33	N/A	4.70	N/A
AFL 91	Cooper	As for AFL 84	PPL 33	N/A	4.90	N/A
AFL 92	Cooper	As for AFL 84	PPL 33	N/A	4.20	N/A
AFL 93	Cooper	As for AFL 84	PPL 33	N/A	4.80	N/A
AFL 98	Cooper	Beach Petroleum Limited Cooper Energy Limited	PPL 220	N/A	2.18	N/A
AFL 99	Cooper	Victoria Oil Exploration (1977) Pty Ltd* Permian Oil Pty Ltd Springfield Oil and Gas Pty Ltd Impress (Cooper Basin) Pty Ltd	PEL 104	14-Aug-2008	4.58	1

Associated facilities licences – (AFL)

Licence number	Basin	Licence holder(s)	Adjunct to Licence	Expiry date	Area (km ²)	Further renewals permitted
AFL 100	Cooper	Victoria Oil Exploration (1977) Pty Ltd* Permian Oil Pty Ltd Springfield Oil and Gas Pty Ltd Impress (Cooper Basin) Pty Ltd	PEL 104	14-Aug-2008	1.86	1
Total area (km²)					116.49	

* Operator

NOTE: Orange text entries throughout the document indicate changes since September 2007 edition of P1

Associated facilities licence applications – (AFLA)

Application number	Basin	Applicant(s)	Adjunct to Licence	Date of application	Area (km ²)	Status
AFLA 40	Cooper	Stuart Petroleum Limited	PPL 208	7-Feb-2006		Application withdrawn
AFLA 98	Cooper	Bach Petroleum Limited	PPL 220	19-Sep-2007		Granted
AFLA 99	Cooper	Cooper Energy Limited Victoria Oil Exploration (1977) Pty Ltd*	PEL 104	16-Oct-2007		Granted
AFLA 100	Cooper	Permian Oil Pty Ltd Springfield Oil and Gas Pty Ltd Impress (Cooper Basin) Pty Ltd Victoria Oil Exploration (1977) Pty Ltd*	PEL 104	16-Oct-2007		Granted
AFLA 101	Otway	Permian Oil Pty Ltd Springfield Oil and Gas Pty Ltd Impress (Cooper Basin) Pty Ltd Adelaide Energy Limited	PEL 255	5-Nov-2007	4.19	Offered
AFLA 102	Otway	Adelaide Energy Limited	PEL 255	5-Nov-2007	3.75	Offered
AFLA 103	Otway	Adelaide Energy Limited	PEL 255	5-Nov-2007	4.55	Offered
AFLA 104	Otway	Adelaide Energy Limited	PEL 255	5-Nov-2007	4.77	Offered
AFLA 105	Otway	Adelaide Energy Limited	PEL 255	5-Nov-2007	1.21	Offered
AFLA 106	Otway	Adelaide Energy Limited	PEL 255	5-Nov-2007	0.38	Offered
AFLA 107	Otway	Adelaide Energy Limited	PEL 255	5-Nov-2007	1.59	Offered
AFLA 108	Otway	Adelaide Energy Limited	PEL 255	5-Nov-2007	3.61	Offered
AFLA 109	Otway	Adelaide Energy Limited	PEL 255	5-Nov-2007	4.43	Offered
AFLA 110	Otway	Adelaide Energy Limited	PEL 255	5-Nov-2007	2.86	Offered
AFLA 111	Cooper	Santos Ltd** Vamgas Pty Ltd Alliance Petroleum Australia Pty Ltd Reef Oil Pty Ltd Santos Petroleum Pty Ltd Bridge Oil Developments Pty Ltd Santos (BOL) Pty Ltd Origin Energy Resources Ltd Delhi Petroleum Pty Ltd Basin Oil Pty Ltd Santos (NARNL Cooper) Pty Ltd	PPL 25	20-Nov-2007	4.20	Under consideration
AFLA 112	Cooper	As for AFLA 111	PPL 25	20-Nov-2007	4.70	Under consideration
AFLA 113	Cooper	As for AFLA 111	PPL 25	20-Nov-2007	4.60	Under consideration
AFLA 114	Cooper	As for AFLA 111	PPL 25	20-Nov-2007	4.60	Under consideration
AFLA 115	Cooper	As for AFLA 111	PPL 25	20-Nov-2007	4.80	Under consideration

Associated facilities licence applications – (AFLA)

Application number	Basin	Applicant(s)	Adjunct to Licence	Date of application	Area (km ²)	Status
AFLA 116	Cooper	As for AFLA 111	PPL 25	20-Nov-2007	4.90	Under consideration
AFLA 117	Cooper	As for AFLA 111	PPL 25	20-Nov-2007	4.90	Under consideration
AFLA 118	Cooper	As for AFLA 111	PPL 25	20-Nov-2007	4.90	Under consideration
AFLA 119	Cooper	As for AFLA 111	PPL 25	20-Nov-2007	4.50	Under consideration
AFLA 120	Cooper	As for AFLA 111	PPL 25	20-Nov-2007	4.50	Under consideration
AFLA 121	Cooper	As for AFLA 111	PPL 25	20-Nov-2007	4.50	Under consideration
AFLA 122	Cooper	As for AFLA 111	PPL 25	20-Nov-2007	4.40	Under consideration
AFLA 123	Cooper	As for AFLA 111	PPL 25	20-Nov-2007	4.40	Under consideration
AFLA 124	Cooper	As for AFLA 111	PPL 25	20-Nov-2007	4.30	Under consideration
AFLA 125	Cooper	As for AFLA 111	PPL 25	20-Nov-2007	4.40	Under consideration
AFLA 126	Cooper	As for AFLA 111	PPL 25	20-Nov-2007	4.80	Under consideration
AFLA 127	Cooper	As for AFLA 111	PPL 25	20-Nov-2007	4.50	Under consideration
AFLA 128	Cooper	Beach petroleum Limited Cooper Energy Limited	PPL 205	29-Nov-2007	0.0049	Under consideration
Total area (km²)					109.24	

* Operator

NOTE: Orange text entries throughout the document indicate changes since September 2007 edition of P1

Onshore exploration licences – geothermal (GEL)

Licence number	Former area or ID number	Licence holder and/or operator(s)	Interest (%) [†]	Expiry date	Area (km ²)	Further renewals permitted	Minimum area to relinquish upon renewal (km ²) [†]
GEL 99	HDR 2000-C	Geodynamics Ltd	100.00	21-Oct-2008	496	1	248
GEL 128	14/2000	Green Heat Resources Pty Ltd*	50.00	01-Jun-2009	308	2	103
		Green Rock Geothermal Pty Ltd	50.00				
GEL 129	15/2000	Green Heat Resources Pty Ltd*	50.00	01-Jun-2009	408	2	136
		Green Rock Geothermal Pty Ltd	50.00				
GEL 156	-	MNGI Pty Ltd	100.00	22-Nov-2009	498	2	166
GEL 157	-	MNGI Pty Ltd	100.00	16-Feb-2010	496	2	165
GEL 158	-	MNGI Pty Ltd	100.00	20-Jan-2009	499	2	166
GEL 161	-	Green Heat Resources Pty Ltd*	50.00	01-Jun-2009	496	2	165
		Green Rock Geothermal Pty Ltd	50.00				
GEL 162	-	Green Heat Resources Pty Ltd*	50.00	01-Jun-2009	488	2	163
		Green Rock Geothermal Pty Ltd	50.00				
GEL 163	-	Green Heat Resources Pty Ltd*	50.00	01-Jun-2009	497	2	166
		Green Rock Geothermal Pty Ltd	50.00				
GEL 166	-	Eden Energy Pty Ltd	100.00	12-Jul-2010	491	2	164
GEL 167	-	Eden Energy Pty Ltd	100.00	12-Jul-2010	498	2	166
GEL 168	-	Eden Energy Pty Ltd	100.00	12-Jul-2010	468	2	156
GEL 169	-	Eden Energy Limited	100.00	08-May-2010	498	2	166
GEL 170	-	Scopenergy Limited	100.00	21-Nov-2009	500	2	167
GEL 171	-	Scopenergy Limited	100.00	21-Nov-2009	498	2	166
GEL 172	-	Scopenergy Limited	100.00	21-Nov-2009	497	2	166
GEL 173	-	Scopenergy Limited	100.00	21-Nov-2009	498	2	166
GEL 175	-	Eden Energy Limited	100.00	22-May-2010	499	2	166
GEL 176	-	Eden Energy Limited	100.00	22-May-2010	495	2	165
GEL 177	-	Eden Energy Limited	100.00	09-Jan-2010	497	2	166
GEL 178	-	MNGI Pty Ltd	100.00	22-Nov-2009	498	2	166
GEL 179	-	MNGI Pty Ltd	100.00	16-Feb-2010	500	2	167
GEL 180	-	MNGI Pty Ltd	100.00	22-Nov-2009	500	2	167
GEL 181	-	Geothermal Resources Limited	100.00	21-Nov-2009	497	2	166
GEL 184	-	Scopenergy Limited	100.00	21-Nov-2009	499	2	166
GEL 185	-	Eden Energy Limited	100.00	13-Apr-2010	494	2	247
GEL 191	-	Pacific Hydro Limited	100.00	01-May-2010	496	2	165
GEL 192	-	Pacific Hydro Limited	100.00	01-May-2010	498	2	166
GEL 193	-	Pacific Hydro Limited	100.00	01-May-2010	497	2	166
GEL 194	-	Pacific Hydro Limited	100.00	01-May-2010	496	2	165
GEL 195	-	Pacific Hydro Limited	100.00	01-May-2010	498	2	166

Onshore exploration licences – geothermal (GEL)

Licence number	Former area or ID number	Licence holder and/or operator(s)	Interest (%) [†]	Expiry date	Area (km ²)	Further renewals permitted	Minimum area to relinquish upon renewal (km ²) [†]
GEL 196	-	Pacific Hydro Limited	100.00	01-May-2010	497	2	166
GEL 197	-	Pacific Hydro Limited	100.00	01-May-2010	496	2	165
GEL 198	-	Pacific Hydro Limited	100.00	01-May-2010	498	2	166
GEL 199	-	Pacific Hydro Limited	100.00	01-May-2010	497	2	166
GEL 200	-	Pacific Hydro Limited	100.00	01-May-2010	496	2	165
GEL 201	-	Pacific Hydro Limited	100.00	01-May-2010	498	2	166
GEL 202	-	Pacific Hydro Limited	100.00	01-May-2010	497	2	166
GEL 203	-	Pacific Hydro Limited	100.00	01-May-2010	496	2	165
GEL 204	-	Pacific Hydro Limited	100.00	01-May-2010	498	2	166
GEL 205	-	Pacific Hydro Limited	100.00	01-May-2010	497	2	166
GEL 206	-	Green Heat Resources Pty Ltd*	50.00	01-Jun-2010	494	2	165
		Green Rock Geothermal Pty Ltd	50.00				
GEL 207	-	Granite Power Limited	100.00	18-Jul-2010	386	2	129
GEL 208	-	Geothermal Resources Limited	100.00	10-Aug-2010	498	2	166
GEL 209	-	Geothermal Resources Limited	100.00	10-Aug-2010	499	2	166
GEL 210	-	Geothermal Resources Limited	100.00	10-Aug-2010	500	2	167
GEL 211	-	Geodynamics Limited	100.00	13-Nov-2010	481	2	160
GEL 212	-	Scopenergy Limited	100.00	21-Nov-2010	142	2	47
GEL 213	-	Green Rock Energy Limited	100.00	01-Jun-2011	206	2	69
GEL 214	-	Geothermal Resources Limited	100.00	11-Jul-2011	490	2	163
GEL 215	-	Geothermal Resources Limited	100.00	11-Jul-2011	493	2	164
GEL 216	-	Geothermal Resources Limited	100.00	11-Jul-2011	495	2	165
GEL 217	-	Geothermal Resources Limited	100.00	11-Jul-2011	476	2	159
GEL 220	-	Osiris Energy Pty Ltd	100.00	23-Jul-2011	466	2	155
GEL 221	-	Osiris Energy Pty Ltd	100.00	23-Jul-2011	483	2	161
GEL 222	-	Geothermal Resources Limited	100.00	19-Mar-2011	464	2	155
GEL 223	-	Osiris Energy Pty Ltd	100.00	23-Jul-2012	493	2	164
GEL 226	-	Torrens Energy Limited	100.00	23-Jan-2012	495	2	165
GEL 227	-	Torrens Energy Limited	100.00	23-Jan-2012	490	2	163
GEL 228	-	Torrens Energy Limited	100.00	23-Jan-2012	491	2	164
GEL 229	-	Torrens Energy Limited	100.00	04-Jul-2011	492	2	164
GEL 230	-	Torrens Energy Limited	100.00	04-Jul-2011	485	2	162
GEL 231	-	Torrens Energy Limited	100.00	04-Jul-2011	496	2	165
GEL 232	-	Torrens Energy Limited	100.00	04-Jul-2011	492	2	164
GEL 233	-	Torrens Energy Limited	100.00	04-Jul-2011	492	2	164
GEL 234	-	Torrens Energy Limited	100.00	04-Jul-2011	494	2	165

Onshore exploration licences – geothermal (GEL)

Licence number	Former area or ID number	Licence holder and/or operator(s)	Interest (%) [†]	Expiry date	Area (km ²)	Further renewals permitted	Minimum area to relinquish upon renewal (km ²) [†]
GEL 235	-	Torrens Energy Limited	100.00	04-Jul-2011	492	2	164
GEL 236	-	Pacific Hydro Limited	100.00	01-May-2011	486	2	162
GEL 237	-	Pacific Hydro Limited	100.00	01-May-2011	359	2	120
GEL 238	-	Pacific Hydro Limited	100.00	01-May-2011	478	2	159
GEL 241	-	MNGI Pty Ltd	100.00	25-Feb-2012	477	2	159
GEL 242	-	MNGI Pty Ltd	100.00	25-Feb-2012	440	2	147
GEL 244	-	Green Rock Energy Limited	100.00	14-Nov-2012	246	2	82
GEL 245	-	Green Rock Energy Limited	100.00	14-Nov-2012	341	2	114
GEL 246	-	Green Rock Energy Limited	100.00	14-Nov-2012	391	2	130
GEL 247	-	Green Rock Energy Limited	100.00	14-Nov-2012	470	2	157
GEL 248	-	Green Rock Energy Limited	100.00	14-Nov-2012	490	2	163
GEL 249	-	Geothermal Resources Limited	100.00	31-Oct-2011	497	2	166
GEL 250	-	Geothermal Resources Limited	100.00	31-Oct-2011	497	2	166
GEL 254	-	MNGI Pty Ltd	100.00	22-Nov-2011	498	2	166
GEL 260	-	Torrens Energy Limited	100.00	23-Jan-2012	440	2	147
GEL 261	-	Torrens Energy Limited	100.00	23-Jan-2012	482	2	161
GEL 262	-	Torrens Energy Limited	100.00	23-Jan-2012	296	2	99
GEL 263	-	Torrens Energy Limited	100.00	23-Jan-2012	490	2	163
GEL 264	-	Tri-Star Energy Company	100.00	13-Aug-2012	497	2	166
GEL 265	-	Tri-Star Energy Company	100.00	13-Aug-2012	497	2	166
GEL 267	-	Clean Energy Australasia Pty Ltd	100.00	22-May-2012	498	2	166
GEL 268	-	Clean Energy Australasia Pty Ltd	100.00	22-May-2012	497	2	166
GEL 269	-	Clean Energy Australasia Pty Ltd	100.00	22-May-2012	496	2	165
GEL 270	-	Clean Energy Australasia Pty Ltd	100.00	22-May-2012	496	2	165
GEL 271	-	Clean Energy Australasia Pty Ltd	100.00	22-May-2012	494	2	165
GEL 272	-	Clean Energy Australasia Pty Ltd	100.00	22-May-2012	498	2	166
GEL 273	-	Clean Energy Australasia Pty Ltd	100.00	22-May-2012	498	2	166
GEL 274	-	Clean Energy Australasia Pty Ltd	100.00	22-May-2012	497	2	166
GEL 275	-	Clean Energy Australasia Pty Ltd	100.00	22-May-2012	495	2	165
GEL 276	-	Clean Energy Australasia Pty Ltd	100.00	22-May-2012	497	2	166
GEL 277	-	Clean Energy Australasia Pty Ltd	100.00	22-May-2012	491	2	164
GEL 278	-	Torrens Energy Limited	100.00	04-Jul-2012	489	2	163
GEL 279	-	Geothermal Resources Limited	100.00	28-Jun-2012	482	2	161
GEL 280	-	Geothermal Resources Limited	100.00	28-Jun-2012	483	2	161
GEL 281	-	Osiris Energy Pty Ltd	100.00	13-Nov-2012	482	2	161
GEL 282	-	Green Rock Energy Limited	100.00	16-Aug-2012	496	2	165

Onshore exploration licences – geothermal (GEL)

Licence number	Former area or ID number	Licence holder and/or operator(s)	Interest (%)†	Expiry date	Area (km ²)	Further renewals permitted	Minimum area to relinquish upon renewal (km ²)†
GEL 283	-	Green Rock Energy Limited	100.00	16-Aug-2012	497	2	166
GEL 284	-	Green Rock Energy Limited	100.00	16-Aug-2012	490	2	163
GEL 285	-	Torrens Energy Limited	100.00	04-Jul-2012	417	2	139
GEL 336	-	MNGI Pty Ltd	100.00	19-Sep-2012	408	2	136
Total area (km²)					50,126		

[Click here to access Public Licence Register website for details of interests](#)

GEL geothermal exploration licence

* denotes operator

** denotes low level official supervision operator

† rounded to nearest whole number

NOTE: Orange text entries throughout the document indicate changes since September 2007 edition of P1

Onshore exploration licence applications – geothermal (GELA)

Licence number	Former area or ID number	Applicant(s)	Date of application	Area (km ²)	Status
GELA 164	14/2000	Green Heat Resources Pty Ltd* Green Rock Geothermal Pty Ltd	18-Oct-2000	192	Under consideration
GELA 165	15/2000	Green Heat Resources Pty Ltd* Green Rock Geothermal Pty Ltd	18-Oct-2000	90	Under consideration
GELA 243	-	Green Rock Energy Limited	19-Jun-2006	459	Under consideration
GELA 244	-	Green Rock Energy Limited	19-Jun-2006	246	Granted
GELA 245	-	Green Rock Energy Limited	19-Jun-2006	341	Granted
GELA 246	-	Green Rock Energy Limited	19-Jun-2006	391	Granted
GELA 247	-	Green Rock Energy Limited	19-Jun-2006	470	Granted
GELA 248	-	Green Rock Energy Limited	19-Jun-2006	490	Granted
GELA 266	-	Torrens Energy Limited	06-Sep-2006	76	Under consideration
GELA 281	-	Osiris Energy Pty Ltd	10-Apr-2007	482	Granted
GELA 287	-	J.F. Allender Basgrove Holdings Lynka Pty Ltd Anthony Frances Greve LeBrun	16-Apr-2007	497	Under consideration
GELA 291	-	Granite Power Limited	22-May-2007	491	Offered to applicant
GELA 293	-	Torrens Energy Limited	04-May-2007	80	Offered to applicant
GELA 294	-	Teck Cominco Australia Pty Ltd	13-Jun-2007	494	Offered to applicant
GELA 295	-	Teck Cominco Australia Pty Ltd	13-Jun-2007	495	Offered to applicant
GELA 296	-	Callabonna Energy Pty Ltd	14-Jun-2007	497	Under consideration
GELA 297	-	Inferus Resources Pty Ltd Uranium West Pty Ltd	19-Jun-2007	498	Under consideration
GELA 300	-	Inferus Resources Pty Ltd Uranium West Pty Ltd	19-Jun-2007	499	Under consideration
GELA 301	-	Inferus Resources Pty Ltd Uranium West Pty Ltd	19-Jun-2007	498	Under consideration
GELA 302	-	Inferus Resources Pty Ltd Uranium West Pty Ltd	19-Jun-2007	499	Under consideration
GELA 304	-	Callabonna Energy Pty Ltd	14-Jun-2007	497	Under consideration
GELA 305	-	Callabonna Energy Pty Ltd	14-Jun-2007	473	Under consideration
GELA 306	-	Callabonna Energy Pty Ltd	14-Jun-2007	428	Under consideration
GELA 307	-	Callabonna Energy Pty Ltd	14-Jun-2007	481	Under consideration
GELA 308	-	Deep Energy Ltd	22-Jun-2007	481	Under consideration
GELA 309	-	Tri-Star Energy Company	22-Jun-2007	481	Under consideration
GELA 310	-	Tri-Star Energy Company	22-Jun-2007	473	Under consideration
GELA 311	-	Deep Energy Ltd	27-Jun-2007	471	Under consideration
GELA 312	-	Deep Energy Ltd	27-Jun-2007	479	Under consideration

Onshore exploration licence applications – geothermal (GELA)

Licence number	Former area or ID number	Applicant(s)	Date of application	Area (km ²)	Status
GELA 313	-	Deep Energy Ltd	27-Jun-2007	487	Under consideration
GELA 314	-	Deep Energy Ltd	27-Jun-2007	461	Under consideration
GELA 315	-	Deep Energy Ltd	27-Jun-2007	484	Under consideration
GELA 316	-	Clean Energy Australasia Pty Ltd	05-Jul-2007	496	Under consideration
GELA 317	-	Clean Energy Australasia Pty Ltd	05-Jul-2007	496	Under consideration
GELA 318	-	Clean Energy Australasia Pty Ltd	05-Jul-2007	497	Under consideration
GELA 319	-	Clean Energy Australasia Pty Ltd	05-Jul-2007	496	Under consideration
GELA 320	-	Clean Energy Australasia Pty Ltd	05-Jul-2007	462	Under consideration
GELA 322	-	Clean Energy Australasia Pty Ltd	12-Jul-2007	468	Under consideration
GELA 323	-	Clean Energy Australasia Pty Ltd	12-Jul-2007	498	Under consideration
GELA 324	-	Clean Energy Australasia Pty Ltd	12-Jul-2007	498	Under consideration
GELA 325	-	Green Rock Energy Limited	10-Jul-2007	482	Under consideration
GELA 326	-	Green Rock Energy Limited	10-Jul-2007	486	Under consideration
GELA 327	-	Green Rock Energy Limited	10-Jul-2007	489	Under consideration
GELA 328	-	Green Rock Energy Limited	10-Jul-2007	429	Under consideration
GELA 329	-	Eden Energy Limited	18-Jul-2007	497	Offered to applicant
GELA 330	-	Eden Energy Limited	18-Jul-2007	496	Offered to applicant
GELA 336	-	MNGI Pty Ltd	15-Aug-2007	408	Granted
GELA 337	-	Earth Heat Pty Ltd	31-Aug-2007	499	Under consideration
GELA 338	-	Earth Heat Pty Ltd	31-Aug-2007	497	Under consideration
GELA 339	-	Earth Heat Pty Ltd	31-Aug-2007	500	Under consideration
GELA 340	-	AAA Energy Pty Ltd	31-Aug-2007	494	Under consideration
GELA 341	-	AAA Energy Pty Ltd	31-Aug-2007	494	Under consideration
GELA 342	-	AAA Energy Pty Ltd	31-Aug-2007	499	Under consideration
GELA 343	-	AAA Energy Pty Ltd	31-Aug-2007	496	Under consideration
GELA 344	-	AAA Energy Pty Ltd	31-Aug-2007	496	Under consideration
GELA 345	-	AAA Energy Pty Ltd	31-Aug-2007	484	Under consideration
GELA 346	-	AAA Energy Pty Ltd	31-Aug-2007	499	Under consideration
GELA 347	-	AAA Energy Pty Ltd	31-Aug-2007	499	Under consideration
GELA 348	-	AAA Energy Pty Ltd	31-Aug-2007	494	Under consideration
GELA 349	-	Green Rock Energy Limited	19-Jun-2006	229	Under consideration
GELA 350	-	Callabonna Energy Pty Ltd	17-Sep-2007	500	Under consideration
GELA 352	-	New World Energy Solutions	08-Oct-2007	496	Under consideration
GELA 353	-	New World Energy Solutions	08-Oct-2007	497	Under consideration
GELA 354	-	Gradient Energy Australia Pty Ltd	16-Nov-2007	488	Under consideration
GELA 355	-	Gradient Energy Australia Pty Ltd	16-Nov-2007	498	Under consideration
GELA 356	-	Gradient Energy Australia Pty Ltd	16-Nov-2007	497	Under consideration
GELA 357	-	Gradient Energy Australia Pty Ltd	16-Nov-2007	498	Under consideration

Onshore exploration licence applications – geothermal (GELA)

Licence number	Former area or ID number	Applicant(s)	Date of application	Area (km ²)	Status
GELA 358	-	Gradient Energy Australia Pty Ltd	16-Nov-2007	497	Under consideration
GELA 359	-	Gradient Energy Australia Pty Ltd	16-Nov-2007	497	Under consideration
GELA 360	-	Gradient Energy Australia Pty Ltd	16-Nov-2007	497	Under consideration
GELA 361	-	Gradient Energy Australia Pty Ltd	16-Nov-2007	497	Under consideration
GELA 362		Gradient Energy Australia Pty Ltd	16-Nov-2007	498	Under consideration
GELA 363		Gradient Energy Australia Pty Ltd	16-Nov-2007	479	Under consideration
GELA 364		Gradient Energy Australia Pty Ltd	16-Nov-2007	498	Under consideration
GELA 365		Gradient Energy Australia Pty Ltd	16-Nov-2007	479	Under consideration
GELA 377		Gradient Energy Australia Pty Ltd	21-Nov-2007	179	Under consideration
GELA 378	-	Stuart Petroleum Limited	06-Dec-2007	468	Under consideration
GELA 379	-	Stuart Petroleum Limited	06-Dec-2007	483	Under consideration
GELA 380	-	Stuart Petroleum Limited	06-Dec-2007	467	Under consideration
GELA 381	-	Stuart Petroleum Limited	06-Dec-2007	146	Under consideration
GELA 382	-	Stuart Petroleum Limited	06-Dec-2007	488	Under consideration
GELA 383	-	Stuart Petroleum Limited	06-Dec-2007	496	Under consideration
GELA 384	-	Stuart Petroleum Limited	06-Dec-2007	484	Under consideration
GELA 385	-	Stuart Petroleum Limited	06-Dec-2007	488	Under consideration
GELA 386		Stuart Petroleum Limited	06-Dec-2007	492	Under consideration
GELA 387		Stuart Petroleum Limited	06-Dec-2007	496	Under consideration
GELA 388		Stuart Petroleum Limited	06-Dec-2007	496	Under consideration
GELA 389		Stuart Petroleum Limited	06-Dec-2007	493	Under consideration
Total area under application (km²)				39,951	

GELA application for exploration licence for geothermal energy

NOTE: Orange text entries throughout the document indicate changes since September 2007 edition of P1

Onshore retention licences – geothermal (GRL)

Licence number	Former licence area	Basin	Licensee(s)	Expiry Date	Area (km ²)
GRL 3	GEL 98	Cooper	Geodynamics Limited	10-May-2012	100
GRL 4	GEL 98	Cooper	Geodynamics Limited	10-May-2012	96
GRL 5	GEL 98	Cooper	Geodynamics Limited	10-May-2012	100
GRL 6	GEL 98	Cooper	Geodynamics Limited	10-May-2012	99
GRL 7	GEL 98	Cooper	Geodynamics Limited	10-May-2012	100
GRL 8	GEL 97	Cooper	Geodynamics Limited	10-May-2012	99
GRL 9	GEL 97	Cooper	Geodynamics Limited	10-May-2012	94
GRL 10	GEL 97	Cooper	Geodynamics Limited	10-May-2012	99
GRL 11	GEL 97	Cooper	Geodynamics Limited	10-May-2012	99
GRL 12	GEL 97	Cooper	Geodynamics Limited	10-May-2012	100
Total area under licence (km²)					986

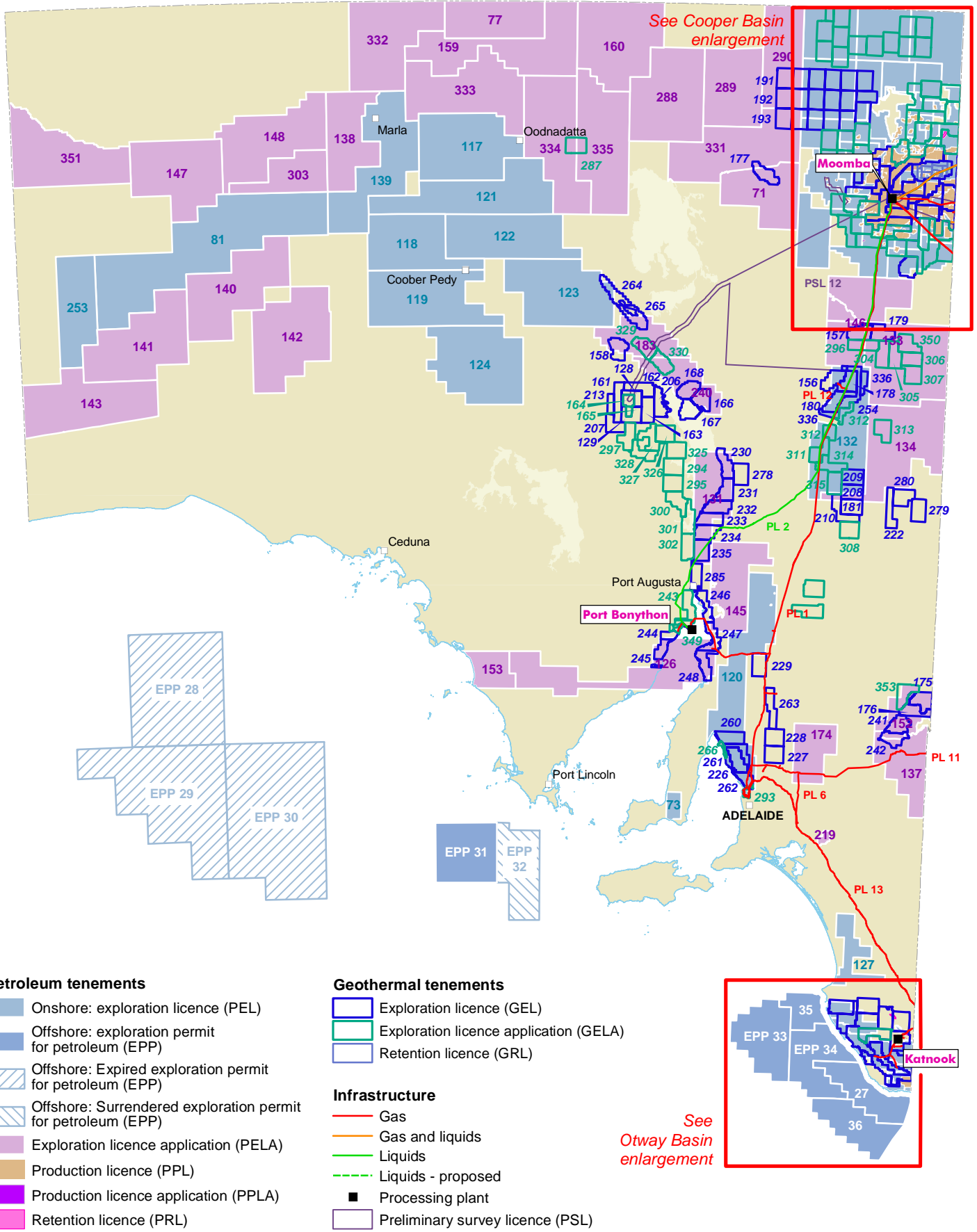
GRL - retention licence for geothermal

** denotes low level official supervision operator

NOTE: Orange text entries throughout the document indicate changes since September 2007 edition of P1



South Australia PETROLEUM ACT TENEMENTS



Petroleum tenements

- Onshore: exploration licence (PEL)
- Offshore: exploration permit for petroleum (EPP)
- Offshore: Expired exploration permit for petroleum (EPP)
- Offshore: Surrendered exploration permit for petroleum (EPP)
- Exploration licence application (PELA)
- Production licence (PPL)
- Production licence application (PPLA)
- Retention licence (PRL)

Geothermal tenements

- Exploration licence (GEL)
- Exploration licence application (GELA)
- Retention licence (GRL)

Infrastructure

- Gas
- Gas and liquids
- Liquids
- Liquids - proposed
- Processing plant
- Preliminary survey licence (PSL)

Production details

Produced by: PIRSA Publishing Services

Plan number: 203542_002

Date produced: December 2007

Data source: databases maintained by PIRSA Spatial Information Services

0 100 200 Kilometres

Datum GDA 94 - Projection Equidistant Conic

Disclaimer

There is no warranty that this map is free from errors or omissions.
Issued under the authority of the Hon Paul Holloway MLC
Selected data on this map are available digitally and can be downloaded from www.pir.sa.gov.au
© Primary Industries and Resources SA 2007

Author / contact details

Alexander, E.
PIRSA Petroleum, 101 Grenfell Street,
Adelaide, South Australia 5000
internet: www.petroleum.pir.sa.gov.au
email: pirsa.petroleum@saugov.sa.gov.au
phone: (08) 8463 3000
fax: (08) 8463 3229



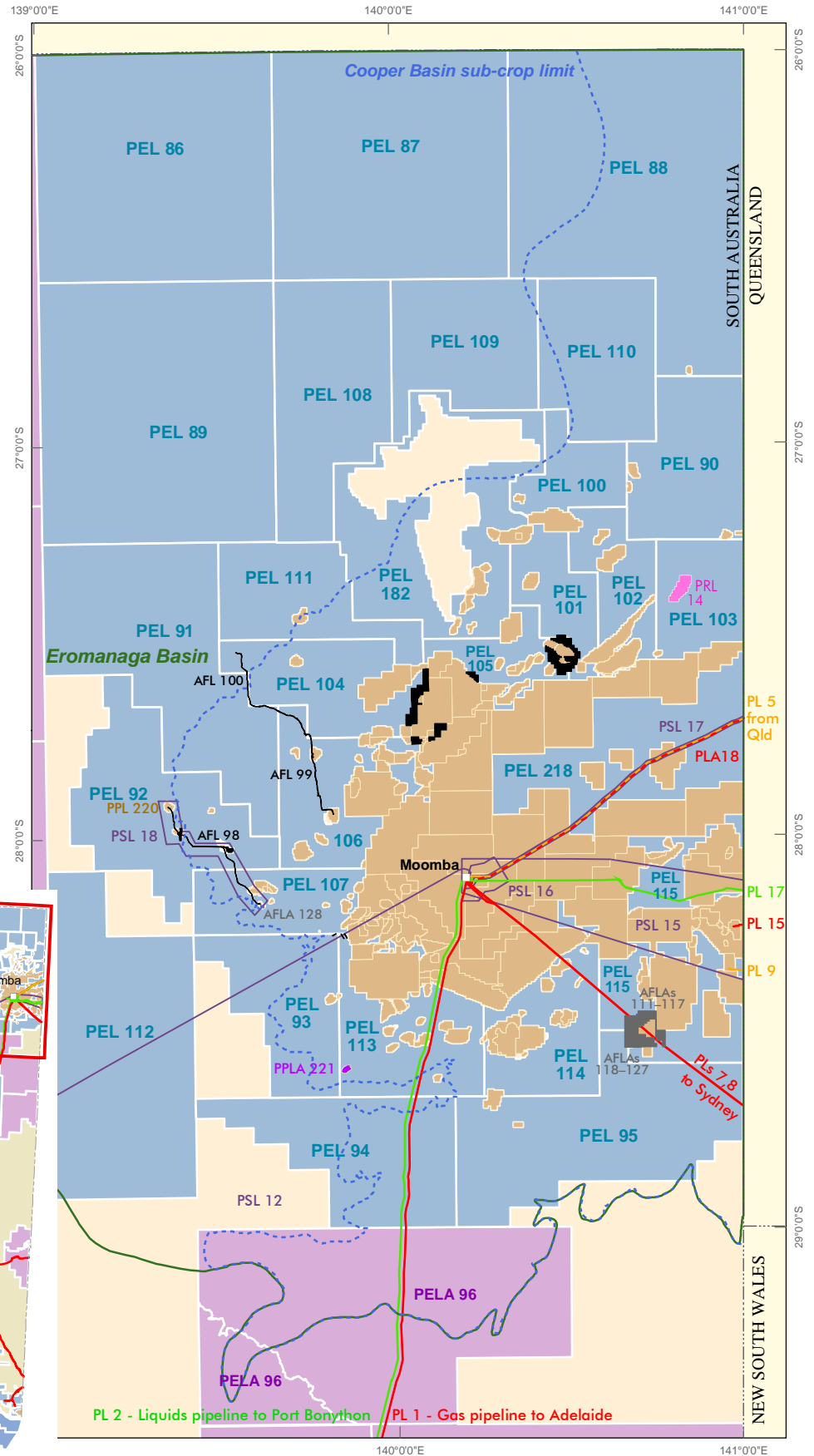
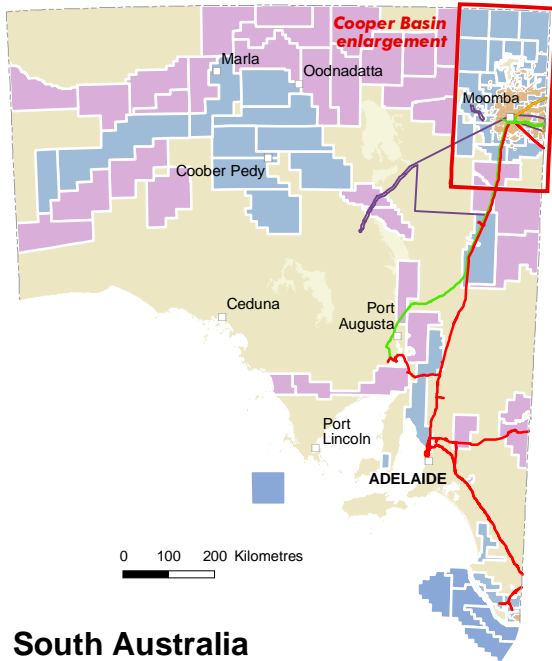
Cooper and Eromanga Basins, South Australia PETROLEUM TENEMENTS

Petroleum tenements

- Onshore: exploration licence (PEL)
- Offshore: exploration permit for petroleum (EPP)
- Exploration licence application (PELA)
- Production licence (PPL)
- Production licence application (PPLA)
- Retention licence (PRL)
- Retention licence application (PRLA)
- Preliminary survey licence (PSL)
- Preliminary survey licence application (PSLA)
- Associated facility licence (AFL)
- Associated facility licence application (AFLA)

Infrastructure

- Pipeline licence (PL) – gas
- Pipeline licence (PL) – gas and liquids
- Pipeline licence (PL) – liquids
- Pipeline licence application (PLA) – proposed gas



South Australia

Production details

Produced by: PIRSA Publishing Services

Plan number: 203542_003

Date produced: December 2007

Data source: databases maintained by PIRSA Spatial Information Services

Disclaimer

There is no warranty that this map is free from errors or omissions.
Issued under the authority of the Hon Paul Holloway MLC
Selected data on this map are available digitally and can be downloaded from www.pir.sa.gov.au

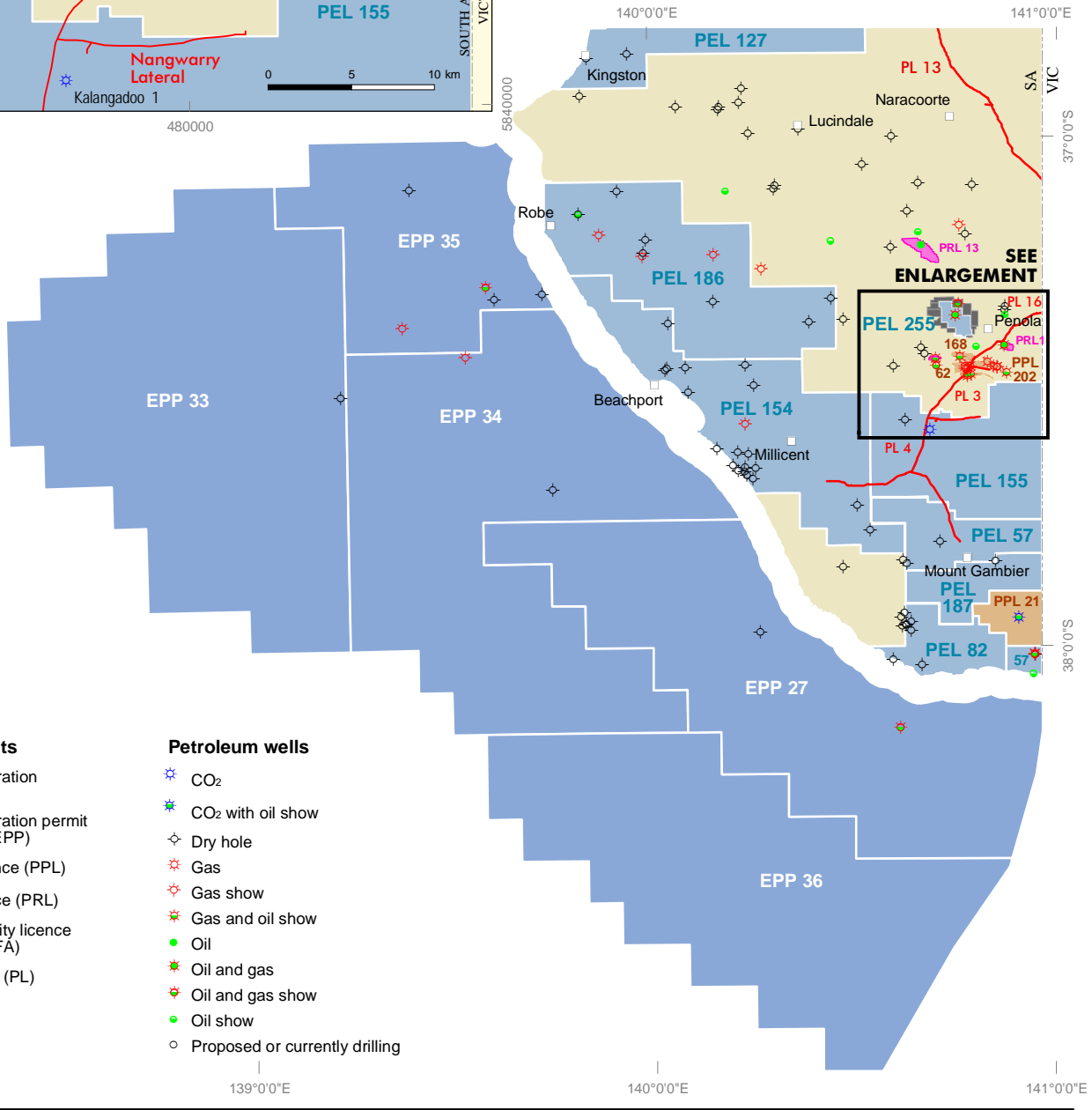
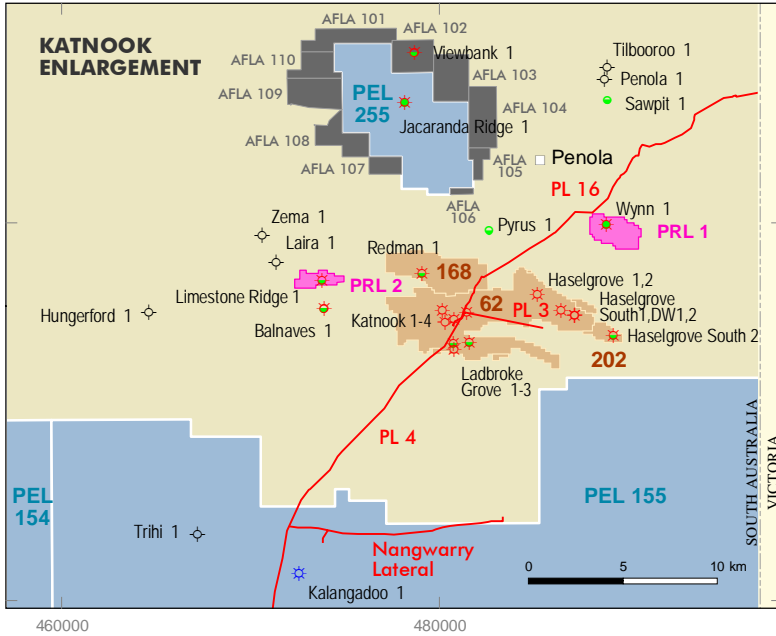
© Primary Industries and Resources SA 2007

Author / contact details

Alexander, E.
PIRSA Petroleum, 101 Grenfell Street,
Adelaide, South Australia 5000
internet: www.petroleum.pir.sa.gov.au
email: pirsa.petroleum@saugov.sa.gov.au
phone: (08) 8463 3000
fax: (08) 8463 3229



Otway Basin – South Australia PETROLEUM TENEMENTS



- Petroleum tenements**
- Onshore: exploration licence (PEL)
 - Offshore: exploration permit for petroleum (EPP)
 - Production licence (PPL)
 - Retention licence (PRL)
 - Associated facility licence application (ALFA)
 - Pipeline licence (PL)

- Petroleum wells**
- CO₂
 - CO₂ with oil show
 - Dry hole
 - Gas
 - Gas show
 - Gas and oil show
 - Oil
 - Oil and gas
 - Oil and gas show
 - Oil show
 - Proposed or currently drilling

Production details
Produced by: PIRSA Publishing Services
Plan number: 203542_004
Date produced: December 2007
Data source: databases maintained by PIRSA Spatial Information Services

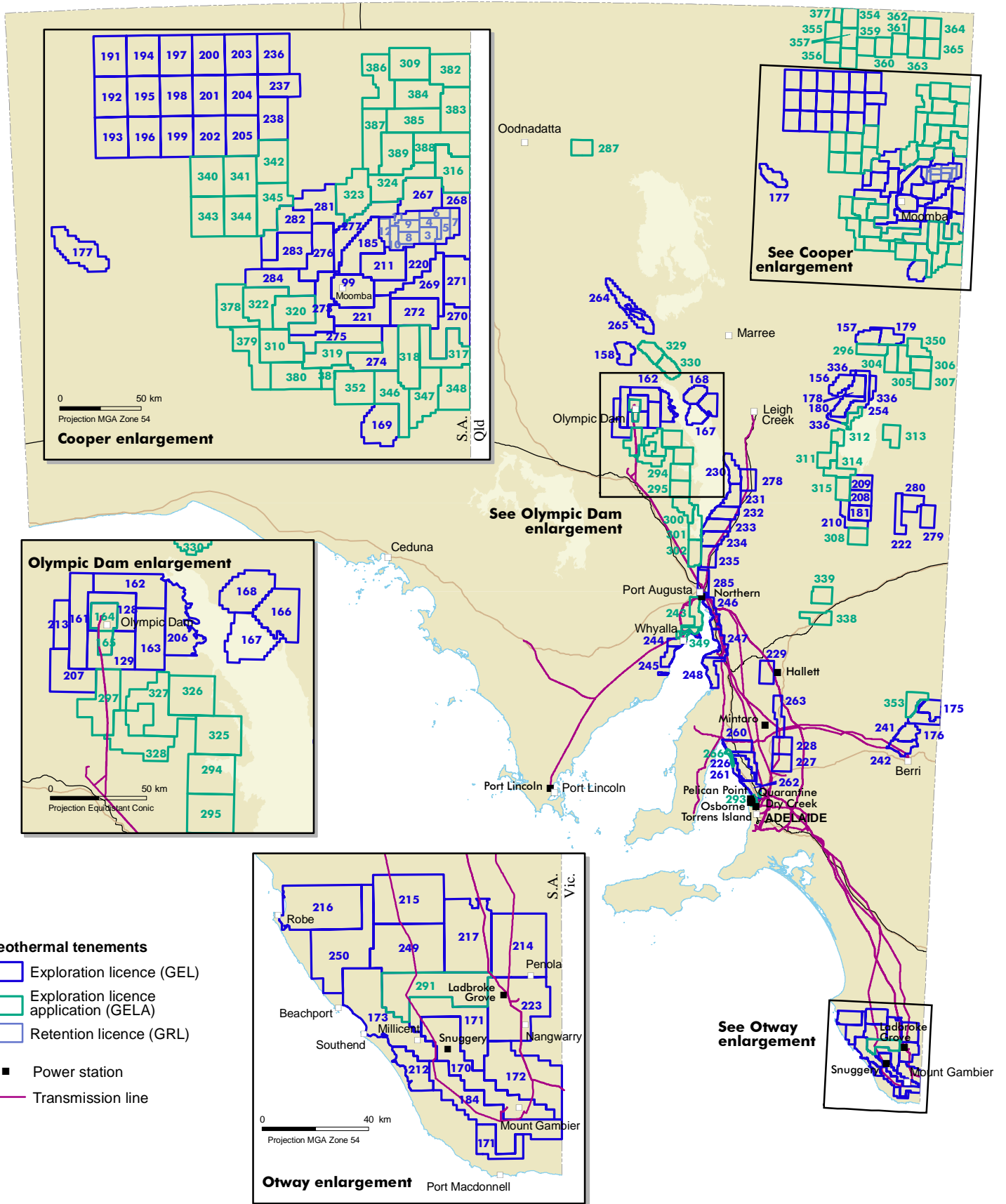
0 20 40 Kilometres
Datum GDA 94 - Projection MGA Zone 54

Disclaimer
There is no warranty that this map is free from errors or omissions.
Issued under the authority of the Hon Paul Holloway MLC
Selected data on this map are available digitally and can be downloaded from www.pir.sa.gov.au

Author / contact details
Alexander, E.
PIRSA Petroleum, 101 Grenfell Street,
Adelaide, South Australia 5000
internet: www.petroleum.pir.sa.gov.au
email: pirsa.petroleum@saugov.sa.gov.au
phone: (08) 8463 3000
fax: (08) 8463 3229



South Australia GEOTHERMAL TENEMENTS



Geothermal tenements

- Exploration licence (GEL)
- Exploration licence application (GELA)
- Retention licence (GRL)
- Power station
- Transmission line

Production details

Produced by: PIRSA Publishing Services

Plan number: 203542_007

Date produced: December 2007

Data source: databases maintained by PIRSA Spatial Information Services

0 100 200 Kilometres
Datum GDA 94 - Projection Equidistant Conic

Disclaimer

There is no warranty that this map is free from errors or omissions.
Issued under the authority of the Hon Paul Holloway MLC
Selected data on this map are available digitally and can be downloaded from www.pir.sa.gov.au
© Primary Industries and Resources SA 2007

Author / contact details

Alexander, E.
PIRSA Petroleum, 101 Grenfell Street,
Adelaide, South Australia 5000
internet: www.petroleum.pir.sa.gov.au
email: pirsa.petroleum@saugov.sa.gov.au
phone: (08) 8463 3000
fax: (08) 8463 3229

Petroleum production licences – (PPL)

Licence number	Licence holder(s)	Interest (%) ^{††}	Expiry date	Anniversary date	Area (km ²) [†]	Name of field
PPL 6	Santos Ltd**	40.70	31-Dec-2005 ^{##}	1-Jan	257.4	Gidgealpa
	Vamgas Pty Ltd	8.51				
	Alliance Petroleum Australia Pty Ltd	3.97				
	Reef Oil Pty Ltd	1.97				
	Santos Petroleum Pty Ltd	0.40				
	Bridge Oil Developments Pty Ltd	3.99				
	Santos (BOL) Pty Ltd	0.21				
	Origin Energy Resources Ltd	13.19				
	Delhi Petroleum Pty Ltd	20.21				
	Basin Oil Pty Ltd	2.10				
	Santos (NARNL Cooper) Pty Ltd	4.75				
PPL 7	As for PPL 6	As for PPL 6	31-Dec-2005 ^{##}	1-Jan	254.2	Moomba North
PPL 8	As for PPL 6	As for PPL 6	31-Dec-2005 ^{##}	1-Jan	254.0	Moomba West
PPL 9	As for PPL 6	As for PPL 6	31-Dec-2005 ^{##}	1-Jan	133.0	Moomba South
PPL 10	As for PPL 6	As for PPL 6	31-Dec-2005 ^{##}	1-Jan	226.4	Daralingie
PPL 11	As for PPL 6	As for PPL 6	31-Dec-2005 ^{##}	1-Jan	160.1	Big Lake
PPL 12	As for PPL 6	As for PPL 6	31-Dec-2005 ^{##}	1-Jan	157.3	Burke-Dullingari
PPL 13	As for PPL 6	As for PPL 6	31-Dec-2005 ^{##}	1-Jan	56.1	Brumby
PPL 14	As for PPL 6	As for PPL 6	31-Dec-2005 ^{##}	1-Jan	233.0	Toolachee
PPL 15	As for PPL 6	As for PPL 6	31-Dec-2005 ^{##}	1-Jan	154.3	Della
PPL 16	As for PPL 6	As for PPL 6	31-Dec-2005 ^{##}	1-Jan	126.9	Big Lake & Namur
PPL 17	As for PPL 6	As for PPL 6	31-Dec-2005 ^{##}	1-Jan	141.0	Merrimelia
PPL 18	As for PPL 6	As for PPL 6	31-Dec-2005 ^{##}	1-Jan	109.4	Fly Lake-Brolga
PPL 19	As for PPL 6	As for PPL 6	31-Dec-2005 ^{##}	1-Jan	36.5	Moorari
PPL 20	As for PPL 6	As for PPL 6	31-Dec-2005 ^{##}	1-Jan	129.7	Tirrawarra
PPL 21	Air Liquide Australia Ltd**	100.00	30-Apr-2021	1-May	145.0	Caroline
PPL 22	As for PPL 6	As for PPL 6	31-Dec-2006 ^{##}	1-Jan	233.8	Strzelecki
PPL 23	As for PPL 6	As for PPL 6	31-Dec-2006 ^{##}	1-Jan	79.9	Munkarie
PPL 24	As for PPL 6	As for PPL 6	31-Dec-2006 ^{##}	1-Jan	167.7	Kidman
PPL 25	As for PPL 6	As for PPL 6	31-Dec-2006 ^{##}	1-Jan	19.6	Narcoonowie
PPL 26	Vamgas Pty Ltd	43.75	10-Jun-2007 ^{##}	11-Jun	3.6	Cuttapirrie
	Santos Ltd**	25.60				
	Delhi Petroleum Pty Ltd	17.14				
	Origin Energy Resources Ltd	10.54				
	Santos (NARNL Cooper) Pty Ltd	2.97				
PPL 27	As for PPL 6	As for PPL 6	31-Dec-2006 ^{##}	1-Jan	23.4	Mudrangie

Petroleum production licences – (PPL)

Licence number	Licence holder(s)	Interest (%) ^{††}	Expiry date	Anniversary date	Area (km ²) [†]	Name of field
PPL 28	As for PPL 6	As for PPL 6	06-May-2007 ^{##}	7-May	15.7	Kanowana
PPL 29	As for PPL 6	As for PPL 6	31-Dec-2008	1-Jan	3.0	Rakoona
PPL 30	As for PPL 6	As for PPL 6	31-Dec-2006 ^{##}	1-Jan	48.6	Limestone Creek-Biala
PPL 31	As for PPL 6	As for PPL 6	06-May-2007 ^{##}	7-May	5.7	Wancoocha
PPL 32	As for PPL 6	As for PPL 6	06-May-2007 ^{##}	7-May	5.7	Muteroo
PPL 33	As for PPL 6	As for PPL 6	31-Dec-2006 ^{##}	1-Jan	15.4	Bookabourdie
PPL 34	As for PPL 6	As for PPL 6	31-Dec-2006 ^{##}	1-Jan	9.5	McKinlay
PPL 35	As for PPL 6	As for PPL 6	31-Dec-2006 ^{##}	1-Jan	21.3	Meranji
PPL 36	As for PPL 6	As for PPL 6	31-Dec-2006 ^{##}	1-Jan	47.0	Ulandi/Alwyn/Jena
PPL 37	As for PPL 6	As for PPL 6	06/10/2007 ^{##}	7-Oct	7.6	Spencer
PPL 38	As for PPL 6	As for PPL 6	06/10/2007 ^{##}	7-Oct	10.2	Dirkala
PPL 39	As for PPL 6	As for PPL 6	31-Dec-2006 ^{##}	1-Jan	1.5	Nungeroo
PPL 40	As for PPL 6	As for PPL 6	31/12/2007 ^{##}	1-Jan	10.6	Lepena
PPL 41	As for PPL 6	As for PPL 6	31-Dec-2011	1-Jan	20.3	Mundi/Kapinka
PPL 42	As for PPL 6	As for PPL 6	31-Dec-2008	1-Jan	7.3	Bookabourdie(Extension)
PPL 43	As for PPL 6	As for PPL 6	31-Dec-2008	1-Jan	3.3	Taylor South
PPL 44	As for PPL 6	As for PPL 6	31-Dec-2008	1-Jan	5.2	Bimbaya
PPL 45	As for PPL 6	As for PPL 6	29-Mar-2010	30-Mar	1.3	Taloola
PPL 46	As for PPL 6	As for PPL 6	20-Dec-2009	21-Dec	2.0	Tantanna
PPL 47	As for PPL 6	As for PPL 6	20-Dec-2009	21-Dec	3.5	Sturt & Sturt East
PPL 48	As for PPL 6	As for PPL 6	31-Dec-2010	1-Jan	2.1	Kurunda
PPL 49	As for PPL 6	As for PPL 6	31-Dec-2010	1-Jan	8.1	Leleptian
PPL 50	As for PPL 6	As for PPL 6	31-Dec-2009	1-Jan	17.3	Andree
PPL 51	As for PPL 6	As for PPL 6	31-Dec-2011	1-Jan	6.9	Kirralee
PPL 52	As for PPL 6	As for PPL 6	31-Dec-2009	1-Jan	1.6	Gooranie South
PPL 53	As for PPL 6	As for PPL 6	04-Dec-2010	5-Dec	1.8	Spencer West
PPL 54	As for PPL 6	As for PPL 6	15-Jun-2010	16-Jun	0.1	Pintari North
PPL 55	As for PPL 6	As for PPL 6	31-Dec-2011	1-Jan	9.7	Varanus
PPL 56	As for PPL 6	As for PPL 6	31-Dec-2013	1-Jan	3.7	Varanus South
PPL 57	As for PPL 6	As for PPL 6	16-Jul-2011	17-Jul	10.5	Thurakinna
PPL 58	As for PPL 6	As for PPL 6	31-Dec-2010	1-Jan	14.9	Mettika
PPL 59	As for PPL 6	As for PPL 6	16-Jul-2011	17-Jul	10.5	Garanjanie
PPL 60	As for PPL 6	As for PPL 6	25-May-2014	26-May	6.5	Wirrarie North
PPL 61	As for PPL 6	As for PPL 6	17-Oct-2011	18-Oct	11.9	Arrakis-Murta
PPL 62	Origin Energy Resources Ltd** Sagasco Southeast Inc	44.29 55.71	26-Nov-2011	27-Nov	28.8	Katnook, Ladbroke & Haselgrove

Petroleum production licences – (PPL)

Licence number	Licence holder(s)	Interest (%) ^{††}	Expiry date	Anniversary date	Area (km ²) [†]	Name of field
PPL 63	As for PPL 6	As for PPL 6	23-May-2012	24-May	1.3	Malgoona East
PPL 64	As for PPL 6	As for PPL 6	23-May-2012	24-May	1.9	Malgoona West
PPL 65	As for PPL 6	As for PPL 6	17-Jul-2012	18-Jul	6.4	Kujani
PPL 66	As for PPL 6	As for PPL 6	24-Nov-2012	25-Nov	10.6	Jack Lake
PPL 67	As for PPL 6	As for PPL 6	17-Jul-2012	18-Jul	10.9	Keena
PPL 68	As for PPL 6	As for PPL 6	31-Dec-2011	1-Jan	14.1	Cooba
PPL 69	As for PPL 6	As for PPL 6	31-Dec-2011	1-Jan	11.6	Tarwonga
PPL 70	As for PPL 6	As for PPL 6	25-May-2014	26-May	5.7	Farina
PPL 71	As for PPL 6	As for PPL 6	31-Dec-2013	1-Jan	15.7	Kerna
PPL 72	As for PPL 6	As for PPL 6	31-Dec-2013	1-Jan	17.5	Dilchee/Pira
PPL 73	As for PPL 6	As for PPL 6	31-Dec-2015	1-Jan	1.1	Mudlalee
PPL 74	As for PPL 6	As for PPL 6	31-Dec-2015	1-Jan	4.7	Allambi
PPL 75	As for PPL 6	As for PPL 6	26-Oct-2016	27-Oct	6.5	Caladan
PPL 76	As for PPL 26	As for PPL 26	26-Oct-2016	27-Oct	3.4	Telopea
PPL 77	As for PPL 26	As for PPL 26	26-Oct-2016	27-Oct	9.7	Keleary
PPL 78	As for PPL 6	As for PPL 6	31-Dec-2016	1-Jan	5.6	Baratta
PPL 79	As for PPL 6	As for PPL 6	31-Dec-2016	1-Jan	2.4	Gahnia
PPL 80	As for PPL 6	As for PPL 6	31-Dec-2016	1-Jan	3.4	Correa
PPL 81	As for PPL 6	As for PPL 6	31-Oct-2017	1-Nov	4.4	Caladan Northeast
PPL 82	As for PPL 6	As for PPL 6	31-Dec-2016	1-Jan	5.7	Waukatanna
PPL 83	As for PPL 6	As for PPL 6	31-Dec-2016	1-Jan	3.2	Pogona
PPL 84	As for PPL 6	As for PPL 6	06-Jun-2018	7-Jun	28.3	Barina
PPL 85	As for PPL 6	As for PPL 6	31-Dec-2017	1-Jan	3.4	Alisma
PPL 86	As for PPL 6	As for PPL 6	31-Dec-2017	1-Jan	2.3	Carmina
PPL 87	As for PPL 6	As for PPL 6	31-Dec-2017	1-Jan	5.4	Boobook
PPL 88	As for PPL 6	As for PPL 6	31-Dec-2017	1-Jan	2.5	Lycosa
PPL 89	As for PPL 6	As for PPL 6	31-Dec-2017	1-Jan	6.1	Bobs Well
PPL 90	As for PPL 6	As for PPL 6	31-Dec-2017	1-Jan	60.8	Packsaddle/Pondrinnie
PPL 91	As for PPL 6	As for PPL 6	31-Dec-2017	1-Jan	9.4	Cowralli
PPL 92	As for PPL 6	As for PPL 6	31-Dec-2017	1-Jan	1.8	Plantago
PPL 93	As for PPL 6	As for PPL 6	31-Dec-2017	1-Jan	7.4	Wilpinnie
PPL 94	As for PPL 6	As for PPL 6	08-Jan-2019	9-Jan	6.8	Atreides
PPL 95	As for PPL 6	As for PPL 6	21-May-2019	22-May	12.0	Nephrite
PPL 96	As for PPL 6	As for PPL 6	31-Dec-2017	1-Jan	2.7	Beckler
PPL 97	As for PPL 6	As for PPL 6	31-Dec-2017	1-Jan	2.5	Beckler South
PPL 98	As for PPL 6	As for PPL 6	31-Dec-2017	1-Jan	7.3	Merupa

Petroleum production licences – (PPL)

Licence number	Licence holder(s)	Interest (%) ^{††}	Expiry date	Anniversary date	Area (km ²) [†]	Name of field
PPL 99	As for PPL 6	As for PPL 6	31-Dec-2017	1-Jan	6.8	Merindal
PPL 100	As for PPL 6	As for PPL 6	31-Dec-2017	1-Jan	5.2	Nappacoongee
PPL 101	As for PPL 6	As for PPL 6	02-Nov-2018	3-Nov	214.4	Nappamerri Trough
PPL 102	As for PPL 6	As for PPL 6	02-Nov-2018	3-Nov	230.9	Nappamerri Trough
PPL 103	As for PPL 6	As for PPL 6	02-Nov-2018	3-Nov	258.3	Nappamerri Trough
PPL 104	As for PPL 6	As for PPL 6	02-Nov-2018	3-Nov	122.0	Nappamerri Trough
PPL 105	As for PPL 6	As for PPL 6	02-Nov-2018	3-Nov	169.0	Nappamerri Trough
PPL 106	As for PPL 6	As for PPL 6	02-Nov-2018	3-Nov	75.0	Nappamerri Trough
PPL 107	As for PPL 6	As for PPL 6	02-Nov-2018	3-Nov	217.2	Nappamerri Trough
PPL 108	As for PPL 6	As for PPL 6	02-Nov-2018	3-Nov	37.0	Nappamerri Trough
PPL 109	As for PPL 6	As for PPL 6	02-Nov-2018	3-Nov	39.0	Nappamerri Trough
PPL 110	As for PPL 6	As for PPL 6	02-Nov-2018	3-Nov	30.0	Nappamerri Trough
PPL 111	As for PPL 6	As for PPL 6	02-Nov-2018	3-Nov	85.0	Nappamerri Trough
PPL 113	As for PPL 6	As for PPL 6	02-Nov-2018	3-Nov	231.6	Nappamerri Trough
PPL 114	As for PPL 6	As for PPL 6	02-Nov-2018	3-Nov	165.0	Nappamerri Trough
PPL 115	As for PPL 6	As for PPL 6	02-Nov-2018	3-Nov	251.4	Nappamerri Trough
PPL 116	As for PPL 6	As for PPL 6	02-Nov-2018	3-Nov	178.0	Nappamerri Trough
PPL 117	As for PPL 6	As for PPL 6	02-Nov-2018	3-Nov	238.8	Nappamerri Trough
PPL 118	As for PPL 26	As for PPL 26	26-May-2019	27-May	0.4	Kudrieke North
PPL 119	As for PPL 6	As for PPL 6	31-Dec-2017	1-Jan	7.1	Kudrieke
PPL 120	As for PPL 6	As for PPL 6	31-Dec-2017	1-Jan	4.0	Lake MacMillan
PPL 121	As for PPL 26	As for PPL 26	26-May-2019	27-May	5.1	Tarragon
PPL 122	As for PPL 26	As for PPL 26	23-Sep-2019	24-Sep	6.3	Tallerangie
PPL 123	As for PPL 26	As for PPL 26	23-Sep-2019	24-Sep	5.4	Pennie
PPL 124	As for PPL 6	As for PPL 6	31-Dec-2018	1-Jan	5.0	Bindah
PPL 125	As for PPL 26	As for PPL 26	11-Feb-2020	12-Feb	8.8	Gudi
PPL 126	As for PPL 6	As for PPL 6	21-Feb-2020	22-Feb	1.2	Daralingie North
PPL 127	As for PPL 6	As for PPL 6	21-Feb-2020	22-Feb	4.2	Nulla
PPL 128	As for PPL 6	As for PPL 6	21-Feb-2020	22-Feb	0.3	Garanjanie West
PPL 129	As for PPL 6	As for PPL 6	20-Apr-2020	21-Apr	0.6	Thurakinna (South)
PPL 130	As for PPL 6	As for PPL 6	20-Apr-2020	21-Apr	0.6	Thurakinna (East)
PPL 131	As for PPL 26	As for PPL 26	20-Apr-2020	21-Apr	39.9	Coonatie
PPL 132	As for PPL 6	As for PPL 6	31-Dec-2019	1-Jan	0.6	Pondrinnie / Packsaddle South
PPL 133	As for PPL 6	As for PPL 6	31-Dec-2019	1-Jan	1.3	Pondrinnie/Packsaddle South West
PPL 134	As for PPL 6	As for PPL 6	31-Dec-2019	1-Jan	0.5	Pondrinnie / Packsaddle West
PPL 135	As for PPL 6	As for PPL 6	31-Dec-2019	1-Jan	11.1	Goyder Gasfield

Petroleum production licences – (PPL)

Licence number	Licence holder(s)	Interest (%) ^{††}	Expiry date	Anniversary date	Area (km ²) [†]	Name of field
PPL 136	As for PPL 26	As for PPL 26	17-Jun-2020	18-Jun	32.7	Cuttapirrie Main
PPL 137	As for PPL 6	As for PPL 6	25-May-2020	26-May	7.0	Moonanga
PPL 138	As for PPL 6	As for PPL 6	10-Aug-2020	11-Aug	24.6	Cabernet
PPL 139	As for PPL 6	As for PPL 6	31-Dec-2019	1-Jan	15.7	Milluna
PPL 140	As for PPL 6	As for PPL 6	31-Dec-2019	1-Jan	161.7	Nephrite South
PPL 141	As for PPL 6	As for PPL 6	31-Dec-2019	1-Jan	124.8	Greater Beckler
PPL 142	As for PPL 26	As for PPL 26	10-Aug-2020	11-Aug	27.7	Moolion North (East)
PPL 143	As for PPL 6	As for PPL 6	31-Dec-2019	1-Jan	92.6	Dorodillo
PPL 144	As for PPL 6	As for PPL 6	10-Aug-2020	11-Aug	7.3	Keena South West
PPL 145	As for PPL 6	As for PPL 6	10-Aug-2020	11-Aug	17.9	Koree/Koree South
PPL 146	As for PPL 6	As for PPL 6	31-Dec-2019	1-Jan	9.7	Balcaminga (MEI)
PPL 147	As for PPL 26	As for PPL 26	10-Aug-2020	22-Aug	3.3	Balcaminga (PE)
PPL 148	As for PPL 6	As for PPL 6	10-Aug-2020	11-Aug	8.3	Welcome Lake East
PPL 149	As for PPL 6	As for PPL 6	31-Dec-2019	1-Jan	33.4	Jalbu West
PPL 150	As for PPL 6	As for PPL 6	10-Aug-2020	11-Aug	20.9	Raven
PPL 151	As for PPL 6	As for PPL 6	31-Dec-2019	1-Jan	65.9	Napowie
PPL 152	As for PPL 26	As for PPL 26	10-Aug-2020	11-Aug	3.8	Napowie North
PPL 153	As for PPL 6	As for PPL 6	31-Dec-2019	1-Jan	42.9	Shiraz
PPL 154	As for PPL 6	As for PPL 6	31-Dec-2019	1-Jan	4.5	Ficus
PPL 155	As for PPL 6	As for PPL 6	10-Aug-2020	11-Aug	9.1	Bungee
PPL 156	As for PPL 26	As for PPL 26	10-Aug-2020	11-Aug	35.2	Beanbush
PPL 157	As for PPL 6	As for PPL 6	10-Aug-2020	11-Aug	2.9	Muscat
PPL 158	As for PPL 26	As for PPL 26	08-Aug-2020	9-Aug	66.8	Verona
PPL 159	As for PPL 6	As for PPL 6	22-Jul-2020	23-Jul	3.6	Touriga
PPL 160	As for PPL 6	As for PPL 6	22-Jul-2020	23-Jul	3.1	Mica
PPL 161	As for PPL 6	As for PPL 6	08-Aug-2020	9-Aug	6.5	Malgoona North West
PPL 162	As for PPL 6	As for PPL 6	08-Aug-2020	9-Aug	2.9	Greater Sturt/Sturt East
PPL 163	As for PPL 6	As for PPL 6	31-Dec-2019	1-Jan	0.3	Brumby South
PPL 164	As for PPL 6	As for PPL 6	31-Dec-2019	1-Jan	3.1	Packsaddle East
PPL 165	As for PPL 6	As for PPL 6	26-Aug-2020	27-Aug	3.6	Malgoona North East
PPL 166	As for PPL 6	As for PPL 6	31-Dec-2019	1-Jan	1.2	Taylor South East
PPL 167	As for PPL 26	As for PPL 26	02-Sep-2020	3-Sep	7.3	Moolion East
PPL 168	Origin Energy Resources Ltd** Sagasco Southeast Inc	44.29 55.71	25-Jun-2020	26-Jun	8.8	Redman
PPL 169	As for PPL 6	As for PPL 6	N/A	29-Jun	13.8	Allambi Extension
PPL 170	As for PPL 6	As for PPL 6	N/A	29-Jun	10.1	Andree/Leleptian/Reglet
PPL 171	As for PPL 6	As for PPL 6	N/A	15-May	23.6	Atreides Extension
PPL 172	As for PPL 6	As for PPL 6	N/A	15-May	126.8	Greater Moomba Big Lake (Yalcumma) Extension

Petroleum production licences – (PPL)

Licence number	Licence holder(s)	Interest (%) ^{††}	Expiry date	Anniversary date	Area (km ²) [†]	Name of field
PPL 173	As for PPL 6	As for PPL 6	N/A	1-May	134.8	Extension
PPL 174	As for PPL 6	As for PPL 6	N/A	29-Jun	13.3	Cactus/Deparanie
PPL 175	As for PPL 6	As for PPL 6	N/A	15-May	45.9	Caladan North Extension
PPL 176	As for PPL 6	As for PPL 6	N/A	29-Jun	8.2	Callabonna
PPL 177	As for PPL 6	As for PPL 6	N/A	29-Jun	12.0	Charo
PPL 178	As for PPL 6	As for PPL 6	N/A	29-Jun	8.8	Davren North
PPL 179	As for PPL 6	As for PPL 6	N/A	15-Jun	6.1	Fortanna
PPL 180	As for PPL 6	As for PPL 6	N/A	29-Jun	3.9	Gooranie (East)
PPL 181	As for PPL 6	As for PPL 6	N/A	15-May	18.4	Grenache
PPL 182	As for PPL 26	As for PPL 26	N/A	29-Jun	2.8	James
PPL 183	As for PPL 6	As for PPL 6	N/A	15-May	15.2	Kanowana South
PPL 184	As for PPL 6	As for PPL 6	N/A	29-Jun	2.3	Kerinna
PPL 185	As for PPL 6	As for PPL 6	N/A	15-May	33.7	Greater Kirrallee Extension
PPL 186	As for PPL 6	As for PPL 6	N/A	15-May	21.5	Kobari
PPL 187	As for PPL 26	As for PPL 26	N/A	29-Jun	16.8	Lamdina
PPL 188	As for PPL 6	As for PPL 6	N/A	15-May	16.0	McKinlay Extension
PPL 189	As for PPL 6	As for PPL 6	N/A	15-May	259.7	Greater Moomba Big Lake (Bauhaus-Allunga) Extension
PPL 190	As for PPL 6	As for PPL 6	N/A	15-May	232.0	Greater Moomba Big Lake (Merlot-Boobook) Extension
PPL 191	As for PPL 26	As for PPL 26	N/A	29-Jun	10.4	Moondie
PPL 192	As for PPL 6	As for PPL 6	N/A	15-May	23.4	Pirraminta-Haloragis
PPL 193	As for PPL 6	As for PPL 6	N/A	29-Jun	10.2	Quartpot
PPL 194	As for PPL 26	As for PPL 26	N/A	15-Jun	6.0	Reg Sprigg
PPL 195	As for PPL 6	As for PPL 6	N/A	15-Jun	7.6	Scrubby Creek
PPL 196	As for PPL 6	As for PPL 6	N/A	15-May	110.9	Tirrawarra-Moorari-Woolkina Extension (PE)
PPL 197	As for PPL 26	As for PPL 26	N/A	29-Jun	3.0	Tirrawarra-Moorari-Woolkina (East)
PPL 198	As for PPL 6	As for PPL 6	N/A	15-May	24.6	Wilpinnie Extension
PPL 199	As for PPL 6	As for PPL 6	N/A	22-Jun	12.8	Wooloo
PPL 200	As for PPL 26	As for PPL 26	N/A	30-Oct	1.7	Moolion North
PPL 201	As for PPL 26	As for PPL 26	N/A	30-Oct	4.9	Moolion
PPL 202	Origin Energy Resources Ltd**	44.29	N/A	2-Oct	2.3	Ladbroke Grove South/Haselgrove South
	Sagasco Southeast Inc	55.71				
PPL 203	Stuart Petroleum Limited*	75.00	N/A	12-Aug	2.0	Acrasia
	Mawson Petroleum Pty Limited	25.00				
PPL 204	Beach Petroleum Limited*	75.00	N/A	11-Sep	2.0	Sellicks
	Cooper Energy Limited	25.00				
PPL 205	Beach Petroleum Limited*	75.00	N/A	12-Oct	4.3	Christies/Silver Sands
	Cooper Energy Limited	25.00				
PPL 206	Santos Limited**	100.00	N/A	21-Aug	1.4	Derrilyn

Petroleum production licences – (PPL)

Licence number	Licence holder(s)	Interest (%) ^{††}	Expiry date	Anniversary date	Area (km ²) [†]	Name of field
PPL 207	Stuart Petroleum Limited*	70.00	N/A	4-Nov	6.4	Worrior
	Cooper Energy Limited	30.00				
PPL 208	Stuart Petroleum Limited*	100.00	N/A	12-Nov	0.3	Derrilyn West
PPL 209	Stuart Petroleum Limited*	66.67	N/A	25-May	3.6	Harpoons
	Beach Oil and Gas Pty Ltd	33.33				
PPL 210	Beach Petroleum Limited*	50.00	N/A	23-Dec	3.8	Aldinga
	Magellan Petroleum (NT) Pty Ltd	50.00				
PPL 211	Stuart Petroleum Limited*	75.00	N/A	2-Dec	0.12	Reg Sprigg West
	Mawson Petroleum Pty Limited	25.00				
PPL 212	Beach Petroleum Limited*	40.00	N/A	23-Jan	1.6	Kiana
	Great Artesian Oil and Gas Limited	30.00				
	Magellan Petroleum (NT) Pty Ltd	30.00				
PPL 213	Victoria Oil Exploration (1977) Pty Ltd*	40.00	N/A	25-Aug	9.7	Mirage
	Impress (Cooper Basin) Pty Ltd	25.00				
	Permian Oil Pty Ltd	20.00				
	Springfield Oil and Gas Pty Ltd	15.00				
PPL 214	Victoria Oil Exploration (1977) Pty Ltd*	40.00	N/A	25-Aug	1.6	Ventura
	Impress (Cooper Basin) Pty Ltd	25.00				
	Permian Oil Pty Ltd	20.00				
	Springfield Oil and Gas Pty Ltd	15.00				
PPL 215	Stuart Petroleum Limited*	100.00	N/A	24-Jan	0.9	Toporoa
PPL 217	Stuart Petroleum Limited*	100.00	N/A	8-Aug	0.8	Arwon West
PPL 218	Stuart Petroleum Limited*	100.00	N/A	8-Aug	0.6	Arwon East
PPL 220	Beach Petroleum Limited*	75.00	N/A	14-Sep	5.5	Callawonga
	Cooper Energy Limited	25.00				
Total area (km²)					8,590	

* denotes operator

** denotes low level official supervision operator

† rounded to first decimal place

†† rounded to second decimal place

Renewal application pending

NOTE: Orange text entries throughout the document indicate changes since September 2007 edition of P1

Petroleum production licence applications – (PPLA)

Licence number	Applicant	Interest (%) ^{††}	Area (km ²) [†]	Name of field	Status
PPLA 220	Beach Petroleum Limited	75.0		Callawonga	Granted
	Cooper Energy Ltd	25.0			
PPLA 221	Stuart Petroleum Limited	1.00	4.55	Padulla	Under consideration
Total area (km²)			4.55		

* denotes operator

** denotes low level official supervision operator

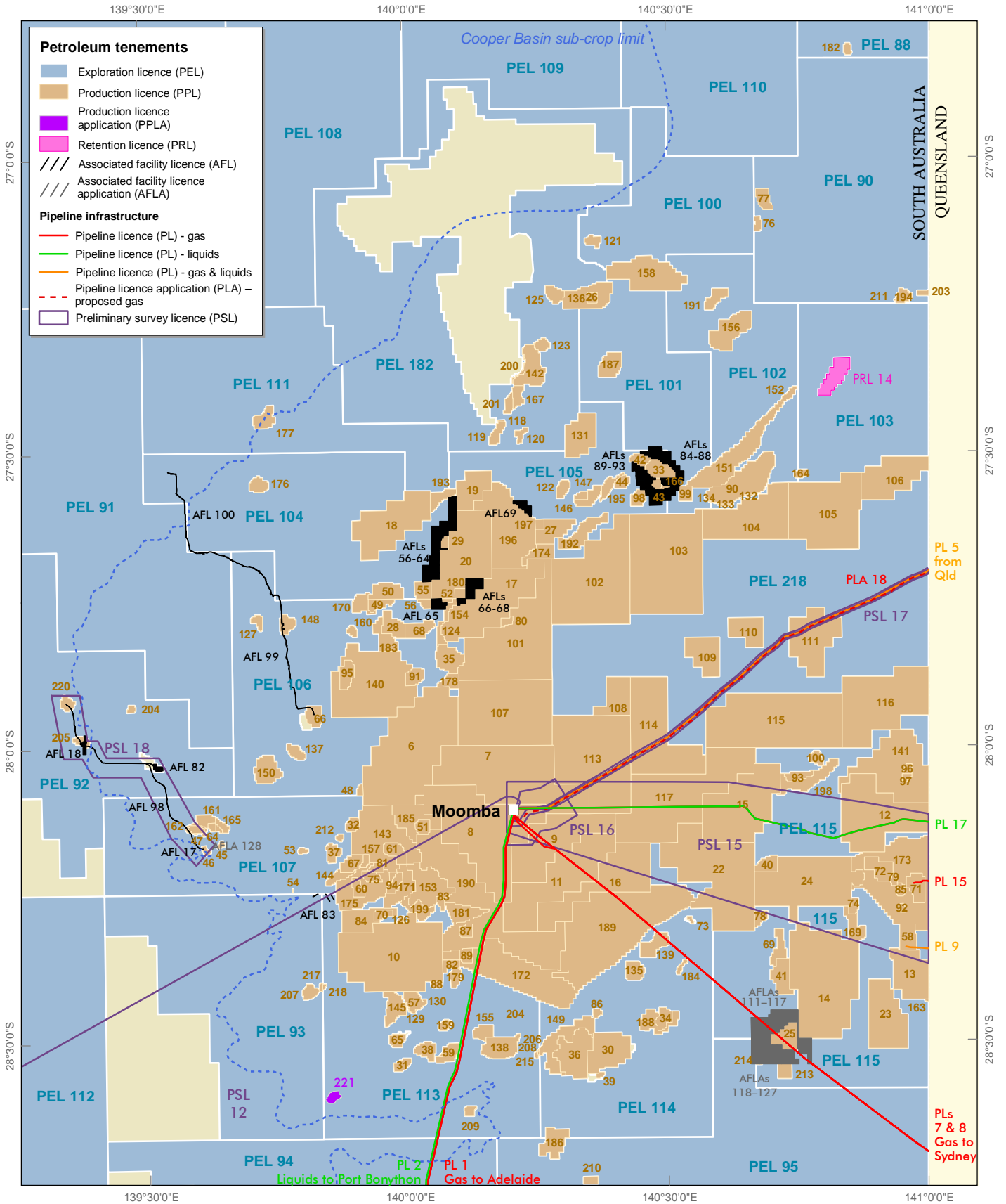
† rounded to first decimal place

†† rounded to second decimal place

NOTE: Orange text entries throughout the document indicate changes since September 2007 edition of P1



Cooper and Eromanga Basins, South Australia PETROLEUM TENEMENTS



Production details

Produced by: PIRSA Publishing Services

Plan number: 203542_005

Date produced: December 2007

Data source: databases maintained by PIRSA Spatial Information Services

Disclaimer

There is no warranty that this map is free from errors or omissions.
Issued under the authority of the Hon Paul Holloway MLC
Selected data on this map are available digitally and can be downloaded from www.pir.sa.gov.au

© Primary Industries and Resources SA 2007

Author / contact details

Alexander, E.
PIRSA Petroleum, 101 Grenfell Street,
Adelaide, South Australia 5000

internet: www.petroleum.pir.sa.gov.au
email: pirsa.petroleum@saugov.sa.gov.au
phone: (08) 8463 3000
fax: (08) 8463 3229

Pipeline information

Licence number	Name	Product	Commissioning date	Expiry date	Diameter (mm) [†]	MAOP* (kPa)	Length (km)
PL 1	Moomba - Adelaide	Natural Gas	1-Nov-1969	29-Jun-2016	559.0	7,322	1115.0
PL 2	Moomba - Port Bonython	Hydrocarbon/liquids	1-Jan-1983	25-Nov-2023	355.6	10,340	659.0
PL 3	Katnook - SAFRIES plant	Natural Gas	1-Mar-1991	29-Jun-2016	60.3	10,000	4.5
PL 4	Katnook - Mt Gambier/Snuggery	Natural Gas	1-Feb-1991	29-Jun-2016	168.0	10,000	80.0
PL 5	Queensland - Moomba	Natural Gas/liquids	1-Oct-1993	21-Apr-2013	400.0	14,500	92.0
PL 6	Riverland	Natural Gas	1-Oct-1994	26-Jan-2015	114.0	10,000	231.0
PL 7	Moomba - Sydney	Natural Gas	29-May-1976	29-Jun-2015	864.0	6,200	111.0
PL 8	Moomba - Sydney	Ethane	1-Jul-1996	9-Jul-2017	219.0	15,300	101.0
PL 9	South West Queensland - Mettika	Natural Gas	1-Apr-1996	16-Feb-2018	323.9	11,400	3.5
PL 10	Moomba Interconnection	Natural Gas	1-Apr-1999	29-Oct-2019	250.0	7,290	0.1
PL 11	Berri - Mildura	Natural Gas	1-Nov-1999	30-Apr-2020	114.0	9,928	42.3
PL 12	Beverley	Natural Gas	11-Jul-2000	15-Mar-2021	89.0	7,000	14.3
PL 13	Iona to Adelaide	Natural Gas	22-Dec-2003	11-Feb-2023	356.0	15,320	421.3
PL 15	SA/Qld Border - Kerna	Natural Gas	15-Feb-2003	5-Jan-2024	168.3	11,400	3.0
PL 16	SA/Vic Border - Katnook/Ladbroke Grove	Natural Gas	17-May-05	22-Feb-2026	219.0	10,210	22.8
PL 17	Ballera - Moomba	Hydrocarbon/liquids	TBA	29-Nov-2028	200.0	TBA	80.6
Total length (km)							2,981

* Maximum allowable operating pressure

NOTE: Orange text entries throughout the document indicate changes since September 2007 edition of P1

Pipeline licence holders – (PL)

Licence number	Licence holder(s)	Interest %	Operator
PL 1	Epic Energy SA Pty Ltd**	100.00	Epic Energy**
PL 2	Santos Ltd**	37.73	Epic Energy**
	Delhi Petroleum Pty Ltd	17.03	
	Origin Energy Resources Ltd	13.15	
	Bridge Oil Development Pty Ltd	8.81	
	Vamgas Pty Ltd	7.55	
	Reef Oil Pty Ltd	4.64	
	Basin Oil Pty Ltd	4.64	
	Santos (NARNL Cooper) Pty Ltd	3.93	
	Alliance Petroleum Aust Pty Ltd	1.55	
	Santos Petroleum Pty Ltd	0.50	
	Santos (BOL) Pty Ltd	0.46	
PL 3	Epic Energy SA Pty Ltd**	100.00	Epic Energy**
PL 4	Epic Energy SA Pty Ltd**	100.00	Epic Energy**
PL 5	Santos Ltd**	32.63	Santos Ltd**
	Delhi Petroleum Pty Ltd	23.20	
	Santos Petroleum Pty Ltd	18.72	
	Origin Energy Resources Ltd	16.50	
	Vamgas Pty Ltd	7.51	
	Santos Australian Hydrocarbons PL	1.20	
	Origin Energy CSG Limited	0.24	
PL 6	Envestra (SA) Ltd**	100.00	APT O&M Services Pty Ltd
PL 7	East-Aust Pipeline Ltd	100.00	Agility Management Pty Ltd**
PL 8	Gorodok Pty Ltd**	100.00	Agility Management Pty Ltd**

Pipeline licence holders – (PL)

Licence number	Licence holder(s)	Interest %	Operator
PL 9	Santos Ltd**	32.63	Santos Ltd**
	Delhi Petroleum Pty Ltd	23.20	
	Santos Petroleum Pty Ltd	18.72	
	Origin Energy Resources Ltd	16.50	
	Vamgas Pty Ltd	7.51	
	Santos Australian Hydrocarbons PL	1.20	
	Origin Energy CSG Limited	0.24	
PL 10	Origin Energy Pipelines Ltd**	100.00	Epic Energy**
PL 11	Envestra Ltd**	100.00	APT O&M Services Pty Ltd
PL 12	Heathgate Resources Pty Ltd**	100.00	Epic Energy**
PL 13	South East Australia Gas Pty Ltd**	100.00	SEAGas Pty Ltd**
PL 15	Santos Ltd**	32.63	Santos Ltd**
	Delhi Petroleum Pty Ltd	23.20	
	Santos Petroleum Pty Ltd	18.72	
	Vamgas Pty Ltd	7.51	
	Origin Energy Resources Ltd	16.50	
	Santos Australian Hydrocarbons Pty Ltd	1.20	
	Origin Energy CSG Limited	0.24	
PL 16	APT Pipelines (SA) Pty Limited	100.00	APT O&M Services Pty Ltd
PL 17	Santos Limited**	100.00	Santos Limited

** denotes low level official supervision operator

NOTE: Orange text entries throughout the document indicate changes since September 2007 edition of P1

Pipeline licence applications – (PLA)

Application number	Name	Applicant	Interest %	Date of application	Status
PLA 17	Tickalara to Moomba	Santos Ltd**	100.00	7-Aug-07	Granted
PLA 18	Ballera to Moomba	Epic Energy Queensland Pty Limited**	100.00	20-Nov-07	Under Consideration

** denotes low level official supervision operator

NOTE: Orange text entries throughout the document indicate changes since September 2007 edition of P1

Preliminary survey licence – (PSL)

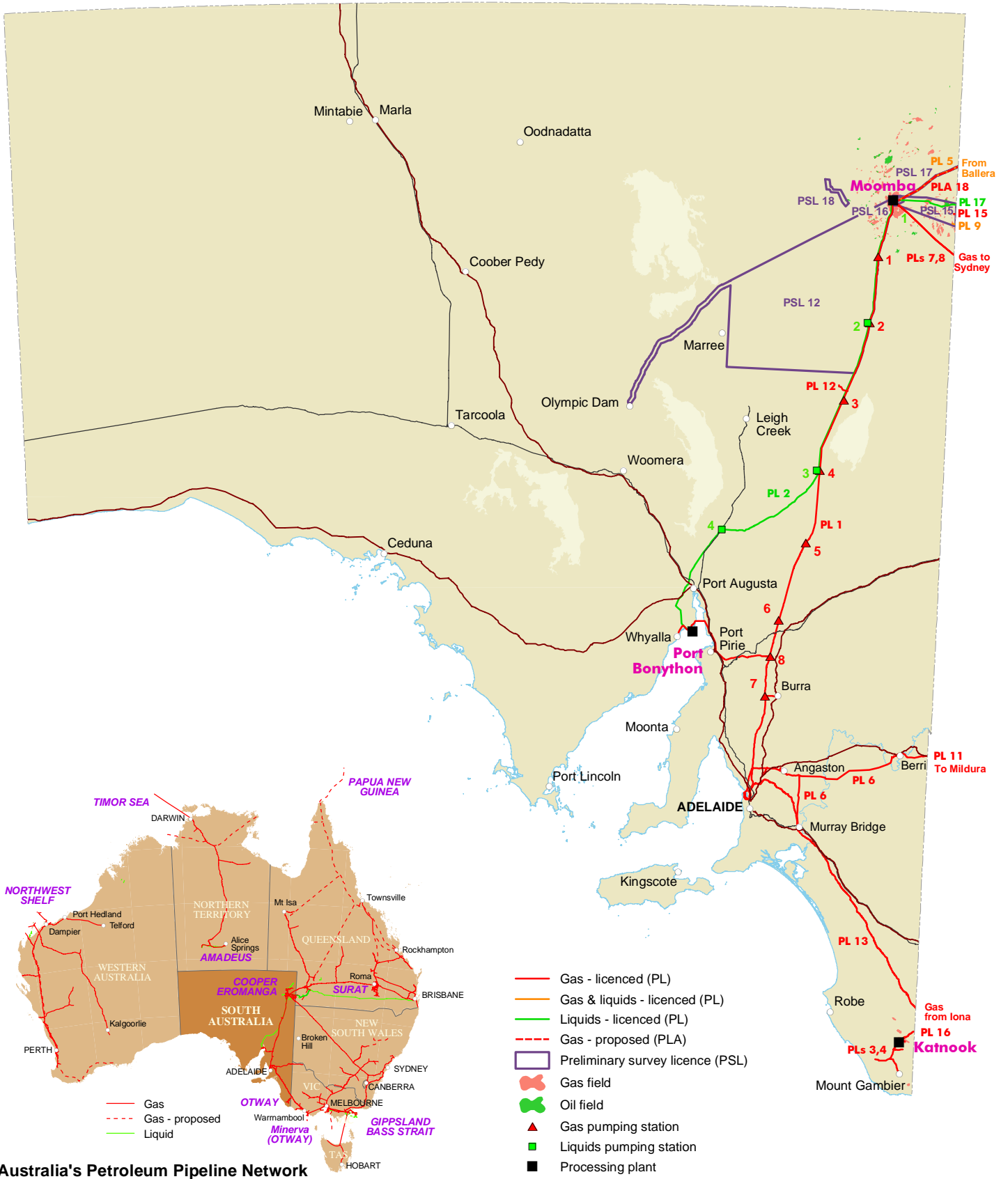
Licence number	Licence holder	Interest %	Locality	Expiry date	Area (km ²)
PSL 12	BHP Billiton Olympic Dam Corporation Pty Ltd	100.00	Olympic Dam to Moomba	14-Mar-2008	29,586
PSL 15	Santos Limited	100.00	Queensland to Moomba	25-Jun-2008	1,622
PSL 16	Epic Energy Queensland Pty Ltd	100.00	Moomba	23-Jul-2008	94
PSL 17	Epic Energy South Australia Pty Ltd	100.00	Queensland to Moomba	21-Aug-2008	93
PSL 18	Beach Petroleum Limited	75.00	Callawonga to Tantanna	26-Aug-2008	213
	Cooper Energy Limited	25.00			
Total area (km²)					31,607

** denotes low level official supervision operator

NOTE: Orange text entries throughout the document indicate changes since September 2007 edition of P1



GAS and LIQUIDS PIPELINES and PRELIMINARY SURVEY LICENCES - SA



0 100 200 Kilometres
Datum GDA 94 - Projection Equidistant Conic

Production details

Produced by: PIRSA Publishing Services

Plan number: 203542_006

Date produced: December 2007

Data source: databases maintained by PIRSA Spatial Information Services

Disclaimer

There is no warranty that this map is free from errors or omissions.
Issued under the authority of the Hon Paul Holloway MLC
Selected data on this map are available digitally and can be downloaded from www.pir.sa.gov.au

© Primary Industries and Resources SA 2007

Author / contact details

Alexander, E.
PIRSA Petroleum, 101 Grenfell Street,
Adelaide, South Australia 5000

internet: www.petroleum.pir.sa.gov.au
email: pirsa.petroleum@saugov.sa.gov.au
phone: (08) 8463 3000
fax: (08) 8463 3229

Company contacts

Company (with web link)	Address	Phone	Fax	Contact
AAA Energy Pty Ltd	284 Oxford Street LEEDERVILLE WA 6007	0417 950 286		Director - Mr Steve Falloon
Adelaide Energy Limited	Level 5, 70 Pirie Street ADELAIDE SA 5000	08 8228 5207	08 8223 3235	Managing Director - Mr Carl Dorsch
Agility Management Pty Ltd	Level 14, 1 O'Connell Street SYDNEY NSW 2000	02 9270 4704	02 9270 4701	MSPP Program Manager - Mr Mark Fothergill
Air Liquide Australia Ltd	380 St Kilda Road MELBOURNE VIC 3000	03 9697 9888	03 9690 7107	Primary Production Manager - Mr Mick Field
Mr Jim Allender	21 Salisbury Street UNLEY SA 5061	08 8272 1171		Mr Jim Allender
Alliance Petroleum Australia Pty Ltd	C/- Santos Ltd, Ground Floor, 60 Flinders Street ADELAIDE SA 5000	08 8116 5000	08 8116 5050	Executive VP Operations - Mr Jon Young
APT Pipelines (SA) Pty Limited	C/- APA Asset Management, 330 Grange Road KIDMAN PARK SA 5025	08 8159 1659	08 8353 6428	Liz Brierley
Australian-Canadian Oil Royalties Ltd	PO Box 1629 CISCO, TEXAS USA 76437	1 800 290 8342	1 254 442 3843	President - Mr Ely Sakhai or Mr Robert Kamon
Australian Pipeline Trust	Level 5, 241 O'Rierdan Street MASCOT NSW 2020	02 9693 0000	02 8339 0005	Engineering Manager - Mr Bob Allison
Australian Gasfields Ltd	C/- Energy World Corporation, Level 48, 264 - 278 George Street SYDNEY NSW 2000	02 9247 6888	02 9247 6100	Company Secretary - Mr Ian Jordan
Basin Oil Pty Ltd	C/- Santos Ltd, Ground Floor, 60 Flinders Street ADELAIDE SA 5000	08 8116 5000	08 8116 5050	Executive VP Operations - Mr Jon Young
Beach Petroleum Limited	Level 1, 25 Conyngham Street GLENSIDE SA 5065	08 8338 2833	08 8338 2336	Chief Executive Officer - Mr Reg Nelson
Beach Oil and Gas Pty Ltd	Level 1, 25 Conyngham Street GLENSIDE SA 5065	08 8338 2833	08 8338 2336	Chief Executive Officer - Mr Reg Nelson
BHP Billiton	GPO Box S1431 PERTH WA 6845	08 9338 4888	08 9278 4899	Manager Land Services - Mr Clive Atkinson
Bridge Oil Developments Pty Ltd	C/- Santos Ltd, Ground Floor, 60 Flinders Street ADELAIDE SA 5000	08 8116 5000	08 8116 5050	Executive VP Operations - Mr Jon Young
Callabonna Energy Pty Ltd	C/- PGN Geoscience Level 7, Suite 714 530 Little Collins Street MELBOURNE VIC 3000	02 9403 5033		Director - Mr Mike Raetz

Company contacts

Company (with web link)	Address	Phone	Fax	Contact
Centrex Resources NL	3 Keys Court HOVE SA 5048	08 8296 0707	08 8296 0266	Managing Director - Mr Graham Chrisp
Clean Energy Australasia Pty Ltd	Level 15, 10 Market Street BRISBANE QLD 4000	07 3379 7540	07 3379 7545	Director - Mr Joe Reichman
Cooper Energy Limited	Suite 4, Level 3, South Shore Centre, 83-85 The Esplanade SOUTH PERTH WA 6151	08 9368 5833	08 9368 5844	Chief Executive - Mr Michael Scott
Corporate Developments Pty Ltd	3 Keys Court HOVE SA 5048	08 8296 0707	08 8296 0266	Managing Director - Mr Graham Chrisp
Dawnpark Holdings Pty Ltd	8 Leverburgh Street ARDROSS WA 6153	08 9364 8224	08 9364 8224	Director - Mr Rudy Phoa
Deep Energy Ltd	C/- ELP & Muddy Boots Level 27, 288 Edward Street BRISBANE QLD 4000	07 3239 9700	07 3220 2135	Tenement Manager - Ms Kylie Gomez Gane
Delhi Petroleum Pty Ltd	c/- Beach Petroleum Limited 25 Conyngham Street GLENSIDE SA 5065	08 8338 2833	08 8338 2336	Chief Operating Officer - Mr Hector Gordon
DMS Partners, LP	Level 4, 111 Congress Avenue AUSTIN, TEXAS USA 78701	1 512 3913803	1 512 532 0595	Managing Partner - David M Schuette
Eagle Bay Resources NL	Suite 3, Level 1, 610 Murray Street WEST PERTH WA 6005	08 9481 3322	08 9481 3330	Director - Ms Linda Bell
Eden Energy Limited	Level 40, Exchange Plaza, 2 The Esplanade PERTH WA 6000	08 9282 5866	08 9282 5889	Chief Executive Officer - Mr Greg Solomon
Envestra Limited	Level 10, 81 Flinders Street ADELAIDE SA 5001	08 8227 1500	08 8227 1511	Manager Ops. & Technical regulation - Mr Ralph Mignone
Epic Energy South Australia Pty Ltd	26 High Street DRY CREEK SA 5094	08 8343 8100	08 8349 6493	Manager Operations - Mr Clive D'Cruz
Exoil Limited	Level 25, 500 Collins Street MELBOURNE VIC 3000	03 8610 4700	03 8610 4799	General Manager - Mr Mark Muzzin
Gascorp Australia Limited	Level 25, 500 Collins Street MELBOURNE VIC 3000	03 8610 4700	03 8610 4799	Director - Mr Geoffrey Albers
Geodynamics Ltd	Suite 6, Level 1, 19 Lang Parade MILTON QLD 4064	07 3721 7500	07 3721 7599	Managing Director - Mr Adrian Williams
Geothermal Resources Limited	63 Conyngham Street GLENSIDE SA 5065	08 8338 9292	08 8338 9293	Chairman - Dr Bob Johnson

Company contacts

Company (with web link)	Address	Phone	Fax	Contact
Gorodok Pty Ltd	C/- Level 40, Chiefly Tower, 2 Chiefly Square SYDNEY NSW 2000	02 8336 1352	02 8336 1385	Ethane Pipeline Manager - Mr Mark Walker
Gradient Energy Australia	27 Martha Street PADDINGTON QLD 4064	07 3369 0889	07 3036 6273	Director - Mr Stephen Nano
Merrill Gray	325 Esplanade East PORT MELBOURNE VIC 3207	03 9682 1437	03 9682 3993	Ms Merrill Gray
Granite Power Limited	Suite 602, Level 6, 333 George Street SYDNEY NSW 2000	02 8252 6100	02 8252 6199	Managing Director - Mr Stephen de Belle
Great Artesian Oil and Gas Limited	Level 2, Walker House, 161 Walker Street NORTH SYDNEY NSW 2060	02 9929 3383	02 9929 3883	Managing Director - Mr Andrew Carroll
Green Heat Resources Pty Ltd	Unit 6, 38 Colin Street WEST PERTH WA 6005	08 9482 0482	08 9482 0499	Managing Director - Mr Adrian Larking
Green Rock Geothermal Pty Ltd	Unit 6, 38 Colin Street WEST PERTH WA 6005	08 9482 0482	08 9482 0499	Managing Director - Mr Adrian Larking
Gujarat State Petroleum Corporation Ltd	GSPC, Bhavan, Sector-11, Gandhinagar-38201 GUJARAT, INDIA	91 79 6670 1001	91 79 2323 6375	Managing Director - Shri D. J. Pandian
Heathgate Resources Pty Ltd	Level 9, 45 Grenfell Street ADELAIDE SA 5000	08 8110 0500	08 8212 5559	General Manager - Mr Mark Chalmers
Holloman Oil and Gas Limited	Unit 8-9, 88 Forrest Street Cottesloe WA 6011	08 6461 6840	08 9286 2900	Managing Director - Mr John Risinger
Hughes & Hughes Australia Pty Ltd	36 Aldam Crescent SHELLEY WA 6148	0438 174 518	08 9259 6441	Mr Robert Arendts
Hybrid Energy SA Pty Ltd	Level 9, Wesfarmers House, 40 The Esplanade PERTH WA 6000	08 6484 0400	08 6464 0401	Managing Director - Mr Simon Ashton
Impress (Cooper Basin) Pty Ltd	Ground Floor, 83 Havelock Street WEST PERTH WA	08 9214 2500	08 9214 2511	Executive Chairman - Mr Douglas Jendry
Inferus Resources Pty Ltd	C/- Hetherington Exploration and Mining Title Services Pty Ltd 1st Floor, 503 Willoughby Road WILLOUGHBY NSW 2068	02 9967 4844	02 9967 4614	Mining Titles Consultant - Mr Mark Bolduan
Innaminka Petroleum Limited	924 Gympie Road CHERMSIDE QLD 4032	07 3359 8988	07 3359 8985	Managing Director - Mr Ross Wecker
Kerr-McGee NW Shelf Australia Pty Ltd	1201 Lake Robbins Drive The Woodlands, TEXAS USA 77380	1 832 636 1000		
Lakes Oil NL	Level 11, 500 Collins Street MELBOURNE VIC 3000	03 9629 1566	03 9629 1624	Executive Chairman - Mr Robert Annells

Company contacts

Company (with web link)	Address	Phone	Fax	Contact
Liberty Petroleum Corporation	10851 Black Canyon Hwy PHOENIX, ARIZONA USA	1 602 995 7194	1 602 864 6690	President - Mr Lane Franks
Magellan Petroleum (NT) Pty Ltd	Level 10, 145 Eagle Street BRISBANE QLD 4000	07 3832 6400	07 3832 6411	Managing Director - Dr Gwynn Davies
Meridian Resources Pty Ltd	c/- McDonald Steed McGrath, 262 Pirie Street ADELAIDE SA 5000	08 8223 5088	08 8223 5290	Partner - Mr Michael McDonald
Merlin Energy Pty Ltd	Suite 3, Level 4 Southshore Centre	08 9474 1444		Managing Director - Mr John Heugh
Mid Continent Equipment (Australia) Pty Ltd	130 Mills Street WELSHPOOL WA 6106		08 9451 8600	Director - Mr Ong Eng Kee
Mirboo Ridge Pty Ltd c/- Lakes Oil NL	Level 11, 500 Collins Street MELBOURNE VIC 3000	03 9629 1566	03 9629 1624	Chairman - Mr Robert Annells
MNGI Pty Ltd	105-106 Greenhill Road UNLEY SA 5061	08 8274 5000	08 8272 8141	Operations Manager - Mr Peter Reid
Moby Oil & Gas Limited	Level 25, 500 Collins Street MELBOURNE VIC 3000	03 9614 0426	03 9629 6278	Managing Director - Mr Geoffrey Albers
Murray Basin Petroleum Pty Ltd	Level 9, 175 Collins Street MELBOURNE VIC 3000	03 9639 1533	03 9310 7480	Company Secretary - Mr Jurgen Debrodt
National Energy Pty Ltd	Level 25, 500 Collins Street MELBOURNE VIC 3000	03 9629 6100	03 9629 6278	Managing Director - Mr Geoffrey Albers
Neo Oil Pty Ltd	PO Box 196 ALDGATE SA 5154	08 8370 8779	08 8370 8758	Principal - Mr Graeme Haines
New World Energy Solutions	7 Beverley Tce SOUTH GUILDFORD WA 6055	0419 130 366	08 9477 4388	Managing Director - Mr John Libby
Officer Basin Energy Pty Ltd	Level 1, 262-266 Pirie St ADELAIDE SA 5000	08 8223 5061	08 8223 5097	Mr Rob McDonald
Oilex NL	PO Box 588 WEST PERTH WA 6872	08 9226 5577	08 9226 2108	Exploration Manager - Mr Paul Senycia
Osiris Energy Pty Ltd	PO Box 871 SOUTH YARRA VIC 3141	03 9826 1571	03 9826 1571	Director - Mr Ron Palmer
Origin Energy CSG Limited	Level 2, 339 Coronation Drive MILTON QLD 4064	07 3858 0600	07 3369 7840	Joint Venture Manager - Mr Ian Mortimore
Origin Energy Resources Ltd	Level 2, 339 Coronation Drive MILTON QLD 4064	07 3858 0623	07 3858 0248	Manager Exploration & Production - Mr Ross Evans

Company contacts

Company (with web link)	Address	Phone	Fax	Contact
Origin Energy Asset Management Ltd	GPO Box 133 HINDMARSH SA 5007	08 8340 9167	08 8340 4609	Manager National Pipelines - Ms Liz Brierley Manager Tech. Regulation/Compliance - Mr John Kouzaba
Pacific Hydro Limited	Level 11, 474 Flinders Street MELBOURNE VIC 3000	03 9615 6410	03 9620 4433	Development Manager - Mr Terry Teoh
PEL 73 Investments Partners, LP	1210 San Antonio, Ste. 700 AUSTIN, TEXAS 78701	1 512 479 9955	1 512 479 9958	Manager - Mr Doug Launius
Permian Oil Pty Ltd	C/- Roma Petroleum NL Level 5, 400 Queen Street	07 3221 1322	07 3221 4206	Executive Chairman - Mr Bill Siller
Planet Gas Limited	Level 8, 261 George Street SYDNEY NSW 2000	02 9247 5112	02 9247 7273	Chief Executive Officer - Mr Norman A. Seckold
Rawson Resources Limited	31 Centennial Road BOWRAL NSW 2576	02 4862 3311	02 4862 3355	Executive Chairman - Dr John Conolly
Reef Oil Pty Ltd	C/- Santos Ltd, Ground Floor, 60 Flinders Street ADELAIDE SA 5000	08 8116 5000	08 8116 5050	Executive VP Operations - Mr Jon Young
Red Sky Energy Limited	Level 1, 89 High Street KEW VIC 3000	03 9854 6144		Managing Director - Mr Bryan Quinn
Sagasco Southeast Inc.	C/- Origin Energy, Level 2, 339 Coronation Drive MILTON QLD 4064	07 3858 0623	07 3858 0248	Manager Exploration & Production - Mr David Woodley
Mr Ely Sakhai	C/- ACOR Ltd, PO Box 1629 CISCO, TEXAS USA 76437	1 800 290 8342	1 254 442 3843	Mr Ely Sakhai
Santos Ltd	Ground Floor, 60 Flinders Street ADELAIDE SA 5000	08 8116 5000	08 8116 5050	Executive VP Operations - Mr Jon Young
Santos Ltd	Ground Floor, 60 Flinders Street ADELAIDE SA 5000	08 8116 5000	08 8116 5050	Production & Engineering Manager - Mr Roger Kennett
Santos (BOL) Pty Ltd	C/- Santos Ltd, Ground Floor, 60 Flinders Street ADELAIDE SA 5000	08 8116 5000	08 8116 5050	Executive VP Operations - Mr Jon Young
Santos (NARNL Cooper) Pty Ltd	C/- Santos Ltd, Ground Floor, 60 Flinders Street ADELAIDE SA 5000	08 8116 5000	08 8116 5050	Executive VP Operations - Mr Jon Young
Santos Petroleum Pty Ltd	C/- Santos Ltd, Ground Floor, 60 Flinders Street ADELAIDE SA 5000	08 8116 5000	08 8116 5050	Executive VP Operations - Mr Jon Young
SAPEX Limited	2 Grenfell Street KENT TOWN SA 5067	08 8363 3311	08 8363 3399	Managing Director - Mr Andrew Andrejewskis
David M Schuette (DMS Exploration Inc)	Level 4, 111 Congress Avenue AUSTIN, TEXAS USA 78701	1 512 3913803	1 512 370 3101	Managing Director - David M Schuette

Company contacts

Company (with web link)	Address	Phone	Fax	Contact
Scopenergy Limited	Level 9, 1 York Street SYDNEY NSW 2000	02 9250 0121	02 9250 0122	Director - Mr Roger Massy-Greene
South East Australia Gas Pty Ltd	Level 4, 70 Hindmarsh Square ADELAIDE SA 5000	08 8236 6800	08 8236 6899	General Manager - Mr Ashley Kellett
Springfield Oil & Gas Pty Ltd	Ground Floor, 83 Havelock Street WEST PERTH WA 6005	08 9214 2500	08 9214 2511	Executive Chairman - Mr Douglas Jendry
Standard Oil Pty Ltd	61A Rosewood Ave WOODLANDS WA 6108	08 9244 7540	08 9244 7537	Director - Mr Ryanto Husodo
Strike Oil Limited	Level 9, Wesfarmers House, 40 The Esplanade PERTH WA 6000	08 6464 0400	08 6464 0401	Executive Director - Mr Simon Ashton
Stuart Petroleum Limited	Level 7, 22 King William Street ADELAIDE SA 5000	08 8410 0611	08 8410 0250	Chief Executive Officer - Mr Tino Guglielmo
Sundance Energy Australia Limited	80 Marion Street UNLEY SA 5061	08 8271 0915	08 8271 0975	Chairman - Mr Charles Binks
Teck Cominco Australia Pty Ltd	Level 2, Ventnor Avenue WEST PERTH WA 6005	08 9321 4936	08 9321 4766	Exploration Manager - Mr Ian Sandl
Torrens Energy Limited	Level 1, 25 Unley Road PARKSIDE SA 5063	08 8373 1822	08 8373 1733	Chief Executive Officer - Mr Chris Matthews
Traditional Oil Exploration Proprietary Limited	C/- Enterprise Energy NL, Level 11, 50 Pirie Street ADELAIDE SA 5000	08 8231 4944	08 8231 7233	Managing Director - Mr Warren Leslie
Tri-C Resources, Inc.	909 Wirts Road HOUSTON, TEXAS USA 77024	1 713 685 3600	1 713 685 3630	President - Mr M Scott-Cone
Tri-Star Energy Company	Level 35, 123 Eagle Street BRISBANE QLD 4000	07 3236 9800	07 3221 2146	Land Manager - Mr Victor Suchocki
United Oil & Gas Pty Ltd	Level 25, 500 Collins Street MELBOURNE VIC 3000	03 9629 6100	03 9629 6278	Managing Director - Mr Geoffrey Albers
Vamgas Pty Ltd	C/- Santos Ltd, 91 King William Street ADELAIDE SA 5000	08 8224 7200	08 8224 7636	Executive VP Operations - Mr Jon Young
Vernon E Faulconer Australia Inc	1001 ESE Loop 323, 160 Woodgate Centre TYLER, TEXAS USA 75711	1 903 581 4382	1 903 581 5072	Chief Executive Officer - Mr Vernon E. Faulconer
Victoria Oil Exploration (1977) Pty Ltd	Level 36, 2 The Esplanade PERTH WA 6000	08 9220 9800	08 9220 9801	Managing Director - Mr John Kopcheff
Videocon Industries Limited	14 Kms Stone, Aurangabad - Paithan Road, Chitegaon Village, Tq. Paithan, Dist. Aurangabad	91 2431 251501	91 011 2361 9785	Managing Director - Mr Vengopal N Dhoot

Company contacts

Company (with web link)	Address	Phone	Fax	Contact
Woodside Energy Ltd	1 Adelaide Terrace PERTH WA 6000	08 9348 5019	08 9348 6494	Exploration Team Leader, SE Australia - Mr Steve Rigby

Licence operator contact details are provided on the following page

Operator contacts

Company (Operator) (with weblink)	Licences	Address	Phone	Fax	Contact	Email
Petroleum and geothermal exploration licences (onshore)						
Adelaide Energy Limited	PEL 218 (Cooper) PEL 255 (Otway)	Level 5, 70 Pirie Street ADELAIDE SA 5000	61 8 8228 5207	61 8 8223 3235	Managing Director - Mr Carl Dorsch	info@adelaideenergy.com.au
Beach Petroleum Limited	PEL 91, 92, 94, 95, 107 & 110 (Cooper), PPL 220	Level 1, 25 Conyngham St GLENSIDE SA 5065	61 8 8338 2833	61 8 8338 2336	Chief Executive Officer - Mr Reg Nelson	reg.nelson@beachpetroleum.com.au
			61 8 8338 2833	61 8 8338 2336	Executive Director - Mr Hector Gordon	hector.gordon@beachpetroleum.com.au
Clean Energy Australasia Pty Ltd	GEL 267, 268, 269, 270, 271, 272, 273, 274, 275, 276 & 277	Clean Energy Australasia Pty Ltd GPO Box 534 SHERWOOD QLD 4075	61 7 3379 7540	61 7 3379 7545	Director - Mr Joe Reichman	joe.reichman@bigpond.com
Cooper Energy Limited	PEL 88 (Cooper), PPL 220	Suite 4, Level 3, 83-85 The Esplanade SOUTH PERTH WA 6151	61 8 9368 5833	61 8 9368 5844	Chief Executive - Mr Michael Scott	mikes@cooperenergy.com.au
(DMS Exploration Inc)	PEL 73 (Stansbury)	8 Cumberland Avenue ALDGATE SA 5154	61 8 8339 3804		Mr Griff Weste	geoweste@ozemail.com.au
Eagle Bay Resources NL	PEL 182 (Cooper)	Suite 3, Level 1, 610 Murray Street WEST PERTH WA 6005	61 8 9481 3322	61 8 9481 3330	Director - Ms Linda Bell	ebr@indigo.net.au
Eden Energy Pty Ltd	GEL 166, 167, 168, 169, 175, 176, 177, 185	Level 40, Exchange Plaza, 2 The Esplanade PERTH WA 6000	61 8 9221 5323	61 8 9221 5955	Chief Executive Officer - Mr Greg Solomon	mailroom@tasmanresources.com.au
Geodynamics Ltd	GEL 99, GRL 3, 4, 5, 6, 7, 8, 9, 10, 11, 12	Suite 6, Level 1, 19 Lang Pde MILTON QLD 4064	61 7 3721 7500	61 73721 7599	Managing Director - Mr Adrian Williams	info@geodynamics.com.au
Geothermal Resources Limited	GEL 181,208-210, 214-217, 222 & 249- 250; GEL 279, 280	63 Conyngham St GLENSIDE SA 5065	61 8 8338 9292	61 8 8338 9293	Chairman - Dr Bob Johnson	info@geothermal-resources.com.au
Granite Power Limited	GEL 207	Suite 602, Level 6 333 George Street SYDNEY NSW 2000	61 2 8252 6100	61 2 8252 6199	Managing Director - Stephen de Belle	info@granitepwr.com
Great Artesian Oil and Gas Limited	PEL 106 (Cooper)	Level 2, Walker House, 161 Walker St NORTH SYDNEY NSW 2060	61 2 9929 3383	61 2 9929 3883	Managing Director - Mr Andy Carroll	andy.carroll@greatoil.com.au
Green Heat Resources Pty Ltd	GEL 128, 129, 161, 162, 163, 206, 282, 283, 284	Unit 6, 38 Colin St WEST PERTH WA 6005	61 8 9482 0482	61 8 9482 0499	Managing Director - Mr Adrian Larking	info@greenrock.com.au

Operator contacts

Company (Operator) (with weblink)	Licences	Address	Phone	Fax	Contact	Email
Petroleum and geothermal exploration licences (onshore)						
Green Rock Energy Limited	GEL 213, 244, 245, 246, 247 & 248	Unit 6, 38 Colin St WEST PERTH WA 6005	61 8 9482 0482	61 8 9482 0499	Managing Director - Mr Adrian Larking	info@greenrock.com.au
Holloman Oil and Gas Limited	PELs 108, 109, 112 (Cooper)	PO Box 968 COTTESLOE WA 6911	61 8 6461 6840	61 8 9286 2900	Managing Director - Mr John Risinger	jrisinger@holloman.com.au
Hughes & Hughes Australia Pty Ltd	PEL 105 (Cooper)	36 Aldam Cr SHELLEY WA 6148	0438 174 518	08 9259 6441	Mr Robert Arendts	shrob@ozemail.com.au
Hybrid Energy SA Pty Ltd	PEL 127 (Otway)	Level 9, 40 The Esplanade PERTH WA 6000	61 8 6484 0400	61 8 6464 0401	Managing Director - Mr Simon Ashton	strike@strikeoil.com.au
Innamincka Petroleum Limited	PEL 101 & 103 PRL 14 (Cooper)	924 Gympie Rd CHERMSIDE QLD 4032	61 7 3359 8988	61 7 3359 8985	Managing Director - Mr Ross Wecker	ross.wecker@innapet.com.au
Lakes Oil NL	PEL 57, 66 (Otway)	Level 11, 500 Collins St MELBOURNE VIC 3000	61 3 9629 1566	61 3 9629 1624	Executive Chairman - Mr Robert Annells	lakes@lakesoil.com.au
Meridian Resources Pty Ltd	PEL 82 (Otway) PEL 132 (Arrowie)	c/- McDonald Steed McGrath Lawyers 262-266 Pirie St ADELAIDE SA 5000	61 8 8223 5088	61 8 8223 5290	Partner - Mr Michael McDonald	mail@mcdonaldsteed.com.au
MNGI Pty Ltd	GEL 156-158, 178- 180, 241, 242, 254 & 336	105-106 Greenhill Road UNLEY SA 5061	61 8 8274 5000	61 8 8272 8141	Operations Manager - Mr Peter Reid	admin@minotaurexploration.com.au
Neo Oil Pty Ltd	PEL 186, 187 (Otway)	PO Box 196 ALDGATE SA 5154	61 8 8370 8779	61 8 8370 8758	Principal - Mr Graeme Haines	graeme@hainessurveys.com.au
Officer Basin Energy Pty Ltd	PEL 81, PEL 253	#2500 520 5th Avenue S.W. CALGARY AB CANADA T2T-3R7 Level 1, 262-266 Pirie Street ADELAIDE SA 5000	1 403 619 6790 61 8 8272 1171	1 403 246 7935	Executive Vice President - Mr Matthew Philipchuck VP Exploration - Mr Jim Allender	matthew@officerbasinenergy.com jim@officerbasinenergy.com
Origin Energy Resources Ltd	PRL 1, 2 (Otway)	Level 2, South Tower, 33 Coronation Dr MILTON QLD 4001	61 7 3858 0623	61 73858 0640	Manager Exploration & Production - Mr Ross Evans	ross.evans@upstream.originenergy.com.au
Osiris Energy Pty Ltd	GEL 220, 221, 223 & 281	PO Box 871 SOUTH YARRA VIC 3141	61 3 9826 1571	61 3 9826 1571	Director - Mr Ron Palmer	ron.palmer@osirisenergy.com.au

Operator contacts

Company (Operator) (with weblink)	Licences	Address	Phone	Fax	Contact	Email
Petroleum and geothermal exploration licences (onshore)						
Pacific Hydro Limited	GEL 191-205 & 236-238	Level 11, 474 Flinders Street MELBOURNE VIC 3000	61 3 9615 6410	61 3 9620 4433	Development Manager - Mr Terry Teoh	tteoh@pacifichydro.com.au
Rawson Resources Limited	PEL 154, 155 (Otway)	31 Centennial Rd BOWRAL NSW 2576	61 2 4862 3311	61 2 4862 3355	Executive Chairman - Dr John Connolly	jconolly@rawsonresources.com
Santos Ltd	PEL 114 (Cooper)	Ground Floor, 60 Flinders Street ADELAIDE SA 5000	61 8 8116 5000	61 8 8116 5050	Exploration Manager - Mr Stuart Jones	stuart.jones@santos.com
			61 8 8116 5000	61 8 8116 5050	Executive VP Operations - Mr Jon Young	jon.young@santos.com
SAPEX Limited	PELs 117 - 124	2 Grenfell Street KENT TOWN SA 5067	61 8 8363 3311	61 8363 3399	Managing Director - Mr Andrew Andrejewskis	aja@sapex.com.au
Scopenergy Limited	GEL 170, 171, 172, 173, 184, 212	Level 9, 1 York St SYDNEY NSW 2000	61 2 9250 0121	61 2 9250 0122	Director - Mr Roger Massy-Greene	Cate.Blatch@scopenergy.com.au
			61 2 9385 5192	61 2 9385 5182	Technical Director - Assoc. Prof. Sheik Rahman	sheik.rahman@unsw.edu.au
Standard Oil Pty Ltd	PEL 139	61A Rosewood Ave WOODLANDS WA 6018	61 8 9244 7540	61 8 9244 7537	Director - Mr Okie Lukita	dawnpark@mail.com
Stuart Petroleum Limited	PEL 90, 93, 100, 102, 113 (Cooper)	Level 7, 22 King William St ADELAIDE SA 5000	61 8 8410 0611	61 8 8410 0250	Chief Executive Officer - Mr Tino Guglielmo	tino.guglielmo@stuartpetroleum.com.au
			61 8 8410 0611	61 8 8410 0250	Exploration Manager - Mr Bob Frears	rfrears@stuartpetroleum.com.au
Torrens Energy Limited	GEL 226-235, 260- 263, 278 & 285	Level 1, 25 Unley Road PARKSIDE SA 5063	61 8 8373 1822	61 8 8373 1733	Chief Executive Officer - Mr Chris Matthews	chris.matthews@torrensenergy.com
Tri-Star Energy Company	GELs 264-265	Level 35, 123 Eagle Street BRISBANE QLD 4000	61 7 3236 9800	61 7 3221 2146	Land Manager - Mr Victor Suchocki	brisbane@tri-starpetroleum.com
Victoria Oil Exploration (1977) Pty Ltd	PEL 86, 87, 89, 104, 111, 115 (Cooper)	Level 36, 2 The Esplanade PERTH WA 6000	61 8 9220 9800	61 8 9220 9801	Managing Director - Mr John Kopcheff	john@elstree.com.au
			61 8 9220 9800	61 8 9220 9801	Exploration Manager - Mr Chas Lane	chas@elstree.com.au

Operator contacts

Company (Operator) <small>(with weblink)</small>	Licences	Address	Phone	Fax	Contact	Email
Dana Petroleum (E&P) Limited	EPP 28, 29, 30, 31 (Bight and Duntroon)	17 Carden Pl Aberdeen AB10 1UR SCOTLAND UK	44 1224 652400	44 1224 652401	Technical Director - A M Bostock	
Exoil Limited	EPP 35, EPP 36 (Otway)	Level 21, 500 Collins Street MELBOURNE VIC 3000	61 3 8610 4700	61 3 8610 4799	Managing Director - Mr James Willis	james.willis@albersgroup.com
Great Artesian Oil and Gas Limited	EPP 27 (Otway)	Level 2, Walker House 161 Walker St NORTH SYDNEY NSW 2060	61 2 9929 3383	61 2 9929 3883	Managing Director - Dr Ray Shaw	rayshaw@greatoil.com.au
Kerr-McGee NW Shelf Australia Pty Ltd	EPP 33 (Otway)	1201 Lake Robbins Drive The Woodlands, TEXAS USA 77380	1 832 636 1000			
Oilex NL	EPP 27 (Otway)	PO Box 588 WEST PERTH WA 6872	61 8 9226 5577	61 8 9226 2108	Exploration Manager - Mr Paul Senycia Mr Ray Barnes	oilex@oilex.com.au
United Oil & Gas Pty Ltd	EPP 34 (Otway)	Level 21, 500 Collins St MELBOURNE VIC 3000	61 3 9629 6100	61 3 9629 6278	Managing Director - Mr James Willis	james.willis@albersgroup.com
Woodside Energy Ltd	EPP 31 (Duntroon)	1 Adelaide Tce PERTH WA 6000	61 8 9348 5411	61 8 9348 6494	Team Leader, SE Australia - Mr Steve Rigby	stephen.rigby@woodside.com.au
