

Approved form of digital data submissions (excluding geophysical data) under Regulation 50

(NOTE: These requirements are provisional and subject to change. They include geophysical reports but do not include geophysical data submission, which are the subject of a separate document)

General requirements

1. Media

Only the following media will be accepted

- 1.44 mb floppy disk
- CD – ROM/DVD-rom
- 8mm exabyte tape
- 4mm DAT tape
- EMAIL (for files less than 3Mb)

Note: The media used should be appropriate to the volume of data being submitted.

2. Operating System

- Reports/files and/or data (eg WORD, EXCEL files) must be formatted for IBM windows operating system, however all tape data (eg TAR files) must be formatted in SUN Microsystems UNIX operating system.

3. File Compression

Files may be submitted in compressed form, however:

- they must be self extracting or instructions for decompression must be included
- if software other than WINZIP (or TAR for exabyte/DAT tapes) is used the relevant decompression software must be included
- files must be accompanied a full verification file listing, detailing the contents of the compressed file

4. Security

Submitted digital files (PDF's, MS Office, data etc) must not be password protected

5. Activity Progress reports

Activity progress reports (eg Geophysical Progress Reports, Daily Drilling Reports) are preferred to be submitted via EMAIL, to the following addresses:

- *Daily Drilling Reports* should be emailed to <mailto:pirs.petrolops@saugov.sa.gov.au>
- *Geophysical Progress Reports* should be emailed to cockshell.david@saugov.sa.gov.au
- PDF Format is preferred, however WORD files maybe accepted.

6. Reports

6.1 Introduction

This section describes the requirements for the submission of text based reports of any kind (eg seismic, well completion reports, environmental impact reports, annual reports etc).

When compiling digital reports please ensure:

- The integrity of the original hardcopy report & associated data is maintained
- The ordering of report components is clear
- All data are included

The reports should retain the well established structure & sequence of the hardcopy (paper) report including title page, list of contents, main body of text, attachments (plans, figure etc) and appendices (additional reports, tabular data etc.) Follow the example bookmarking, external plans etc.

A hardcopy (verification) report should accompany the digitally submitted report, which has been generated from the submitted digital document.

If the operator has been given low official supervision status for the applicable activity, the hardcopy need not be submitted.

6.2 Text

The preferred format for text in the body of the report and any separate reports that are included as appendices is Adobe Acrobat PDF format.. In most cases licensees will need to convert the text from the native format (WORD, EXCEL etc) to PDF format. This may be achieved by purchasing Adobe acrobat software or utilising a third party to undertake the conversion.

When using PDF, the report text (including tables of contents, abstract, etc) and any figures, tables, graphs, small plans etc that form part of the report and meet our size limitations can be embedded into the PDF. This report should be bookmarked to reflect the contents page/pages, and to assist navigation through the document. Table data and photographs should be included in the PDF of the document, but also supplied in the other formats listed below.

If the licensee cannot access Adobe Acrobat software, the text may (with Petroleum Group permission) be submitted in WORD format, or in the case of contractors reports which were not submitted to the operator in digital format, in scanned PDF format

6.3 Plans, figures, plates, images etc

Most of the small to medium (up to A3, 420 x 297mm) figures and plans will be embedded into the PDF.

For larger plans, greater than A3, embedding into the report PDF is not considered appropriate, and must be submitted as high quality image files. These plans, images etc are preferably to be left in their native form as either as TIFF Group 4 (B/W) JPEG (colour and greyscale) or original CGM +, or SLB's, PDS format, Baker Atlas, Meta format. High quality PDF's may be submitted if these native formats are not available, but file size should be less than 25Mb in this case. The plans are to be linked to the report via bookmarking and are to occupy the same directory as the PDF.

Where possible general plans (excluding logs) should not exceed A0 size (1189 x 841 mm).

Minimum resolution for plan Tiffs, JPEG's and CGM's is 200 dpi.

Composite Logs, mudlogs and wireline log plots should not be paginated, but be submitted as a continuous plot.

6.4 File Name Conventions

Filenames for well completion reports should conform to the following:
WELLNAMEwellnumber_report.PDF

ie. Albert 1 Well Completion Report will have a directory name of Albert_1 containing the following files:

- Albert1_report.pdf
- Albert1_compositelog.tif or .jpg or .cgm or .pds
- Albert1_mudlog.tif or .jpg or .cgm or .pds
- Other filenames should be logical, such as figure1.tif, appendix1_figure1.jpg etc.

6.5 Photographs

All photographs including core photographs, environmental photographs etc., are to be submitted as quality JPEG files with a minimum resolution of 300 dpi and 64k colours (as a minimum).

6.6 Tabular Data

All tabular data are to be supplied as delimited ASCII (space delimited preferred). Files should include column headings, units and explanations of any abbreviations.

7. Wireline Logs

NOTE: Any logging runs which do not acquire any new technical information about the formation or casing eg DST correlation logs, sidewall core sampling record, perforation tools, junk basket, tubing/casing cutters punchers, packer setting, CCLs, etc) need not be submitted in any form. However routine processed data (eg dipmeter/FMS) must also be submitted as prints/plots and digital data.

7.1 Plot files

- Plot files of hardcopy well log prints acquired must be submitted in addition to the hardcopy prints (this substitutes for sepias previously required to be submitted).
- Plot files and prints must be at the largest scale available (ie at 1:200 not 1:500. Colour hardcopy need not be submitted, but plot files must be in colour if the original service company plot is in colour
- If available, plot files must be supplied in PDS/META or CGM format. Other standard image formats (eg TIFF, JPEG etc) may be substituted with the agreement of PIRSA.
- Plot files must be a true representation of the submitted hardcopy prints and the digital data.
- Plot files must not be paginated (ie multiple files), but supplied as a single continuous file

NOTE: Plots/ hardcopy prints are used by PIRSA to verify the digital data. Any inconsistency between the digital data and the prints will result in a request for both to be resubmitted, and compliance with Regulation 39 will not be recorded until complete and consistent data are submitted to PIRSA.

7.2 Digital data

- Data to be submitted must be supplied in the format as originally recorded, and be direct copy of the data supplied by the contracting company to the licensee.
- Data which have been exported from other software packages will not be accepted.
- The digital data must contain all the curves recorded in the plot files/prints, and be consistent in depth with the plot files/prints.
- If any errors are detected (or any other revisions to the data are made) at any time subsequent to submission of the original data to PIRSA, then the revised digital data and plotfiles/prints must be submitted to PIRSA.
- If digital data are resubmitted, the submission must be accompanied by a hardcopy summary of how the new data differs from that previously submitted, and the reasons for the error/revision.

8. Daily Drilling reports

PIRSA requires the following data (in addition to that specified in Regulation 38) for wells that are currently drilling.

- Leak Off Tests
- Cement calculations

PIRSA does not require the following data.

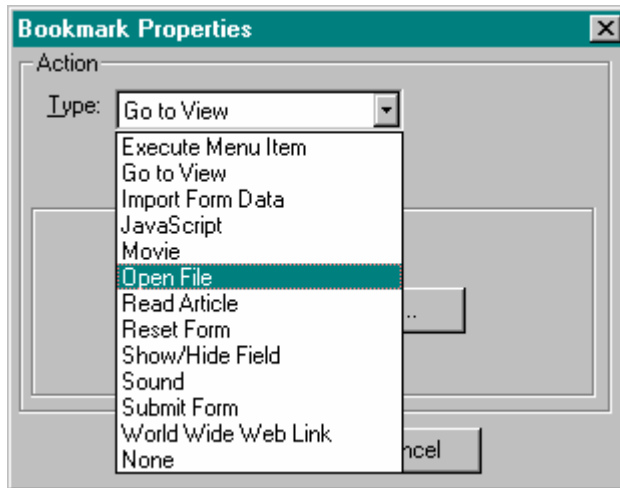
- Tubing tally reports
- Casing tally reports
- Raw data files (DST's) – to be provided with Well Completion Report
- BOP Tests
- Tour Reports

Note: Daily workover reports are not required.

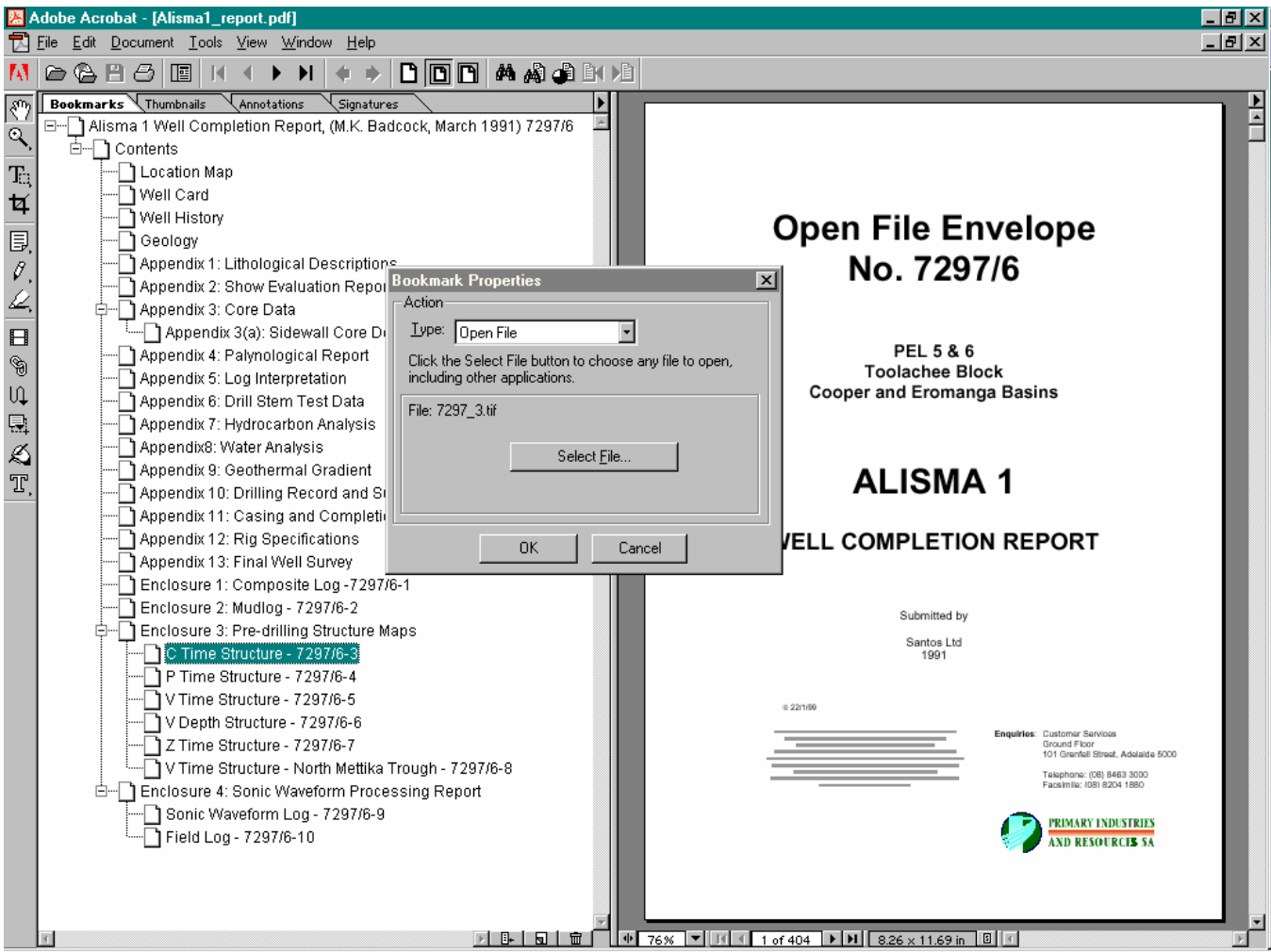
Data Required	Data Type Required	Remarks
Reports		
Report text (including plans <A3, Tables and photographs)	PDF	PDF must be bookmarked. WORD format may be acceptable with agreement of PIRSA. Reports not in original digital format must be scanned and submitted in PDF format
Colour plans, maps, logs etc <A3	TIFF in addition to PDF supplied above	Minimum 200dpi resolution
plans, maps, composite logs etc >A3	CGM, TIFF, JPEG or PDF	Minimum 200dpi resolution. PDFs Must not exceed 25 Mb in size
Digital petrophysical, geochemical or other analyses	ASCII, MS Excel (in addition to PDF supplied above)	As a space ASCII file with column headings, units and explanations of any abbreviations
Photographs	JPEG (in addition to PDF supplied above)	Minimum resolution 300dpi and 64K colours
Field and processed data		
Edited field and processed data for all wireline logs	Digital (DLIS,)	Format supplied same as originally recorded with verification listing of the data supplied. The data shall include full header information.
Edited field and processed data for all MWD or LWD tools	DLIS	Format supplied same as originally recorded with verification listing of the data supplied. The data shall include full header information.
Plot files for log prints	PDS, META, CGM	TIFF, JPEG may be substituted with agreement of PIRSA
Mudlogging data	ASCII	With a header giving field names and units of measure
Borehole deviation survey	LIS, DLIS, LAS, MS Excel	Azimuth reference must state whether its (True, magnetic or grid north)

CREATE BOOKMARK LINK TO OTHER APPLICATION (Large Plans)

Highlight bookmark, right click on mouse, select properties.
In 'Type' select open file.



Select 'Select file', select file to open, click open, click OK



Updated 19th August 2004