



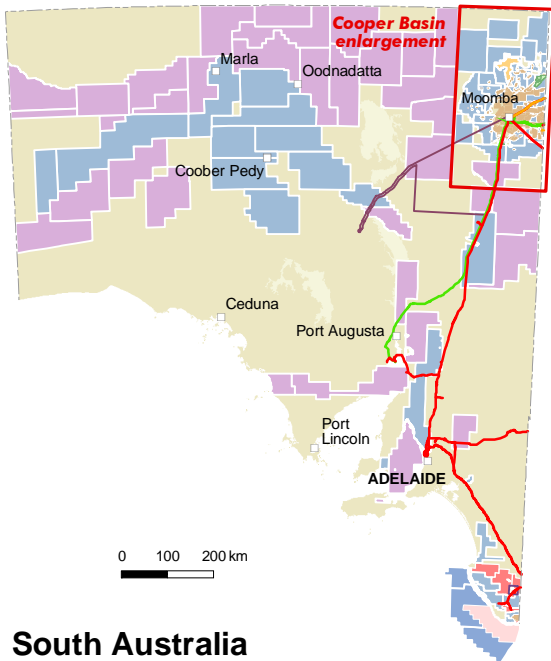
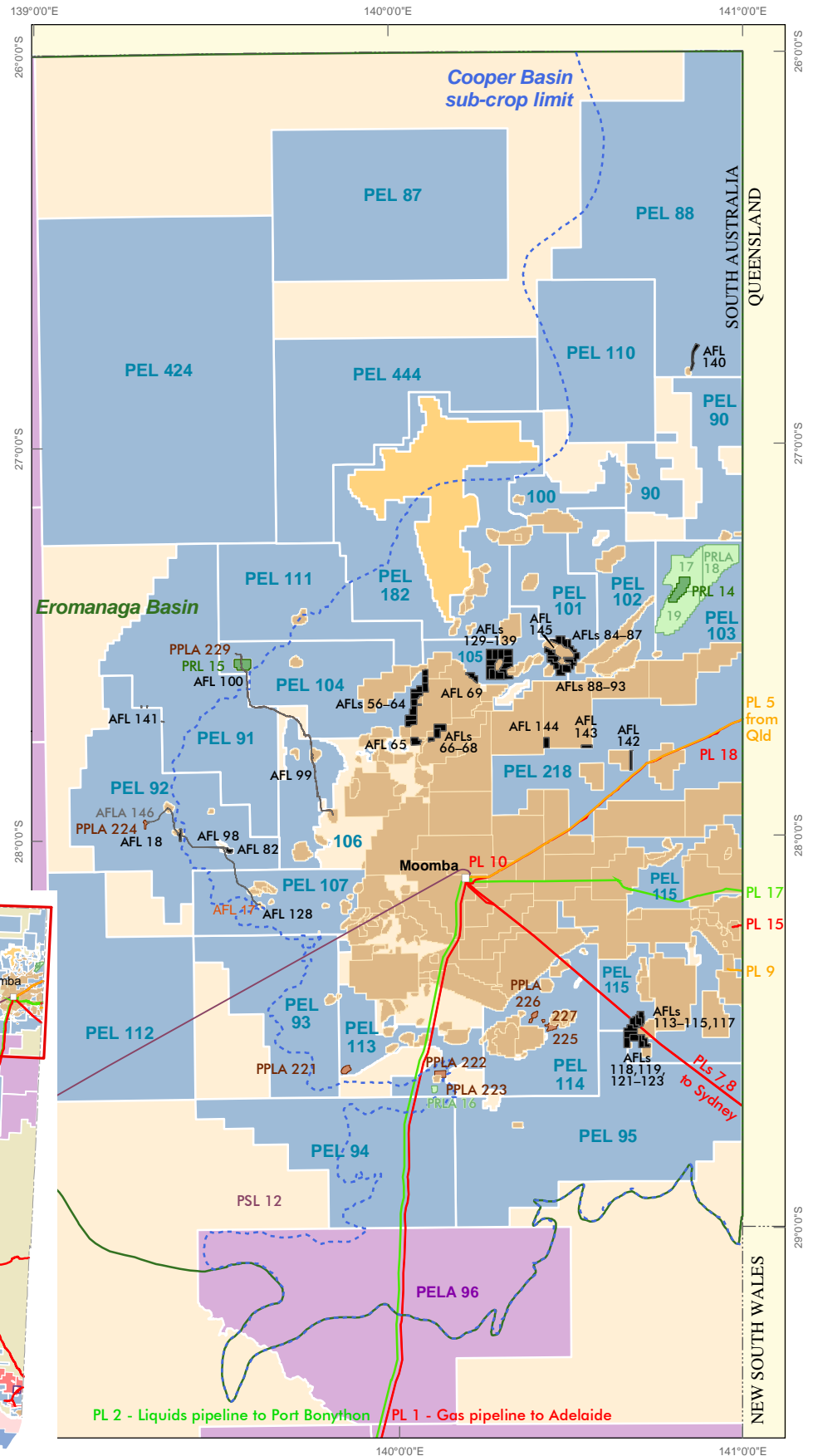
Cooper and Eromanga Basins, South Australia PETROLEUM TENEMENTS

Petroleum tenements

- Onshore: exploration licence (PEL)
- Offshore: exploration permit for petroleum (EPP)
- Exploration licence application (PELA)
- Production licence (PPL)
- Production licence application (PPLA)
- Retention licence (PRL)
- Retention licence application (PRLA)
- Preliminary survey licence (PSL)
- Preliminary survey licence application (PSLA)
- Associated facility licence (AFL)
- Associated facility licence application (AFLA)
- Surrendered associated facility licence (AFL)

Infrastructure

- Pipeline licence (PL) – gas
- Pipeline licence (PL) – gas and liquids
- Pipeline licence (PL) – liquids
- Coongie Lakes control zone – no petroleum access



South Australia

Production details

Produced by: PIRSA Publishing Services

Plan number: 203542_003

Date produced: September 2008

Data source: databases maintained by PIRSA Spatial Information Services

Disclaimer

There is no warranty that this map is free from errors or omissions.
Issued under the authority of the Hon Paul Holloway MLC
Selected data on this map are available digitally and can be downloaded from www.pir.sa.gov.au

© Primary Industries and Resources SA 2008

0 20 40 60 Kilometres
Datum GDA 94 - Projection MGA Zone 54

Author / contact details

Alexander, E.
PIRSA Petroleum, 101 Grenfell Street,
Adelaide, South Australia 5000
internet: www.petroleum.pir.sa.gov.au
email: pirsa.petroleum@saugov.sa.gov.au
phone: (08) 8463 3000
fax: (08) 8463 3229